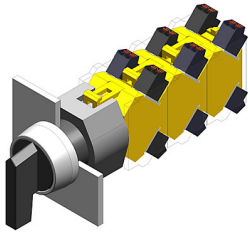


EAO – Your Expert Partner for Human Machine Interfaces

704.101.0 - Selector switch actuator 2 positions, long lever

704.101.0 - Selector switch actuator 2 positions, long lever



Attention: The preview is based on a sample product. This can differ from your current configuration.

Mounting

Mounting cut-out	Ø 22,3 mm
Design	raised

Front

Front dimension	Ø 29 mm
Front shape	round
Front bezel colour	natural anodized
Front bezel material	Aluminium

Other Attributes

Weight	0,037 kg
--------	----------

Operating-/Indication part

Lever material	Plastic
Lever colour	black
Switching angle	
Lever illumination	non-illuminative
Lever shape	long

IP-Rating

Front protection	IP65
------------------	------

Actuator

Switching action	
------------------	--

Switching element

Rotary positions	2
max. number of switching elements	3

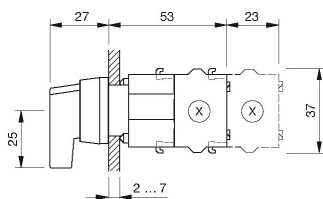
Function

Selector switch	
-----------------	--

EAO – Your Expert Partner for Human Machine Interfaces

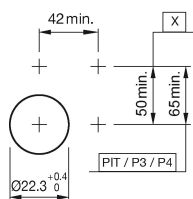
704.101.0 - Selector switch actuator 2 positions, long lever

Dimensions



X = Screw terminal

Mounting cut-outs

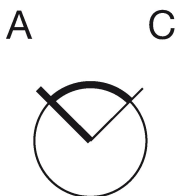


PIT = Push-in terminal

Wiring diagram



Switching positions



Additional information

Max. 3 switching elements can be clipped on
The colour of anodized aluminium parts can vary due to technical production reasons

Legend

Switching action: A = Rest, C = Maintained