

MFG. ENG.	APPROVED BY:	DATE:	APPROVED BY:	DATE:
	QA			

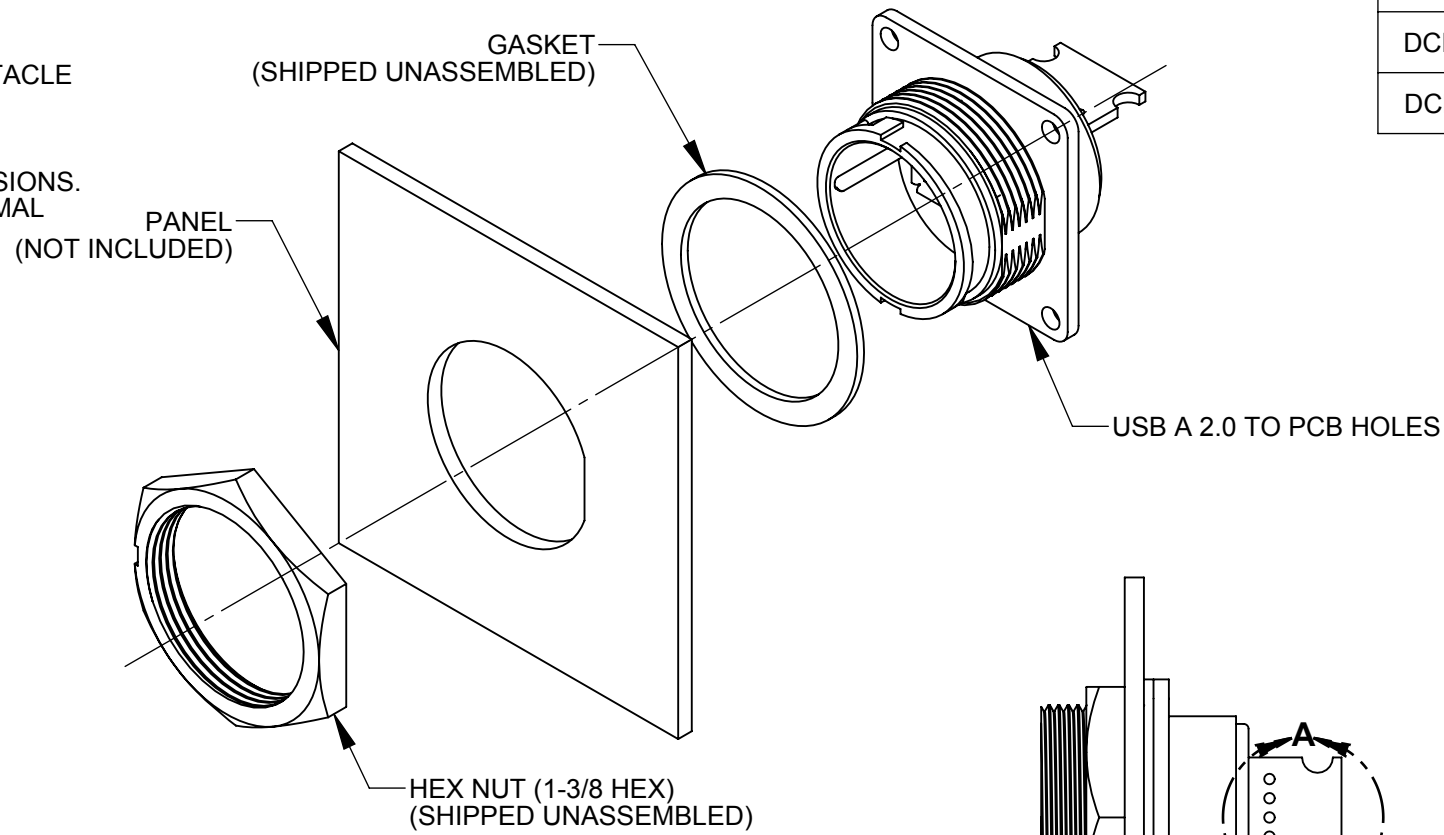
- NOTES:**
- DCP-USBAX-SC SHOWN IN EXPLODED VIEW. (USB A 2.0 RECEPTACLE TO PCB HOLES WITH QUICK CONNECT COUPLING.)
  - THE USB 2.0 RECEPTACLE STYLE IS TYPE "A".
  - THE DIMENSION DOES NOT INCLUDE GASKET COMPRESSION.
  - THE PCB PINOUT AND DIMENSIONS ARE TYPICAL FOR ALL VERSIONS.
  - UNLESS OTHERWISE SPECIFIED, DIMENSIONS WITH TWO DECIMAL PLACES HAVE TOLERANCES OF  $\pm 0.02$  [ $\pm 0.5$  mm].

**MATERIALS:**  
 GASKET: ELASTOMER, BLACK  
 HEX NUT: THERMOPLASTIC, BLACK  
 USB PANEL HOUSING: THERMOPLASTIC, BLACK  
 USB RECEPTACLE:  
 SHELL: COPPER ALLOY, TIN PLATED  
 CONTACTS: COPPER ALLOY, GOLD PLATED  
 INSULATOR: THERMOPLASTIC, WHITE  
 PCB: FR-4

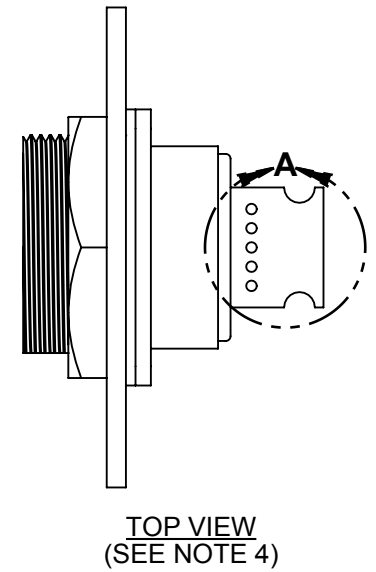
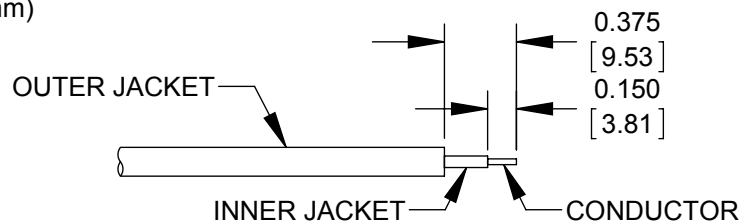
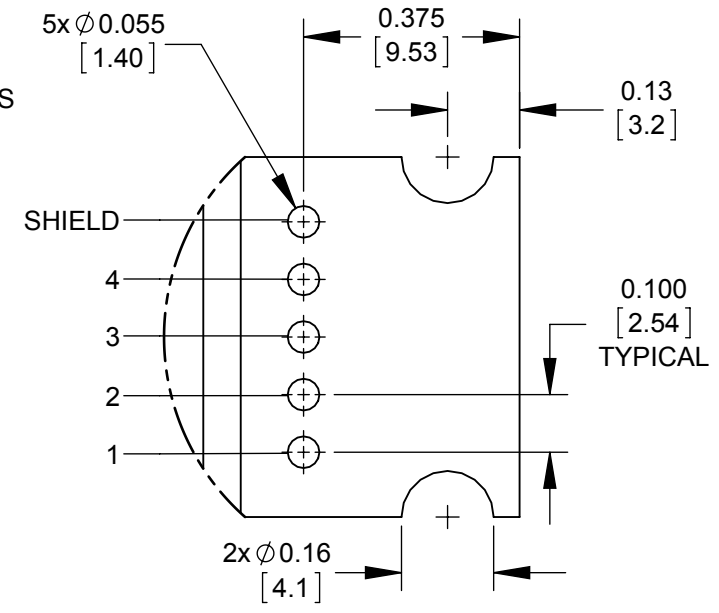
**ELECTRICAL:**  
 CURRENT RATING: 1.5 A MINIMUM  
 CONTACT RESISTANCE: 30 MILLIOHMS MAXIMUM  
 INSULATION RESISTANCE: 1000 MEGAOHMS MINIMUM  
 DIELECTRIC WITHSTANDING VOLTAGE: 500V AC

**PRODUCT RATING:**  
 IP-67 & IP-68, NEMA 250 (6P), WHEN MATED

**OTHER:**  
 OPERATING TEMPERATURE:  $-25^{\circ}\text{C}$  TO  $+85^{\circ}\text{C}$  [ $-13^{\circ}\text{F}$  TO  $+185^{\circ}\text{F}$ ]  
 RECOMMENDED PANEL THICKNESS:  
 QUICK CONNECT COUPLING: 1/32" TO 3/16" (0.8mm to 4.8mm)  
 THREADED COUPLING: 1/32" TO 5/32" (0.8mm to 3.9mm)

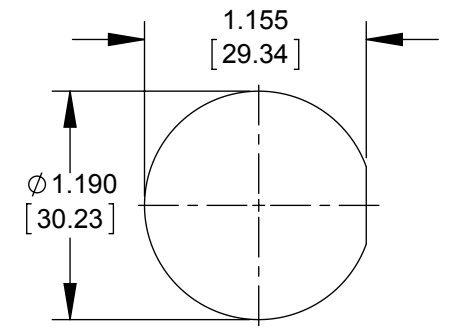
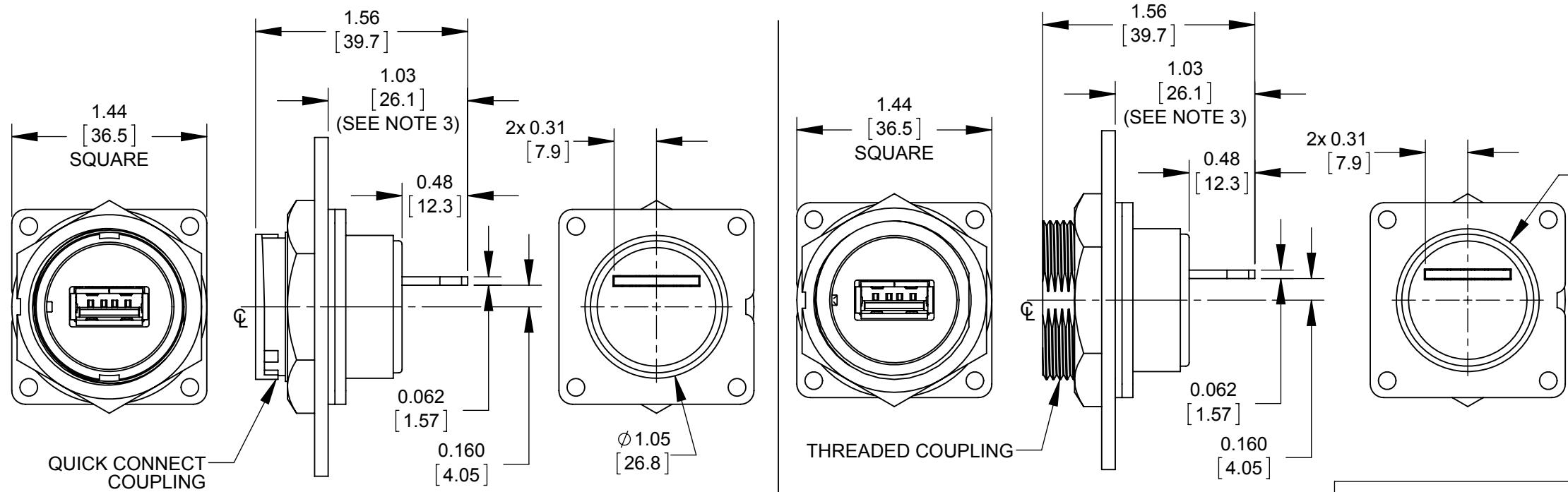


PART NUMBER	COUPLING TYPE	DESCRIPTION
DCP-USBAX-SC	QUICK CONNECT	USB A 2.0 TO PCB HOLES
DCP-USBAT-SC	THREADED	USB A 2.0 TO PCB HOLES



RECOMMENDED CABLE STRIPPING DETAIL (TYPICAL FOR ALL CONDUCTORS)

DETAIL A SCALE 3:1 (SEE NOTE 4)



RECOMMENDED PANEL CUT-OUT QUICK CONNECT COUPLING OR THREADED COUPLING

DIMENSIONS IN BRACKET [ ] ARE METRIC.

RoHS COMPLIANT

**PRELIMINARY** **CUSTOMER DRAWING**

0A	JGK	9/24/14	DRAWING CREATED PER PDR #14007, QUOTE #100113 & #100167.
REV.	INIT.	DATE	DESCRIPTION
	JGK	9/24/14	ORIG. DRAWN BY: DATE: 9/24/14
ALL INFORMATION ILLUSTRATED IS THE PROPERTY OF CONXALL CORPORATION. UNAUTHORIZED DUPLICATION OR DISTRIBUTION OF THIS DOCUMENT IS PROHIBITED.			<p>601 E. WILDWOOD VILLA PARK, IL 60181</p>
ALL UNITS ARE IN FEET, INCHES, FRACTION OF INCHES AND DECIMALS. UNLESS OTHERWISE SPECIFIED TOLERANCES: 3 PLACE DECIMALS ±.005 ANGLES ±1° FRACTIONS ±1/16			
APPROVED BY:		TITLE: USB A PANEL CONNECTOR USB A TO PCB HOLES DATA-CON-X	
SCALE: 1:1	SIZE: B	SHEET: 1 OF 1	CUSTOMER: STANDARD PRODUCT
FILE: SAME AS P/N	DIRECTORY: SLW	PART NUMBER: DCP-USBAX-SC SERIES	REV: 0A

# Mouser Electronics

Authorized Distributor

Click to View Pricing, Inventory, Delivery & Lifecycle Information:

[Switchcraft:](#)

[DCP-USBAB-SC](#) [DCP-USBAT-SC](#)