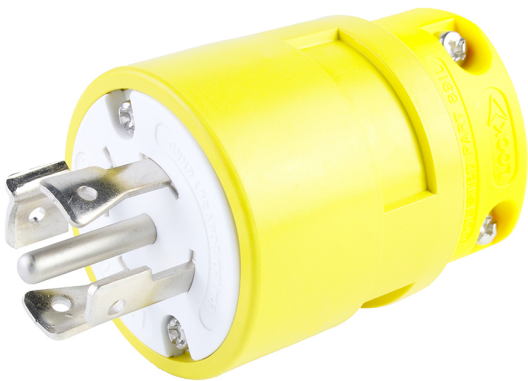




Part Number : 1301420014
Product Description : Super-Safeway Plug with Locking Blade, 4 Pole/5 Wire, NEMA L21-20, 3ø 208V
Series Number : 130142
Status : Active
Product Category : Wiring Devices
Engineering Number : 2681



Product Environment Compliance

Compliance

| | |
|--------------------|--------------|
| China RoHS | Not Reviewed |
| EU ELV | Not Reviewed |
| Low-Halogen Status | Not Reviewed |
| REACH SVHC | Not Reviewed |
| EU RoHS | Not Reviewed |

Multiple Part Product Compliance Statements

- Eu RoHS
- REACH SVHC
- Low-Halogen

Multiple Part Industry Compliance Documents

- IPC 1752A Class C
- IPC 1752A Class D
- Molex Product Compliance Declaration
- IEC-62474
- chemSHERPA (xml)

EU RoHS Certificate of Compliance

Part Details

General

| | |
|--------|--------|
| Status | Active |
|--------|--------|

| | |
|--------------------|--|
| Category | Wiring Devices |
| Series | 130142 |
| Description | Super-Safeway Plug with Locking Blade, 4 Pole/5 Wire, NEMA L21-20, 3Ø 208V |
| IP Rating | N/A |
| NEMA Configuration | NEMA L21-20 |
| Product Family | Heavy-Duty Industrial Wiring Devices |
| Product Name | Super-Safeway |
| Specialty | N/A |
| Type | Plug |
| UPC | 78678870564 |

Agency

| | |
|-----|--------|
| CSA | LR6837 |
| UL | E10176 |

Electrical

| | |
|-------------------------------|---------|
| Current - Maximum per Contact | 20.0A |
| GFCI | No |
| Voltage - Maximum | 3Ø 208V |

Physical

| | |
|-------------------|---------------|
| Cord Type | N/A |
| Flange | No |
| Flip Lid | No |
| Gender | Male |
| Length | N/A |
| Lighted Connector | No |
| Locking Blade | Yes |
| Poles | 4-pole/5-wire |
| Receptacle Type | N/A |