

SAMZO

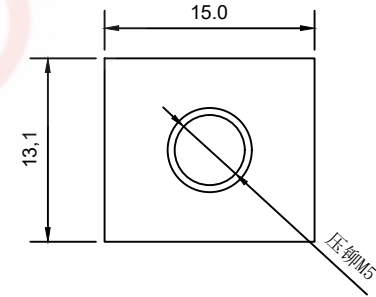
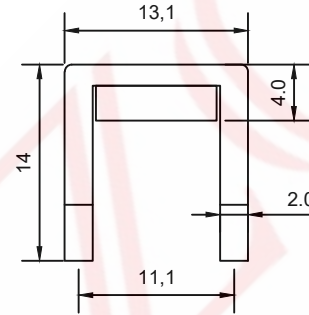
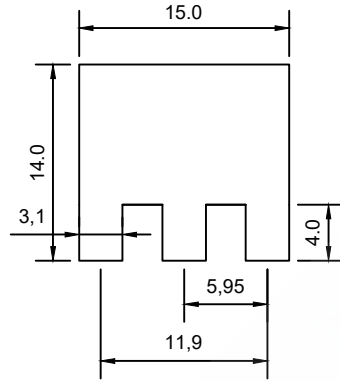
REAC/ROHS

REV	ECN NO	DESCRIPTION	DESIGN	APPROVAL	DATE
A1	NEW	Replace frame			2018.06.12

技术要求:

Technical requirements:

- 打铜底0.5-1UM, 镍底2-2.5UM, 哑锡3-5UM。
Copper base 0.5 - 1 UM, nickel base 2 - 2.5 UM, matte tin 3 - 5 UM.
- 不得有脚变形, 毛刺等缺陷。
There shall be no defects such as pin deformation and burrs.
- 插脚尖部符合可焊性要求。
The tip of the insertion pin shall meet the solderability requirements.
- 螺纹需符合通止规要求。
The thread shall meet the requirements of the go and no-go gauge.
- 材质: 黄铜H65。
Material: Brass H65.
- 过载电流: 110A
Overload current: 110A
- 螺孔为压铆 M5
The screw holes are press-riveted M5
- 未标注尺寸公差值按GB/T1184-1996H级
Unmarked dimensional tolerance values are in accordance with Grade H of GB/T1184-1996



1315 100 40 0 M5

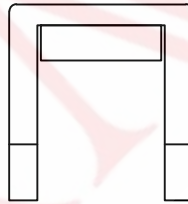
SERISE:
13*15mm

FOOT HIGH:
H4.0mm

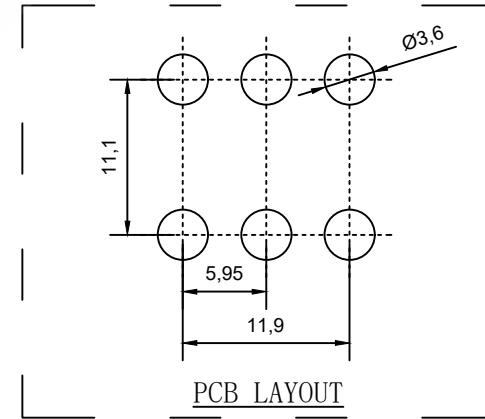
SCREW HOLE:
M5

HIGH:
H10.0mm

CUSTOM CODE:
ROUTINE



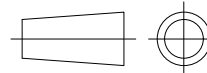
压铆M5



PCB LAYOUT

ITEM	DESCRIPTION	MATERIAL	QTY	FINISH/COLOR					
A	Subject	H62(Y2)	1	tin plating					
					GENERAL TOLERANCE				
					≥0~2<	±0.15			
					DESIGN	WANGGUIFA	2018.06.12	≥2~5<	±0.25
					CHECKED	ZHENGUILAN	2018.06.12	≥0~2<	±0.15
					APPROVED	LILIANJIANG	2018.06.14	≥5	±0.35

FIRST VIEW



The copyright belongs to samzo parts [China] Co., Ltd. please use the material after samzo parts agree to authorize. The final right of interpretation belongs to samzo parts.
WWW.KKK-JP.COM

TITLE::

13*15-H10+4mm (M5)

DWG NO: 1315-P001

PART NO: 1315-20230911

MODEL NO: 1315100400M5

NAME:

PCB soldering terminal

SAMZO COMPONENTS
Electronic switch and connector manufacturer

SCALE 1:1 UNIT mm