

UK 10-DREHSI/K (5X25) - Fuse modular terminal block



3005688

<https://www.phoenixcontact.com/us/products/3005688>

Please be informed that the data shown in this PDF document is generated from our online catalog. Please find the complete data in the user documentation. Our general terms of use for downloads are valid.



Fuse terminal block for cartridge fuse insert, cross section: 0.5 - 16 mm², AWG: 24 - 6, width: 12 mm, color: black

Your advantages

- Can be bridged with FBI ... fixed bridge

Commercial data

Item number	3005688
Packing unit	50 pc
Minimum order quantity	50 pc
Sales key	BE12
Product key	BE1235
Catalog page	Page 497 (C-1-2019)
GTIN	4017918091262
Weight per piece (including packing)	34.1 g
Weight per piece (excluding packing)	32.83 g
Customs tariff number	85369095
Country of origin	PL

UK 10-DREHSI/K (5X25) - Fuse modular terminal block



3005688

<https://www.phoenixcontact.com/us/products/3005688>

Technical data

Product properties

Product type	Fuse terminal block
Number of connections	2
Number of rows	1
Potentials	1

Insulation characteristics

Overvoltage category	III
Degree of pollution	3

Electrical properties

Fuse type	Glass / ceramics / ...
Rated surge voltage	4 kV
Maximum power dissipation for nominal condition	2.43 W
Fuse	G / 5 x 25

Connection data

Number of connections per level	2
Nominal cross section	16 mm ²

Level 1 above 1 below 1

Screw thread	M4
Tightening torque	1.5 ... 1.8 Nm
Stripping length	11 mm
Internal cylindrical gage	B6
Connection in acc. with standard	IEC 60947-7-3
Conductor cross section rigid	0.5 mm ² ... 16 mm ²
Cross section AWG	20 ... 6 (converted acc. to IEC)
Conductor cross section flexible	0.5 mm ² ... 16 mm ²
Conductor cross section, flexible [AWG]	20 ... 6 (converted acc. to IEC)
Conductor cross-section flexible (ferrule without plastic sleeve)	0.5 mm ² ... 10 mm ²
Flexible conductor cross section (ferrule with plastic sleeve)	0.5 mm ² ... 10 mm ²
Cross-section with insertion bridge, rigid	10 mm ²
Cross-section with insertion bridge, flexible	10 mm ²
2 conductors with same cross section, solid	0.5 mm ² ... 4 mm ²
2 conductors with same cross section, flexible	0.5 mm ² ... 4 mm ²
2 conductors with same cross section, flexible, with ferrule without plastic sleeve	0.5 mm ² ... 4 mm ²
2 conductors with the same cross section, flexible, with TWIN ferrule with plastic sleeve	0.5 mm ² ... 10 mm ²
Nominal current	10 A
Maximum load current	10 A
Nominal voltage	500 V

UK 10-DREHSI/K (5X25) - Fuse modular terminal block



3005688

<https://www.phoenixcontact.com/us/products/3005688>

	800 V (As a disconnect terminal block)
Nominal cross section	1.5 mm ²

Dimensions

Width	12 mm
Height	62 mm
Depth on NS 32	62.2 mm
Depth on NS 35/7,5	57.2 mm
Depth on NS 35/15	64.7 mm

Material specifications

Color	black
Flammability rating according to UL 94	V2
Insulating material group	I
Insulating material	PA
Static insulating material application in cold	-60 °C
Temperature index of insulation material (DIN EN 60216-1 (VDE 0304-21))	130 °C
Relative insulation material temperature index (Elec., UL 746 B)	130 °C
Fire protection for rail vehicles (DIN EN 45545-2) R22	HL 1 - HL 3
Fire protection for rail vehicles (DIN EN 45545-2) R23	HL 1 - HL 3
Fire protection for rail vehicles (DIN EN 45545-2) R24	HL 1 - HL 3
Fire protection for rail vehicles (DIN EN 45545-2) R26	HL 1 - HL 3
Calorimetric heat release NFPA 130 (ASTM E 1354)	28 MJ/kg
Surface flammability NFPA 130 (ASTM E 162)	passed
Specific optical density of smoke NFPA 130 (ASTM E 662)	passed
Smoke gas toxicity NFPA 130 (SMP 800C)	passed

Mechanical properties

Mechanical data

Open side panel	No
-----------------	----

Environmental and real-life conditions

Oscillation/broadband noise

Specification	DIN EN 50155 (VDE 0115-200):2008-03
Spectrum	Service life test category 1, class B, body mounted
Frequency	$f_1 = 5 \text{ Hz}$ to $f_2 = 150 \text{ Hz}$
ASD level	1.857 (m/s ²)/Hz
Acceleration	0.8g
Test duration per axis	5 h
Test directions	X-, Y- and Z-axis
Result	Test passed

Shocks

UK 10-DREHSI/K (5X25) - Fuse modular terminal block



3005688

<https://www.phoenixcontact.com/us/products/3005688>

Specification	DIN EN 50155 (VDE 0115-200):2008-03
Pulse shape	Half-sine
Acceleration	5g
Shock duration	30 ms
Number of shocks per direction	3
Test directions	X-, Y- and Z-axis (pos. and neg.)
Result	Test passed

Ambient conditions

Ambient temperature (operation)	-60 °C ... 110 °C (Operating temperature range incl. self-heating; for max. short-term operating temperature, see RTI Elec.)
Ambient temperature (storage/transport)	-25 °C ... 60 °C (for a short time, not exceeding 24 h, -60 °C to +70 °C)
Ambient temperature (assembly)	-5 °C ... 70 °C
Ambient temperature (actuation)	-5 °C ... 70 °C
Permissible humidity (operation)	20 % ... 90 %
Permissible humidity (storage/transport)	30 % ... 70 %

Standards and regulations

Connection in acc. with standard	IEC 60947-7-3
----------------------------------	---------------

Mounting

Mounting type	NS 35/7,5
	NS 35/15
	NS 32

UK 10-DREHSI/K (5X25) - Fuse modular terminal block

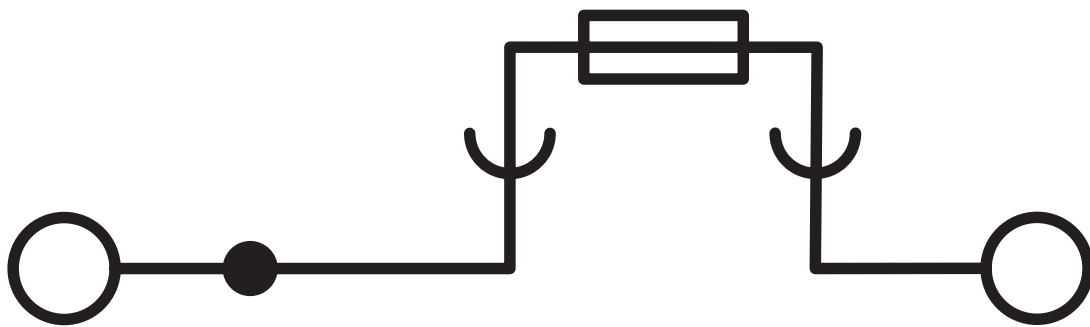


3005688

<https://www.phoenixcontact.com/us/products/3005688>

Drawings

Circuit diagram



UK 10-DREHSI/K (5X25) - Fuse modular terminal block





3005688


<https://www.phoenixcontact.com/us/products/3005688>


Approvals

To download certificates, visit the product detail page: <https://www.phoenixcontact.com/us/products/3005688>

 IECEE CB Scheme Approval ID: NL-56826/A1				
	Nominal voltage U_N	Nominal current I_N	Cross section AWG	Cross section mm^2
	800 V	-	-	0.5 - 16

 EAC Approval ID: RU C-DE.BL08.B.00534				
---	--	--	--	--

 KEMA-KEUR Approval ID: 71-119846				
	Nominal voltage U_N	Nominal current I_N	Cross section AWG	Cross section mm^2
	-	10 A	-	0.5 - 16

 cULus Recognized Approval ID: E60425				
	Nominal voltage U_N	Nominal current I_N	Cross section AWG	Cross section mm^2
Use group B	300 V	20 A	24 - 6	-
Use group C	300 V	20 A	24 - 6	-
Use group F	500 V	20 A	24 - 6	-

UK 10-DREHSI/K (5X25) - Fuse modular terminal block



3005688

<https://www.phoenixcontact.com/us/products/3005688>

Classifications

ECLASS

ECLASS-11.0	27141116
ECLASS-12.0	27141116
ECLASS-13.0	27250113

ETIM

ETIM 9.0	EC000899
----------	----------

UNSPSC

UNSPSC 21.0	39121400
-------------	----------

UK 10-DREHSI/K (5X25) - Fuse modular terminal block



3005688

<https://www.phoenixcontact.com/us/products/3005688>

Environmental product compliance

EU RoHS

Fulfills EU RoHS substance requirements	Yes
Exemption	6(c)

China RoHS

Environment friendly use period (EFUP)	EFUP-50
	An article-related China RoHS declaration table can be found in the download area for the respective article under "Manufacturer declaration". For all articles with EFUP-E, no China RoHS declaration table issued and required.

EU REACH SVHC


REACH candidate substance (CAS No.)	Lead(CAS: 7439-92-1)
SCIP	003326db-099a-49e6-b678-332cd325be6f

UK 10-DREHSI/K (5X25) - Fuse modular terminal block

3005688

<https://www.phoenixcontact.com/us/products/3005688>

Accessories

 Note: Applying some accessories below might limit this product.

FBI 2-12 - Fixed bridge

0200075

<https://www.phoenixcontact.com/us/products/0200075>

Fixed bridge, pitch: 12 mm, number of positions: 2, length: 8 mm, color: silver



FBI 10-12 - Fixed bridge

0203454

<https://www.phoenixcontact.com/us/products/0203454>

Fixed bridge, pitch: 12 mm, number of positions: 10, length: 8 mm, color: silver



 Max. current carrying capacity: 63 A

UK 10-DREHSI/K (5X25) - Fuse modular terminal block

3005688

<https://www.phoenixcontact.com/us/products/3005688>

FBI 12-12 - Fixed bridge

1002325

<https://www.phoenixcontact.com/us/products/1002325>

Fixed bridge, pitch: 12 mm, number of positions: 12, length: 8 mm, color: silver



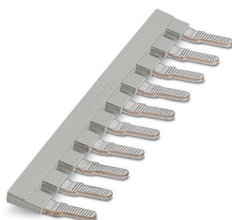
 Max. current carrying capacity: 63 A


EB 10-12 - Insertion bridge

3006137

<https://www.phoenixcontact.com/us/products/3006137>

Insertion bridge, pitch: 12 mm, number of positions: 10, color: gray



 Max. current carrying capacity: 63 A

UK 10-DREHSI/K (5X25) - Fuse modular terminal block

3005688

<https://www.phoenixcontact.com/us/products/3005688>

NS 32 PERF 2000MM-VPE 10 - DIN rail perforated

1201002

<https://www.phoenixcontact.com/us/products/1201002>



DIN rail perforated, Pack of 10 (20 m), acc. to EN 60715, material: Steel, galvanized, passivated with a thick layer, G profile, color: silver

NS 32 UNPERF 2000MM-VPE 10 - DIN rail, unperforated

1201015

<https://www.phoenixcontact.com/us/products/1201015>



DIN rail, unperforated, Pack of 10 (20 m), acc. to EN 60715, material: Steel, galvanized, passivated with a thick layer, G profile, color: silver

UK 10-DREHSI/K (5X25) - Fuse modular terminal block

3005688

<https://www.phoenixcontact.com/us/products/3005688>

NS 35/ 7,5 PERF 2000MM - DIN rail perforated

0801733

<https://www.phoenixcontact.com/us/products/0801733>



DIN rail perforated, Pack of 25 (50 m), acc. to EN 60715, material: Steel, galvanized, passivated with a thick layer, Standard profile, color: silver

NS 35/ 7,5 UNPERF 2000MM - DIN rail, unperforated

0801681

<https://www.phoenixcontact.com/us/products/0801681>



DIN rail, unperforated, Pack of 25 (50 m), acc. to EN 60715, material: Steel, galvanized, passivated with a thick layer, Standard profile, color: silver

UK 10-DREHSI/K (5X25) - Fuse modular terminal block



3005688

<https://www.phoenixcontact.com/us/products/3005688>

NS 35/ 7,5 WH PERF 2000MM - DIN rail perforated

1204119

<https://www.phoenixcontact.com/us/products/1204119>



DIN rail perforated, Pack of 25 (50 m), acc. to EN 60715, material: Steel, Galvanized, white passivated, Standard profile, color: silver

NS 35/ 7,5 WH UNPERF 2000MM-VPE 10 - DIN rail, unperforated

1204122

<https://www.phoenixcontact.com/us/products/1204122>



DIN rail, unperforated, Pack of 10 (20 m), acc. to EN 60715, material: Steel, Galvanized, white passivated, Standard profile, color: silver

UK 10-DREHSI/K (5X25) - Fuse modular terminal block

3005688

<https://www.phoenixcontact.com/us/products/3005688>

NS 35/ 7,5 AL UNPERF 2000MM - DIN rail, unperforated

0801704

<https://www.phoenixcontact.com/us/products/0801704>



DIN rail, unperforated, Pack of 25 (50 m), acc. to EN 60715, material: Aluminum, uncoated, Standard profile, color: silver

NS 35/ 7,5 ZN PERF 2000MM - DIN rail perforated

1206421

<https://www.phoenixcontact.com/us/products/1206421>



DIN rail perforated, Pack of 25 (50 m), acc. to EN 60715, material: Steel, galvanized, Standard profile, color: silver

UK 10-DREHSI/K (5X25) - Fuse modular terminal block

3005688

<https://www.phoenixcontact.com/us/products/3005688>

NS 35/ 7,5 ZN UNPERF 2000MM - DIN rail, unperforated

1206434

<https://www.phoenixcontact.com/us/products/1206434>



DIN rail, unperforated, Pack of 25 (50 m), acc. to EN 60715, material: Steel, galvanized, Standard profile, color: silver

NS 35/ 7,5 CU UNPERF 2000MM-VPE 10 - DIN rail, unperforated

0801762

<https://www.phoenixcontact.com/us/products/0801762>



DIN rail, unperforated, Pack of 10 (20 m), acc. to EN 60715, material: Copper, uncoated, Standard profile, color: copper-colored

UK 10-DREHSI/K (5X25) - Fuse modular terminal block

3005688

<https://www.phoenixcontact.com/us/products/3005688>

NS 35/ 7,5 CAP - End cap

1206560

<https://www.phoenixcontact.com/us/products/1206560>

DIN rail end piece, for DIN rail NS 35/7.5



NS 35/15 PERF 2000MM - DIN rail perforated

1201730

<https://www.phoenixcontact.com/us/products/1201730>



DIN rail perforated, Pack of 25 (50 m), similar to EN 60715, material: Steel, galvanized, passivated with a thick layer, Standard profile, color: silver

UK 10-DREHSI/K (5X25) - Fuse modular terminal block

3005688

<https://www.phoenixcontact.com/us/products/3005688>

NS 35/15 UNPERF 2000MM - DIN rail, unperforated

1201714

<https://www.phoenixcontact.com/us/products/1201714>



DIN rail, unperforated, Pack of 25 (50 m), similar to EN 60715, material: Steel, galvanized, passivated with a thick layer, Standard profile, color: silver

NS 35/15 WH PERF 2000MM - DIN rail perforated

0806602

<https://www.phoenixcontact.com/us/products/0806602>



DIN rail perforated, Pack of 25 (50 m), similar to EN 60715, material: Steel, Galvanized, white passivated, Standard profile, color: white

UK 10-DREHSI/K (5X25) - Fuse modular terminal block

3005688

<https://www.phoenixcontact.com/us/products/3005688>

NS 35/15 WH UNPERF 2000MM-VPE 10 - DIN rail, unperforated

1204135

<https://www.phoenixcontact.com/us/products/1204135>



DIN rail, unperforated, Pack of 10 (20 m), similar to EN 60715, material: Steel, Galvanized, white passivated, Standard profile, color: silver

NS 35/15 AL UNPERF 2000MM - DIN rail, unperforated

1201756

<https://www.phoenixcontact.com/us/products/1201756>



DIN rail, unperforated, similar to EN 60715, material: Aluminum, uncoated, Standard profile, color: silver

UK 10-DREHSI/K (5X25) - Fuse modular terminal block

3005688

<https://www.phoenixcontact.com/us/products/3005688>

NS 35/15 ZN PERF 2000MM - DIN rail perforated

1206599

<https://www.phoenixcontact.com/us/products/1206599>



DIN rail perforated, Pack of 25 (50 m), similar to EN 60715, material: Steel, galvanized, Standard profile, color: silver

NS 35/15 ZN UNPERF 2000MM - DIN rail, unperforated

1206586

<https://www.phoenixcontact.com/us/products/1206586>



DIN rail, unperforated, Pack of 25 (50 m), similar to EN 60715, material: Steel, galvanized, Standard profile, color: silver

UK 10-DREHSI/K (5X25) - Fuse modular terminal block



3005688

<https://www.phoenixcontact.com/us/products/3005688>

NS 35/15 CU UNPERF 2000MM-VPE 10 - DIN rail, unperforated

1201895

<https://www.phoenixcontact.com/us/products/1201895>



DIN rail, unperforated, Pack of 10 (20 m), similar to EN 60715, material: Copper, uncoated, Standard profile, color: copper-colored

NS 35/15 CAP - End cap

1206573

<https://www.phoenixcontact.com/us/products/1206573>

DIN rail end piece, for DIN rail NS 35/15



UK 10-DREHSI/K (5X25) - Fuse modular terminal block

3005688

<https://www.phoenixcontact.com/us/products/3005688>

NS 35/15-2,3 UNPERF 2000MM-VPE 10 - DIN rail, unperforated

1201798

<https://www.phoenixcontact.com/us/products/1201798>



DIN rail, unperforated, Pack of 10 (20 m), acc. to EN 60715, material: Steel, galvanized, passivated with a thick layer, Standard profile 2.3 mm, color: silver

ZB 6:UNBEDRUCKT - Zack marker strip

1051003

<https://www.phoenixcontact.com/us/products/1051003>



Zack marker strip, Strip, white, unlabeled, can be labeled with: PLOTMARK, CMS-P1-PLOTTER, mounting type: snapped, for terminal block width: 6.2 mm, lettering field size: 6.15 x 10.5 mm, Number of individual labels: 10

UK 10-DREHSI/K (5X25) - Fuse modular terminal block

3005688

<https://www.phoenixcontact.com/us/products/3005688>

ZB 6 CUS - Zack marker strip

0824992

<https://www.phoenixcontact.com/us/products/0824992>



Zack marker strip, can be ordered: Strip, white, labeled according to customer specifications, mounting type: snap into tall marker groove, for terminal block width: 6.2 mm, lettering field size: 6.15 x 10.5 mm, Number of individual labels: 10

ZB 6,LGS:FORTL.ZAHLEN - Zack marker strip

1051016

<https://www.phoenixcontact.com/us/products/1051016>



Zack marker strip, Strip, white, labeled, can be labeled with: CMS-P1-PLOTTER, printed horizontally: consecutive numbers 1 ... 10, 11 ... 20, etc. up to 491 ... 500, mounting type: snapped, for terminal block width: 6.2 mm, lettering field size: 6.15 x 10.5 mm, Number of individual labels: 10

UK 10-DREHSI/K (5X25) - Fuse modular terminal block



3005688

<https://www.phoenixcontact.com/us/products/3005688>

ZB 6,QR:FORTL.ZAHLEN - Zack marker strip

1051029

<https://www.phoenixcontact.com/us/products/1051029>



Zack marker strip, Strip, white, labeled, can be labeled with: CMS-P1-PLOTTER, Printed vertically: consecutive numbers 1 ... 10, 11 ... 20, etc. up to 491 ... 500, mounting type: snapped, for terminal block width: 6.2 mm, lettering field size: 6.15 x 10.5 mm, Number of individual labels: 10

ZB 6,LGS:GLEICHE ZAHLEN - Zack marker strip

1051032

<https://www.phoenixcontact.com/us/products/1051032>



Zack marker strip, Strip, white, labeled, can be labeled with: CMS-P1-PLOTTER, printed horizontally: Identical numbers 1 or 2, etc. up to 100, mounting type: snapped, for terminal block width: 6.2 mm, lettering field size: 6.15 x 10.5 mm, Number of individual labels: 10

UK 10-DREHSI/K (5X25) - Fuse modular terminal block



3005688

<https://www.phoenixcontact.com/us/products/3005688>

ZB 6,LGS:L1-N,PE - Marker for terminal blocks

1051414

<https://www.phoenixcontact.com/us/products/1051414>



Marker for terminal blocks, Strip, white, labeled, can be labeled with: CMS-P1-PLOTTER, horizontal: L1, L2, L3, N, PE, L1, L2, L3, N, PE, mounting type: snapped, for terminal block width: 6.2 mm, lettering field size: 6.15 x 10.5 mm, Number of individual labels: 10

ZB 6,LGS:U-N - Marker for terminal blocks

1051430

<https://www.phoenixcontact.com/us/products/1051430>



Marker for terminal blocks, Strip, white, labeled, can be labeled with: CMS-P1-PLOTTER, printed horizontally: U, V, W, N, GND, U, V, W, N, GND, mounting type: snapped, for terminal block width: 6.2 mm, lettering field size: 6.15 x 10.5 mm, Number of individual labels: 10

UK 10-DREHSI/K (5X25) - Fuse modular terminal block



3005688

<https://www.phoenixcontact.com/us/products/3005688>

UC-TM 6 - Marker for terminal blocks

0818085

<https://www.phoenixcontact.com/us/products/0818085>



Marker for terminal blocks, Sheet, white, unlabeled, can be labeled with: BLUEMARK ID COLOR, BLUEMARK ID, BLUEMARK CLED, PLOTMARK, CMS-P1-PLOTTER, mounting type: snapped, for terminal block width: 6.2 mm, lettering field size: 5.6 x 10.5 mm, Number of individual labels: 80

UC-TM 6 CUS - Marker for terminal blocks

0824589

<https://www.phoenixcontact.com/us/products/0824589>



Marker for terminal blocks, can be ordered: by sheet, white, labeled according to customer specifications, mounting type: snap into tall marker groove, for terminal block width: 6.2 mm, lettering field size: 5.6 x 10.5 mm, Number of individual labels: 80

UK 10-DREHSI/K (5X25) - Fuse modular terminal block

3005688

<https://www.phoenixcontact.com/us/products/3005688>

UCT-TM 6 - Marker for terminal blocks

0828736

<https://www.phoenixcontact.com/us/products/0828736>



Marker for terminal blocks, Sheet, white, unlabeled, can be labeled with: TOPMARK NEO, TOPMARK LASER, BLUEMARK ID COLOR, BLUEMARK ID, BLUEMARK CLED, THERMOMARK PRIME, THERMOMARK CARD 2.0, THERMOMARK CARD, mounting type: snapped, for terminal block width: 6.2 mm, lettering field size: 5.6 x 10.5 mm, Number of individual labels: 60

UCT-TM 6 CUS - Marker for terminal blocks

0829602

<https://www.phoenixcontact.com/us/products/0829602>



Marker for terminal blocks, can be ordered: by sheet, white, labeled according to customer specifications, mounting type: snap into tall marker groove, for terminal block width: 6.2 mm, lettering field size: 5.6 x 10.5 mm, Number of individual labels: 60

UK 10-DREHSI/K (5X25) - Fuse modular terminal block

3005688

<https://www.phoenixcontact.com/us/products/3005688>

CLIPFIX 35 - End bracket

3022218

<https://www.phoenixcontact.com/us/products/3022218>



Quick mounting end clamp for NS 35/7,5 DIN rail or NS 35/15 DIN rail, with marking option, width: 9.5 mm, color: gray

CLIPFIX 35-5 - End bracket

3022276

<https://www.phoenixcontact.com/us/products/3022276>



Quick mounting end clamp for NS 35/7,5 DIN rail or NS 35/15 DIN rail, with marking option, with parking option for FBS...5, FBS...6, KSS 5, KSS 6, width: 5.15 mm, color: gray

UK 10-DREHSI/K (5X25) - Fuse modular terminal block

3005688

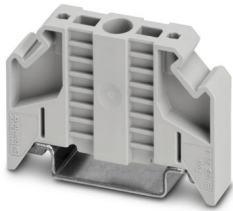
<https://www.phoenixcontact.com/us/products/3005688>

E/NS 35 N - End bracket

0800886

<https://www.phoenixcontact.com/us/products/0800886>

End clamp, width: 9.5 mm, color: gray



E/UK - End bracket

1201442

<https://www.phoenixcontact.com/us/products/1201442>

End bracket, Mounting on a DIN rail NS 32 or NS 35, material: PA, color: gray



UK 10-DREHSI/K (5X25) - Fuse modular terminal block



3005688

<https://www.phoenixcontact.com/us/products/3005688>

E/UK 1 - End bracket

1201413

<https://www.phoenixcontact.com/us/products/1201413>



End clamps, for supporting the ends of double-level and three-level terminal blocks, width: 10 mm, color: gray

PSBJ 4/15/6 FARBLOS - Test plug strip

0303419

<https://www.phoenixcontact.com/us/products/0303419>



Test plug strip, number of positions: 1, color: transparent

UK 10-DREHSI/K (5X25) - Fuse modular terminal block

3005688

<https://www.phoenixcontact.com/us/products/3005688>

PSBJ 4/15/6 WH - Test plug strip

0303312

<https://www.phoenixcontact.com/us/products/0303312>



Test plug strip, number of positions: 1, color: white

PSBJ 4/15/6 RD - Test plug strip

0303325

<https://www.phoenixcontact.com/us/products/0303325>



Test plug strip, number of positions: 1, color: red

UK 10-DREHSI/K (5X25) - Fuse modular terminal block

3005688

<https://www.phoenixcontact.com/us/products/3005688>

PSBJ 4/15/6 BU - Test plug strip

0303354

<https://www.phoenixcontact.com/us/products/0303354>



Test plug strip, number of positions: 1, color: blue

PSBJ 4/15/6 YE - Test plug strip

0303367

<https://www.phoenixcontact.com/us/products/0303367>



Test plug strip, number of positions: 1, color: yellow

UK 10-DREHSI/K (5X25) - Fuse modular terminal block

3005688

<https://www.phoenixcontact.com/us/products/3005688>

PSBJ 4/15/6 GN - Test plug strip

0303370

<https://www.phoenixcontact.com/us/products/0303370>



Test plug strip, number of positions: 1, color: green

PSBJ 4/15/6 VT - Test plug strip

0303383

<https://www.phoenixcontact.com/us/products/0303383>



Test plug strip, number of positions: 1, color: violet

UK 10-DREHSI/K (5X25) - Fuse modular terminal block

3005688

<https://www.phoenixcontact.com/us/products/3005688>

PSBJ 4/15/6 GY - Test plug strip

0303396

<https://www.phoenixcontact.com/us/products/0303396>



Test plug strip, number of positions: 1, color: gray

PSBJ 4/15/6 BK - Test plug strip

0303406

<https://www.phoenixcontact.com/us/products/0303406>



Test plug strip, number of positions: 1, color: black

UK 10-DREHSI/K (5X25) - Fuse modular terminal block

3005688

<https://www.phoenixcontact.com/us/products/3005688>

PSB 4/7/6 - Test plug strip

0303299

<https://www.phoenixcontact.com/us/products/0303299>

Test plug strip, number of positions: 1, color: silver



SZS 1,0X4,0 VDE - Screwdriver

1205066

<https://www.phoenixcontact.com/us/products/1205066>

Screwdriver, slot-headed, VDE insulated, size: 1.0 x 4.0 x 100 mm, 2-component grip, with non-slip grip



UK 10-DREHSI/K (5X25) - Fuse modular terminal block



3005688

<https://www.phoenixcontact.com/us/products/3005688>

TS-KK 3 - Separating plate

2770215

<https://www.phoenixcontact.com/us/products/2770215>



Separating plate, depth: 16 mm, width: 0.5 mm, height: 14 mm, color: gray

Phoenix Contact 2024 © - all rights reserved

<https://www.phoenixcontact.com>

Phoenix Contact USA
586 Fulling Mill Road
Middletown, PA 17057, United States
(+717) 944-1300
info@phoenixcon.com