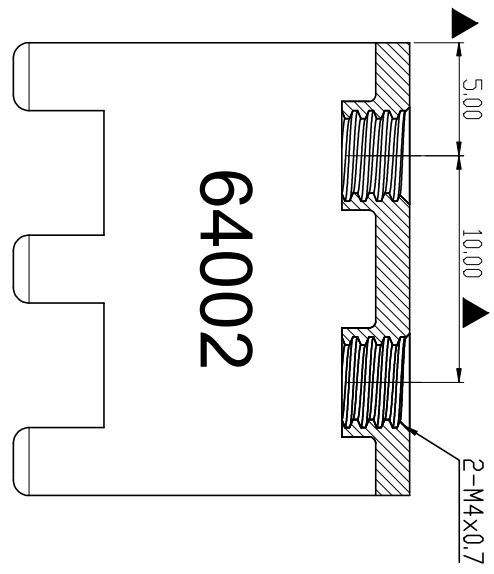
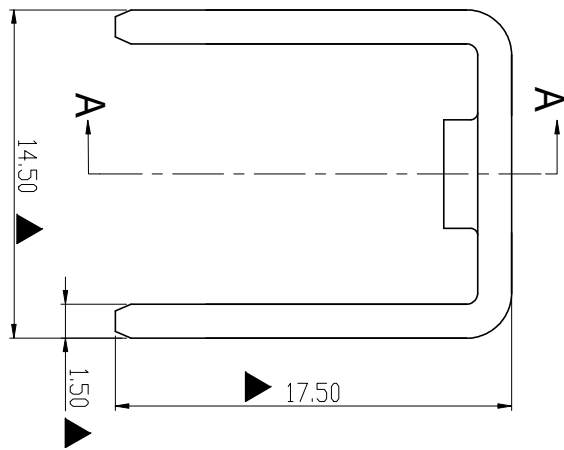
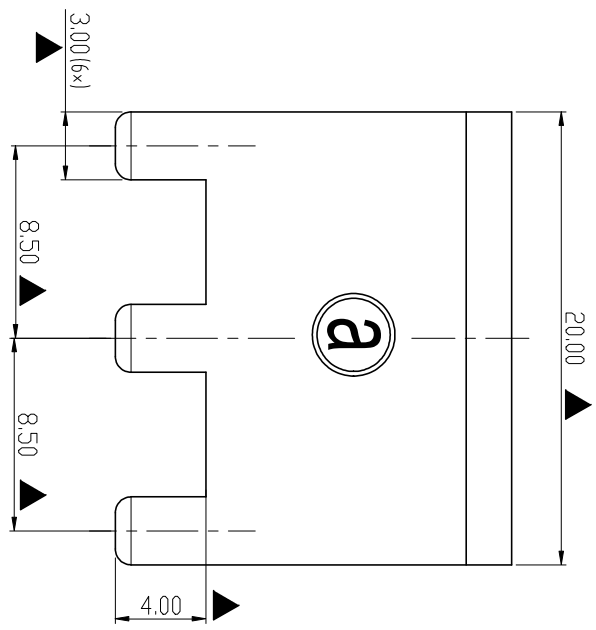


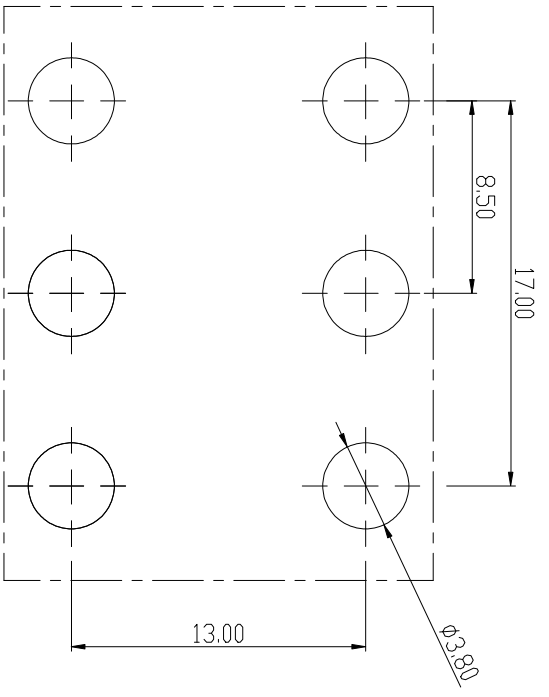
ROHS Compliant

Rev.	SIGN	DATE	DESCRIPTION	APPROVER
THIS IS CAD DRAWING. DO NOT REVISE MANUALL Y!!!				



SECTION A-A

64002



PCB LAYOUT

- Technical Specification:
1. Material: Copper alloy ,Matte Tin Plated
 2. Current: 135A.
 3. Torque: 15 lbf.in.
 4. Mark "▲" is the Critical dimension.

Amphenol		CUSTOMER COPY	
ANYTEK		ALL RIGHTS RESERVED. REPRODUCTION OR ISSUE TO THIRD PARTIES IN ANY FORM WHATSOEVER IS NOT PERMITTED WITHOUT WRITTEN AUTHORITY FROM THE PROPRIETOR. PROPERTY OF ANYTEK TECHNOLOGY CO., LTD	
TITLE	AMT64002 Stamped terminal		
PART NO.	AMT0640002TH00006	DWG NO.	8AMT0029
APPROVED	CHECKED	DESIGNED	DRAWN
	Seamus 2023.10.12	Seamus 2023.10.12	
		CUST NO.	
		UNIT:	mm
		SCALE:	NONE
		REV.:	A0
		SHEET:	01/01
		Tolerance	±0.50
			±0.40
			±0.30
		ANGLES	±1°