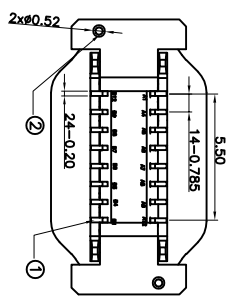
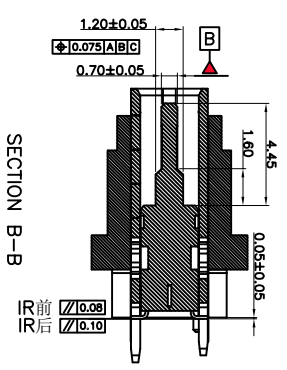
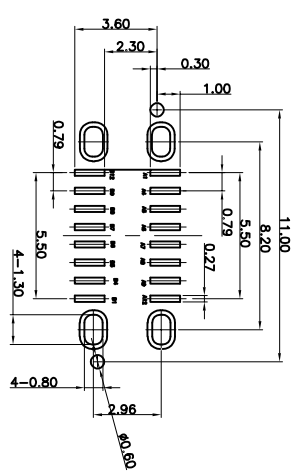
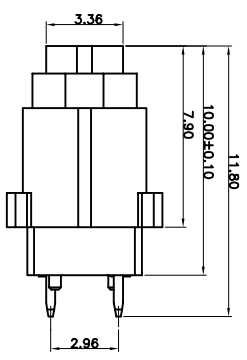
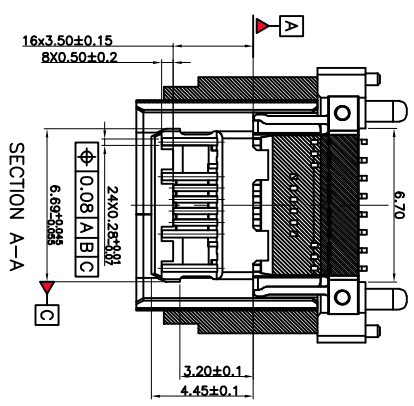
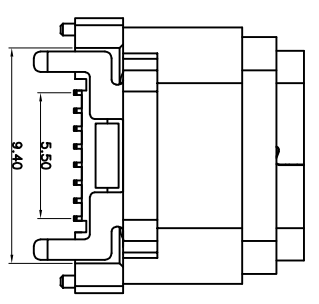
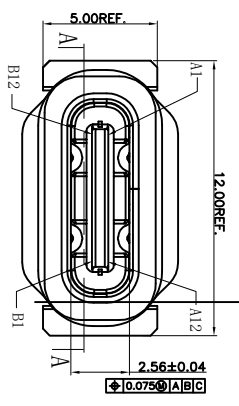
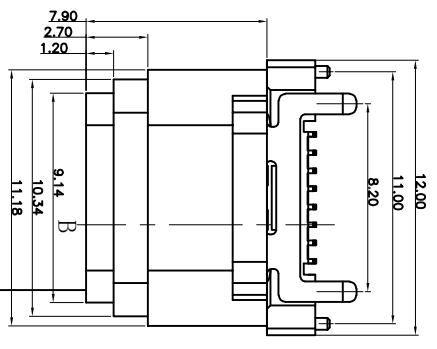


REV.	ECN NO.	DESCRIPTION	DATE	DESIGN

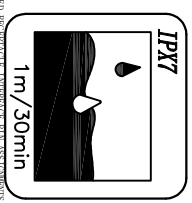


- NOTE:
- 1 MATERIAL: HIGH TEMPERATURE PLASTIC UL 94 V-0) Black
  - 2 COLOR: C7028T (=0.12mm)
  - 3 1/2 CONTACT: C7028T (=0.30mm)
  - 4 1/3 SHELL: STAINLESS STEEL (T=0.30mm)
  - 5 1/4 INNER GROUND COVER SHELL: STAINLESS STEEL (T=0.10mm)
  - 6 1/5 MID PLATE: STAINLESS STEEL (T=0.15mm)
  - 7 2 ELECTRICAL CHARACTERISTICS:
    - 1 CONTACT RESISTANCE: 40mΩ Max FOR INITIAL, 10mΩ CHANGE AFTER TEST. MEASURE AT 20mV, 100mA.
    - 2 CONTACT CURRENT RATING: 5A FOR COLLECTIVELY AND POWER SUPPLY (PINK/PIN1, A4, A9, A12, B1, B4, B9, B12), 1.25A FOR COMMON PIN, 0.25A FOR OTHER SIGNAL PIN.
    - 3 2.3 DIELECTRIC WITHSTANDING VOLTAGE: 100V AC R.M.S.
    - 4 2.4 INSULATION RESISTANCE: 100MΩ Min
    - 5 2.5 OPERATING TEMPERATURE: -40°C ~ 85°C
  - 8 3 MECHANICAL CHARACTERISTICS:
    - 3.1 MATING FORCE: 5-20 N
    - 3.2 UNMATED FORCE: 8-20N INITIAL TEST; 6-20N DURABILITY AFTER TEST
    - 3.3 DURABILITY: 10,000 CYCLES
    - 4 PLATING:
      - 4.1 TERMINAL CONTACT: Au 3μ" PLATING ON CONTACT AREA, TIN 50μ" MIN. TIN ON SLIDER TAIL, 50μ" MIN. UNDERPLATING OVERALL
      - 4.2 SHELL: 50μ" MIN. NICKEL ALL OVER,
      - 4.3 MID PLATE: CLEAN

NO.	DESCRIPTION	MATERIAL	REMARKS
5	CAP	LCP 8075E UL94V-0	BLACK
4	SHELL	SUS304 T=0.40mm	NI 50μ" Min Plated
3	LATCH	SUS304 T=0.15mm	NO PLATED
2	CONTACT	CP28 T=0.12mm	0.3μ" RANGE ON CONTACT AREA, TIN 50μ" MIN. TIN ON SLIDER TAIL, 50μ" MIN. UNDERPLATING OVERALL
1	HOUSING	LCP UL94V-0	BLACK UL94V-0

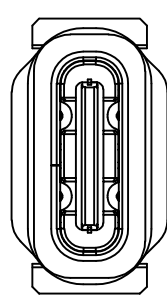
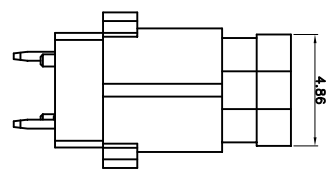
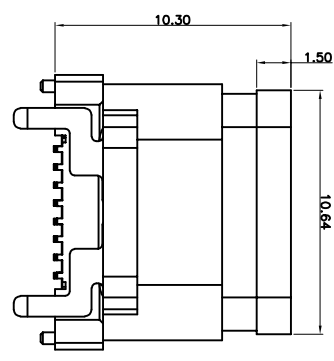
TOLERANCE		NAME (INTENDED USE)	
X.X ±0.30	X.X ±10°	CUSTOMER DRAWING	
XX ±0.20	X ±8°	PART NO.	TITLE:
.XXX ±0.10	.XX ±5°	FY23-012TC161F410-01	16P防水母座立贴10.0
UNITS	mm	DESIGN:	ZXM
MATERIAL	---	CHED:	---
FINISH	---	APPD:	---
DRAWG NO.		SCALE	
FY23-012TC161F410-01		1:1	
SHEET		REV.	
1/2		A	

Pin Name	Description	Pin Name	Description
A1 (GND)	Ground return	B12 (GND)	Ground return
A4 (Yes)	Bus Power	B9 (Yes)	Bus Power
A5 (CC)	Control	B8 (SR02)	Standard User(SBU)
A6 (Dn1)	Negative half of the USB 2.0 differential pair-Position 1	B7 (Dn2)	Negative half of the USB 2.0 differential pair-Position 1
A7 (Dn1)	USB 2.0 differential pair-Position 1	B6 (Dn2)	Positive half of the USB 2.0 differential pair-Position 2
A8 (SR0)	Standard User(SBU)	B5 (C2)	Configuration
A9 (Yes)	Bus Power	B4 (Yes)	Bus Power
A12 (GND)	Ground return	B1 (GND)	Ground return

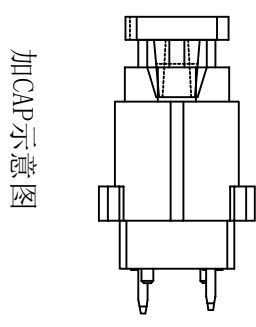


CUSTOMER

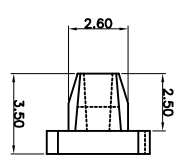
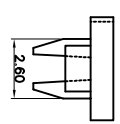
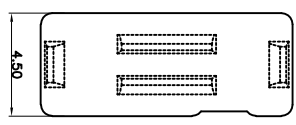
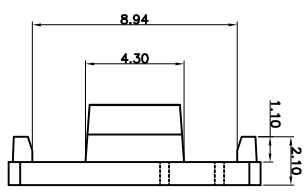
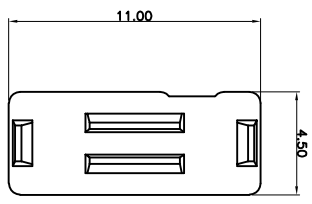
REV.	ECN NO.	DESCRIPTION	DATE	DESIGN



加防水圈示意图



加CAP示意图



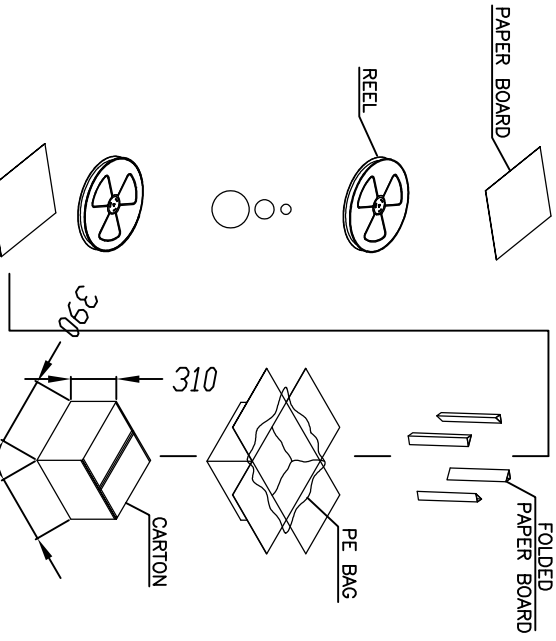
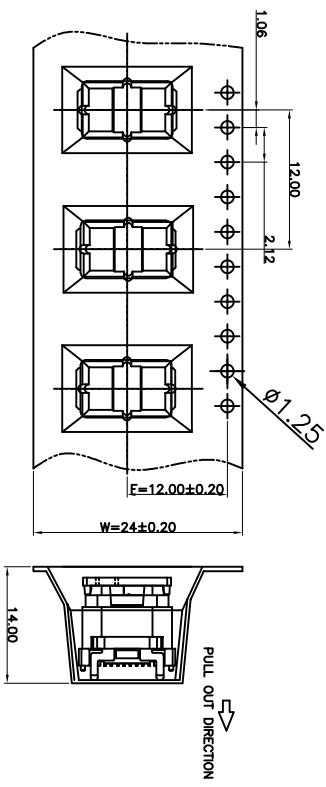
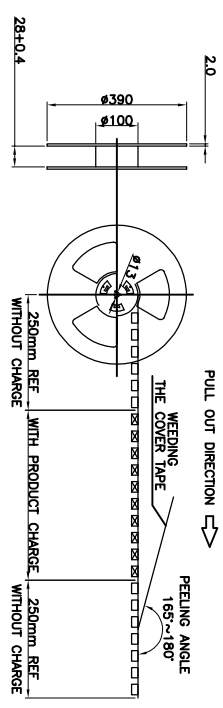
TOLERANCE		NAME(INTENDED USE)		DRAWG NO.	
X.X ±0.30	X.X ±10°	CUSTOMER DRAWING		FY23-012TC161F410-01	
.XX ±0.20	.X ±8°	PART NO.		TITLE: 16P防水母座立贴10.0	
.XXX ±0.10	.XX ±5°	DESIGN: ZXM		DRAWG NO. FY23-012TC161F410-01	
UNITS	mm	CHED:		SCALE	
MATERILA	---	APPD:		SHEET	
FINISH	---			REV.	
				A	

**FUYOU** 广东富盈兴业精密科技实业有限公司  
Guangdong FUYOU Precision Electronic Technology Co.,Ltd.

16P防水母座立贴10.0

SCALE 1:1 SHEET 1/2 REV. A

REV.	ECN NO.	DESCRIPTION	DATE	DESIGN



- 注意:
1. 材料:  
纸箱: 纤维板, 瓦楞, 双层壁。  
胶带: 聚苯乙烯, 耐热温度: 120°C, 白。  
卷筒: 聚苯乙烯, 耐热温度: 70°C, 蓝色。  
包装: 聚苯乙烯, 耐热温度: 100°C。
  2. 剥离强度: 0.1 ~ 1.3 N(10 ~ 130克)
  3. 剥离速度: 300mm /min。
  4. 每个袋子都应包括干燥剂\*2。
  5. 外箱上贴号物料标签及RHOS标签
  6. 同一产品只能装同一纸箱, 不允许其它产品;
  7. 包装后, 产品铆合面朝外; 柱子朝内;

600	10	6000	PCS
PCS/卷	卷/箱	箱	

TOLERANCE	NAME (INTENDED USE) CUSTOMER DRAWING	FY23-012TC161F410-01 16P防水母座立贴10.0	FY23-012TC161F410-01	SCALE	SHEET	REV.
X.X ±0.30 .XX ±0.20 .XXX ±0.10	X.X ±10' .X ±8' .XX ±5'					
UNITS	DESIGN: ZXM	DRAWG NO.				
MATERILA	CHED:					
FINISH	APPD:					

FUYOU 广东富盈兴业精密科技实业有限公司  
Guangdong FUYOU Precision Electronic Technology Co., Ltd.