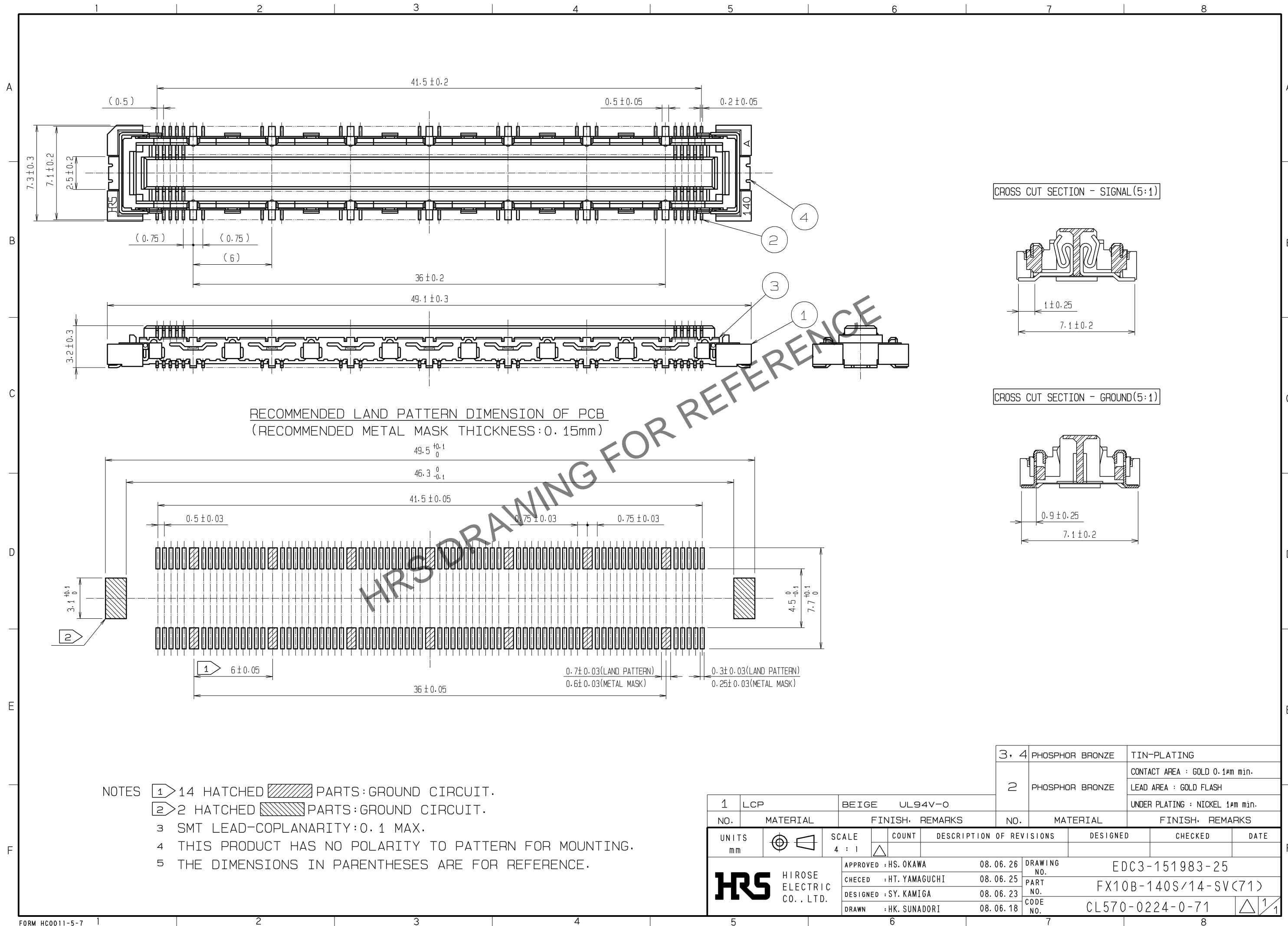


Jul.1.2024 Copyright 2024 HIROSE ELECTRIC CO., LTD. All Rights Reserved.  
 In case of consideration for using Automotive equipment / device which demand high reliability, kindly contact our sales window correspondents.



- NOTES
- ① 14 HATCHED PARTS: GROUND CIRCUIT.
  - ② 2 HATCHED PARTS: GROUND CIRCUIT.
  - ③ SMT LEAD-COPLANARITY: 0.1 MAX.
  - ④ THIS PRODUCT HAS NO POLARITY TO PATTERN FOR MOUNTING.
  - ⑤ THE DIMENSIONS IN PARENTHESES ARE FOR REFERENCE.

1	LCP	BEIGE	UL94V-0	3, 4	PHOSPHOR BRONZE	TIN-PLATING		
NO.	MATERIAL	FINISH	REMARKS	NO.	MATERIAL	FINISH		
				2	PHOSPHOR BRONZE	CONTACT AREA : GOLD 0.1µm min. LEAD AREA : GOLD FLASH UNDER PLATING : NICKEL 1µm min.		
UNITS		SCALE	COUNT	DESCRIPTION OF REVISIONS		DESIGNED	CHECKED	DATE
mm		4 : 1		APPROVED : HS. OKAWA	08.06.26	DRAWING NO.	EDC3-151983-25	
<b>HRS</b> HIROSE ELECTRIC CO., LTD.		CHECED : HT. YAMAGUCHI	08.06.25	PART NO.		FX10B-140S/14-SV(71)		
		DESIGNED : SY. KAMIGA	08.06.23	CODE NO.		CL570-0224-0-71		
		DRAWN : HK. SUNADORI	08.06.18					