



**HN / HN2 / BR2 / BD2 /
High voltage (BNC HT / SHV / MQ HT / THT 20) series**

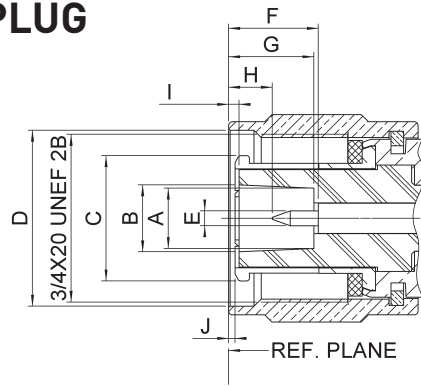
R176 / R616 / R605 / R606 / R316 / R317 / R321 / R331

RADIAL 
The next connexion

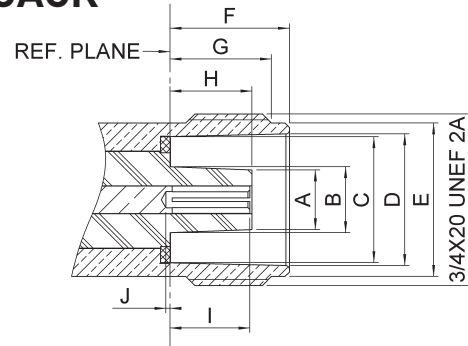
	Pages
HN	
Interface	15-4
Plugs	15-4
Jack	15-5
Receptacle	15-5
Adapter	15-5
Caps	15-6
Panel drilling	15-6
HN2	
Interface	15-6
Characteristics	15-7
Plug	15-7
Receptacle	15-7
Adapter	15-7
Panel drilling	15-7
BR2	
Interface	15-8
Characteristics	15-8
Plugs	15-9
Jacks	15-9
Receptacles	15-10
Caps	15-10
Gasket	15-11
Panel drilling	15-11
BD2	
Interface	15-12
Plug	15-12
Receptacle	15-12
Panel drilling	15-12
HIGH VOLTAGE	
Introduction	15-13
BNC HT	
Characteristics	15-13
Plugs	15-14
Jacks	15-14
Receptacles	15-14
Adapters	15-15
Cap	15-15
Gasket	15-15
SHV	
Characteristics	15-16
Plugs	15-17
Jacks	15-17
Receptacles	15-18
Adapter	15-18
Miniquick HT	
Characteristics	15-18
Plugs	15-19
Jacks	15-19
Receptacles	15-19
THT 20	
Characteristics	15-20
Plugs	15-21
Receptacles	15-21
Cap	15-21
Panel drilling	15-22

INTERFACE

PLUG



JACK



Letter	mm		inch	
	min.	max.	min.	max.
A DIA	6.7	6.8	.264	.268
B DIA	7.4	7.5	.291	.295
C DIA	13.85	13.95	.545	.549
D DIA	19.39	19.59	.763	.771
E DIA	1.62	1.66	.064	.065
F	9.3	10.1	.366	.398
G	9.2	9.7	.362	.382
H	3.9	5.3	.154	.209
I	0.15	0.55	.006	.022
J	-0.5	0.3	.020	.012

Letter	mm		inch	
	min.	max.	min.	max.
A DIA	6.55	6.65	.258	.262
B DIA	7.25	7.35	.285	.289
C DIA	13.91	14.01	.548	.552
D DIA	14.54	14.64	.572	.576
E DIA	16.91	17.01	.666	.670
F	13.2	13.25	.520	.522
G	11.1	11.35	.437	.447
H	8.75	9.25	.344	.364
I	8.55	9.15	.337	.360
J	-1.05	0.15	-.041	.006

PLUGS

STRAIGHT PLUGS CLAMP TYPE

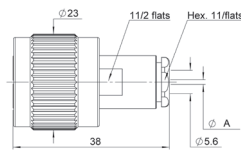


Fig. 1

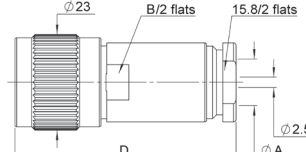


Fig. 2

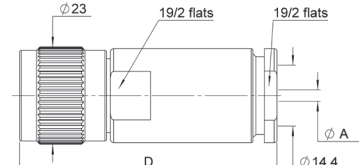


Fig. 3

Cable group	Cable group dia.	Part number	Fig	Dimensions mm			Note
				A	B	D	
RG58/RG141/RG142/RG223/RG400	5/50/S+D	R176 006 000	1	5.6			
RG59/RG62	6/75/S+93	R176 012 000		6.5			
RG213/RG393/RG214	10+11/50/S+D	R176 018 000	2	11.2	17	49	
		R176 019 000			15.8	56.5	
		R176 021 000			17	53	
	14/50	R176 027 000	3	2.5		63	
		R176 027 520		2.7		61	ceramic insulator silver plated

STRAIGHT JACK CLAMP TYPE

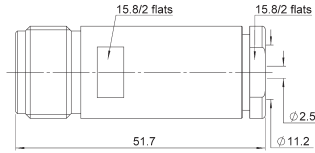


Fig. 1

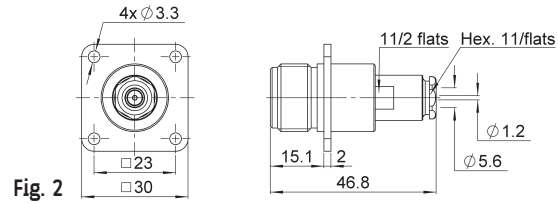


Fig. 2

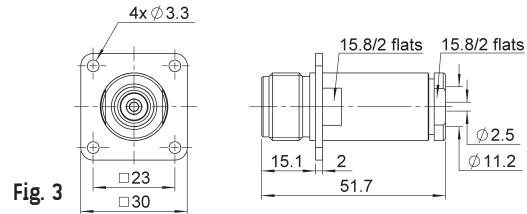
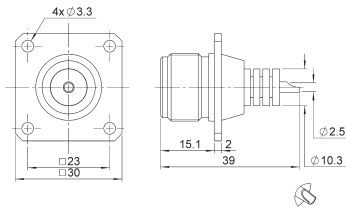


Fig. 3

Cable group	Cable group dia.	Part number	Fig	Panel drilling	Note
RG213/RG393/RG214	10+11/50	R176 218 000	1		
RG58/RG141/RG142/RG223/RG400	5/50/S+D	R176 256 000	2	P02	square flange
RG213/RG393/RG214	10+11/50	R176 268 000	3		

FLANGE RECEPTACLE



Part number	Panel drilling	Note
R176 404 000	P02	square flange - solder pot

IN SERIES ADAPTERS

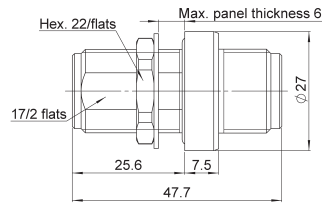


Fig. 1

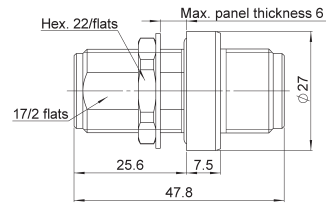


Fig. 2

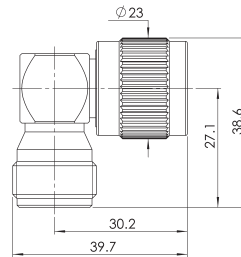


Fig. 3

Part number	Fig	Panel drilling	Note
R176 754 000	1	P01	bulkhead female-female - splashproof panel seal
R176 754 150	2		bulkhead female-female - splashproof panel seal - ceramic insulator
R176 770 000	3		right angle - male-female

To download data sheets and assembly instructions, visit www.radiall.com & enter the part number in the Search box.
Bold part numbers represent products typically in stock & available for immediate shipment.
 See page 8 and 9 for packaging information.

CAPS

CAPS

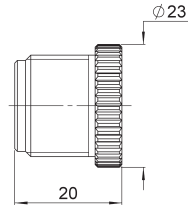


Fig. 1

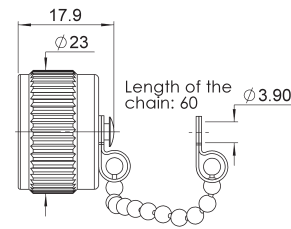


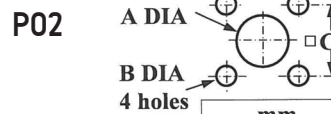
Fig. 2

Part number	Fig	Note
R176 830 010	1	protective cap
R176 811 000	2	protective cap with chain

PANEL DRILLING



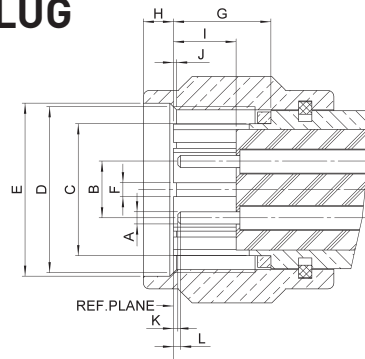
	mm	
	Maxi	mini
A	19.3	19.2
B	17.3	17.2



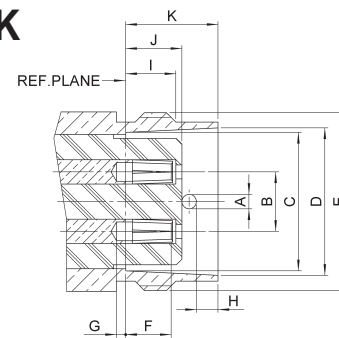
	mm	
	Maxi	mini
A	19.5	19.4
B	3.5	3.4
C	23.1	23

INTERFACE HN2

PLUG



JACK



Letter	mm		inch	
	min.	max.	min.	max.
A DIA	1.31	1.37	0.052	0.054
B	6.3	6.4	0.248	0.252
C DIA	15.0	15.15	0.591	0.596
D	3/4X20 UNEF 2B		3/4X20 UNEF 2B	
E DIA	19.4	19.6	0.764	0.772
F	1.57	1.62	0.062	0.064
G	11	11.2	0.433	0.441
H	3.0	3.75	0.118	0.148
I	6.2	6.45	0.244	0.254
J	-0.55	0.5	-0.022	0.02
K	-0.28	0.725	0.011	0.029
L	0.125	1.31	0.005	0.052

Letter	mm		inch	
	min.	max.	min.	max.
A DIA	1.47	1.55	0.058	0.061
B DIA	6.3	6.4	0.248	0.252
C DIA	14.75	14.85	0.581	0.585
D DIA	15.65	15.85	0.616	0.624
E	3/4X20 UNEF 2A		3/4X20 UNEF 2A	
F	4.65	5.8	0.183	0.228
G	0.75	1.75	0.03	0.069
H	2.275	2.46	0.09	0.097
I	4.21	4.51	0.166	0.178
J	5.95	6.3	0.234	0.248
K	9.81	9.91	0.386	0.39

ELECTRICAL CHARACTERISTICS

Frequency range	DC to 500 MHz
Impedance	95Ω
Test voltage at sea level	500 V peak
Insulation resistance	> 5000 MΩ

MECHANICAL CHARACTERISTICS

Life	500 matings
Vibration	1/2 sinusoidal (severity 100 A)

ENVIRONMENTAL

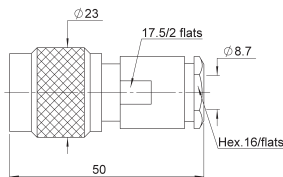
Temperature range	-50°C + 125°C
Salt spray	48 Hrs

MATERIALS

Contacts and interfaces	Heat treated beryllium copper
Other pieces	Brass
Insulator	Rexolite
Gasket	Silicone rubber

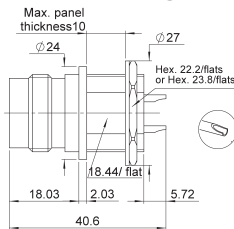
PLUG, RECEPTACLE AND ADAPTER

STRAIGHT PLUG CLAMP TYPE



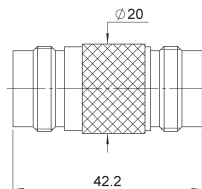
Cable group dia.	Part number	Note
twiaxial 8	R616 008 000	Belden P/N Y 15662 IBM P/N 7362211

BULKHEAD RECEPTACLE, SOLDER POT



Part number	Panel drilling
R616 549 000	P01

IN SERIES ADAPTER



Part number	Note
R616 705 000	female - female

P01

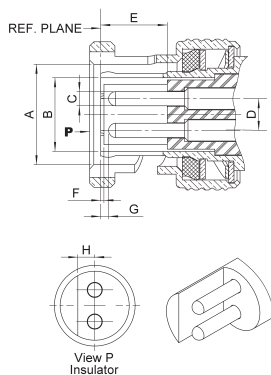
mm		
	Maxi	mini
A	19.33	19.2
B	18.64	18.44

PANEL DRILLING

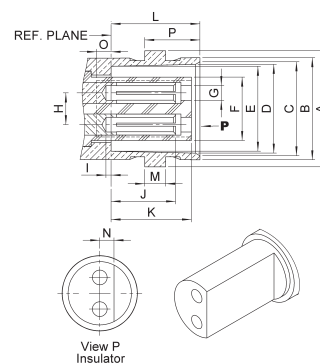
To download data sheets and assembly instructions, visit www.radiall.com & enter the part number in the Search box.
Bold part numbers represent products typically in stock & available for immediate shipment.
 See page 8 and 9 for packaging information.

INTERFACE

PLUG



JACK



Letter	mm		inch	
	min.	max.	min.	max.
A DIA	9.78	9.91	.385	.390
B DIA	6.70	6.77	.264	.267
C DIA	1.31	1.36	.052	.054
D	2.95	3.05	.116	.120
E	7.6	7.9	.299	.311
F	-0.05	0.15	.002	.006
G	0.85	1.55	.033	.061
H	1.55	1.65	.061	.065

Letter	mm		inch	
	min.	max.	min.	max.
A DIA	10.93	11.09	.430	.437
B DIA	9.60	9.70	.378	.382
C DIA	8.79	9.04	.346	.356
D DIA	8.31	8.46	.327	.333
E DIA	8.09	8.15	.319	.321
F DIA	5.9	6.0	.232	.236
G DIA	1.4	1.45	.055	.057
H	2.95	3.05	.116	.120
I	-0.1	0.8	-.004	.031
J	5.3	5.7	.209	.224
K	7.05	7.35	.278	.289
L	8.36	8.46	.327	.335
M	1.91	2.06	.075	.081
N	1.45	1.55	.057	.061
O	0.35	0.85	.014	.033

CHARACTERISTICS

Bayonet lock coupling with polarisation

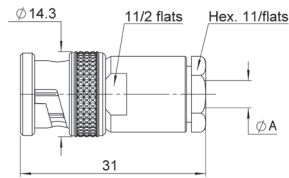
ELECTRICAL AND ENVIRONMENTAL CHARACTERISTICS

Dielectric withstanding voltage	between pins between pins and body	1500 volts RMS, 50 Hz
Maximum intensity		3.5 Amp
Insulation resistance	between pins between pins and body	> 10 ⁵ MΩ
Contact resistance		< 1 mΩ at 1 Amp
Capacity at 1 MHz	between pins between pins and body	< 1.3 pF < 3.2 pF
Frequency range		DC - 0.5 GHz
Temperature range		-40 +100° C

MATERIALS

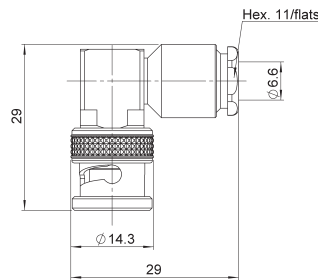
All metal parts under stress	Beryllium copper
Other metal parts	Brass
Insulators	Polyamide and diallyphtalate
Gaskets	Neoprene

STRAIGHT PLUGS FOR ARMOUR TWINAXIAL CABLE



Cable group dia	Part number	Dimensions (mm) A
twinaxial 4	R605 004 000	4.6
twinaxial 5	R605 005 000	5.6
twinaxial 6	R605 006 000	6.6

RIGHT ANGLE PLUG



Cable group dia	Part number
twinaxial 6	R605 156 000

STRAIGHT JACKS

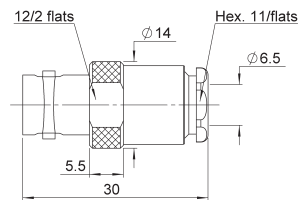


Fig. 1

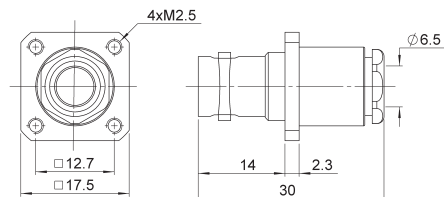


Fig. 2

Cable group dia	Part number	Fig	Panel drilling	Note
twinaxial 6	R605 206 000	1	P01	square flange
	R605 256 000	2		

To download data sheets and assembly instructions, visit www.radiall.com & enter the part number in the Search box.
Bold part numbers represent products typically in stock & available for immediate shipment.
 See page 8 and 9 for packaging information.

RECEPTACLES AND CAPS

RECEPTACLES

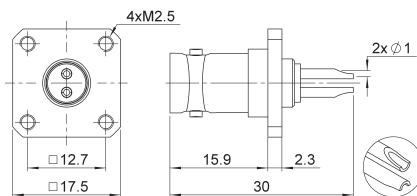


Fig. 1

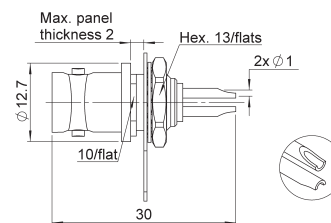


Fig. 2

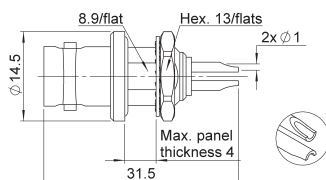


Fig. 3

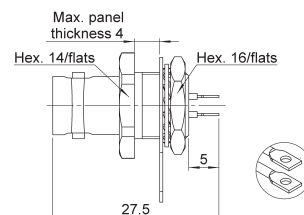
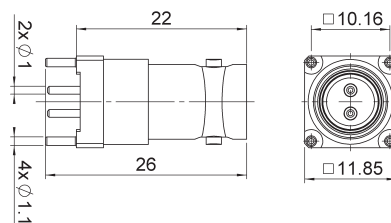


Fig. 4

Part number	Fig	Panel drilling	Note
R605 400 000	1	P02	Square flange
R605 550 000	2	P04	Rear fixing
R605 550 020			Front mounting
R605 600 000	3	P05	Waterproof
R605 610 000	4	P06	Hermetically sealed glass - seal

PCB RECEPTACLES



Part number	Panel drilling
R605 440 000	P03

CAPS

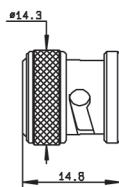


Fig. 1

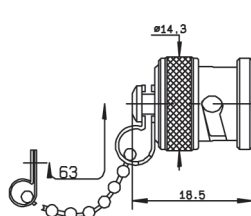


Fig. 2

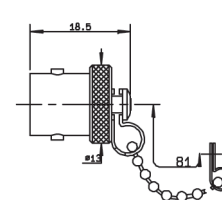
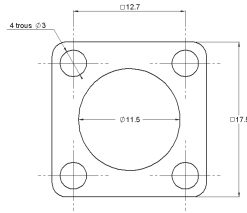


Fig. 3

Part number	Fig.	Note
R141 802 000	1	Male
R141 812 000	2	Male with chain
R141 842 000	3	Female with chain

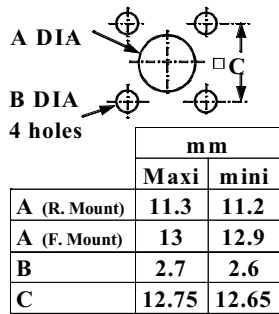
GASKET



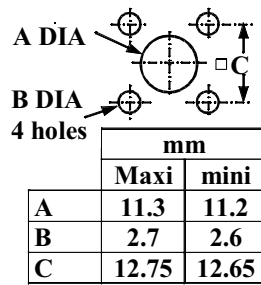
Part number
R280 503 000

PANEL DRILLING

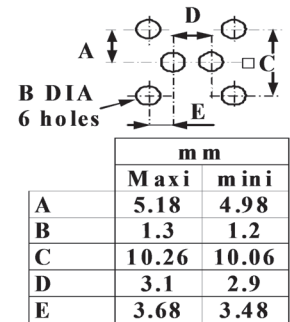
P01



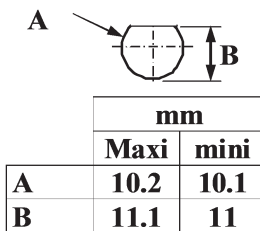
P02



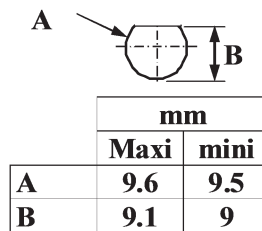
P03



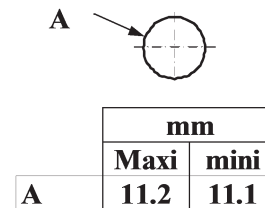
P04



P05



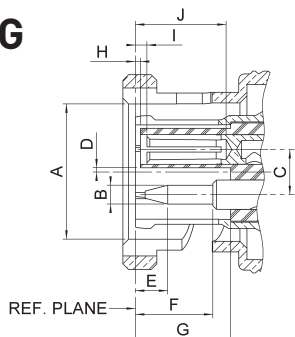
P06



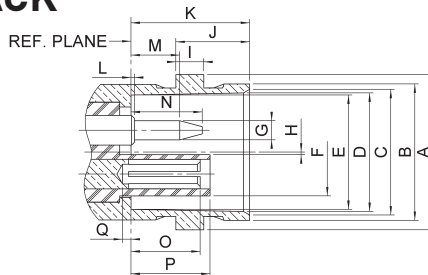
To download data sheets and assembly instructions, visit www.radiall.com & enter the part number in the Search box.
Bold part numbers represent products typically in stock & available for immediate shipment.
 See page 8 and 9 for packaging information.

INTERFACE

PLUG



JACK

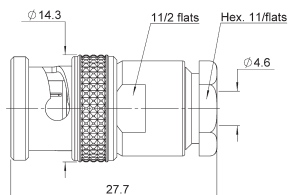


Letter	mm		inch	
	min.	max.	min.	max.
A DIA	9.78	9.91	.385	.390
B DIA	1.32	1.37	.052	.054
C	3.05	3.15	.120	.124
D	0.05	---	.002	---
E	1.95	2.95	.077	.116
F	6.45	6.95	.254	.274
G	5.35	6.15	.211	.242
H	0.15	---	.006	---
I	0.7	1.3	.028	.051
J	5.9	7	.232	.276

Letter	mm		inch	
	min.	max.	min.	max.
A DIA	10.93	11.09	.430	.437
B DIA	9.60	9.70	.378	.382
C DIA	8.79	9.04	.346	.356
D DIA	8.31	8.46	.327	.333
E DIA	8.09	8.15	.319	.321
F DIA	---	6.25	---	.246
G DIA	1.32	1.37	.052	.054
H	0.05	---	.002	---
I	1.91	2.07	.075	.081
J	5.18	5.28	.204	.208
K	8.31	8.51	.327	.335
L	-0.05	0.55	-.002	.022
M	2.95	3.95	.116	.156
N	4.55	5.55	.179	.219
O	4.6	5.2	.181	.206
P	5.45	5.75	.215	.226
Q	0.495	0.605	.019	.024

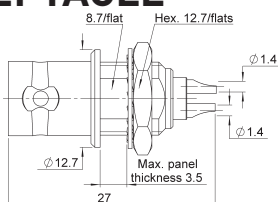
PLUG AND RECEPTACLE

STRAIGHT PLUG



Cable group dia	Part number
4 mm	R606 004 000

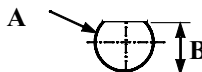
BULKHEAD RECEPTACLE



Part number	Panel drilling
R606 550 000	P01

PANEL DRILLING

P01



	mm	
	Maxi	mini
A	9.7	9.6
B	8.9	8.8

This catalogue features 4 series of high voltage coaxial connectors, able to withstanding continuous voltages up to 20 000 V.

TEST VOLTAGES

The test voltages quoted in this catalogue are indicative only. They correspond to those made under normal atmospheric conditions during a test period of 1 minute as specified in the French standard NF EN 60068 - 1.

OPERATING VOLTAGES

The operating voltage is chosen under the responsibility of users, depending on the conditions in which the connectors will be used (environmental, safety factor...). The indicated cables are recommended for the mechanical and dimensional suitability with our connectors. As to the electrical characteristics of the cables and in particularly the maximum voltage capacity, it is necessary to conform with the recommendation of the cable manufacturer.

CHARACTERISTICS BNC HT

The connectors of this series are not intermateable with those of the BNC and SHV series.

ELECTRICAL CHARACTERISTICS

Frequency range	DC - 2 GHz	
Impedance	50Ω	
VSWR (plug and jack)	1.20 + 0.2 F (GHz)	
Test voltage	unmated (male) connectors (female)	6 000 V D.C.
		8 000 V D.C.
	mated pair	10 000 V D.C.
Current rating	10 A	

MECHANICAL AND ENVIRONMENTAL CHARACTERISTICS

Mating cycles	500
Vibration	20 g - 2 000 Hz
Shock	50 g
Salt spray	48 H
Temperature range	- 55°C + 155°C - 40°C + 70°C (with polyethylene insulator)

MATERIALS AND PLATING

Components	Materials	Platings
Body	Brass	Nickel
Center contact	Brass / Beryllium copper	Silver
Other metal parts	Brass or Beryllium copper	Nickel
Insulator	PTFE / Polyethylene	
Gasket	Silicone rubber	

All dimensions are given in mm

PLUGS, JACKS AND RECEPTACLES

STRAIGHT PLUGS FOR FLEXIBLE CABLES

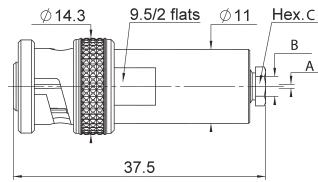


Fig. 1

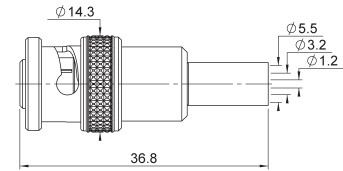


Fig. 2

Cable group	Cable group dia.	Part number	Fig.	Dimensions			Note
				A dia.	B dia.	Hex. C	
RG174/RG316/RD316/RG179/RD179	2.6/50+75/S + D	R316 004 000	1	0.6	3	5/flats	Clamp type
RG58/RG141/RG142/RG223/RG400	5/50/S + D	R316 007 000	1	1.2	5.6	9.5/flats	
RG59/RG62	6/75/S	R316 011 000	1	1.2	6.5	9.5/flats	Crimp type
RG58/RG141	5/50/S	R316 072 000	2				

STRAIGHT JACKS CLAMP TYPE FOR FLEXIBLE CABLES

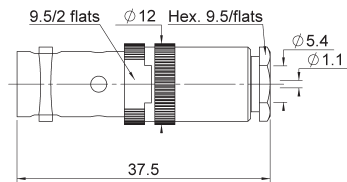


Fig. 1

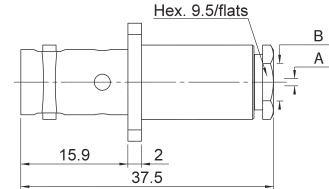


Fig. 2

Cable group	Cable group dia.	Part number	Fig.	Dimensions		Panel Drilling
				A dia.	B dia.	
RG58/RG141/RG142/RG223/RG400	5/50/S + D	R316 207 000	1			P01
		R316 257 000	2	1.1	5.4	
RG59/RG62	6/75/S	R316 261 000			6.5	

RECEPTACLES

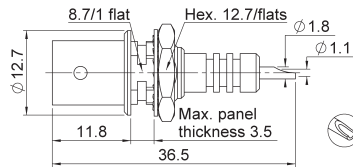


Fig. 1

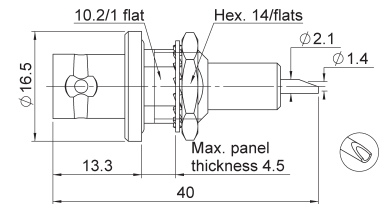


Fig. 2

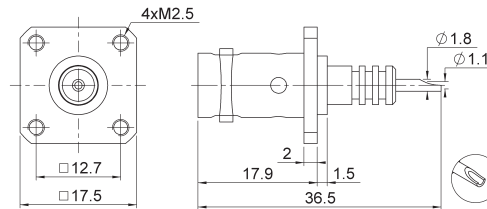


Fig. 3

Part number	Fig.	Panel Drilling	Note
R316 553 000	1	P02	Bulkhead
R316 603 000	2	P03	Bulkhead panel seal
R316 405 000	3	P01	Square flange mounting

IN SERIES ADAPTERS

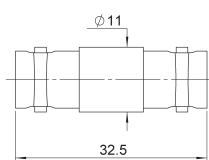


Fig. 1

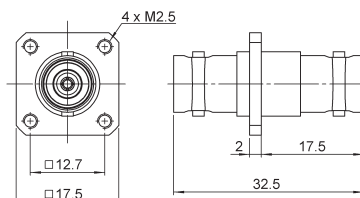


Fig. 2

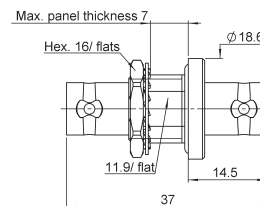


Fig. 3

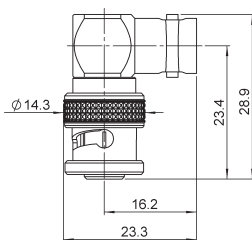


Fig. 4

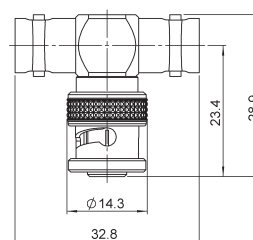
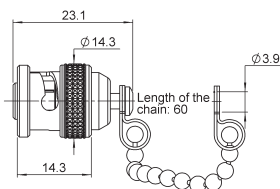


Fig. 5

Part number	Fig.	Panel Drilling	Note
R316 704 000	1		Straight female - female
R316 714 000	2	P01	Square flange female - female
R316 754 000	3	P04	Straight bulkhead female - female with panel seal
R316 770 000	4		Right angle male - female polyethylene insulator
R316 780 000	5		Tee female female - male polyethylene insulator

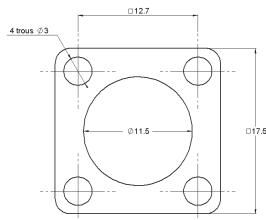
CAP



Part number

R316 812 000

GASKET



Part number

R280 503 000

CHARACTERISTICS

These safe high voltage connectors meet all requirements of the NIM Standard (Nuclear Instrumentation Module) Specification ND 545 Amendment A. Both the pin and socket contacts are securely recessed inside the insulation to prevent the danger of electrical shock when live unmated connectors are handled.

They are particularly recommended for impulse circuits of linear accelerators as well as in military, nuclear and medical electronics.

These connectors are not intermateable with those of the BNC and BNC.HT series.

ELECTRICAL CHARACTERISTICS

Frequency range		DC - 2 GHz
Impedance		50Ω
VSWR (plug and jack)		< 1.20 + 0.3 F (GHz)
Contact resistance	center contact	< 2.1 mΩ
	outer contact	< 1.5 mΩ
Test voltage	unmated connectors	10 000 V D.C. - 1 mΩ
	mated pair	12 000 V D.C. - 1 mΩ
Current rating		10 A

MECHANICAL AND ENVIRONMENTAL CHARACTERISTICS

Temperature range		- 65°C + 165°C
Mating cycles		500
Vibration		10 g - 500 Hz to MIL-STD-202, method 204, condition A
Shock		to MIL-STD-202, method 213 B, condition A
Salt spray		to MIL-STD-202, method 101, condition B-48 H
Contact to cable retention force		> 27 N
Coupling nut retention force		> 450 N
Cable retention		> 180 N

MATERIALS AND PLATING

Components	Materials	Plating
Body	Brass	Nickel
Center contact	Brass / Beryllium copper	Gold
Other metal part	Brass / Beryllium copper	Nickel
Insulator	PTFE	
Gasket	Silicone rubber	

All dimensions are given in mm

STRAIGHT PLUGS FOR FLEXIBLE CABLES

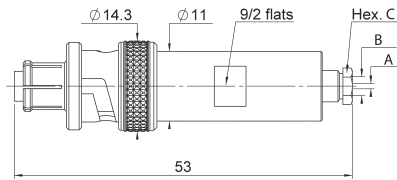


Fig. 1

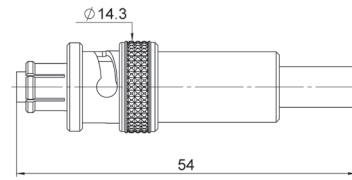


Fig. 2

Cable group	Cable group dia.	Part number	Fig.	Dimensions			Captive center contact	Note
				A dia.	B dia.	Hex. C		
RG58/RG141/RG142 RG223/RG400	5/50/S + D	R317 005 000	1	1.05	5.6	9.5/flats	Yes	Clamp type
RG58/RG141	5/50/S	R317 072 000	2					Crimp type
RG59/RG62	6/75/S	R317 074 000						

STRAIGHT JACKS FOR FLEXIBLE CABLES

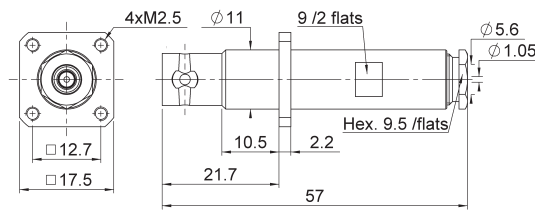
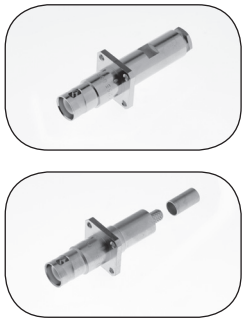


Fig. 1

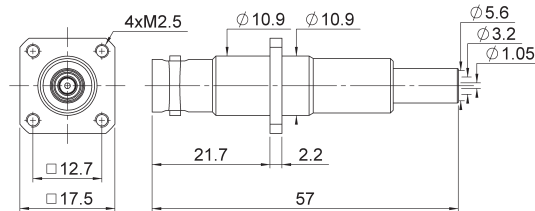


Fig. 2

Cable group	Cable group dia.	Part number	Fig.	Panel Drilling	Captive center contact	Note
RG58/RG141/RG142 RG223/RG400	5/50/S + D	R317 255 000	1	P01	Yes	Square flange clamp type
RG58/RG141	5/50/S	R317 270 000	2		Square flange crimp type	

To download data sheets and assembly instructions, visit www.radiall.com & enter the part number in the Search box.
Bold part numbers represent products typically in stock & available for immediate shipment.
 See page 8 and 9 for packaging information.

RECEPTACLES AND ADAPTER

RECEPTACLES

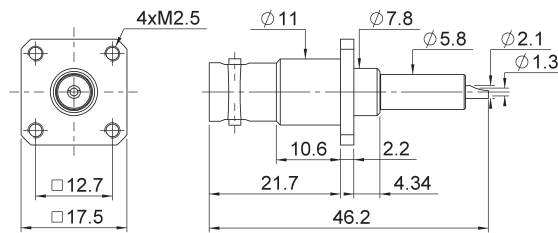
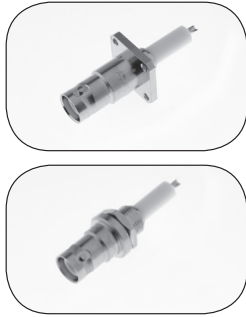


Fig. 1

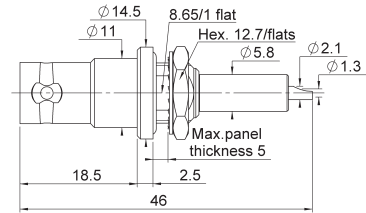
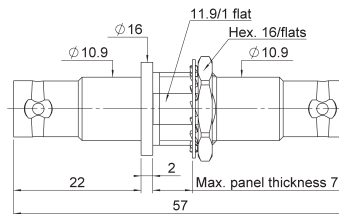


Fig. 2

Part number	Fig.	Panel Drilling	Note
R317 405 000	1	P05	Square flange
R317 580 000	2	P06	Bulkhead

IN SERIES ADAPTER



Part number	Panel Drilling	Note
R317 720 000	P04	Bulkhead jack - jack

CHARACTERISTICS MiniQUICK HT

Snap-on connection with a positive locking system for secure connection.

ELECTRICAL CHARACTERISTICS

Frequency range	DC - 2 GHz
Impedance	50 Ω
VSWR (plug and jack)	< 1.20 + 0.3 F (GHz)
Test voltage	7 000 V D.C.
unmated connectors	12 000 V D.C.
mated pair	
Threshold of corona discharge	4 500 V r.m.s. - 50 Hz (LCIE certificate N° 137656C)
Current rating	10 A

MECHANICAL AND ENVIRONMENTAL CHARACTERISTICS

Temperature range	- 40°C + 100°C
Mating cycles	1 000
Vibration	20 g - 2000 Hz
Shock	50 g
Salt spray	48 H

MATERIALS AND PLATING

Components	Materials	Plating
Body	Brass	Nickel chrome
Center contact	Beryllium copper	Gold / Silver
Other metal part	Beryllium copper	Nickel
Insulator	PTFE	
Gasket	Silicone rubber	

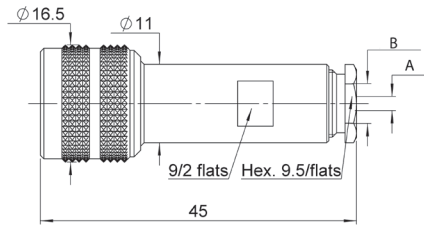
All dimensions are given in mm

To download data sheets and assembly instructions, visit www.radiall.com & enter the part number in the Search box.
Bold part numbers represent products typically in stock & available for immediate shipment.
 See page 8 and 9 for packaging information.

PLUGS, JACKS AND RECEPTACLES

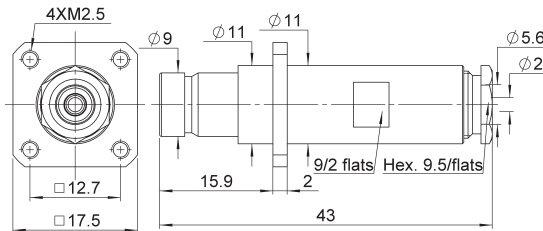
MiniQUICK HT

STRAIGHT PLUGS, CLAMP TYPE FOR FLEXIBLE CABLES



Cable group	Cable group dia.	Part number	Dimensions	
			A	B
RG58/RG141/RG142/RG223/RG400	5/50/S + D	R321 007 000	2	5.6
RG59/RG62	6/75/S	R321 011 000	12	6.5

STRAIGHT JACK, CLAMP TYPE FOR FLEXIBLE CABLES



Cable group	Cable group dia.	Part number	Panel drilling	Note
RG58/RG141/RG142/RG223/RG400	5/50/S + D	R321 257 000	P01	Square flange

RECEPTACLES

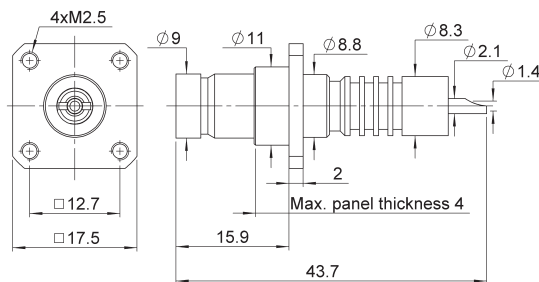


Fig. 1

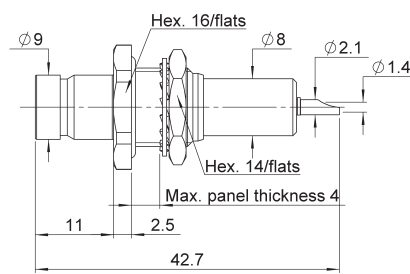


Fig. 2

Part number	Fig.	Panel drilling	Note
R321 405 000	1	P07	Square flange
R321 603 000	2	P08	Bulkhead panel seal

To download data sheets and assembly instructions, visit www.radiall.com & enter the part number in the Search box.
Bold part numbers represent products typically in stock & available for immediate shipment.
 See page 8 and 9 for packaging information.

CHARACTERISTICS

Screw coupling.

Female center contact has a 4 mm internal dia. which allows testing with standard banana plugs.

ELECTRICAL CHARACTERISTICS

Frequency range	DC - 1 GHz	
Impedance	50Ω	
Test Voltage	unmated connectors	10 000 V D.C.
	mated pair	20 000 V D.C.
Current rating	20 A	

MECHANICAL AND ENVIRONMENTAL CHARACTERISTICS

Temperature range	- 40°C + 70°C (polyethylene or styramic insulators) -55°C + 125°C (PTFE insulator)
Mating cycles	500
Salt spray	48 H

MATERIALS AND PLATING

Components	Materials	Plating
Body	Brass	Nickel
Center contact	Brass / Beryllium copper	Gold / Silver
Other metal part	Brass	Nickel
Insulator	PTFE / Polyethylene	
Gasket	Silicone rubber	

All dimensions are given in mm

STRAIGHT PLUGS, CLAMP TYPE FOR FLEXIBLE CABLES

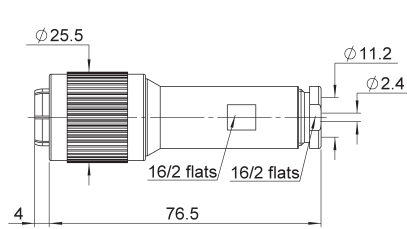


Fig. 1

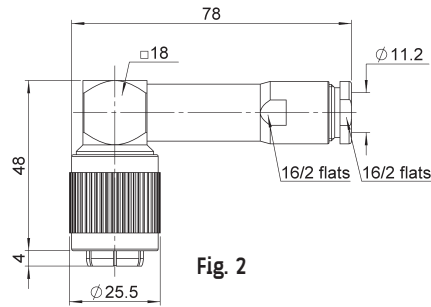


Fig. 2

Cable group	Cable group dia.	Part number	Fig.	Note
RG213/RG393/RG214	10/50+75/S + D + 11/50+75/D	R331 018 000	1	Straight/PE insulator
RG11/RG12/RG144/RG216		R331 168 000	2	Right angle

RECEPTACLES

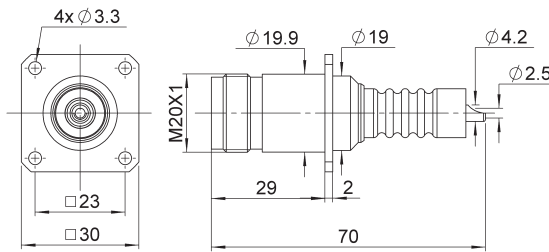


Fig. 1

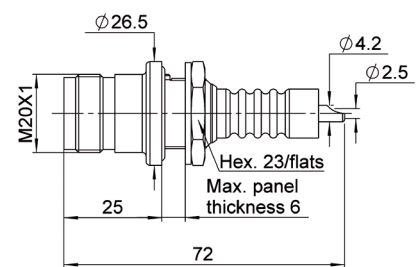
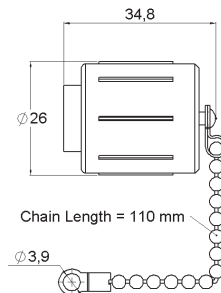


Fig. 2

Part number	Fig.	Panel drilling	Note
R331 405 000	1	P09	Square flange - PTFE insulator
R331 603 000	2	P10	Bulkhead, panel seal PTFE insulator

CAP

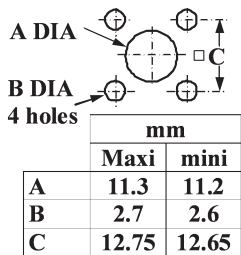


Part number	Note
R331 803 000	For THT 20 female connectors. The body of this cap is entirely made of styramic plastic.

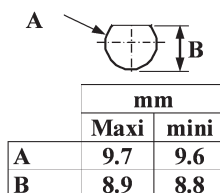
To download data sheets and assembly instructions, visit www.radiall.com & enter the part number in the Search box.
Bold part numbers represent products typically in stock & available for immediate shipment.
 See page 8 and 9 for packaging information.

PANEL DRILLING

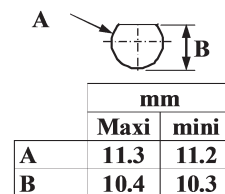
P01



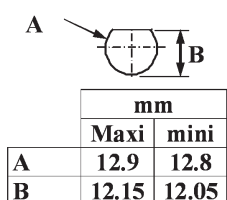
P02



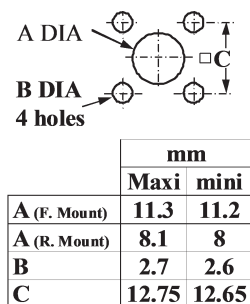
P03



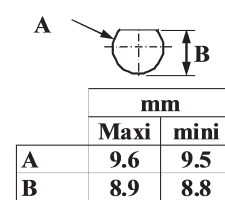
P04



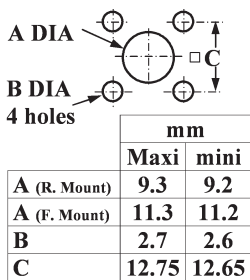
P05



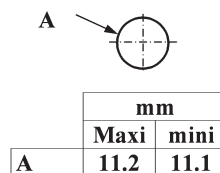
P06



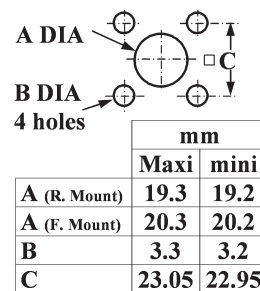
P07



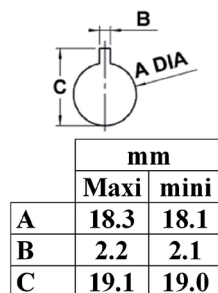
P08



P09



P10



Cable designation	Cable Group Ø / Ω	Imp. Ω	Cable dimensions mm (inch)					Radiall cable if applicable		
			Core type	Core Ø	Insulator Ø	Screen	Outer Ø	P/N	Remark	
RG 174 A/U	2.6 / 50 S	50	7 x 0.16	0.48 (.019)	1.52 (.060)	S	2.79 (.110)	C291 150 000	PVC jacket	
RG 178 B/U	2 / 50 S	50	7 x 0.1	0.30 (.012)	0.84 (.033)	S	1.78 (.070)	C291 145 007	FEP jacket	
RG 178 B/U	2 / 50 S	50	7 x 0.1	0.30 (.012)	0.84 (.033)	S	1.83 (.072)	C291 145 060	PVC jacket	
RG178nonm.	2 / 50 S	50	7 x 0.1	0.29 (.011)	0.84 (.033)	S	1.80 (.071)	C291 140 087	non magnetic / FEP jacket	
RG 179 B/U	2.6 / 75 S	75	7 x 0.1	0.30 (.012)	1.60 (.063)	S	2.54 (.010)	C291 210 007	FEP jacket	
RG 187 A/U	2.6 / 75 S	75	7 x 0.1	0.30 (.012)	1.60 (.063)	S	2.79 (.110)	C291 211 006	PTFE jacket	
RG 188 A/U	2.6 / 50 S	50	7 x 0.17	0.51 (.020)	1.52 (.060)	S	2.79 (.110)	C291 160 006	PTFE jacket	
RG 196 A/U	2 / 50 S	50	7 x 0.1	0.30 (.012)	0.86 (.034)	S	2.03 (.080)	C291 110 006	PTFE jacket	
RG 212 /U	8 / 50 D	50	solid	1.41 (.056)	4.70 (.185)	D	8.43 (.331)	na		
RG 213 /U	10 / 50 S	50	7 x 0.75	2.26 (.089)	7.24 (.285)	S	10.30 (.406)	C291 510 000	PVC jacket	
RG 214 /U	11 / 50 D	50	7 x 0.75	2.25 (.089)	7.24 (.285)	D	10.80 (.425)	C291 600 000	PVC jacket	
RG 215	10 / 50 S	50	7 x 0.75	2.25 (.089)	7.25 (.285)	S	10.29 (.405)	na		
RG 216 /U	11 / 75 D	75	7 x 0.4	1.21 (.048)	7.24 (.285)	D	10.80 (.425)	C291 610 000	PVC jacket	
RG 217 /U	14 / 50 D	50	solid	2.69 (.106)	9.40 (.370)	D	13.84 (.545)	C291 620 000	PVC jacket	
RG 218 /U	22 / 50 S	50	solid	4.95 (.195)	17.27 (.680)	S	22.10 (.870)	C291 630 000	PVC jacket	
RG 223 /U	5 / 50 D	50	solid	0.89 (.035)	2.95 (.116)	D	5.38 (.212)	C291 330 000	PVC jacket	
RG 225 /U	11 / 50 D	50	7 x 0.8	2.38 (.094)	7.24 (.285)	D	10.90 (.429)	C291 605 007	glass fiber jacket	
RG 303 /U	5 / 50 S	50	solid	0.94 (.037)	2.95 (.116)	S	4.32 (.170)	na		
RG 316 /U	2.6 / 50 S	50	7 x 0.17	0.53 (.021)	1.52 (.060)	S	2.49 (.098)	C291 170 007	FEP jacket	
RD 316	2.6 / 50 D	50	7 x 0.17	0.53 (.021)	1.52 (.060)	D	2.80 (.110)	C291 185 067	FEP jacket	
RG 393	10 / 50 D	50	7 x 0.81	2.39 (.094)	7.24 (.285)	D	9.91 (.390)	C291 511 007	FEP jacket	
RG 400	5 / 50 / D	50	19 x 0.19	0.98 (.039)	2.95 (.116)	D	4.95 (.195)	C291 324 007	FEP jacket	
Flexible cable BT approved										
RD 179	2.6 / 75 D	75	7 x 0.10	0.30 (.012)	1.6 (.063)	D	3.07 (.121)	C291 230 080	LSOH jacket	
BT 3002	3.6 / 75 D	75	solid	0.31 (.012)	1.95 (.077)	D	3.55 (.140)	C291 246 046	FEP jacket	
BT 2002	5 / 75 D	75	7 x 0.20	0.60 (.024)	2.5 (.098)	D	5.1 (.200)	C291 333 080	FEP jacket	
Semi rigid cables MIL-C-17 standard										
RG 401 /U	.250"	50	solid	1.63 (.064)	5.31 (.209)	--	6.35 (.250)	C291 870 001	copper tubing	
RG 401 alu	.250"	50	solid	1.63 (.064)	5.31 (.209)	--	6.35 (.250)	C291 874 187	tinned alu tubing	
RG 402 /U	.141"	50	solid	0.92 (.036)	2.98 (.117)	--	3.58 (.141)	C291 860 001	copper tubing	
RG 402 tin	.141"	50	solid	0.92 (.036)	2.98 (.117)	--	3.58 (.141)	C291 862 005	tinned copper tubing	
RG402silver	.141"	50	solid	0.92 (.036)	2.98 (.117)	--	3.58 (.141)	C291 861 066	silvered copper tubing	
RG 402 alu	.141"	50	solid	0.92 (.036)	2.98 (.117)	--	3.58 (.141)	C291 864 187	tinned alu tubing	
RG402nonm.	.141"	50	solid	0.92 (.036)	2.98 (.117)	--	3.58 (.141)	C291 861 061	non magnetic / copper tubing	
RG 405 /U	.085"	50	solid	0.51 (.020)	1.68 (.066)	--	2.20 (.087)	C291 850 001	copper tubing	
RG 405 tin	.085"	50	solid	0.51 (.020)	1.68 (.066)	--	2.20 (.087)	C291 850 005	tinned copper tubing	
RG 405 alu	.085"	50	solid	0.51 (.020)	1.68 (.066)	--	2.20 (.087)	C291 844 187	tinned alu tubing	
RG405nonm.	.085"	50	solid	0.51 (.020)	1.68 (.066)	--	2.20 (.087)	C291 851 001	non magnetic / copper tubing	
.047"	.047"	50	solid	0.29 (.011)	0.94 (.037)	--	1.19 (.047)	C291 855 001	copper tubing	
.047" tin	.047"	50	solid	0.29 (.011)	0.94 (.037)	--	1.19 (.047)	C291 855 065	tinned copper tubing	
Hand-formable cable										
Hand-formable	.085"	50	solid	0.51 (.020)	1.63 (.064)	--	2.21 (.087)	C291 844 065	tin soaked braid	
Hand-formable	.141"	50	solid	0.92 (.036)	2.95 (.116)	--	3.50 (.138)	C291 864 065	tin soaked braid	
Hand-formable	.141"	50	solid	0.92 (.036)	2.98 (.117)	--	4.05 (.159)	C291 866 378	FEP jacket	
Hand-formable	.141"	50	solid	0.92 (.036)	2.98 (.117)	--	4.50 (.177)	C291 866 270	LSZH jacket	
Corrugated cables (with helical or ringed/annular copper tube)										
Flexible	1/4"	50	solid	2.38 (.094)	6.40 (.252)	--	8.70 (.343)	na	ringed/annular tube	
Flexible	1/2"	50	solid	4.80 (.189)	11.6 (.457)	--	16.35 (.644)	C291 972 085	ringed/annular tube	
Flexible	7/8"	50	solid	9.13 (.359)	22.5 (.866)	--	27.7 (1.091)	na	ringed/annular tube	
Flexible	1 1/4"	50	solid	12.7 (.500)	32.5 (1.28)	--	39.5 (1.55)	na	ringed/annular tube	
Flexible	1 5/8"	50	solid	17.3 (.681)	43.5 (1.71)	--	50.5 (1.99)	na	ringed/annular tube	
Super flexible	1/4"	50	solid	1.90 (.075)	4.70 (.185)	--	7.40 (.291)	C291 993 080	helical tube	
Super flexible	3/8"	50	solid	2.60 (.102)	6.30 (.248)	--	10.8 (.425)	C291 996 070	helical tube	
Super flexible	1/2"	50	solid	3.60 (.142)	8.70 (.343)	--	13.2 (.520)	C291 994 080	helical tube	
Super flexible	7/8"	50	tube	9.04 (.356)	23.62 (.930)	--	27.48 (1.082)	C291 996 580	helical tube	

Note: S = single braid. D = dual braid.

For more information about cables manufactured by Radiall, please consult our online catalog.

www.radiall.com

RADIALL
The next conneXion