

Activated by the touch of a finger, our **Capacitive Switches** are ideal for many repetitive applications requiring a **rugged sealed** and **easy** to use switch solution.



- ⊞ Sealed to IP68 and IP69K
- ⊞ Momentary or latching functions
- ⊞ Large or thin ring illumination options
- ⊞ Long life operation – 50 million of cycles
- ⊞ 16, 19, 22 or 25mm diameter options
- ⊞ Easy to use and clean
- ⊞ Extremely robust and durable – IK10 rated
- ⊞ No operating force required – ideal for repetitive applications
- ⊞ Activated by the touch of a finger – even with surgeon gloves
- ⊞ Natural, black and red anodised options as well as 316L stainless steels

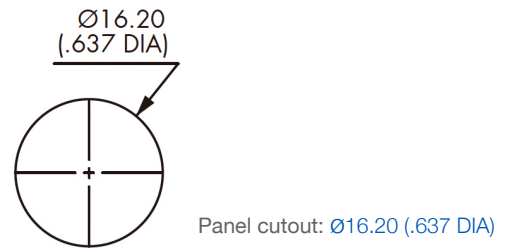


**Specification**

**MC16**

Type	Momentary / Latching
Materials	Case: Aluminium, Anodised and Stainless Steel
Maximum Current / Voltage Rating:	10mA 12 VDC
Supply Voltage	12 VDC
Contact Resistance	20mΩ
LED state for output image option	1 LED: The LED is ON when output is closed.  2 LEDs: First colour is ON when the output is open. Second colour is ON when the output is closed.
Actuating force, typically	Zero Newton's (Touch Sensitive)
Life cycle	>50 Million

**Panel Cutout Dimensions**



**Environmental Specification**

Sealing	IP68 (2m depth for >30mins) IP69K
Operating temperature	-25°C to +55°C
<b>RoHS</b>	Compliant

**Circuit Specification**

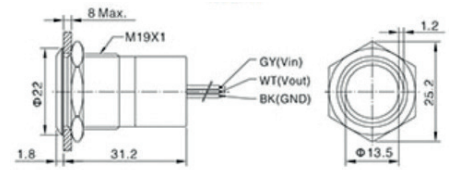
See wiring diagrams on Part No System page

19mm Illuminated



MC19

- Illuminated
- 300 mm lead

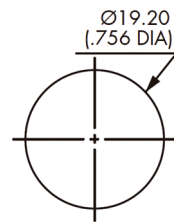


### Specification

### MC19

Type	Momentary / Latching
Materials	Case: Aluminium, Anodised and Stainless Steel Multi-wire leads section 0.22mm <sup>2</sup> (length 300mm)
Maximum Current / Voltage Rating:	10mA 12 VDC
Supply Voltage	12 VDC
Contact Resistance	20mΩ
LED state for output image option	1 LED: The LED is ON when output is closed. 2 LEDs: First colour is ON when the output is open. Second colour is ON when the output is closed.
Actuating force, typically	Zero Newton's (Touch Sensitive)
Life cycle	>50 Million

### Panel Cutout Dimensions



Panel cutout: Ø16.20 (.637 DIA)

### Environmental Specification

Sealing	IP68 (2m depth for >30mins) IP69K
Operating temperature	-25°C to +55°C
<b>RoHS</b>	Compliant

### Circuit Specification

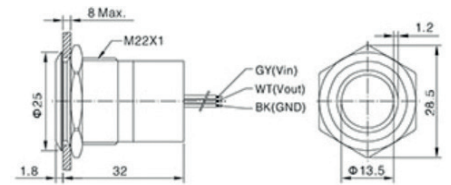
See wiring diagrams on Part No System page

22mm Illuminated



MC22

- Illuminated
- 300 mm lead

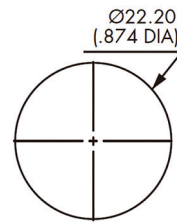


**Specification**

**MC22**

Type	Momentary / Latching
Materials	Case: Aluminium, Anodised and Stainless Steel  Multi-wire leads section 0.22mm <sup>2</sup> (length 300mm)
Maximum Current / Voltage Rating:	10mA 12 VDC
Supply Voltage	12 VDC
Contact Resistance	20mΩ
LED state for output image option	1 LED: The LED is ON when output is closed.  2 LEDs: First colour is ON when the output is open. Second colour is ON when the output is closed.
Actuating force, typically	Zero Newton's (Touch Sensitive)
Life cycle	>50 Million

**Panel Cutout Dimensions**



Panel cutout: Ø16.20 (.637 DIA)

**Environmental Specification**

Sealing	IP68 (2m depth for >30mins) IP69K
Operating temperature	-25°C to +55°C
<b>RoHS</b>	Compliant

**Circuit Specification**

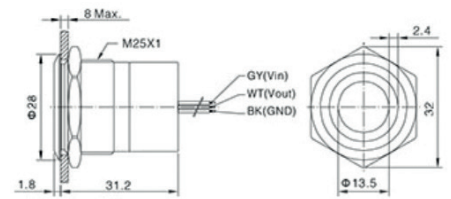
See wiring diagrams on Part No System page

25mm Illuminated



MC25

- Illuminated
- 300 mm lead



### Specification

### MC25

Type	Momentary / Latching
Materials	Case: Aluminium, Anodised and Stainless Steel
	Multi-wire leads section 0.22mm <sup>2</sup> (length 300mm)
Maximum Current / Voltage Rating:	10mA 12 VDC
Supply Voltage	12 VDC
Contact Resistance	20mΩ
LED state for output image option	1 LED: The LED is ON when output is closed. 2 LEDs: First colour is ON when the output is open. Second colour is ON when the output is closed.
Actuating force, typically	Zero Newton's (Touch Sensitive)
Life cycle	>50 Million

### Panel Cutout Dimensions



Panel cutout: Ø16.20 (.637 DIA)

### Environmental Specification

Sealing	IP68 (2m depth for >30mins) IP69K
Operating temperature	-25°C to +55°C
<b>RoHS</b>	Compliant

### Circuit Specification

See wiring diagrams on Part No System page

**Part No System**

<b>MC</b>	<b>/</b>	<b>XX</b>	<b>/</b>	<b>X</b>	<b>/</b>	<b>X</b>	<b>/</b>	<b>X</b>	
<b>Series</b> MC-Capacitive Switch		<b>Switch Size</b> 16 = 16mm 19 = 19mm 22 = 22mm 25 = 25mm		<b>Switch Function</b> M = Momentary L = Latching		<b>Switch Status</b> O = Normally Open C = Normally Closed		<b>Colour / Material</b> B = Black Anodised R = Red Anodised S = Stainless Steel	<b>LED Colours</b> GN = GREEN RD = RED AM = AMBER RG = RED + GREEN GR = GREEN + RED Blank = Non-illuminated

**Examples:**

MC16MOSRD = 16mm, Stainless Steel, Momentary Normally Open, Red Illumination  
 MC22LOBRG = 22mm, Black Anodised, Catching Normally Open, Red and Green Illumination

**Circuit Specifications**

Wiring Diagrams				Legend Grey Vin Black black GND White Vout  Wire colours may vary. Always refer to the label on the switch.
	1 LED		2 LEDS	
	Output Indicator	Output Indicator	Output Indicator	
<b>OFF-ON (momentary)</b>				
<b>ON-OFF (momentary)</b>				
<b>OFF-ON (latching)</b>				
<b>ON-OFF (latching)</b>				

Other switches are available upon request\*

# Mouser Electronics

Authorized Distributor

Click to View Pricing, Inventory, Delivery & Lifecycle Information:

## Bulgin:

[MC19MCBRD](#) [MC25LCSR](#) [MC25LCSRG](#) [MC19MOSGN](#) [MC22LOBRG](#) [MC19LCBRG](#) [MC16MOBRG](#)  
[MC19MOSAM](#) [MC25MCRAM](#) [MC19MOBGN](#) [MC22LOSRG](#) [MC19MOSGR](#) [MC22MOBGR](#) [MC16MOSRD](#)  
[MC22LCBRG](#) [MC22LOBRD](#) [MC19LCRRG](#) [MC22MCBGR](#) [MC25MOSRD](#) [MC25MORGN](#) [MC22LORGR](#)  
[MC22LCBGN](#) [MC25LORGN](#) [MC19MCSGN](#) [MC25MOSAM](#) [MC16MOSAM](#) [MC19LOBAM](#) [MC25LORRD](#)  
[MC16MORRG](#) [MC19MOSRD](#) [MC25LORRG](#) [MC19MCSRG](#) [MC25LCBRG](#) [MC22LORRG](#) [MC22MOSRD](#)  
[MC25LOBAM](#) [MC22LCSRG](#) [MC19LOSAM](#) [MC22MOBRG](#) [MC22LCRRG](#) [MC16MOBGN](#) [MC25LOSRG](#)  
[MC22LOSGN](#) [MC22MCSR](#) [MC25MOBGN](#) [MC25MOBAM](#) [MC25LCRRG](#) [MC22LCBRD](#) [MC25MCSR](#)  
[MC22LORGN](#) [MC16MOSRG](#) [MC25LOSGN](#) [MC22LORAM](#) [MC25LCBGN](#) [MC19LCSGR](#) [MC22MCRRD](#)  
[MC19LORGR](#) [MC22LCSGN](#) [MC19LOS](#) [MC25MCRGR](#) [MC25LCSGR](#) [MC19LCBRD](#) [MC19MCRGR](#)  
[MC16MOSGN](#) [MC25MCSGR](#) [MC16MOBGR](#) [MC25LCSAM](#) [MC19MCBAM](#) [MC22MORRG](#) [MC19MCSAM](#)  
[MC25LCBAM](#) [MC25LOSGR](#) [MC22LCSGR](#) [MC19MORRD](#) [MC25LOBRG](#) [MC22MOBGN](#) [MC19LCRGN](#)  
[MC25MORGR](#) [MC19LOS](#) [MC16MOSGR](#) [MC25LORAM](#) [MC19LOBRD](#) [MC25MOBGR](#) [MC19MORGR](#)  
[MC25MCSGN](#) [MC19LORGN](#) [MC25MCSRG](#) [MC25LCRGR](#) [MC25MCRRD](#) [MC22LOBAM](#) [MC16MORGR](#)  
[MC22LORRD](#) [MC19LOBGR](#) [MC22LOSGR](#) [MC19MOBRD](#) [MC25LOS](#) [MC22MOBAM](#) [MC22LOBGR](#)  
[MC25MCSAM](#) [MC22MCRRG](#)