

# Customer Information Sheet

DRAWING No.: M80-500XXX

SHEET 2 OF 2

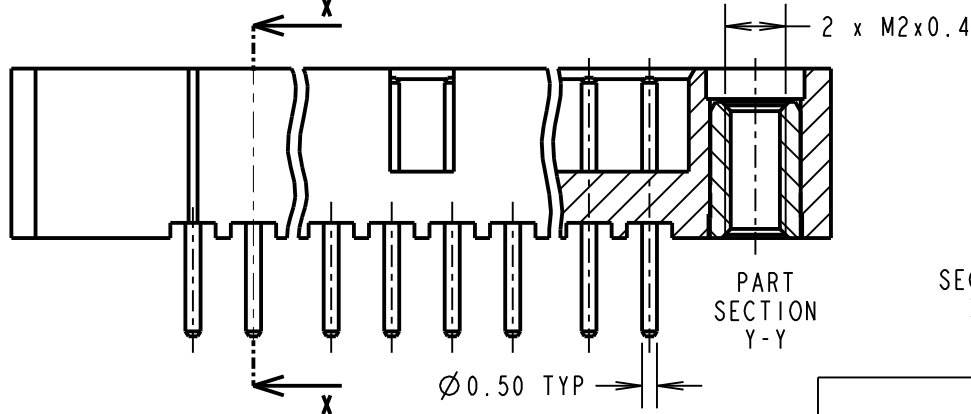
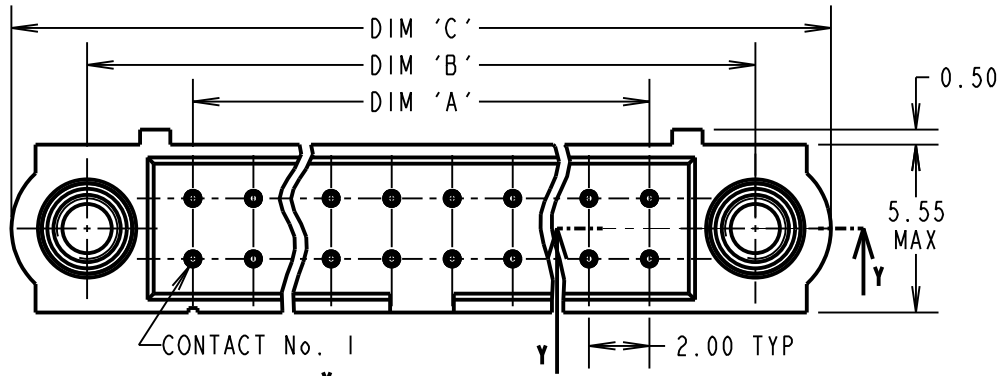
IF IN DOUBT - ASK

©

NOT TO SCALE

THIRD ANGLE PROJECTION

ALL DIMENSIONS IN mm



ORDER CODE:  
**M80-500XXX**

No. OF CONTACTS  
04 TO 50  
(EVEN NUMBERS ONLY)

FINISH \_\_\_\_\_

05 - GOLD  
22 - SELECTIVE GOLD + TIN/LEAD  
42 - SELECTIVE GOLD + 100% TIN

SPECIFICATIONS:

MATERIAL:  
MOULDING = GLASS-FILLED PPS,  
UL94V-0, BLACK  
CONTACT = PHOSPHOR BRONZE  
JACKSCREW = STAINLESS STEEL  
FINISH: (ALL OVER NICKEL)  
05 = 0.75µm ALL OVER GOLD  
22 = 0.75µm GOLD ON CONTACT AREA,  
3µm 90/10 TIN/LEAD ON TAILS  
42 = 0.75µm GOLD ON CONTACT AREA,  
3µm 100% TIN ON TAILS

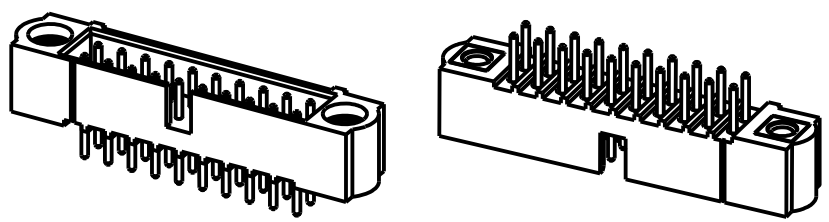
ELECTRICAL:  
CURRENT RATING AT 25°C = 3.0A MAX  
CURRENT RATING AT 85°C = 2.2A MAX  
WORKING VOLTAGE = 800V AC/DC  
VOLTAGE PROOF = 1200V AC/DC  
CONTACT RESISTANCE = 25mΩ MAX  
INSULATION RESISTANCE = 100MΩ MIN

MECHANICAL:  
DURABILITY = 500 OPERATIONS

ENVIRONMENTAL:  
TEMPERATURE RANGE = -55°C TO +125°C

PACKING:  
TUBE  
FOR COMPLETE SPECIFICATION, SEE  
COMPONENT SPECIFICATION C005XX  
(LATEST ISSUE)

NOTES:  
1. RECOMMENDED PCB HOLE  
SIZE = Ø0.70mm±0.05



DIMENSION	CALCULATION
DIM 'A'	TOTAL No. OF CONTACTS - 2.00
DIM 'B'	TOTAL No. OF CONTACTS + 5.00
DIM 'C'	TOTAL No. OF CONTACTS + 10.0
EXAMPLE: CONNECTOR WITH 20 CONTACTS, GOLD ON CONTACT AREA AND 100% TIN OVER NICKEL ON TAIL, M80-5002042.	
DIM 'A' = 18.00mm, DIM 'B' = 25.00mm, DIM 'C' = 30.0mm	

MGP	3	16.08.18	21475
NAME	ISS.	DATE	C/NOTE
APPROVED: MGP			
CHECKED: SB			
DRAWN: W. J. BOURNE			
CUSTOMER REF.:			
ASSEMBLY DRG:			

## HARWIN

www.harwin.com  
technical@harwin.com

THIS DRAWING AND ANY INFORMATION OR DESCRIPTIVE MATTER SET OUT HEREON ARE CONFIDENTIAL AND COPYRIGHT PROPERTY OF THE HARWIN GROUP AND MUST NOT BE DISCLOSED, LOANED, COPIED OR USED FOR MANUFACTURING, TENDERING OR FOR ANY OTHER PURPOSE WITHOUT THEIR WRITTEN PERMISSION.

TOLERANCES  
X. = ±1mm  
X.X = ±0.50mm  
X.XX = ±0.10mm  
X.XXX = ±0.01mm  
ANGLES = ±5°  
UNLESS STATED

MATERIAL:  
SEE ABOVE

FINISH: SEE ABOVE

S/AREA: mm<sup>2</sup>

TITLE: JACKSCREW DATAMATE  
DIL VERTICAL PC TAIL  
MALE ASSEMBLY

DRAWING NUMBER:  
**M80-500XXX**

# Mouser Electronics

Authorized Distributor

Click to View Pricing, Inventory, Delivery & Lifecycle Information:

## Harwin:

[M80-5005022](#) [M80-5001422](#) [M80-5000622](#) [M80-5004222](#) [M80-5002022](#) [M80-5002642](#) [M80-5003442](#) [M80-5002042](#) [M80-5001442](#) [M80-5001042](#) [M80-5000642](#) [M80-5004242](#) [M80-5005042](#) [M80-5000422](#) [M80-5000442](#) [M80-5000842](#) [M80-5001022](#) [M80-5002622](#) [M80-5003422](#) [M80-5001222](#) [M80-5001242](#) [M80-5001822](#) [M80-5001842](#) [M80-5001642](#) [M80-5004042](#) [M80-5004405](#) [M80-5003842](#) [M80-5001405](#) [M80-5003642](#) [M80-5004442](#) [M80-5002442](#) [M80-5001205](#) [M80-5T22022B1-00-000-00-000](#) [M80-5T20605B1-00-000-00-000](#) [M80-5T22622B1-00-000-00-000](#) [M80-5T21005B1-00-000-00-000](#) [M80-5T22642B1-00-000-00-000](#) [M80-5T22042B1-00-000-00-000](#) [M80-5T21422B1-00-000-00-000](#) [M80-5T20622B1-00-000-00-000](#) [M80-5T21442B1-00-000-00-000](#) [M80-5T20642B1-00-000-00-000](#) [M80-5T21022B1-00-000-00-000](#) [M80-5T21042B1-00-000-00-000](#) [M80-5T21405B1-00-000-00-000](#) [M80-5T22605B1-00-000-00-000](#) [M80-5T22005B1-00-000-00-000](#) [M80-5000822](#) [M80-5003022](#) [M80-5001605](#)