

Quick Reference

Search by part #

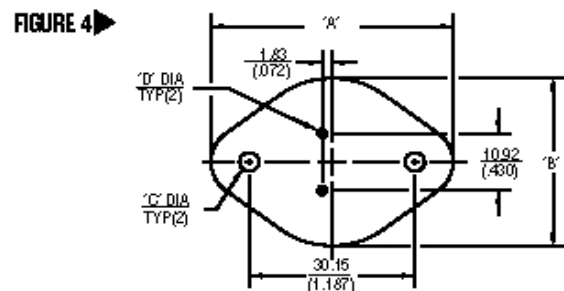
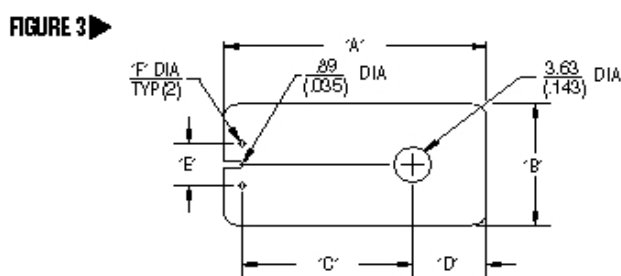
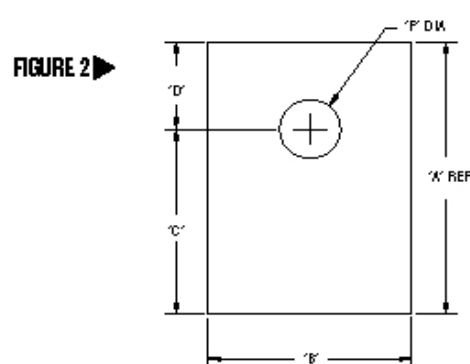
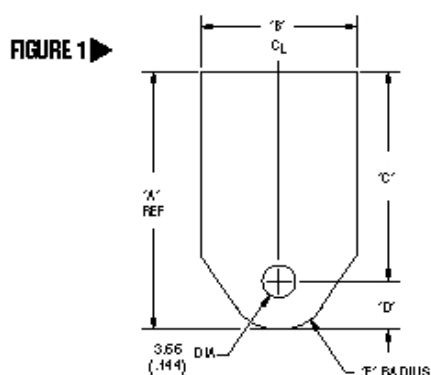
Check distributor part inventory

Mica

Mica insulators provide high maximum operating temperatures (550°C) and excellent electrical properties.

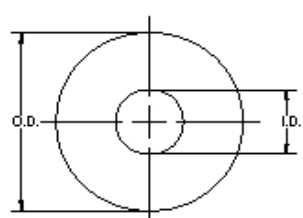
| Part No. | RoHS | PCN | Figure | Case Style | A | B | C | D | E | F | Thickness |
|-----------|-----------------|-----|--------|------------|---------------|---------------|--------------|-------------|-------------|-------------|---------------------|
| 56-02-95 | RoHS Compliant | N/A | 1 | TO-218 | 23.24 (.915) | 18.80 (.740) | 16.26 (.640) | 6.98 (.275) | N/A | 5.59 (.220) | .05/.10 (.002/.004) |
| 56-77-10 | RoHS Compliant | N/A | 3 | TO-220 | 21.89 (.862) | 13.21 (.520) | 14.73 (.580) | 5.26 (.270) | 5.08 (.200) | 1.75 (.070) | .05/.10 (.002/.004) |
| 56-77-8G | RoHS Compliant | | 2 | TO-220 | 18.93 (.745) | 13.84 (.545) | 13.54 (.533) | 5.38 (.212) | N/A | 3.81 (.150) | .05/.10 (.002/.004) |
| 56-77-11G | RoHS Compliant | | 2 | TO-220 | 18.93 (.745) | 13.84 (.545) | 13.54 (.533) | 5.38 (.212) | N/A | 3.05 (.120) | .05/.10 (.002/.004) |
| 56-03-2G | RoHS Compliant | | 4 | TO-3 | 42.04 (1.655) | 27.00 (1.063) | 3.96 (.156) | 1.57 (.062) | N/A | N/A | .05/.10 (.002/.004) |
| 56-03-8G | RoHS Compliant | | 4 | TO-3 | 42.85 (1.687) | 30.15 (1.187) | 3.96 (.156) | 1.57 (.062) | N/A | N/A | .05/.10 (.002/.004) |

* This insulator is also for TO -18, TO -247, and TO3P.
Note: Tolerances are ± .38mm (.015") unless otherwise specified.



Note: Tolerances are ± .38mm (.015") unless otherwise specified.

| Property | Typical Value 25°C |
|---|---|
| Electrical | |
| Dielectric Strength .025mm to .076mm thick in air (1 to 3 mils thick in air) | 172 x 10 ³ volts/mm (4500 volts/mil) |
| Dielectric Constant | 6.5 to 8.7 |
| Dissipation Factor 10 ⁶ Cycles | .0001 -.004 |
| Volume Resistivity | 10 ¹⁵ ohm -cm |
| Physical | |
| Modulus of Elasticity in Tension | 172 x 10 ³ (25 x 10 ⁶ psi) |
| Tensile Strength | 310 MPa (45,000 psi) |
| Hardness Mohs Shore | 3.0 115 |
| Comprehensive Strength | 2.21 x 10 ⁸ Pa (32,000 psi) |
| Specific Gravity | 2.9 |
| Thermal | |
| Thermal Conductivity: | 0.528 Wm ⁻¹ °C ⁻¹ (.30 Btu/hr.ft °F) |
| Coefficient of Thermal Expansion | 3.24 x 10 ⁻⁵ /°C (1.8x 10 ⁻⁵ /°F) |
| Specific Heat | .084 KJ/Kg°C (.02 Btu/Lb °F) |
| Melting Point | 1275°C |
| Maximum Operating Temperature (1022°C) | 550°C |
| Chemical Composition | |
| Silica | 45.4% |
| Alumina | 37.5% |
| Potash | 12.0% |
| Water | 5.0% |



| Part Number | ID | OD | Diameter Tolerances | Thickness |
|-------------|-------------|--------------|---------------------|---------------------|
| 56-02-10 | 5.16 (.203) | 14.30 (.563) | ± 13 (.005) | .05/.10 (.002/.004) |
| 56-02-72 | 6.55 (.258) | 25.40 (1.00) | ± 38 (.015) | .10/.15 (.004/.006) |