

# KRM55L7U2J473JDL1#

“#” at the end indicates the package specification code.



## < List of part numbers with package codes >

KRM55L7U2J473JDL1L      KRM55L7U2J473JDL1K

## Applications

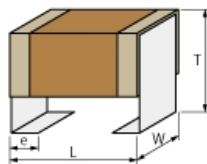
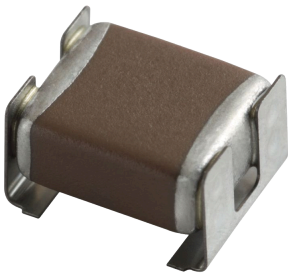
Unsuitable Applications	Please be sure to read and comply with these "Precautions for use."
Specific Applications	<p>Consumer equipment, Industrial Equipment, Mobile Electronics, Medical equipment [GHTE A/B/C] except for implant equipment</p> <p>Please refer to Our Website and specifications, etc. for information about the performance, functions, quality, management, and safety required for the above applications, and use Products after confirming the performance and reliability of the actual Product.</p>

## References

Packaging	Specifications	Standard Packing Quantity
L	180 Embossed Tape	400
K	330 Embossed Tape	2000

Mass (typ.)	
1 piece	0.26g

## Appearance & Shape



### Attention

1. This datasheet is downloaded from the website of Murata Manufacturing Co., Ltd. Therefore, its specifications are subject to change or our products in it may be discontinued without advance notice. Please check with our sales representatives or product engineers before ordering.
2. This datasheet has only typical specifications because there is no space for detailed specifications. Therefore, please review our product specifications or consult the approval sheet for product specifications before ordering.

# KRM55L7U2J473JDL1#

“#” at the end indicates the package specification code.



## Specifications

Length	6.1±0.4mm
Width	5.1±0.3mm
Thickness	2.8±0.3mm
Capacitance	47000pF ±5%
Metal terminal width e	0.9±0.2mm
Operating Temperature Range	-55°C to 125°C
Rated Voltage	630Vdc
TC	-55 to 25°C: -750+120/-347ppm/°C 25 to 125°C: -750±120ppm/°C
Temperature characteristics (complied standard)	U2J(EIA)
Temperature range of temperature characteristics	-55°C to 125°C

### Attention

- 1.This datasheet is downloaded from the website of Murata Manufacturing Co., Ltd. Therefore, it's specifications are subject to change or our products in it may be discontinued without advance notice. Please check with our sales representatives or product engineers before ordering.
- 2.This datasheet has only typical specifications because there is no space for detailed specifications.  
Therefore, please review our product specifications or consult the approval sheet for product specifications before ordering.

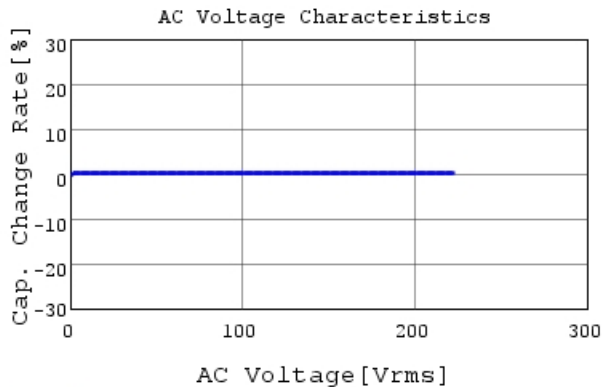
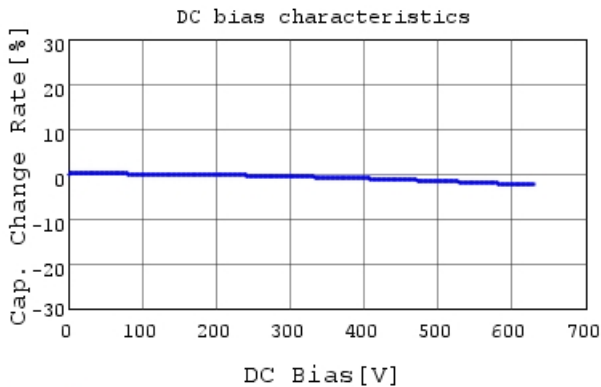
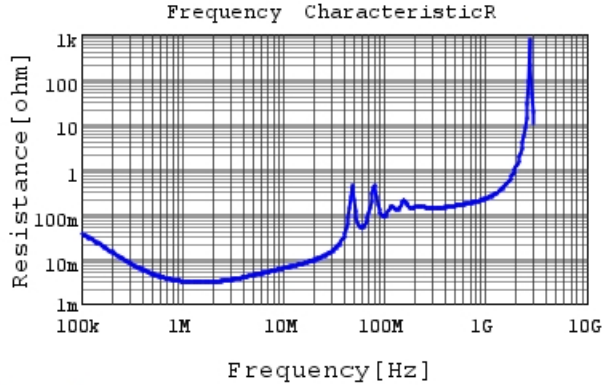
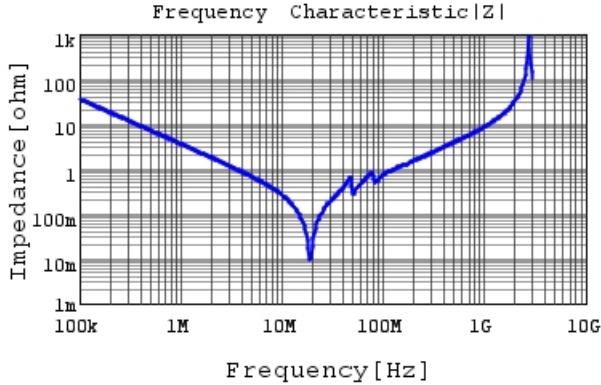
# KRM55L7U2J473JDL1#

“#” at the end indicates the package specification code.



## Characteristic Data

The charts below may show another part number which shares its characteristics.

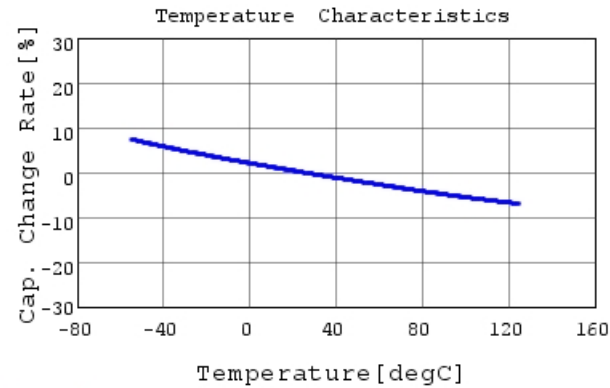


### Attention

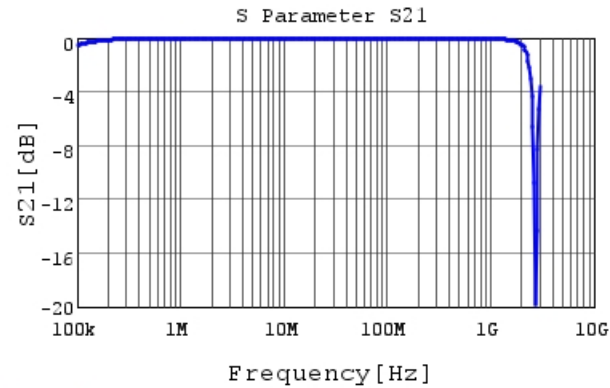
- 1.This datasheet is downloaded from the website of Murata Manufacturing Co., Ltd. Therefore, it's specifications are subject to change or our products in it may be discontinued without advance notice. Please check with our sales representatives or product engineers before ordering.
- 2.This datasheet has only typical specifications because there is no space for detailed specifications.  
Therefore, please review our product specifications or consult the approval sheet for product specifications before ordering.

# KRM55L7U2J473JDL1#

“#”at the end indicates the package specification code.



KRM55L7U2J473JDL1 C-Temp. capchange, DCOV, 1



KRM55L7U2J473JDL1 S21 DCOV, 25degC

## Attention

- 1.This datasheet is downloaded from the website of Murata Manufacturing Co., Ltd. Therefore, it's specifications are subject to change or our products in it may be discontinued without advance notice. Please check with our sales representatives or product engineers before ordering.
- 2.This datasheet has only typical specifications because there is no space for detailed specifications.  
Therefore, please review our product specifications or consult the approval sheet for product specifications before ordering.