

# Terminal Block Accessories

## J & JS Jumpers

| Catalog #   | A    | B    | C    | D    | E    | F    | G     | H     | J    | K    |
|-------------|------|------|------|------|------|------|-------|-------|------|------|
| J 410/J 411 | 0.41 | 0.25 | 0.19 | 0.09 | 0.10 | 0.04 | 0.010 | 0.094 | 0.08 | NA   |
| J 600       | 0.62 | 0.38 | 0.25 | 0.12 | 0.16 | 0.04 | 0.015 | 0.156 | 0.08 | NA   |
| J 601       | 0.71 | 0.45 | 0.31 | 0.15 | 0.19 | 0.06 | 0.015 | 0.166 | 0.11 | NA   |
| J 602       | 0.91 | 0.56 | 0.37 | 0.18 | 0.27 | 0.08 | 0.015 | 0.190 | 0.16 | NA   |
| J 603       | 1.13 | 0.69 | 0.43 | 0.21 | 0.25 | 0.12 | 0.031 | 0.201 | 0.24 | NA   |
| J 604       | 1.38 | 0.88 | 0.50 | 0.25 | 0.35 | 0.15 | 0.035 | 0.234 | 0.32 | NA   |
| J 605       | 1.75 | 1.13 | 0.62 | 0.31 | 0.39 | 0.24 | 0.035 | 0.266 | 0.54 | NA   |
| J 621       | 0.69 | 0.44 | 0.30 | 0.17 | 0.38 | 0.07 | 0.015 | 0.141 | 0.11 | 0.14 |
| JS 600      | 0.62 | 0.38 | 0.25 | 0.12 | 0.16 | 0.04 | 0.015 | 0.156 | 0.08 | 0.16 |
| JS 601      | 0.71 | 0.45 | 0.31 | 0.15 | 0.19 | 0.06 | 0.015 | 0.166 | 0.11 | 0.17 |
| JS 602      | 0.91 | 0.56 | 0.37 | 0.18 | 0.27 | 0.08 | 0.015 | 0.190 | 0.16 | 0.14 |

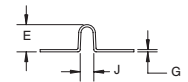
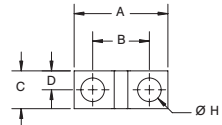
MSP Catalog Designations:

J 600 = LL 100  
J 601 = LL 200  
J 602 = LL 300  
J 603 = LL 400

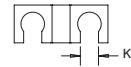
J Type Jumper

Material: Brass  
Finish: Nickel Plate

JS Type Jumper  
(per 55164/28B)



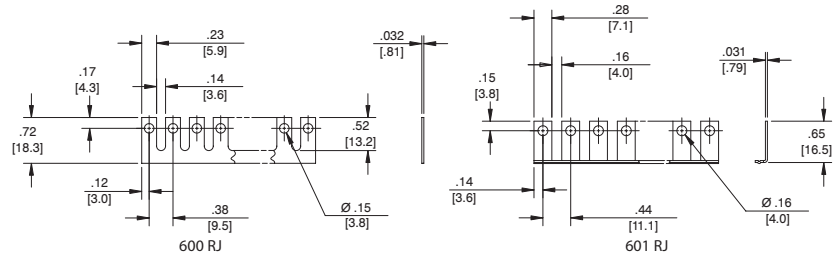
mm = dim X 25.4



NOTE 1: These parts are not necessarily supplied flat. The functioning of the part, however, will not be interfered.

NOTE 2: All dimensions are applicable after the bus (jumper) is torqued down into the associate terminal board.

## RJ Type Jumpers

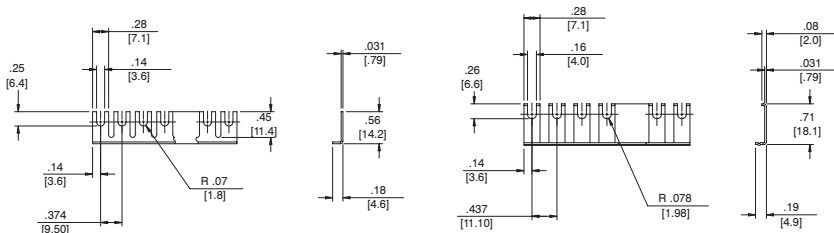


Material: Brass  
Finish: Nickel Plate

Max # of sections = 24  
Note: 670A RZ, 599 Series, use 600 RJ

Max # of sections = 24

## RJS Type Jumpers

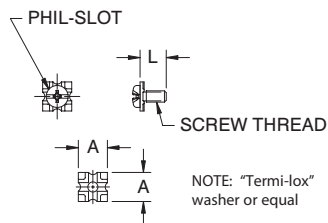


Material: Brass  
Finish: Nickel Plate

Max # of sections = 24  
Note: 670A RZ, 599 Series, use 600 RJ

Max # of sections = 24

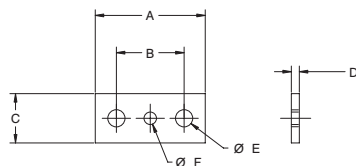
## Wire Clamp



| Catalog # | Material | Finish | Screw Thread | L    | A    |
|-----------|----------|--------|--------------|------|------|
| 3786      | Steel    | Nickel | 8-32 UNC     | 0.38 | 0.41 |
| 3765      |          |        | 6-32 UNC     | 0.31 | 0.33 |
| 3780      | Brass    | Nickel | 8-32 UNC     | 0.38 | 0.41 |
| 3760      |          |        | 6-32 UNC     | 0.31 | 0.33 |
| 3860      | Brass    | Nickel | 6-32 UNC     | 0.30 | 0.29 |
| 3865      | Steel    | Nickel | 6-32 UNC     | 0.30 | 0.29 |

mm = dim X 25.4

## Straddle Plate



| Catalog # | A    | B    | C    | D     | E     | F     | Material | Finish |
|-----------|------|------|------|-------|-------|-------|----------|--------|
| SPB 600   | 0.56 | 0.31 | 0.30 | 0.032 | 0.144 | N/A   | Brass    | Tin    |
| SPB 601   | 0.71 | 0.42 | 0.30 | 0.031 | 0.148 | N/A   | Brass    | Nickel |
| SPB 602   | 0.87 | 0.50 | 0.40 | 0.032 | 0.189 | N/A   | Brass    | Nickel |
| SPB 603   | 1.03 | 0.62 | 0.45 | 0.063 | 0.190 | 0.143 | Brass    | Tin    |
| SPB 604   | 1.21 | 0.75 | 0.54 | 0.087 | 0.187 | 0.138 | Brass    | Tin    |
| SPB 605   | 1.46 | 0.87 | 0.63 | 0.116 | 0.220 | 0.138 | Brass    | Nickel |

mm = dim X 25.4