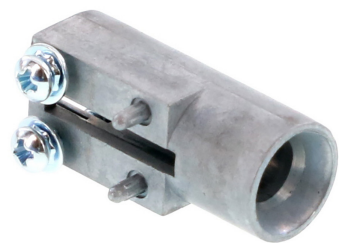




**Part Number :** [761531001](#)  
**Product Description :** 11.00mm Stand Alone, Pirate Cannon Wide Guide Module, Zinc Die Cast  
**Series Number :** 76153  
**Status :** Active  
**Product Category :** Backplane Connectors



## Documents & Resources


**Drawings**  
[761531001\\_sd.pdf](#)  
[PK-70873-590-001.pdf](#)

**3D Models and Design Files**  
[761531001\\_stp.zip](#)  
[SYM-76153-1001-001.zip](#)

**Specifications**  
[PS-76060-999-001.pdf](#)

## Product Environment Compliance

### Compliance

GADSL/IMDS	Compliant with Exemption 44; 47
China RoHS	
EU ELV	Not Relevant
Low-Halogen Status	Low-Halogen per IEC 61249-2-21
REACH SVHC	Not Contained per D(2024)4144-DC (27 June 2024)
EU RoHS	Compliant per EU 2015/863

### Multiple Part Product Compliance Statements

- Eu RoHS
- REACH SVHC
- Low-Halogen

### Multiple Part Industry Compliance Documents

- IPC 1752A Class C

- IPC 1752A Class D
- Molex Product Compliance Declaration
- IEC-62474
- chemSHERPA (xml)

## EU RoHS Certificate of Compliance

---

### Part Details

#### General

Status	Active
Category	Backplane Connectors
Series	76153
Description	11.00mm Stand Alone, Pirate Cannon Wide Guide Module, Zinc Die Cast
Application	Daughtercard
Comments	For additional Impact product information and design assistance, please email <a href="mailto:impact@molex.com">mailto:impact@molex.com</a>
Component Type	Guide
Product Name	GbX,GbX I-Trac,HDM,Impact,VHDM,VHDM-HSD,Z-PACK TinMan
UPC	883906031695

#### Electrical

Current - Maximum per Contact	N/A
Data Rate	N/A
Shielded	No
Voltage - Maximum	N/A

#### Physical

Circuits (Loaded)	0
Circuits (maximum)	0
Durability (mating cycles max)	200
First Mate / Last Break	No
Guide to Mating Part	Yes
Keying to Mating Part	None

Material - Metal	Zinc Alloy
Material - Plating Mating	Gold
Net Weight	10.711/g
Number of Columns	N/A
Number of Pairs	N/A
Number of Rows	0
Orientation	Right Angle
Packaging Type	Bag
PC Tail Length	N/A
PCB Locator	Yes
PCB Retention	Yes
PCB Thickness - Recommended	1.00mm
Pitch - Mating Interface	N/A
Pitch - Termination Interface	N/A
Polarized to PCB	Yes
Stackable	No
Temperature Range - Operating	N/A

#### Solder Process Data

Max-Duration	40
Lead-Free Process Capability	SMC&WAVE
Max-Cycle	3
Max-Temp	260

---

#### Mates With / Use With

##### Mates with Part(s)

Description	Part Number
GbX I-Trac Backplane Free Standing Wide Guide Pin, Use with 1.60mm minimum PCB Thickness, 28.14 Height	<u>752341478</u>