

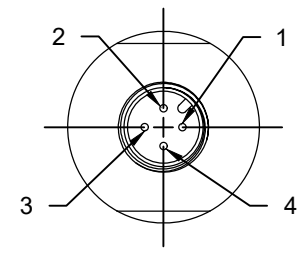
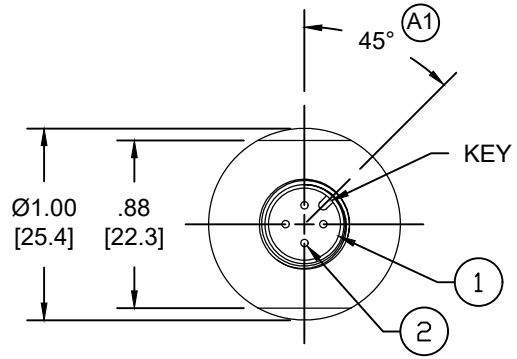
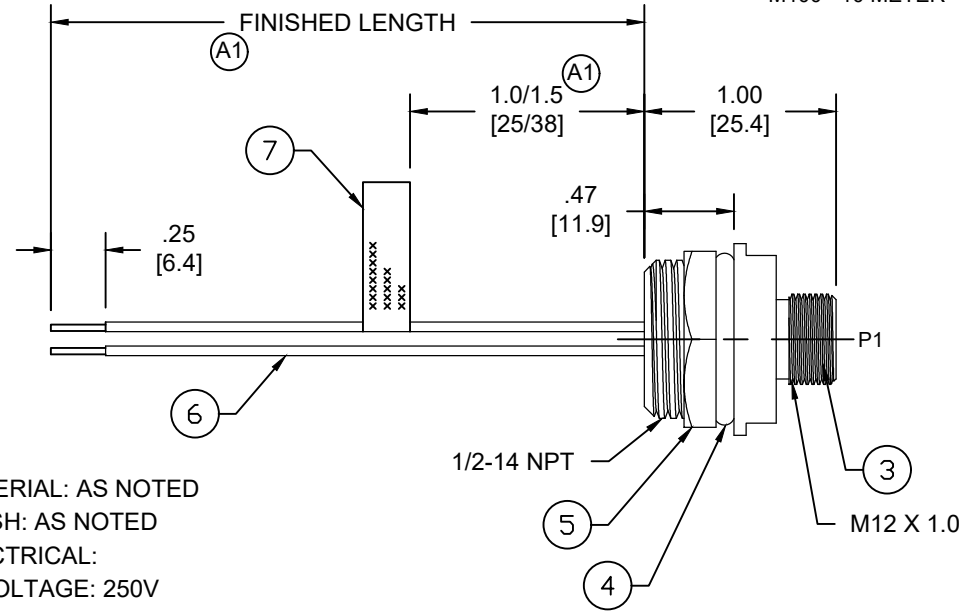
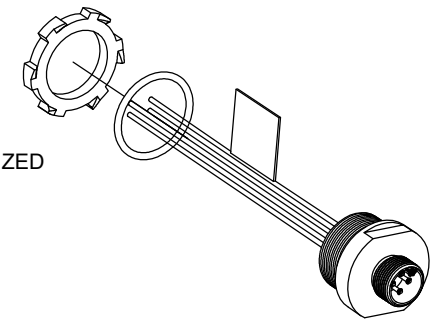
MATERIAL NO.	ENGINEERING NO.	FINISHED LENGTH
1200700183	8R4006A18A060	6 IN [ 0.5FT ]
1200700185	8R4006A18A1201	12 IN [1FT]
1200700186	8R4006A18F040	4FT [ 1.2M ]
1200704010	8R4006A18M120	12M [ 39FT 4 IN ]

**PART NUMBER LEGEND (A1)**

8R4006A18A1201

**FINISHED LENGTH:**  
 A120= 12 INCHES  
 F010= 1 FEET  
 M005= 0.5 METER  
 M010= 1 METER  
 M100= 10 METER

**SHELL MATERIAL/FINISH:**  
 BLANK= ALUMINUM/BLACK ANODIZED  
 1= 303 STAINLESS STEEL

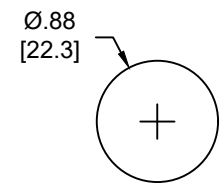


**MALE FACE VIEW**

**NOTES:**

- MATERIAL: AS NOTED
- FINISH: AS NOTED
- ELECTRICAL:  
VOLTAGE: 250V  
CURRENT: 4A
- TEMP RATING: -20°C TO +80°C
- PROTECTION: IP67 (WHEN MATED)
- UL LISTED FILE: E152210  
CSA CERTIFIED FILE: LR6837
- ALL DIMENSIONS ARE FOR REFERENCE UNLESS TOLERANCED OR NOTED OTHERWISE

	P1
BROWN	1
WHITE	2
BLUE	3
BLACK	4



**TYPICAL KNOCKOUT HOLE**

**WIRING DIAGRAM**

CABLE LENGTH TOLERANCES	
<.3M [1FT]:	+19mm-0 [ +.75in-0]
.3 - .9M [1 - 3FT]:	+44.5mm-0 [ +1.75in-0]
.9 - 1.8M [3 - 6FT]:	+55.6mm-0 [ +2.19in-0]
1.8 - 3.7M [6 - 12FT]:	+88.9mm-0 [ +3.50in-0]
3.7 - 7.3M [12 - 24FT]:	+165.1mm-0 [ +6.50in-0]
7.3-14.6M [24 - 48FT]:	+317.5mm-0 [ +12.50in-0]
14.6 - 30.5M [48-100FT]:	+622.3mm-0 [ +24.50in-0]
OVER 30M [100FT]	+2% OF FINISHED LENGTH

ITEM	COMPONENT	MATERIAL	FINISH
7	FLAG LABEL	VINYL	CLEAR/YELLOW
6	CONDUCTOR -22AWG, 26 x #36 STRANDING, 300 VOLTS	PVC	SEE WIRING DIAGRAM
5	LOCKNUT	STEEL	ZINC PLATED
4	O-RING	NITRILE	BLACK
3	RECEPTACLE SHELL	SEE P/N LEGEND	SEE P/N LEGEND
2	CONTACT PIN	COPPER ALLOY	GOLD OVER NICKEL
1	INSERT	NYLON	BLACK
ITEM	COMPONENT	MATERIAL	FINISH

FUNCTIONAL SYMBOLS $\nabla_A = 0$ $\nabla_C = 0$ $\nabla_F = 0$	DIMENSION UNITS <b>INCH/MM</b>	SCALE <b>NTS</b>	CURRENT REV DESC: MODIFIED PN CHART & FINISHED LENGTH DIM. ADDED PN LEGEND, KEY ANGLE, CABLE TOL CHART & LABEL DIM.		
	GENERAL TOLERANCES (UNLESS SPECIFIED)		EC NO: 775458 DRWN: ABENJAMINLW 2024/01/24 CHK'D: PODODAMANEMY 2024/01/29 APPR: BWOODMAN 2024/02/20		
	DIVISIONAL SYMBOLS 4 PLACES ± --- ± --- 3 PLACES ± --- ± --- 2 PLACES ± --- ± --- 1 PLACE ± --- ± --- 0 PLACES ± --- ± ---		INITIAL REVISION: DRWN: BWOODMAN 2009/03/31 APPR: JFMURPHY 2009/04/08		
	ANGULAR TOL ± --- °		THIRD ANGLE PROJECTION 		
DRAFT WHERE APPLICABLE MUST REMAIN WITHIN DIMENSIONS		DRAWING <b>A-SIZE</b>	SERIES <b>120070</b>	MATERIAL NUMBER <b>SEE CHART</b>	CUSTOMER <b>GENERAL MARKET</b>

**MICRO-CHANGE RECEPTACLE, A-SIZE  
4 POLE, MALE, STRAIGHT, SINGLE KEY,  
#22 AWG**

**PRODUCT CUSTOMER DRAWING**

DOCUMENT NUMBER	DOC TYPE	DOC PART	REVISION
<b>SD-120070-005</b>	<b>PSD</b>	<b>001</b>	<b>A1</b>

DOCUMENT STATUS	P1	RELEASE DATE	2024/02/20	14:59:12
-----------------	----	--------------	------------	----------