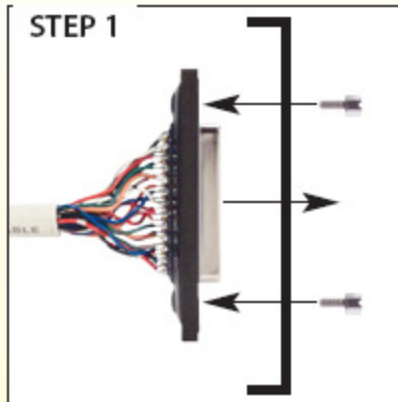


## Waterproof D-Sub Backshell Kits

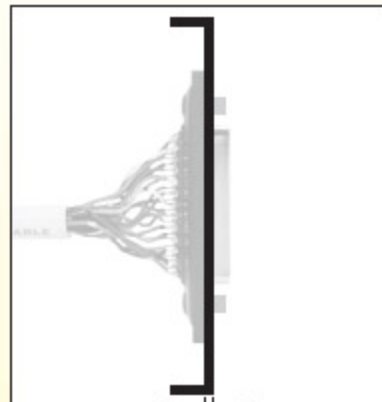
These backshells include solder cup connectors and are also available in male or female genders and DB9, DB15, DB25 and HD15 sizes. The connectors will accommodate wire ranges from 30 - 20 AWG. Backshell construction features ABS housings, nylon seals, nickel plated brass thumbscrews and rubber sealing gaskets to insure IEC IP67 rating. Color is black.

WPDB9P-KIT	Waterproof D-Sub Backshell Kit, DB9M	11.75	10.81	9.87	8.93	7.99
WPDB9S-KIT	Waterproof D-Sub Backshell Kit, DB9F	11.75	10.81	9.87	8.93	7.99
WPDB15P-KIT	Waterproof D-Sub Backshell Kit, DB15M	13.75	12.65	11.55	10.45	9.35
WPDB15S-KIT	Waterproof D-Sub Backshell Kit, DB15F	13.75	12.65	11.55	10.45	9.35
WPDB25P-KIT	Waterproof D-Sub Backshell Kit, DB25M	16.25	14.95	13.65	12.35	11.05
WPDB25S-KIT	Waterproof D-Sub Backshell Kit, DB25F	16.25	14.95	13.65	12.35	11.05
WPHDB15P-KIT	Waterproof D-Sub Backshell Kit, HD15M	13.75	12.65	11.55	10.45	9.35
WPHDB15S-KIT	Waterproof D-Sub Backshell Kit, HD15F	13.75	12.65	11.55	10.45	9.35

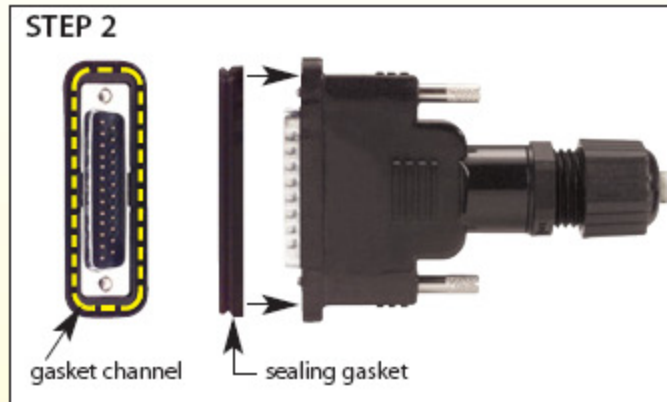
### TIP: How to apply panel mount waterproof D-Sub products



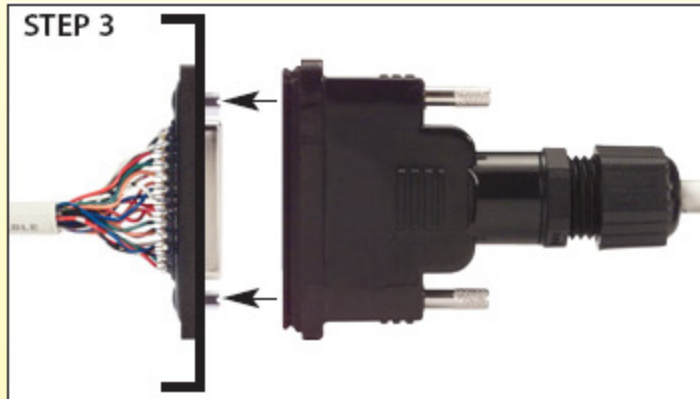
Mount D-Sub connector from inside of panel/enclosure using hex jack screws provided.



Maximum panel thickness is 0.062"



Apply sealing gasket (supplied with backshell kit) in backshell channel around perimeter of D-Sub connector.



Mate connectors and secure backshell thumbscrews to threaded jackscrews.



Waterproof IP67 rating is achieved by gaskets/seals in backshell and silicone seal ring in connector.



WPDB9P-KIT

WPDB9S-KIT

WPDB15P-KIT

WPDB15S-KIT

WPDB25P-KIT

WPDB25S-KIT

WPHDB15P-KIT

WPHDB15S-KIT

## Multiconductor

CS4-100  
• 4 Conductors



CS9-100  
• 9 Conductors



CS15-100  
• 15 Conductors



CS25-100  
• 25 Conductors



## Bulk Multiconductor Data Cable - 24 AWG Stranded Conductors

This is one of the most popular choices for most data cable applications. Conductors are 24 AWG 7/32 stranded conductors with PVC insulation. Jacket is also PVC, color is chrome gray. Foil shielding with tinned drain wire. Choose from 4, 9, 15 or 25 conductors and 100 ft coils or 500 and 1000 ft spools. UL and CSA Listed. See [page 140](#) for other multiconductor options.

CS4-100	4 Conductor 24 AWG Bulk Cable, 100 ft Coil	16.50	15.51	14.52	13.53	CALL
CS4-500	4 Conductor 24 AWG Bulk Cable, 500 ft Spool	74.25	69.80	65.34	60.89	CALL
CS4-1000	4 Conductor 24 AWG Bulk Cable, 1000 ft Spool	148.50	139.59	130.68	121.77	CALL
CS9-100	9 Conductor 24 AWG Bulk Cable, 100 ft Coil	29.50	27.73	25.96	24.19	CALL
CS9-500	9 Conductor 24 AWG Bulk Cable, 500 ft Spool	132.75	124.79	116.82	108.85	CALL
CS9-1000	9 Conductor 24 AWG Bulk Cable, 1000 ft Spool	265.50	249.57	233.64	217.71	CALL
CS15-100	15 Conductor 24 AWG Bulk Cable, 100 ft Coil	47.50	44.65	41.80	38.95	CALL
CS15-500	15 Conductor 24 AWG Bulk Cable, 500 ft Spool	213.75	200.93	188.10	175.27	CALL
CS15-1000	15 Conductor 24 AWG Bulk Cable, 1000 ft Spool	427.50	401.85	376.20	350.55	CALL
CS25-100	25 Conductor 24 AWG Bulk Cable, 100 ft Coil	69.50	65.33	61.16	56.99	CALL
CS25-500	25 Conductor 24 AWG Bulk Cable, 500 ft Spool	312.75	293.98	275.22	256.46	CALL
CS25-1000	25 Conductor 24 AWG Bulk Cable, 1000 ft Spool	625.50	587.97	550.44	512.91	CALL