

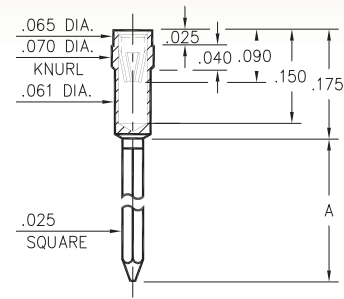
WRAPOST RECEPTACLES

FOR .022" - .032" DIAMETER PINS (#06 CONTACT)
FOR .022" - .034" DIAMETER PINS (#16 CONTACT)

2297

2297-X-17-XX-16-XX-02-0

Press-fit in .067 mounting hole

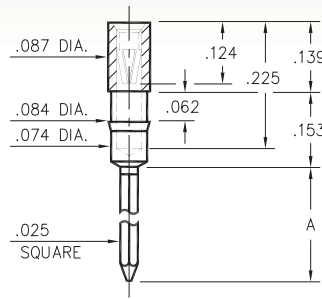


Basic Part Number	# of Wraps	Length A
2297-2	2	.370
2297-3	3	.430

0280

0280-X-17-XX-06-XX-02-0

Press-fit in .081 mounting hole

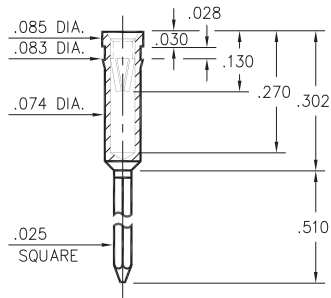


Basic Part Number	# of Wraps	Length A
0280-2	2	.360
0280-3	3	.510

0281

0281-3-17-XX-06-XX-02-0

Press-fit in .080 mounting hole



SPECIFICATIONS:

Shell Material: Brass Alloy 360, 1/2 Hard

Contact Material: Beryllium Copper Alloy 172, HT

Dimensions: Inches

Tolerances On: Lengths: ±.005

Diameters: ±.002

Angles: ±2°



ORDER CODE: XXXX - X - 17 - XX - XX - XX - 02 - 0

BASIC PART # →

SPECIFY SHELL FINISH: →

- 01 200 μ" TIN/LEAD OVER NICKEL
- ◆ 80 200 μ" TIN OVER NICKEL (RoHS)
- ◆ 15 10 μ" GOLD OVER NICKEL (RoHS)

SPECIFY CONTACT FINISH: →

- 01 200 μ" TIN/LEAD OVER NICKEL
- ◆ 80 200 μ" TIN OVER NICKEL (RoHS)
- ◆ 27 30 μ" GOLD OVER NICKEL (RoHS)

SELECT CONTACT:

#06 or #16 CONTACT (DATA ON PAGES 255 & 256)
 (For alternate contact choices, see group D on page 248)

