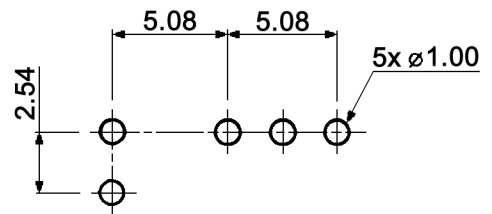
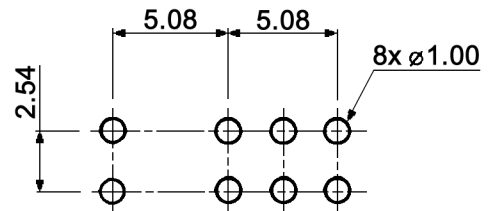


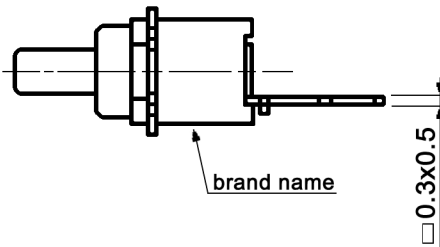
P.C. LAYOUT



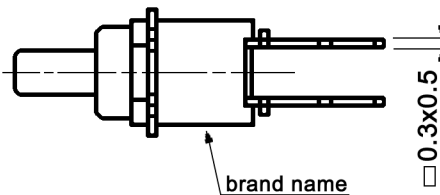
P.C. LAYOUT



FP 1 F-VM



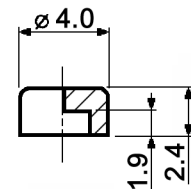
FP 2 F-VM



Specifications:

- Contact rating: max.: 0.4VA, 28V DC  
min.: 1µA, 20mV DC
- Contact resistance: 100mOhm max.
- Insulation resistance: 500MOhm min. at 250V DC
- Operating temperature: -40°C to +85°C
- Storage temperature: -40°C to +85°C
- Mechanical life: min. 30 000 cycles
- Soldering conditions: auto-soldering: max.: 250 +/-5°C, 7sec.  
max.: 270 +/-5°C, 5sec.

Plastic caps:



- black KF 4105
- grey KF 4107
- red KF 4109
- white KF 4110

- Mounting: on pc-board
- ESD resistance: 8kV min. (between lever and terminals)
- Switching function: on - mom (when looking at the brand name, the normally closed contact is on the left-hand side)

- Material: Contacts: phosphor bronze, gold plated  
Terminals: PC terminals, crimped, phosphor bronze, gold plated  
Case / lever: PES, UL94V-0, washable



Tolerances:	Date	Name
	01/09	dr
Temperatures	04/11	dr
Modifications	Date	Name

# FP 1 F-VM / FP 2 F-VM

**knitter-switch**

**20 25 71**

Page

1/1