

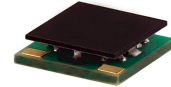
# Surface Mount <sup>top hat®</sup> Low Pass Filter

## ULP-320+

50Ω DC to 320 MHz

### The Big Deal

- Low Insertion loss, 1.5dB Typ.
- High rejection, > 40dB
- Sharp insertion loss roll-off
- Ultra miniature surface mount package



CASE STYLE: QA2224

### Product Overview

The ULP-320+ is a lowpass filter in a top hat package (size of 0.25" x 0.25") fabricated using SMT technology. Covering DC to 320 MHz band width, these units offer good matching within the passband and high rejection. This model uses a miniature high Q capacitors and chip inductors for high reliability. In addition it has repeatable performance across production lots and consistent performance across temperature.

### Key Features

Feature	Advantages
Low passband insertion loss	Passband insertion loss 1.5dB typical ensures low signal loss throughout the passband
Excellent stopband rejection	Rejection of 40 dB ensures unwanted spurious are eliminated
Excellent return loss at DC-320 MHz	This makes signal transmission with very less reflections and well-matched with the adjacent component used in the system
Small size, 0.25" x 0.25"	The Ultra miniature surface mount package enables the ULP-320+ to be used in compact designs.

#### Notes

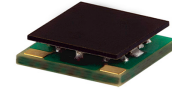
- A. Performance and quality attributes and conditions not expressly stated in this specification document are intended to be excluded and do not form a part of this specification document.  
B. Electrical specifications and performance data contained in this specification document are based on Mini-Circuit's applicable established test performance criteria and measurement instructions.  
C. The parts covered by this specification document are subject to Mini-Circuits standard limited warranty and terms and conditions (collectively, "Standard Terms"); Purchasers of this part are entitled to the rights and benefits contained therein. For a full statement of the Standard Terms and the exclusive rights and remedies thereunder, please visit Mini-Circuits' website at [www.minicircuits.com/MCLStore/terms.jsp](http://www.minicircuits.com/MCLStore/terms.jsp)



# Surface Mount <sup>top hat®</sup> Low Pass Filter

## ULP-320+

50Ω DC to 320 MHz



CASE STYLE: QA2224

### Features

- High rejection
- Sharp insertion loss roll-off
- Ultra miniature surface mount package

### Applications

- Wireless communications
- Receivers / Transformers
- Lab use

### Electrical Specifications at 25°C

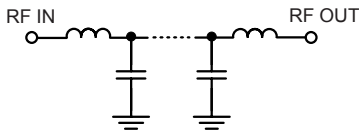
Parameter	F#	Frequency (MHz)	Min.	Typ.	Max.	Unit	
Pass Band	Insertion Loss	DC-F1	DC-320	—	1.5	2.0	dB
	Freq. Cut-Off	F2	345	—	3.0	—	dB
	VSWR	DC-F1	DC-320	—	1.4	—	:1
Stop Band	Rejection Loss	F3-F4	440-700	20	27	—	dB
		F4-F5	700-1600	40	47	—	dB
	VSWR	F3-F5	440-1600	—	20	—	:1

### Maximum Ratings

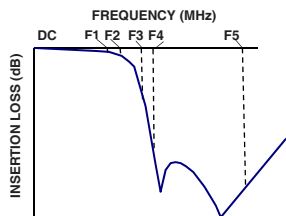
Operating Temperature	-40°C to 85°C
Storage Temperature	-55°C to 100°C
RF Power Input	1.6 W max.

Permanent damage may occur if any of these limits are exceeded.

### Functional Schematic



### Typical Frequency Response

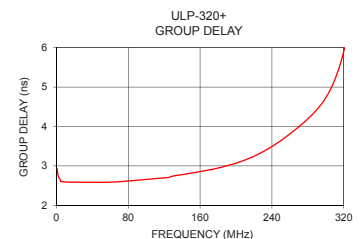
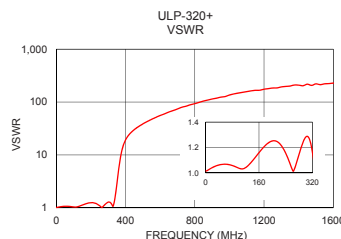
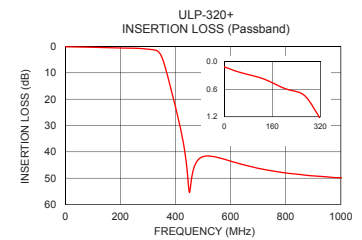
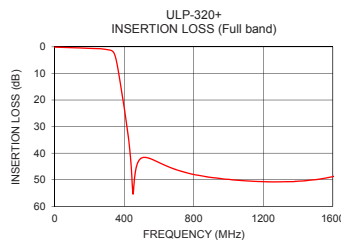


### Typical Performance Data at 25°C

Frequency (MHz)	Insertion Loss (dB)	VSWR (:1)	Frequency (MHz)	Group Delay (nsec)
1	0.11	1.02	1	2.42
10	0.13	1.03	2	2.25
100	0.31	1.04	5	2.10
150	0.43	1.13	10	2.09
320	1.26	1.17	50	2.08
345	2.92	2.14	80	2.12
346	3.10	2.27	100	2.16
375	12.67	10.73	120	2.19
395	20.88	17.81	140	2.28
416	30.08	23.24	160	2.35
440	44.90	28.17	180	2.45
450	55.27	29.97	200	2.57
475	44.06	34.32	210	2.65
510	41.61	40.34	230	2.86
600	43.55	55.67	250	3.14
700	46.26	73.86	270	3.49
1000	49.86	135.66	300	4.23
1250	50.81	184.02	310	4.69
1500	49.99	220.58	318	5.23
1600	48.82	227.43	320	5.40

### +RoHS Compliant

The +Suffix identifies RoHS Compliance. See our web site for RoHS Compliance methodologies and qualifications



### Notes

- Performance and quality attributes and conditions not expressly stated in this specification document are intended to be excluded and do not form a part of this specification document.
- Electrical specifications and performance data contained in this specification document are based on Mini-Circuits' applicable established test performance criteria and measurement instructions.
- The parts covered by this specification document are subject to Mini-Circuits standard limited warranty and terms and conditions (collectively, "Standard Terms"); Purchasers of this part are entitled to the rights and benefits contained therein. For a full statement of the Standard Terms and the exclusive rights and remedies thereunder, please visit Mini-Circuits' website at [www.minicircuits.com/MCLStore/terms.jsp](http://www.minicircuits.com/MCLStore/terms.jsp)



[www.minicircuits.com](http://www.minicircuits.com) P.O. Box 350166, Brooklyn, NY 11235-0003 (718) 934-4500 sales@minicircuits.com

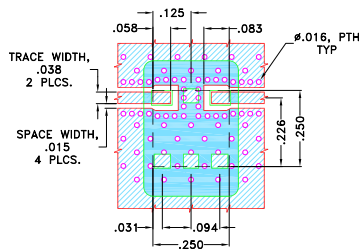
REV.A  
M161927  
ULP-320+  
EDU2395  
URJ  
170513  
Page 2 of 3

## Pad Connections

INPUT	1
OUTPUT	3
GROUND	2,4,5,6

**Demo Board MCL P/N: TB-894+**  
**Suggested PCB Layout (PL-484)**

SUGGESTED MOUNTING CONFIGURATION FOR  
 QA2224 CASE STYLE "06FL09" PIN CODE

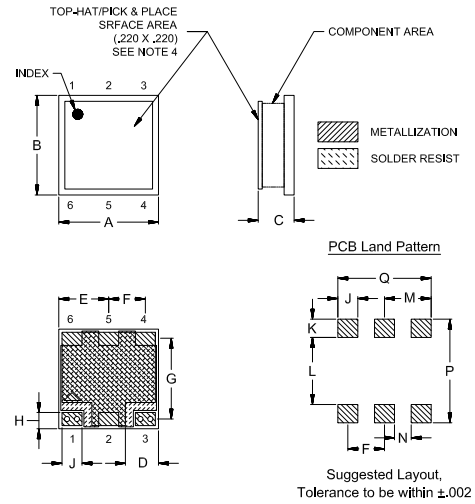


**NOTES:**

- TRACE WIDTH IS SHOWN FOR ROGERS (R04350B) WITH DIELECTRIC THICKNESS .020 $\pm$ .0015". COPPER: 1/2 OZ. EACH SIDE. FOR OTHER MATERIALS TRACE WIDTH MAY NEED TO BE MODIFIED.
- BOTTOM SIDE OF THE PCB IS CONTINUOUS GROUND PLANE.

- DENOTES PCB COPPER LAYOUT WITH SMOBC (SOLDER MASK OVER BARE COPPER)
- DENOTES COPPER LAND PATTERN FREE OF SOLDERMASK

## Outline Drawing



## Outline Dimensions (Inch / mm)

A	B	C	D	E	F	G	H	J	K
-	-	Min	Max	-	-	-	-	-	-
.250	.250	.075	.100	.075	.125	.092	.201	.041	.050
6.35	6.35	1.91	2.54	1.91	3.18	2.34	5.11	1.04	1.27
L	M	N	P	Q					
-	-	-	-	-					Wt.
.168	.117	.042	.260	.234					grams
4.27	2.97	1.07	6.60	5.94					0.25

**Notes**

- Performance and quality attributes and conditions not expressly stated in this specification document are intended to be excluded and do not form a part of this specification document.
- Electrical specifications and performance data contained in this specification document are based on Mini-Circuit's applicable established test performance criteria and measurement instructions.
- The parts covered by this specification document are subject to Mini-Circuits standard limited warranty and terms and conditions (collectively, "Standard Terms"); Purchasers of this part are entitled to the rights and benefits contained therein. For a full statement of the Standard Terms and the exclusive rights and remedies thereunder, please visit Mini-Circuits' website at [www.minicircuits.com/MCLStore/terms.jsp](http://www.minicircuits.com/MCLStore/terms.jsp)

