

1

2

3

4

5

6

D

X

X

P

1

3

A

6

X

X

0

9

L

F

SEE NOTE RoHS

PACKAGING SPECIFICATION

09-TRAY PACKAGING

MOUNTING OPTIONS

RV->LIF METAL PEG+F.SCREW LOCK UNC 4 40+METAL BRACKET

RL->LIF METAL PEG+ INSERT M3+METAL BRACKET

RX->LIF METAL PEG+ INSERT UNC 4-40 +METAL BRACKET

PLATING

6-500 Mating/Un-mating performance

SERIES

NO.OF CONTACTS

09,15,25,37

TYPE OF CONTACTS

P-PIN

TYPE OF TERMINATION

13-ANGLED SPILL

PITCH 2.54

FOOT PRINT 10.40 EUROPE

HEIGHT OF TERMINATION

A-2.00mm COMPATIBLE FOR 1.6mm PCB

RoHS INFORMATIONSDelta-D A/S MALE PIP CONNECTOR EUROPE VERSION

PRODUCT SPECIFICATION

See :- GS-12-433

PACKAGING SPECIFICATION

See :- GS-14-1157

FCI

FCIconnect.com

Copyright FCI

form: A3

mat'l. code				surface		tolerance		projection		product family									
SEE.TECH.SPEC				ISO 1302		ISO 406 ISO 1101				DELTA-D									
ltr		ecn no		dr		date		tolerances unless otherwise specified				title							
A		107-0167		AS		2007-12-04		angles		MM		DELTA-D A/S MALE PIP CONNECTOR							
B		108-0175		AS		2008-12-23		linear				EUROPE VERSION							
C		109-0162		AS		2009-08-17		0°±1°		scale									
								dr		ANISH.SALAM		2007-12-04		dwg no		sheet 1 of 2		size	
								engr		ANISH.SALAM		2009-08-17		C-DD-0103		A3		5	
								chr		ANISH.SLAM		2009-08-17		type		Product Customer		Drawing	
								appd		ANISH.SALAM		2009-08-17							
sheet index		revision sheet		C		C													
				1		2													

1

2

3

4

5

6

1

2

3

4

5

6

1

2

3

4

5

6

1

2

3

4

5

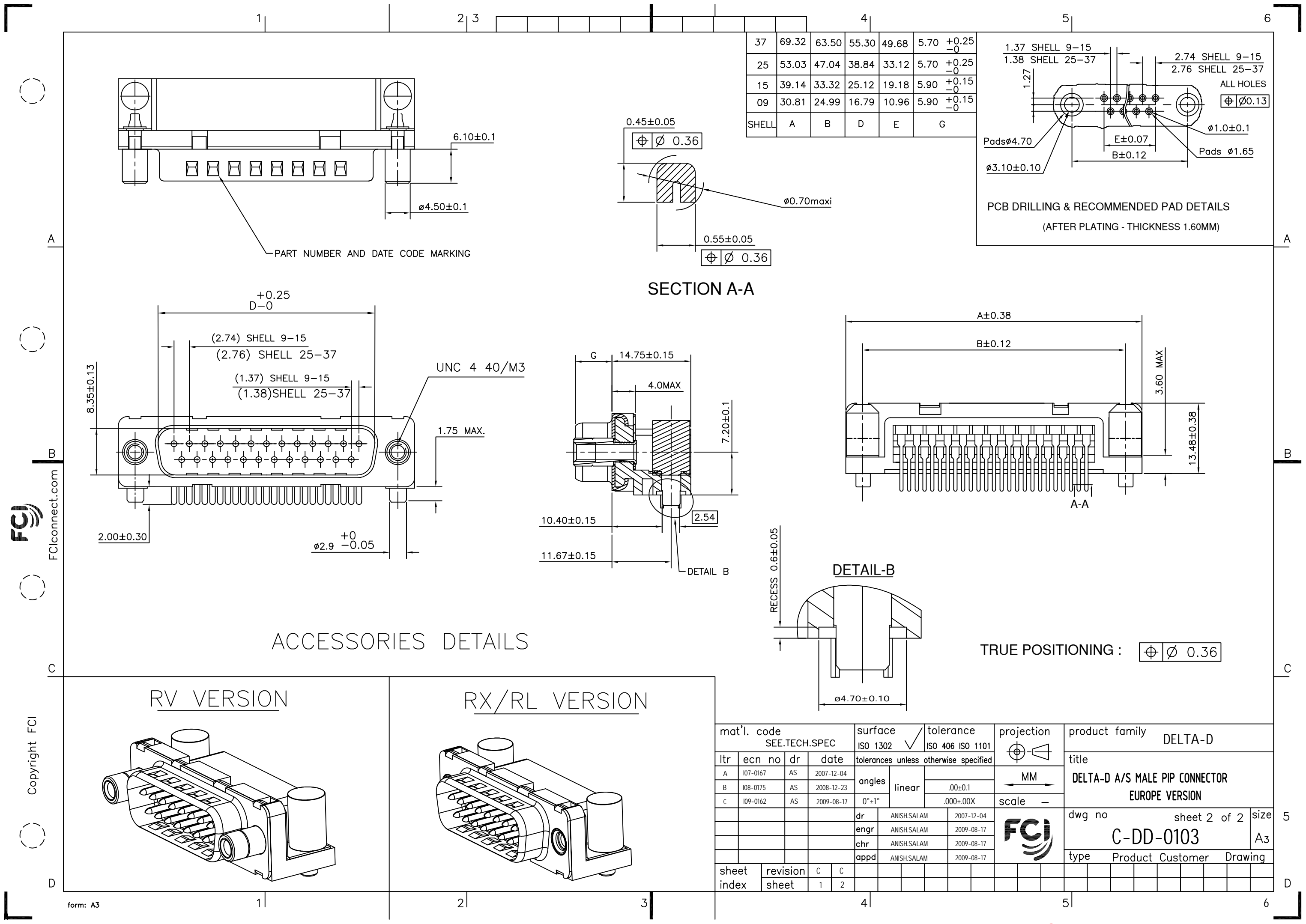
6

PDM: Rev:C

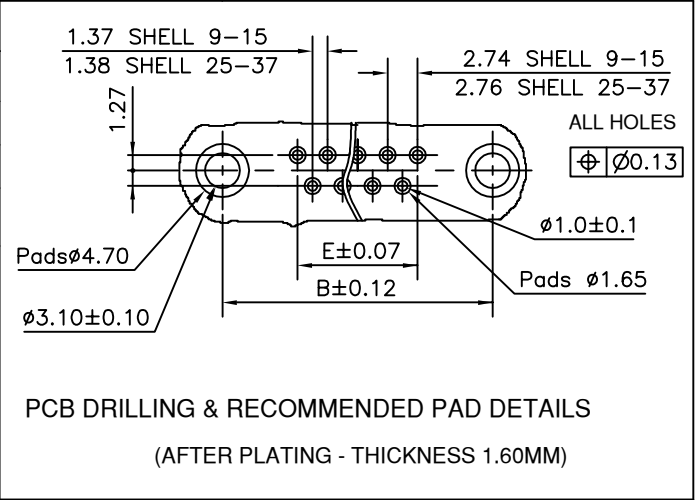
STATUS:Released

Printed: Jan 18, 2011

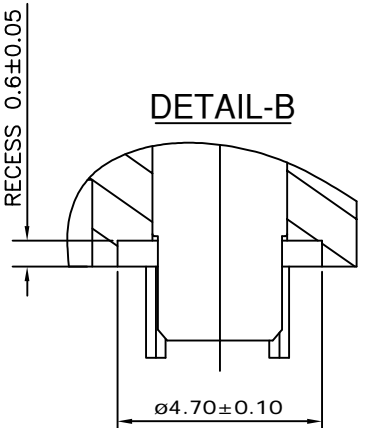
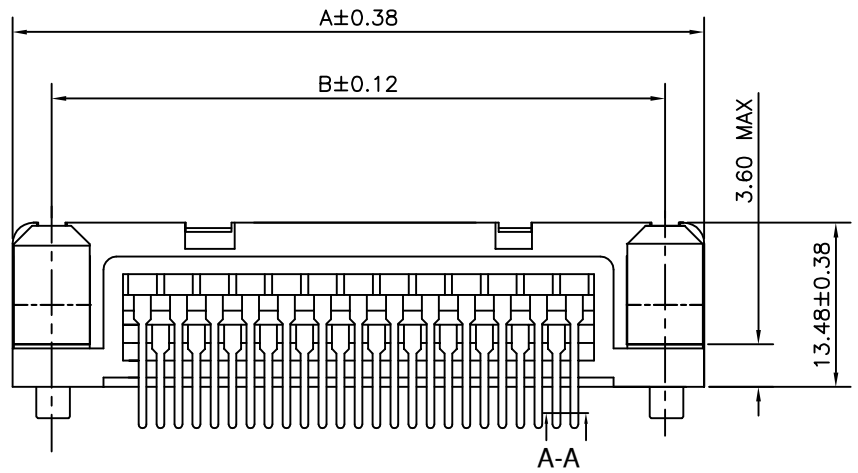
Downloaded from Arrow.com



37	69.32	63.50	55.30	49.68	5.70	+0.25 -0
25	53.03	47.04	38.84	33.12	5.70	+0.25 -0
15	39.14	33.32	25.12	19.18	5.90	+0.15 -0
09	30.81	24.99	16.79	10.96	5.90	+0.15 -0
SHELL	A	B	D	E	G	



SECTION A-A



TRUE POSITIONING : $\phi 0.36$

ACCESSORIES DETAILS

RV VERSION

RX/RL VERSION

mat'l. code SEE.TECH.SPEC				surface ISO 1302 ✓			tolerance ISO 406 ISO 1101		
ltr	ecn no	dr	date	tolerances unless otherwise specified					
A	I07-0167	AS	2007-12-04	angles 0°±1°	linear				
B	I08-0175	AS	2008-12-23			.00±0.1			
C	I09-0162	AS	2009-08-17			.000±.00X			
				dr	ANISH.SALAM		2007-12-04		
				engr	ANISH.SALAM		2009-08-17		
				chr	ANISH.SALAM		2009-08-17		
				appd	ANISH.SALAM		2009-08-17		
sheet index		revision	C	C					
		sheet	1	2					