

4HS154

PAGE 1 OF 1

RELEASE NO. PR-19579 REPLACES

M

DRAWING NUMBER

4

ISSUE

CHECK

REVISIONS

A	CO-75825	
S	A	15 JULY 93
B	CO-75870	
T S M		20 JUL 93
C	CO-94122	
T S M		17 MAR 99

CHECK

1 OCT 91

D A W

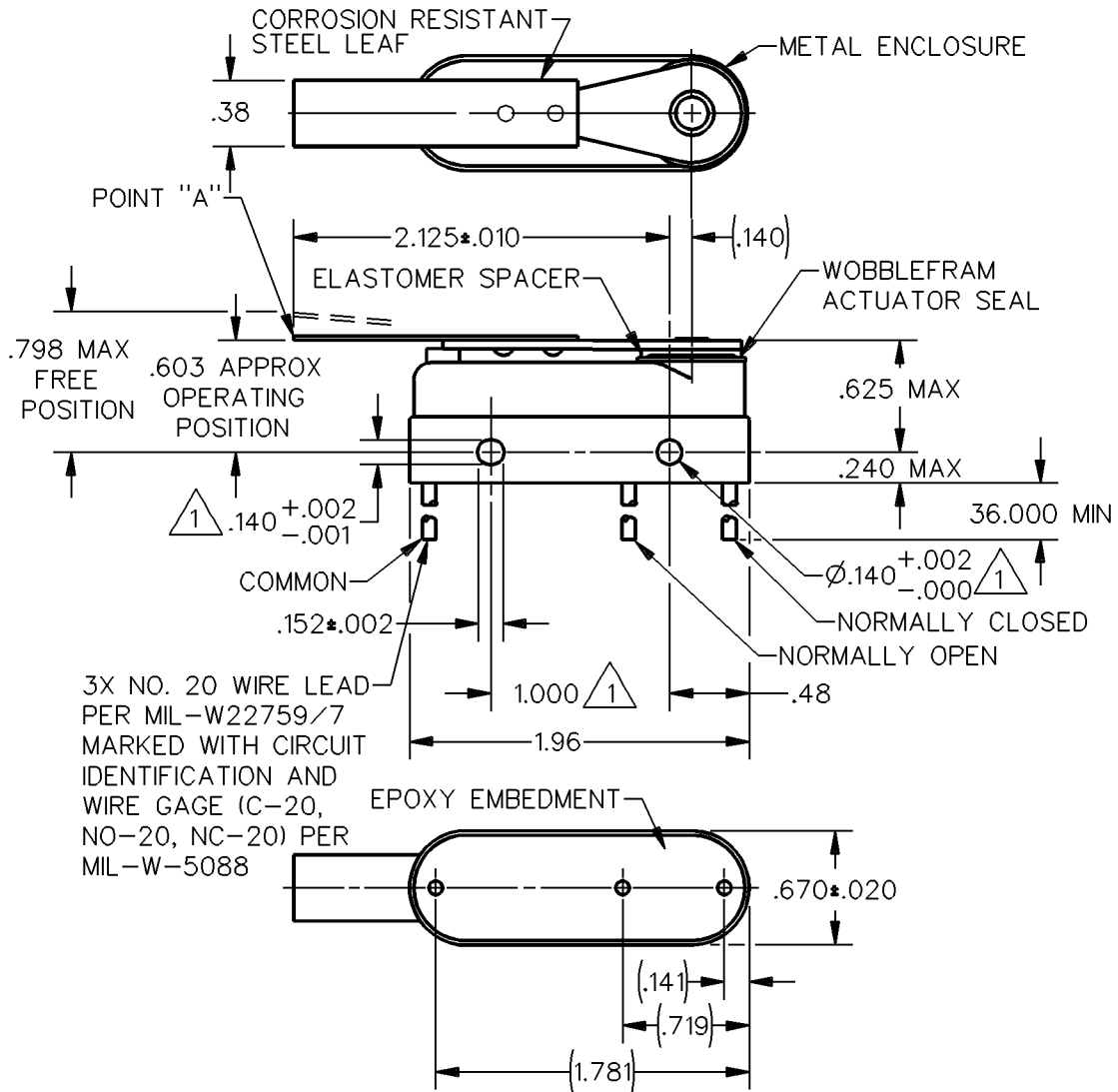
CHECK

26 SEP 91

DRAWN

T S M

FORMTEK

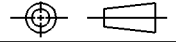


NOTES

- 1 MOUNTING HOLES WILL ACCEPT PINS OR SCREWS OF Ø.139 MAX ON 1.000±.002 CENTERS
- 2 - FOR USE IN AMBIENT TEMPERATURE RANGE FROM -65°F TO 250°F ANSI Y14.5M-1982 APPLIES

THIS DRAWING COVERS A PROPRIETARY ITEM AND IS THE PROPERTY OF MICRO SWITCH, A DIVISION OF HONEYWELL. THIS DRAWING IS NOT TO BE COPIED OR USED WITHOUT THE APPROVAL OF MICRO SWITCH.

THIRD ANGLE PROJECTION



CHARACTERISTICS AT POINT "A"	ELECTRICAL DATA			SCALE	FULL	DO NOT SCALE PRINT
	OPERATING FORCE — — — 4-20 OZ	CONTACT ARRANGEMENT S P D T			UNLESS OTHERWISE SPECIFIED TOLERANCES ARE	
RELEASE FORCE — — — 2 OZ MIN	LINE VOLTAGE	INDUCTIVE LOAD	RESISTIVE LOAD	ONE PLACE (.0)	±.030	
DIFFERENTIAL TRAVEL — — — .100 MAX	28 VDC	8 AMP	25 AMP	TWO PLACE (.00)	±.015	
DO NOT OVERTRAVEL MORE THAN --- .062	(SEA LEVEL-1000,000 FT)			THREE PLACE (.000)	±.005	
	125 VAC	1 AMP	.5 AMP	ANGLES	±	
	(SEA LEVEL-70,000 FT)			WEIGHT	6.5 OZ MAX	