

REV	DESCRIPTION	DATE	APPRVD
B	ADD -23	6-22-00	PG
C	ADD "X" OPTION	4-12-05	PG

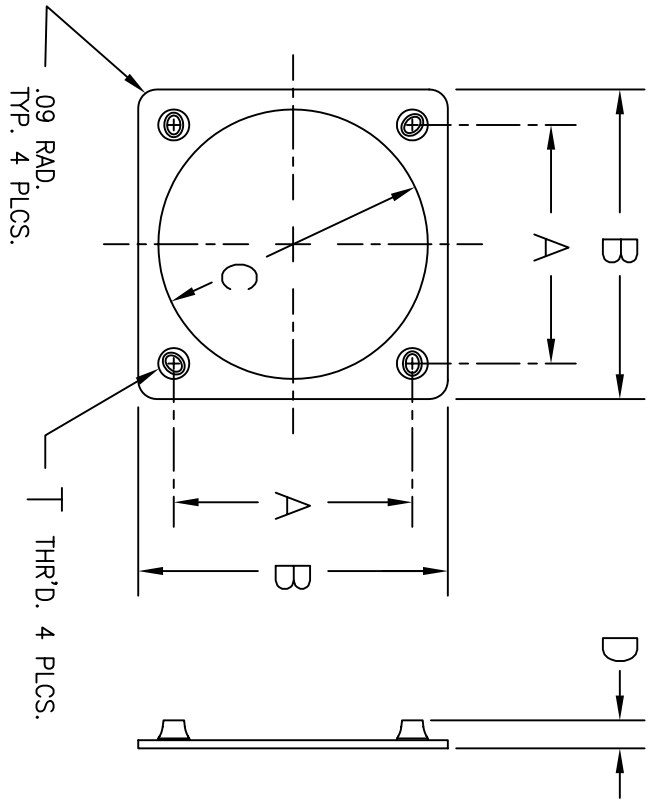
PART NO.	SHELL SIZE	A ±.003	B ±.015	C +.015 -.000	D	T THRD. UNJC-3B
AT340-8	8	.594	.880	.570	.106/.166	4-40
AT340-10	10	.719	1.005	.700	.106/.166	4-40
AT340-12	12	.812	1.098	.820	.106/.166	4-40
AT340-14	14	.906	1.192	.945	.106/.166	4-40
AT340-16	16	.969	1.255	1.070	.106/.166	4-40
AT340-18	18	1.062	1.348	1.196	.106/.166	4-40
AT340-20	20	1.156	1.500	1.320	.106/.166	4-40
AT340-22	22	1.250	1.625	1.440	.106/.166	4-40
AT340-23	23	1.375	1.750	1.570	.106/.166	4-40
AT340-24	24	1.375	1.750	1.570	.123/.183	6-32
AT340-25	25	1.500	1.891	1.658	.123/.183	6-32

SPECIFICATIONS :

1. RETAINER MATERIAL - .040 ±.003 THICK 2024-T3 ALUMINUM ALLOY. PER QQ-A-250/4 OR .040 ±.003 THICK 6061-T6 ALUMINUM ALLOY PER QQ-A-250/11.
2. RETAINER FINISH - ALODINE PER MIL-C-5541. OPTIONAL FINISH - ALODINE PLUS TWO (2) COATS OF POLYAMIDE PRIMER PER MIL-P-23377, ADD "P" TO THE PART NUMBER.
3. NUT, SELF-LOCKING - CORROSION-RESISTING STEEL, CADMIUM PLATED PER QQ-P-416 FOLLOWED BY A SOLID DRY FILM LUBRICANT PER MIL-L-46010. NUTS MEET MIL-N-45938/7 SPECIFICATIONS. OPTIONAL NUT FINISH- PASSIVATED CORROSION-RESISTING STEEL WITH DRY FILM LUBRICANT, ADD "X".

NOTE :

ALL DIMENSIONS ARE SYMMETRICAL ABOUT CENTERLINES.



UNLESS OTHERWISE SPECIFIED DIMENSIONS ARE IN INCHES TOLERANCES ARE:		CONTRACT NO.	
ANGLES ±	FRACTIONS ±	PREPARED	DVH
DECIMALS XX ±	XXX ±	APPROVED	STARKS
		RELEASE	1/88
NEXT ASSY	USED ON	SIZE	CODE IDENT NO.
APPLICATION		B	0A554
		DRIVING NO.	AT340
		REV	C
		SCALE: NONE	SHR 1 OF 1



NUT RING CONNECTOR