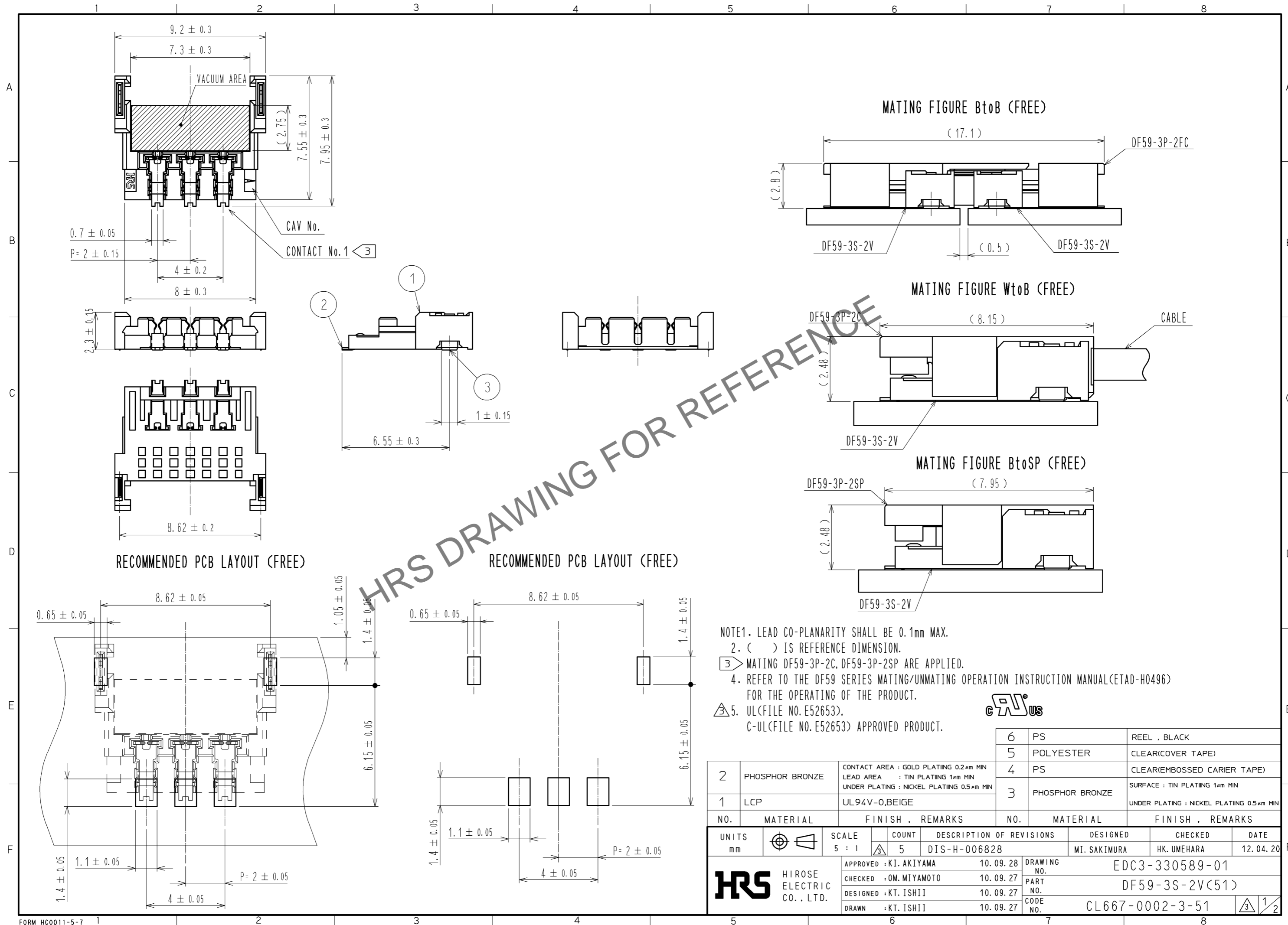


Jun.1.2024 Copyright 2024 HIROSE ELECTRIC CO., LTD. All Rights Reserved.  
 In case of consideration for using Automotive equipment / device which demand high reliability, kindly contact our sales window correspondents.

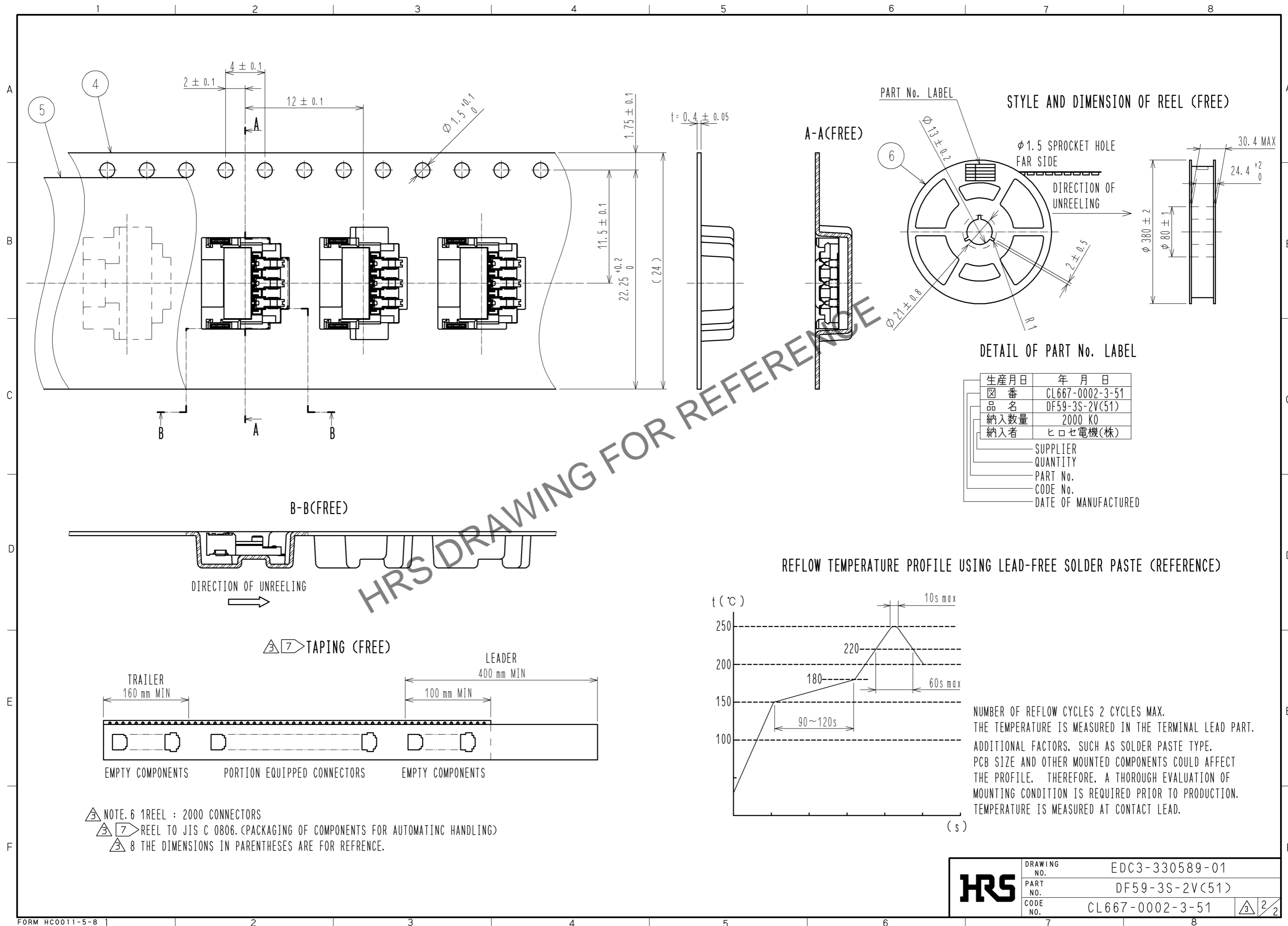


NOTE1. LEAD CO-PLANARITY SHALL BE 0.1mm MAX.  
 2. ( ) IS REFERENCE DIMENSION.  
 ③ MATING DF59-3P-2C, DF59-3P-2SP ARE APPLIED.  
 4. REFER TO THE DF59 SERIES MATING/UNMATING OPERATION INSTRUCTION MANUAL(ETAD-H0496) FOR THE OPERATING OF THE PRODUCT.  
 ⑤ UL(FILE NO. E52653), C-UL(FILE NO. E52653) APPROVED PRODUCT.



2	PHOSPHOR BRONZE	CONTACT AREA : GOLD PLATING 0.2μm MIN LEAD AREA : TIN PLATING 1μm MIN UNDER PLATING : NICKEL PLATING 0.5μm MIN	6	PS	REEL , BLACK	
1	LCP	UL94V-0,BEIGE	5	POLYESTER	CLEAR(COVER TAPE)	
			4	PS	CLEAR(EMBOSSED CARRIER TAPE)	
			3	PHOSPHOR BRONZE	SURFACE : TIN PLATING 1μm MIN UNDER PLATING : NICKEL PLATING 0.5μm MIN	
NO.	MATERIAL	FINISH , REMARKS	NO.	MATERIAL	FINISH , REMARKS	
UNITS	mm	SCALE	5 : 1	COUNT	5	
		DESCRIPTION OF REVISIONS	DESIGNED	MI. SAKIMURA	CHECKED	HK. UMEHARA
		DATE	12.04.20			
		APPROVED : KI. AKIYAMA	10.09.28	DRAWING NO. EDC3-330589-01		
		CHECKED : OM. MIYAMOTO	10.09.27	PART NO. DF59-3S-2V(51)		
		DESIGNED : KT. ISHII	10.09.27	CODE NO. CL667-0002-3-51		
		DRAWN : KT. ISHII	10.09.27			

Jun.1.2024 Copyright 2024 HIROSE ELECTRIC CO., LTD. All Rights Reserved.  
In case of consideration for using Automotive equipment / device which demand high reliability, kindly contact our sales window correspondents.



<b>HRS</b>	DRAWING NO.	EDC3-330589-01
	PART NO.	DF59-3S-2V(51)
	CODE NO.	CL667-0002-3-51
		2/2