



Connectors > Connector Accessories > Light Pipes



Form Factor: **QSFP**

Number of Lightpipes: **2**

Lightpipe Product Type: **Lightpipe**

Lightpipe Configuration: **Dual Round**

Features

Product Type Features

Form Factor	QSFP
Lightpipe Product Type	Lightpipe

Configuration Features

Number of Lightpipes	2
Lightpipe Configuration	Dual Round

Usage Conditions

Operating Temperature Range	-55 – 105 °C[-67 – 221 °F]
-----------------------------	----------------------------

Industry Standards

UL Flammability Rating	UL 94V-2
------------------------	----------

Packaging Features

Packaging Method	Package
------------------	---------

Product Compliance

[For compliance documentation, visit the product page on TE.com>](#)

EU RoHS Directive 2011/65/EU	Compliant
EU ELV Directive 2000/53/EC	Compliant
China RoHS 2 Directive MIIT Order No 32, 2016	No Restricted Materials Above Threshold
EU REACH Regulation (EC) No. 1907/2006	Current ECHA Candidate List: JUNE 2024 (241)

Candidate List Declared Against: JUNE 2024 (241)
Does not contain REACH SVHC

Halogen Content

Not Low Halogen - contains Br or Cl > 900 ppm.

Solder Process Capability

Not applicable for solder process capability

Product Compliance Disclaimer

This information is provided based on reasonable inquiry of our suppliers and represents our current actual knowledge based on the information they provided. This information is subject to change. The part numbers that TE has identified as EU RoHS compliant have a maximum concentration of 0.1% by weight in homogenous materials for lead, hexavalent chromium, mercury, PBB, PBDE, DBP, BBP, DEHP, DIBP, and 0.01% for cadmium, or qualify for an exemption to these limits as defined in the Annexes of Directive 2011/65/EU (RoHS2). Finished electrical and electronic equipment products will be CE marked as required by Directive 2011/65/EU. Components may not be CE marked. Additionally, the part numbers that TE has identified as EU ELV compliant have a maximum concentration of 0.1% by weight in homogenous materials for lead, hexavalent chromium, and mercury, and 0.01% for cadmium, or qualify for an exemption to these limits as defined in the Annexes of Directive 2000/53/EC (ELV). Regarding the REACH Regulation, the information TE provides on SVHC in articles for this part number is based on the latest European Chemicals Agency (ECHA) 'Guidance on requirements for substances in articles' posted at this URL: <https://echa.europa.eu/guidance-documents/guidance-on-reach>

Compatible Parts



TE Part # CAT-C11-H50111
QSFP-Four SFP+ I/O Cable Assembly
30 AWG



TE Part # 1888810-2
EMI/Dust Cover,XFP And QSFP



TE Part # 2110819-1
QSFP+ Enh EVERCLEAR PT Conn



TE Part # 1-2053638-6
C/A, QSFP, 0.5M, P1-P2,
UNEQUALIZED



TE Part # CAT-C11-H5011
QSFP-Four SFP+ I/O Cable Assembly
28 AWG



TE Part # CAT-C11-H5011142
QSFP to QSFP I/O Cable Assembly: 33
AWG



TE Part # 2202165-4
QSFP TO QSFP, 26AWG, FDR, 4.0
METER



TE Part # 2202165-5
QSFP TO QSFP, 26AWG, FDR, 5.0
METER



TE Part # 2829040-2
QSFP IB EDR, 33AWG, 1.0M



TE Part # 2829040-4
QSFP IB EDR, 30AWG, 1.0M



TE Part # 2829040-6
QSFP IB EDR, 30AWG, 2.0M

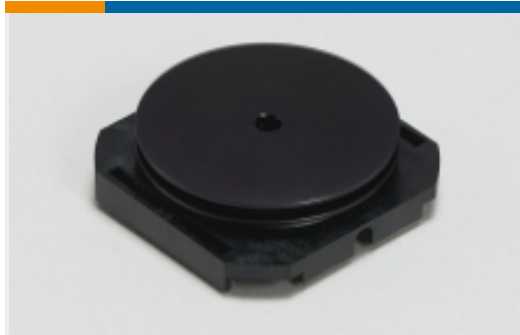


TE Part # 2829040-7
QSFP IB EDR, 26AWG, 2.0M



TE Part # 2829040-8
QSFP IB EDR, 26AWG, 3.0M

Also in the Series | QSFP/QSFP+



Heat Sinks(1)



Light Pipes(8)

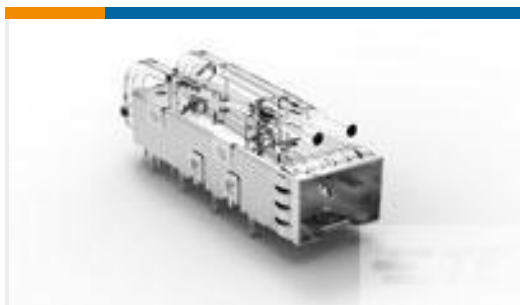


Pluggable I/O Cable Assemblies(13)

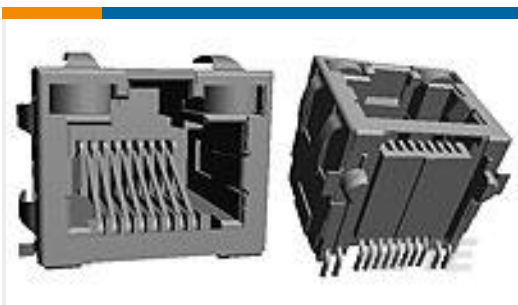


Pluggable IO Connectors & Cages(154)

Customers Also Bought



TE Part #2007254-1
SFP+ 1x1 Cage Assembly, Light Pipe



TE Part #2178415-1
MJ,RJ45,SMT,SHLD



TE Part #5-1440007-3
TSC-124D3H,000



TE Part #1888674-1
Cage Assy, QSFP, Through Bezel



TE Part #4-2176094-4
RP 2A 0.25W 340K 0.1% 25PPM 1K RL



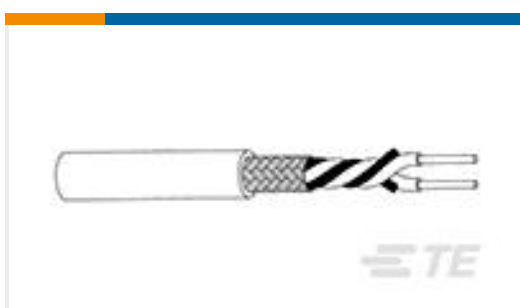
TE Part #4-2176341-7
CRGCQ 0805 68K 1%



TE Part #2176327-1
CRGP 0805 10R 1%



TE Part #1625893-2
5W SM M/OX 5% 39K



TE Part #469411-000
0024A0024-9X



TE Part #504021-1
KIT,CPL RECEPT,2.5MMBNT,ST



Documents

Product Drawings

[Light Pipe double,Thru bezel,QSFP](#)

English

CAD Files

[3D PDF](#)

3D

Customer View Model

[ENG_CVM_CVM_2007309-1_A_c-2007309-1-a.2d_dxf.zip](#)

English

Customer View Model

[ENG_CVM_CVM_2007309-1_A_c-2007309-1-a.3d_igs.zip](#)

English

Customer View Model

[ENG_CVM_CVM_2007309-1_A_c-2007309-1-a.3d_stp.zip](#)

English

By downloading the CAD file I accept and agree to the [Terms and Conditions](#) of use.

Product Specifications

[Product Specification](#)

English

Instruction Sheets

[Instruction Sheet \(U.S.\)](#)

English