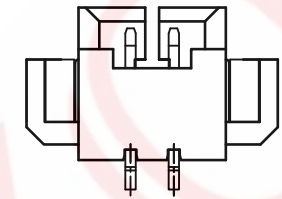
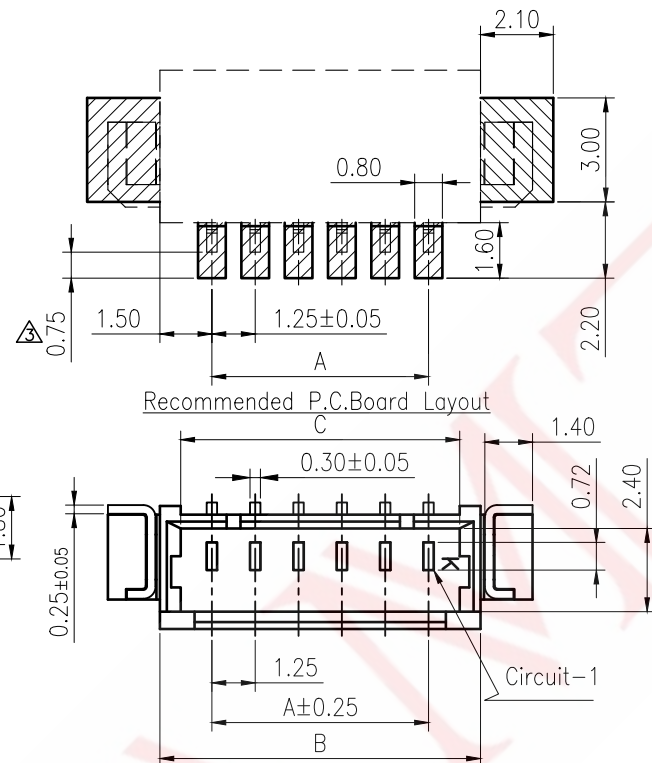
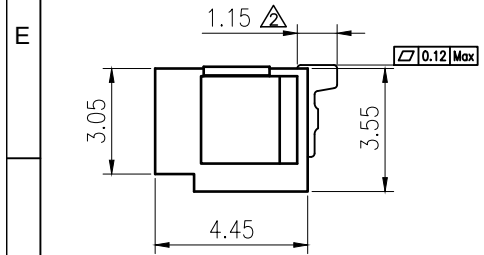
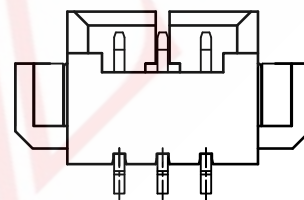


SAMZO REAC/ROHS

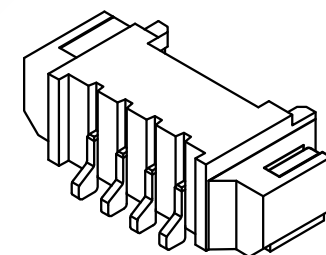
REV	ECN NO	DESCRIPTION	DESIGN	APPROVAL	DATE
A1	NEW	Replace frame			2013.06.21



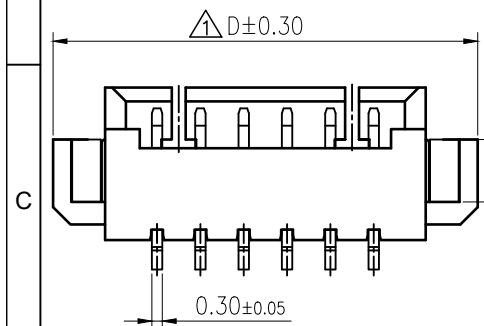
2 Circuits



3 Circuits



- ◆ SPECIFICATIONS
- Current rating: 1A AC, DC
 - Voltage rating: 125V AC, DC
 - Temperature range: -25°C ~ +85°C
 - Insulation resistance: 100MΩ Min.
 - Withstanding voltage: 250V AC/ minute.
 - Contact resistance: 20mΩ Max.



PIN NO.	DIMENSIONS			
	A	B	C	ΔD
02P	1.25	4.25	3.05	7.25
03P	2.50	5.50	4.30	8.50
04P	3.75	6.75	5.55	9.75
05P	5.00	8.00	6.80	11.00
06P	6.25	9.25	8.05	12.25
07P	7.50	10.50	9.30	13.50
08P	8.75	11.75	10.55	14.75
09P	10.00	13.00	11.80	16.00
10P	11.25	14.25	13.05	17.25
11P	12.50	15.50	14.30	18.50
12P	13.75	16.75	15.55	19.75
13P	15.00	18.00	16.80	21.00
14P	16.25	19.25	18.05	22.25
15P	17.50	20.50	19.30	23.50
16P	18.75	21.75	20.55	24.75

A. SERISE: 6E-MX
 B. SPACING: H-1.25mm
 C. MOUNTING: D-WT
 D. STANDARD: A-WAFER
 E: PIN: 02-2P (02-16P)
 F: CODE: 0-REGULAR



ITEM	DESCRIPTION	MATERIAL	QTY	FINISH/COLOR	GENERAL TOLERANCE				
1	针脚	黄铜	N	高温亮锡	≥0~2<	±0.15	SCALE	1:1	
2	主体	LCP	1	XXX	≥2~5<	±0.25	UNIT	mm	
3	左焊片	黄铜	1	高温亮锡	≥0~2<	±0.15	THE COPYRIGHT BELONGS TO SAMZO PARTS (CHINA) CO., LTD. PLEASE USE THE MATERIAL AFTER SAMZO PARTS AGREE TO AUTHORIZE. THE FINAL RIGHT OF INTERPRETATION BELONGS TO SAMZO PARTS. WWW.KKK-JP.COM		
4	右焊片	黄铜	1	高温亮锡	DESIGN	WANGUIFA			2018.06.12
					CHECKED	ZHENGUILAN			2018.06.12
					APPROVED	LILIANJIANG	2018.06.14	≥5	±0.35

FIRST VIEW

SAMZO COMPONENTS
 Electronic switch and connector manufacturer

TITLE: MX1.25-AWB-WT
 DWG NO: 6EHD-P61
 PART NO: 6EHD130716
 MODEL NO: 6E H D A - ** - 0
 NAME: WT B CONNECTOR