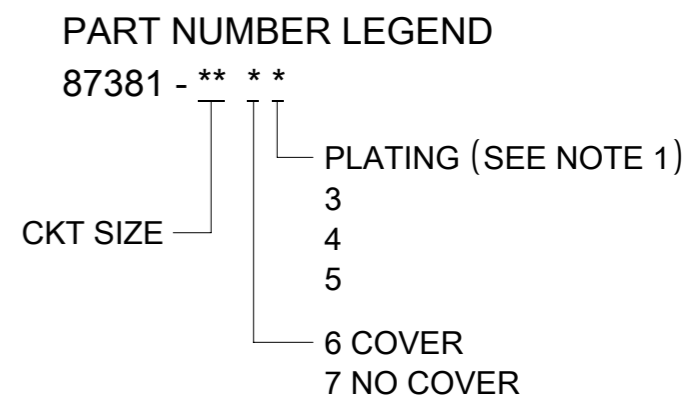


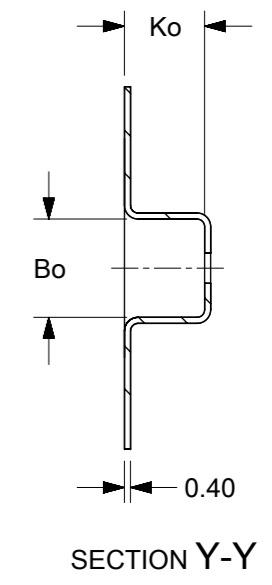
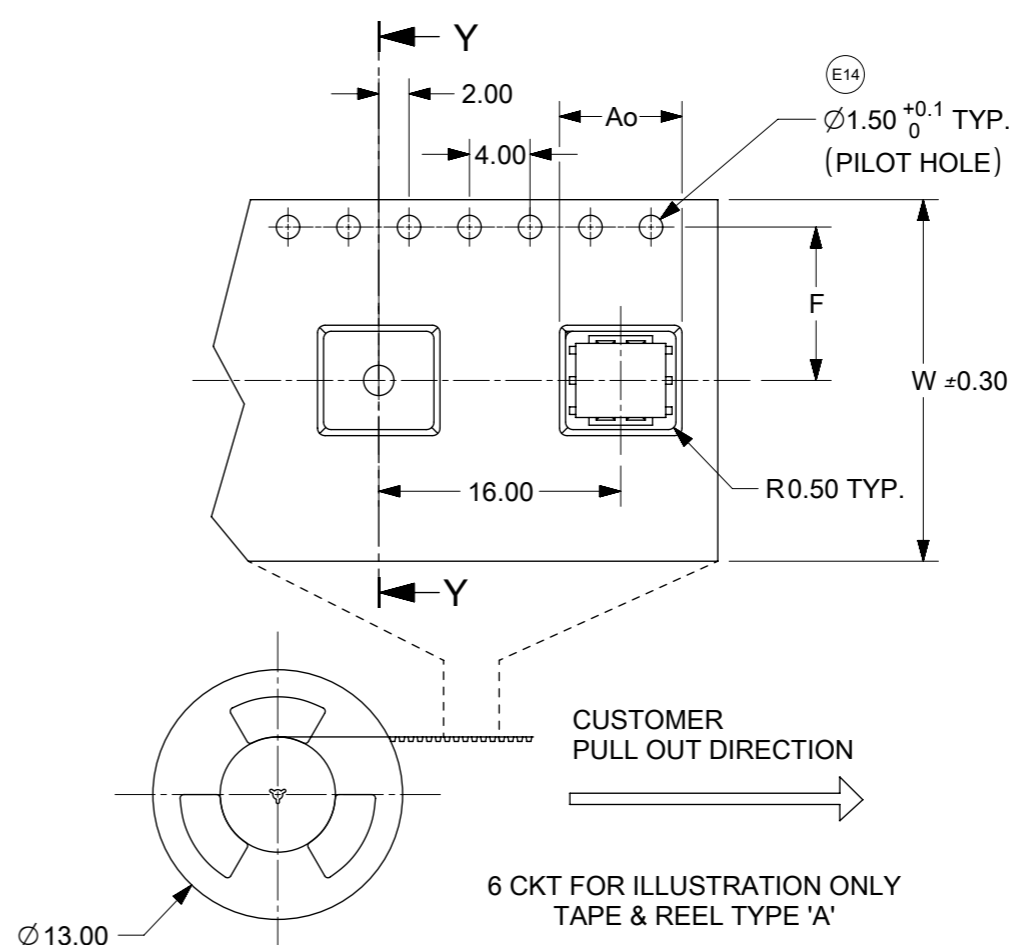
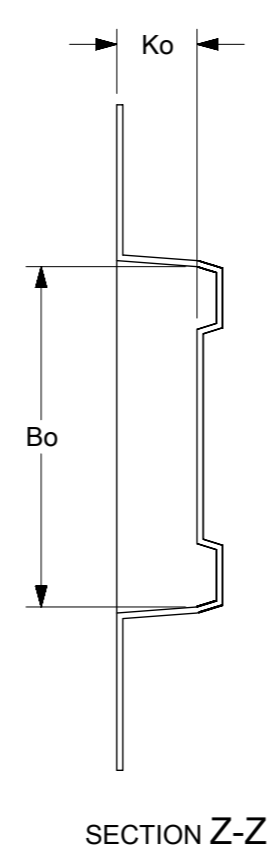
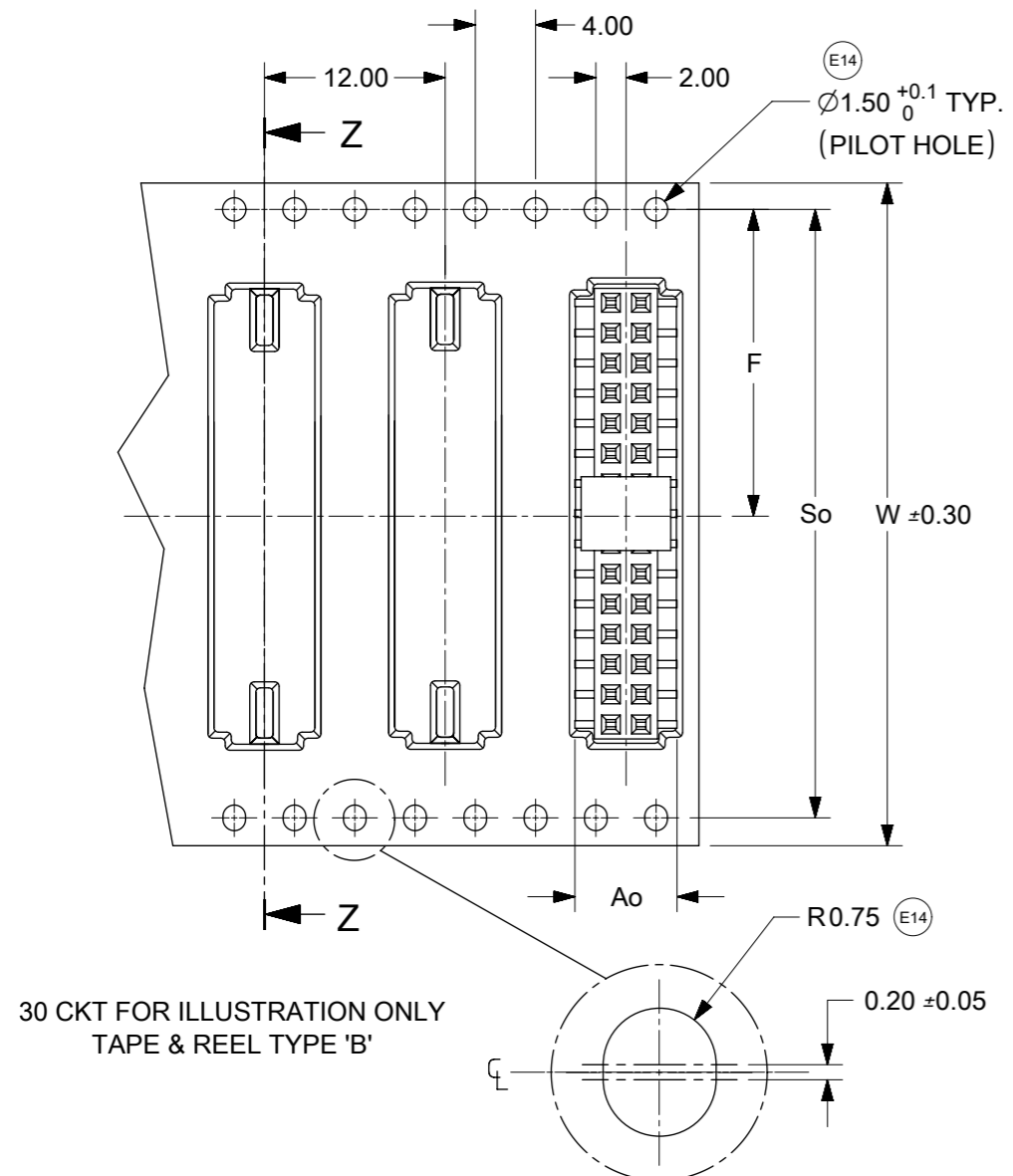
PART NUMBER W/CAP IN TUBE	CKT. SIZE	⊕ DIM A	⊕ DIM B	DIM C
87381-06**	6	6.00	4.00	0.55
87381-08**	8	8.00	6.00	1.55
87381-10**	10	10.00	8.00	2.55
87381-12**	12	12.00	10.00	3.55
87381-14**	14	14.00	12.00	4.55
87381-16**	16	16.00	14.00	5.55
87381-18**	18	18.00	16.00	6.55
87381-20**	20	20.00	18.00	7.55
87381-22**	22	22.00	20.00	8.55
87381-24**	24	24.00	22.00	9.55
87381-26**	26	26.00	24.00	10.55
87381-28**	28	28.00	26.00	11.55
87381-30**	30	30.00	28.00	12.55
87381-32**	32	32.00	30.00	13.55
87381-34**	34	34.00	32.00	14.55
87381-36**	36	36.00	34.00	15.55
87381-38**	38	38.00	36.00	16.55
87381-40**	40	40.00	38.00	17.55
87381-42**	42	42.00	40.00	18.55
87381-44**	44	44.00	42.00	19.55
87381-46**	46	46.00	44.00	20.55
87381-48**	48	48.00	46.00	21.55
87381-50**	50	50.00	48.00	22.55

- NOTES:
- PLATING FINISH:
 - 3 - 0.76µm MIN. GOLD IN CONTACT AREA 1.27µm MIN. TIN IN SOLDER TAIL AREA BOTH OVER 1.27µm MIN. NICKEL OVERALL
 - 4 - 0.38µm MIN. GOLD IN CONTACT AREA 1.27µm MIN. TIN IN SOLDER TAIL AREA BOTH OVER 1.27µm MIN. NICKEL OVERALL
 - 5 - 0.05µm MIN. GOLD FLASH IN CONTACT AREA 1.90µm MIN. TIN IN SOLDER TAIL AREA BOTH OVER 1.27µm MIN. NICKEL OVERALL
 - 12 CKT SIZE SHOWN FOR ASSY ILLUSTRATION ONLY. (SEE CHART FOR ALL PART SIZES), 6 CKT & 30 CKT ILLUSTRATED FOR TAPE/REEL VERSION ON SHT 2.
 - PRODUCT SPECIFICATION PS-87380 APPLIES.
 - COPLANARITY OF SOLDER TAILS ARE TO BE MEASURED BY RESTING THE PART ON A FLAT GAUGE SURFACE ↑+0.05 UPWARDS AND ↓-0.05 DOWNWARDS.
 - TUBE PACKAGING STANDARD.
 - COVER IS OPTIONAL, SEE LEGEND.
 - PARTS SHALL BE PACKED IN MOISTURE BARRIER BAG.
 - REFER SHT 3 FOR P/N: 87381-6000 T&R ILLUSTRATION.

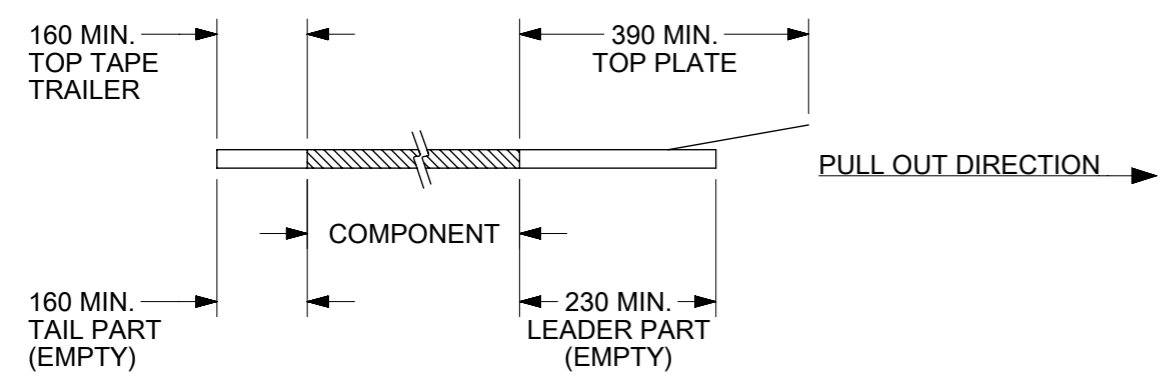


THIS DRAWING CONTAINS INFORMATION THAT IS PROPRIETARY TO MOLEX ELECTRONIC TECHNOLOGIES, LLC AND SHOULD NOT BE USED WITHOUT WRITTEN PERMISSION

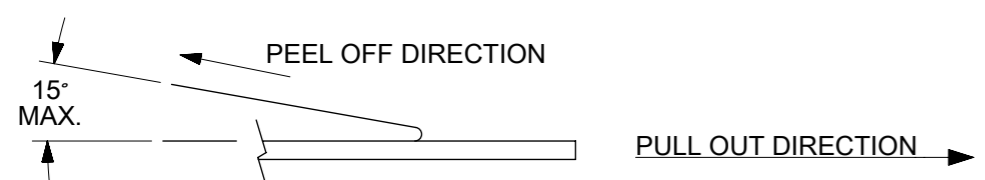
DIMENSION UNITS	SCALE	CURRENT REV DESC: ADDED PRT NO.	molex		
mm	NTS				
GENERAL TOLERANCES (UNLESS SPECIFIED)			MGRID, TOP ENTRY RECEPT. 4.50MM HT., SMT		
			PRODUCT CUSTOMER DRAWING		
4 PLACES ±	MM	INCH	DOCUMENT NUMBER		DOC TYPE
3 PLACES ±			SD-87381-XX6X		PSD
2 PLACES ± 0.2			DOC PART	001	REVISION
1 PLACE ±			E14		
0 PLACES ±					
ANGULAR TOL ± 3.0°					
DRAFT WHERE APPLICABLE MUST REMAIN WITHIN DIMENSIONS		THIRD ANGLE PROJECTION	DRAWING	SERIES	MATERIAL NUMBER
			A3-SIZE	87381	SEE CHART
			CUSTOMER	GENERAL MARKET	
			SHEET NUMBER		
			1 OF 4		



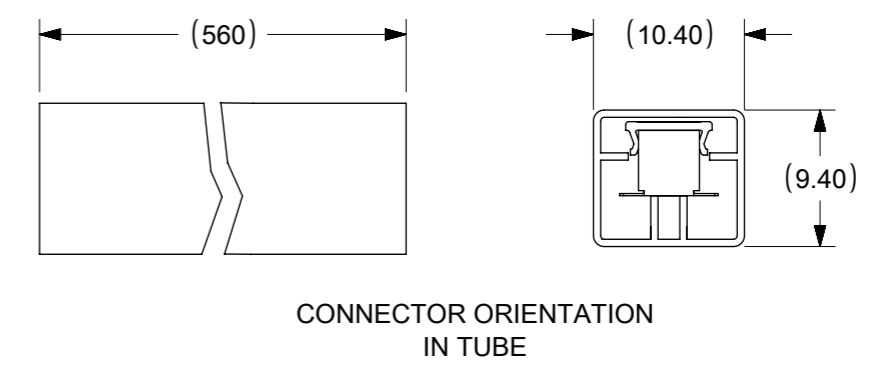
NOTES:
1. LEADER AND TRAILER TAPE



2. PEELING OFF FORCE OF THE TOP TAPE: 20-80gf.
(PEELING DIRECTION AS SHOWN IN FOLLOWING FIGURE)



3. PACKAGING STANDARD IS AS PER EIA-481.
4. TAPE & REEL QUANTITY = SEE TABLE



THIS DRAWING CONTAINS INFORMATION THAT IS PROPRIETARY TO MOLEX ELECTRONIC TECHNOLOGIES, LLC AND SHOULD NOT BE USED WITHOUT WRITTEN PERMISSION		CURRENT REV DESC: ADDED PRT NO.		molex	
GENERAL TOLERANCES (UNLESS SPECIFIED)		EC NO: 606422			
DIMENSION UNITS	SCALE	DRWN: GGUNAGI 2018/04/27		PRODUCT CUSTOMER DRAWING	
mm	NTS	CHK'D: GJEEVANSURES 2018/10/23		DOCUMENT NUMBER	
4 PLACES ±		APPR: ISHWARG 2018/10/23		SD-87381-XX6X	
3 PLACES ±		INITIAL REVISION:		DOC TYPE	
2 PLACES ± 0.2		DRWN: JAMES 1998/01/08		PSD	
1 PLACE ±		APPR: SQUEK 1999/04/26		DOC PART	
0 PLACES ±		ANGULAR TOL ± 3.0°		001	
DRAFT WHERE APPLICABLE MUST REMAIN WITHIN DIMENSIONS		THIRD ANGLE PROJECTION		REVISION	
		DRAWING		E14	
		SERIES		SHEET NUMBER	
		A3-SIZE		2 OF 4	
		87381		MATERIAL NUMBER	
		SEE CHART		CUSTOMER	
		GENERAL MARKET			

CKT SIZE	PART No. IN TUBE	PART NO. WITH CAP IN TAPE/REEL	W	So	^{E14} Ao	F	Bo	Ko	T & R QUANTITY PER REEL
6	87381-0664	87381-9002	24	-	7.00	11.50	6.50	5.30	500
8	87381-0864	87381-9003	24	-	7.00	11.50	8.50	5.30	600
10	87381-1064	87381-9005	24	-	7.00	11.50	10.50	5.30	680
12	87381-1264	^{E14} 87381-9007	24	-	7.00	11.50	12.50	5.30	600
14	87381-1464	87381-9006	32	28.40	7.20	14.20	14.50	5.30	750
16	87381-1664	87381-9004	32	28.40	7.20	14.20	16.50	5.30	800
18	87381-1864	87381-1800	32	28.40	7.20	14.20	18.50	5.30	750
20	87381-2063	87381-2000	32	28.40	7.20	14.20	20.50	5.30	800
22	87381-2264	87381-2200	44	40.40	7.20	20.20	22.50	5.30	500
30	87381-3064	87381-3000	44	40.40	7.20	20.20	30.50	5.30	500
32	87381-3264	87381-3200	44	40.40	7.20	20.20	32.50	5.30	^{E14} 500
34	87381-3464	87381-3400	56	52.40	7.20	26.20	34.50	5.30	500
40	87381-4063	-	56	52.40	8.40	26.20	40.40	5.60	^{E13} 750
40	-	87381-4000	56	52.40	8.40	26.20	40.40	5.60	400
44	87381-4464	87381-4400	56	52.40	7.20	26.20	44.50	5.30	500
46	87381-4664	87381-4600	72	68.40	7.20	34.20	46.50	5.30	750
50	87381-5063	87381-5030	72	68.40	7.20	34.20	50.50	5.30	500
50	87381-5064	87381-5000	72	68.40	7.20	34.20	50.50	5.30	500

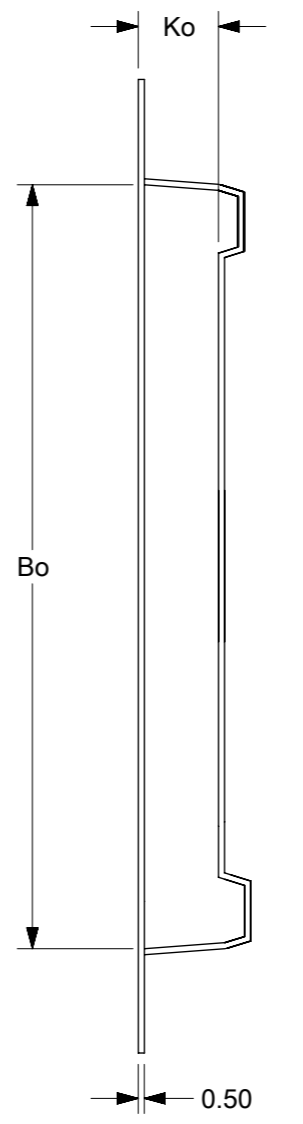
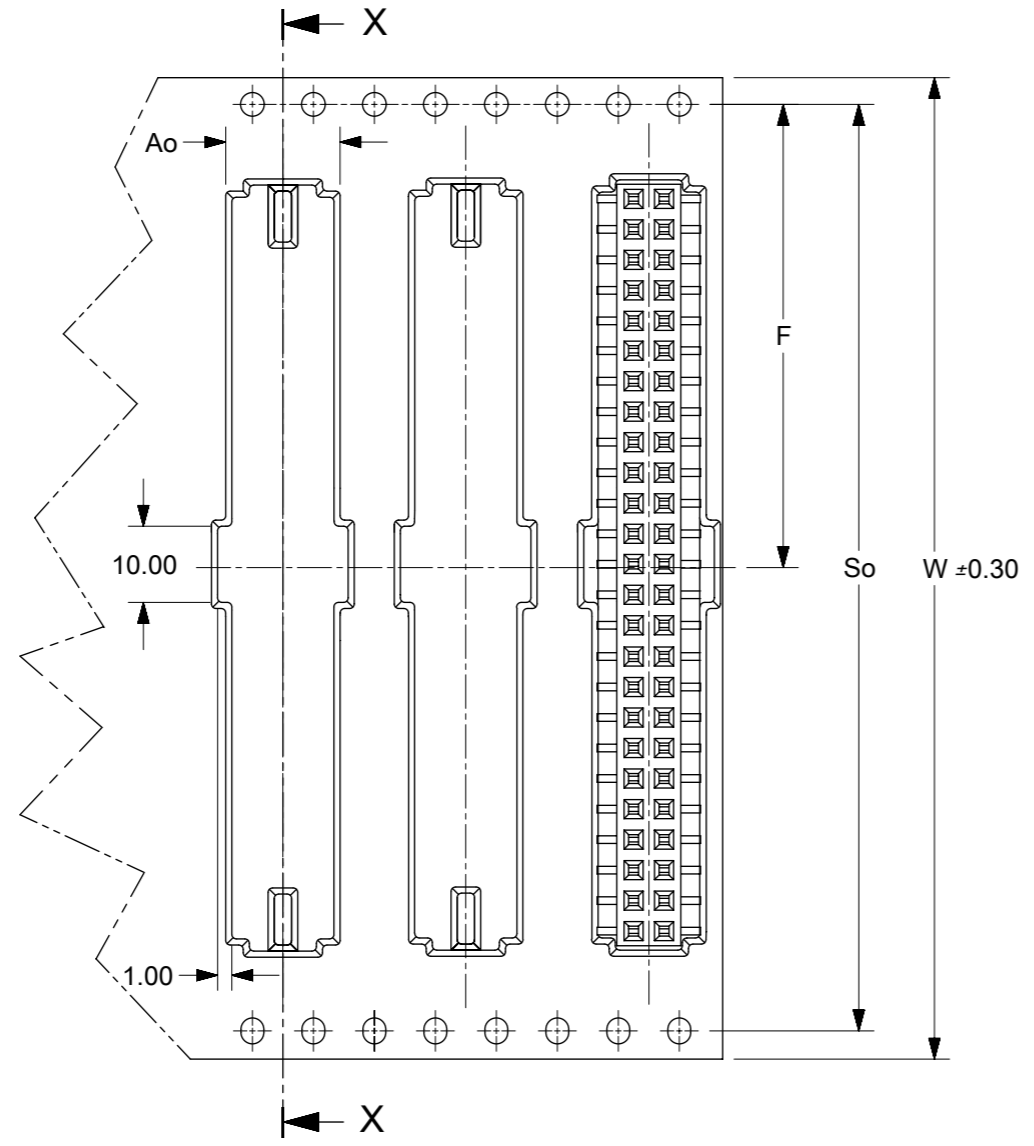
THIS DRAWING CONTAINS INFORMATION THAT IS PROPRIETARY TO MOLEX ELECTRONIC TECHNOLOGIES, LLC AND SHOULD NOT BE USED WITHOUT WRITTEN PERMISSION

DIMENSION UNITS	SCALE	CURRENT REV DESC: ADDED PRT NO.		molex	
mm	NTS				
GENERAL TOLERANCES (UNLESS SPECIFIED)		EC NO: 606422		MGRID, TOP ENTRY RECEPT. 4.50MM HT., SMT	
	MM	INCH	DRWN: GGUNAGI	2018/04/27	
4 PLACES	±	±	CHK'D: GJEEVANSURES	2018/10/23	
3 PLACES	±	±	APPR: ISHWARG	2018/10/23	
2 PLACES	±	0.2	PRODUCT CUSTOMER DRAWING		
1 PLACE	±	±	INITIAL REVISION:		DOCUMENT NUMBER
0 PLACES	±	±	DRWN: JAMES	1998/01/08	SD-87381-XX6X
ANGULAR TOL	±	3.0°	APPR: SQUEK	1999/04/26	PSD 001 E14
DRAFT WHERE APPLICABLE MUST REMAIN WITHIN DIMENSIONS		THIRD ANGLE PROJECTION	DRAWING	SERIES	MATERIAL NUMBER
			A3-SIZE	87381	SEE CHART
					CUSTOMER
					GENERAL MARKET
					SHEET NUMBER
					3 OF 4

9 8 7 6 5 4 3 2 1

CKT SIZE	PART No. WITHOUT CAP IN TUBE	PART NO. WITHOUT CAP IN TAPE / REEL	W	So	Ao	F	Bo	Ko	T & R TYPE (SHT 2)	T&R QTY PER REEL
50	87381-5074	87381-6000 \triangle_8	72	68.40	6.80	34.20	50.50	8.00	B	500

\triangle_8 ILLUSTRATION FOR P/N: 87381-6000
50 CKT IN T&R W/O CAP



SECTION X-X

THIS DRAWING CONTAINS INFORMATION THAT IS PROPRIETARY TO MOLEX ELECTRONIC TECHNOLOGIES, LLC AND SHOULD NOT BE USED WITHOUT WRITTEN PERMISSION											
DIMENSION UNITS		SCALE		CURRENT REV DESC: ADDED PRT NO.							
mm		NTS									
GENERAL TOLERANCES (UNLESS SPECIFIED)				EC NO: 606422				MGRID, TOP ENTRY RECEPT. 4.50MM HT., SMT			
				DRWN: GGUNAGI 2018/04/27							
				CHK'D: GJEEVANSURES 2018/10/23				PRODUCT CUSTOMER DRAWING			
				APPR: ISHWARG 2018/10/23							
				INITIAL REVISION:				DOCUMENT NUMBER: SD-87381-XX6X DOC TYPE: PSD DOC PART: 001 REVISION: E14			
				DRWN: JAMES 1998/01/08							
				APPR: SQUEK 1999/04/26							
ANGULAR TOL ± 3.0°				DRAFT WHERE APPLICABLE MUST REMAIN WITHIN DIMENSIONS		THIRD ANGLE PROJECTION		DRAWING		SHEET NUMBER	
						A3-SIZE		SERIES: 87381		MATERIAL NUMBER: SEE CHART	
								CUSTOMER: GENERAL MARKET		SHEET NUMBER: 4 OF 4	

8 7 6 5 4 3 2 1