



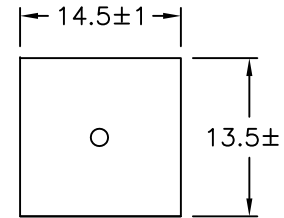
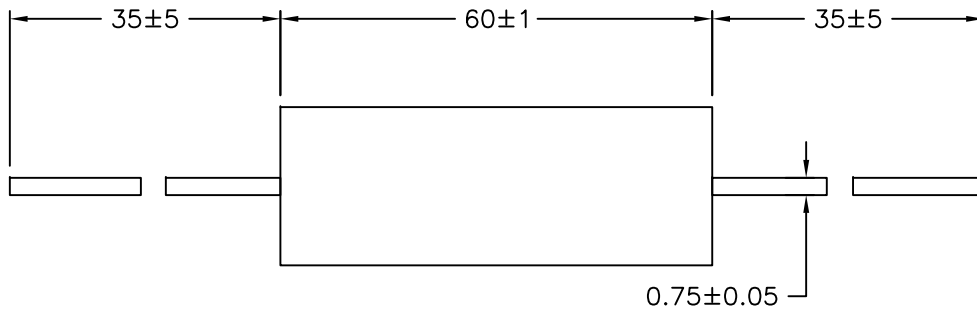
ALL RIGHTS RESERVED. NO PORTION OF THIS PUBLICATION, WHETHER IN WHOLE OR IN PART CAN BE REPRODUCED WITHOUT THE EXPRESS WRITTEN CONSENT OF SPC TECHNOLOGY.

SPC-F005.DWG

REVISIONS

DOC. NO. SPC-F005 * Effective: 7/8/02 * DCP No: 1398

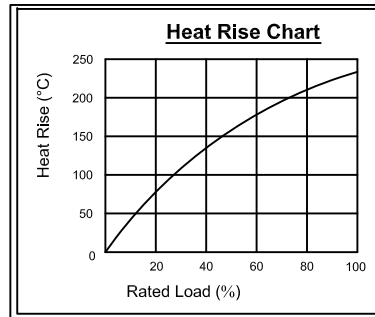
DCP #	REV	DESCRIPTION	DRAWN	DATE	CHECKD	DATE	APPRVD	DATE
1991	A	RELEASED	JN	05/15/09	JWM	05/15/09	JWV	05/15/09



Performance Specification

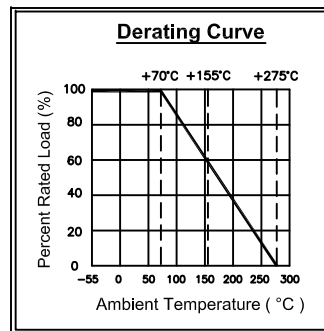
- Self extinguishing
- Excellent flame and moisture resistance
- Extremely small sturdy and mechanical safe
- Product Type: Wire-wound Resistor
- Power Rating: 20 Watts
- Resistance Tolerance: ±5%

Mfg. P/N	Resistance (Ohms)
MCPRW020JW100B00	10
MCPRW020JW101B00	100
MCPRW020JW151B00	150
MCPRW020JW27JB00	2.7
MCPRW020JW33JB00	3.3
MCPRW020JW39JB00	3.9
MCPRW020JW43JB00	4.3
MCPRW020JW47JB00	4.7
MCPRW020JW560B00	56
MCPRW020JW56JB00	5.6
MCPRW020JW680B00	68
MCPRW020JW681B00	680
MCPRW020JW68JB00	6.8
MCPRW020JW750B00	75
MCPRW020JW751B00	750
MCPRW020JW820B00	82
MCPRW020JW821B00	820
MCPRW020JW82JB00	8.2



Performance Specification

- Temperature coefficient: <20Ω: ±400PPM/°C; ≥20: ±350PPM/°C
- Short-time overload: $\Delta R/R \leq \pm(5.0\% + 0.05\Omega)$, with no evidence of mechanical damage.
- Dielectric withstanding voltage: No evidence of flashover, mechanical damage, arcing or insulation breakdown.
- Terminal strength: No evidence of mechanical damage.
- Solderability: Min. 95% coverage
- Temperature cycling: $\Delta R/R \leq \pm(2.0\% + 0.05\Omega)$, with no evidence of mechanical damage.
- Humidity (Steady State): $\Delta R/R \leq \pm(5.0\% + 0.05\Omega)$, with no evidence of mechanical damage.
- Load life in humidity: For Wire-wound range, the $\Delta R/R$ is ±5%
For Power film range, <100KΩ, the $\Delta R/R$ is ±5%
For Power film range, ≥100KΩ, the $\Delta R/R$ is ±10%
- Load Life: For Wire-wound range, the $\Delta R/R$ is ±5%
For Power film range, <100KΩ, the $\Delta R/R$ is ±5%
For Power film range, ≥100KΩ, the $\Delta R/R$ is ±10%
- Resistance to solderability heat: $\Delta R/R \pm(1.0\% + 0.05\Omega)$ with no evidence of mechanical damage.



DISCLAIMER:
ALL STATEMENTS AND TECHNICAL INFORMATION CONTAINED HEREIN ARE BASED UPON INFORMATION AND/OR TESTS WE BELIEVE TO BE ACCURATE AND RELIABLE. SINCE CONDITIONS OF USE ARE BEYOND OUR CONTROL, THE USER SHALL DETERMINE THE SUITABILITY OF THE PRODUCT FOR THE INTENDED USE AND ASSUME ALL RISK AND LIABILITY WHATSOEVER IN CONNECTION THEREWITH.

TOLERANCES:
UNLESS OTHERWISE SPECIFIED, DIMENSIONS ARE FOR REFERENCE PURPOSES ONLY.

DRAWN BY:	DATE:
Jason Nash	05/15/09
CHECKED BY:	DATE:
JWM	05/15/09
APPROVED BY:	DATE:
JWM	05/15/09

DRAWING TITLE: 20 watt (Wire-wound) Cement Fixed Resistors			
SIZE	DWG. NO.	ELECTRONIC FILE	REV
A	Ta-1175	Ta-1175.DWG	A
SCALE:	NTS	U.O.M.: INCHES	SHEET: 1 OF 1