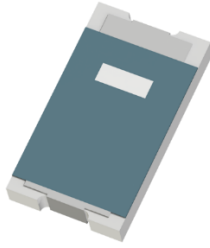


**Surface Mount Termination**  
**8 Watts, 50Ω**



**Features:**

- DC – 6.0 GHz
- Power 8 W (AVG)
- Peak to average Ratio 12dB
- RoHS Compliant
- Al<sub>2</sub>O<sub>3</sub> Ceramic
- Non-Nichrome Resistive Element
- Low VSWR
- 100% Tested
- Small Size 1206

**Description:**

The C8A50Z4B is high performance DC-6GHz, 8 Watts (AVG) Alumina (Al<sub>2</sub>O<sub>3</sub>) surface mount termination with a peak to average power rating of 12dB. The termination is intended as a cost competitive solution well suited to all frequency bands in Telecom, COTS Mil-Aero and Test and Measurement. The high power handling makes the part ideal for terminating high power 90 degree XINGER ® couplers and for use in microstrip circuits. The termination is also RoHS compliant!

**General Specifications:**

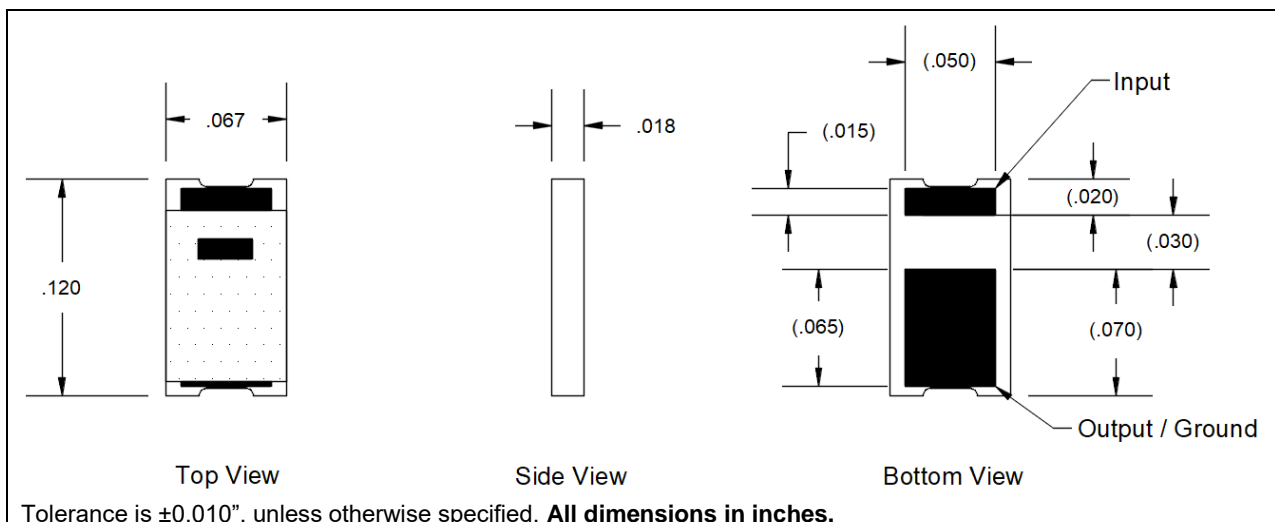
<b>Resistive Element</b>	Thick film
<b>Substrate</b>	Al <sub>2</sub> O <sub>3</sub> Ceramic
<b>Terminal Finish</b>	Matte Tin over Nickel Barrier
<b>Operating Temperature</b>	-50 to +150°C (see de rating chart)

**Electrical Specifications:**

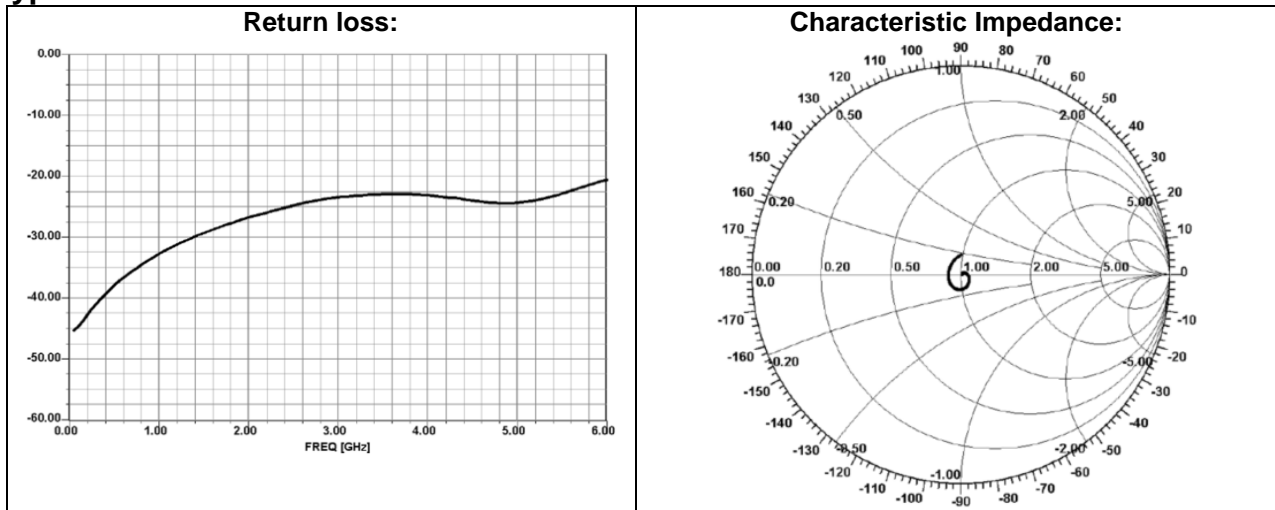
<b>Resistance Value:</b>	50 Ohms ± 2%
<b>Power:</b>	8 Watts (Avg Watts @ 100°C)
<b>Frequency Range:</b>	DC – 6.0 GHz
<b>Return Loss</b>	>19 dB

Specification based on unit properly installed using suggested mounting instructions and a 50 ohm nominal impedance. **Specifications subject to change.**

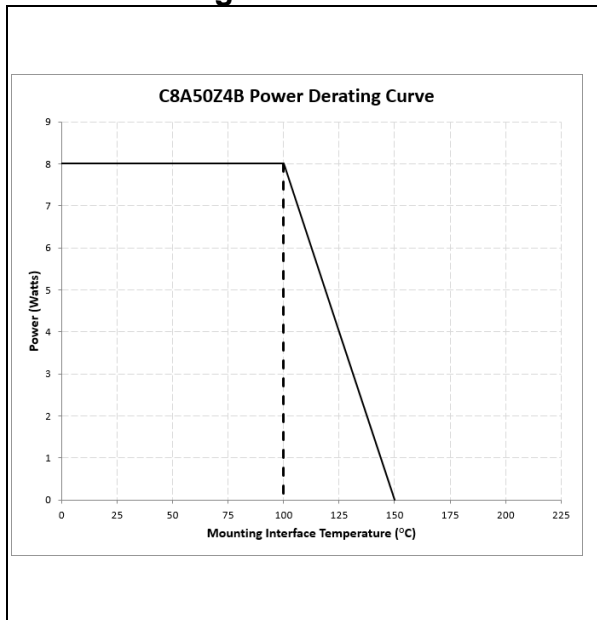
**Mechanical Outline:**



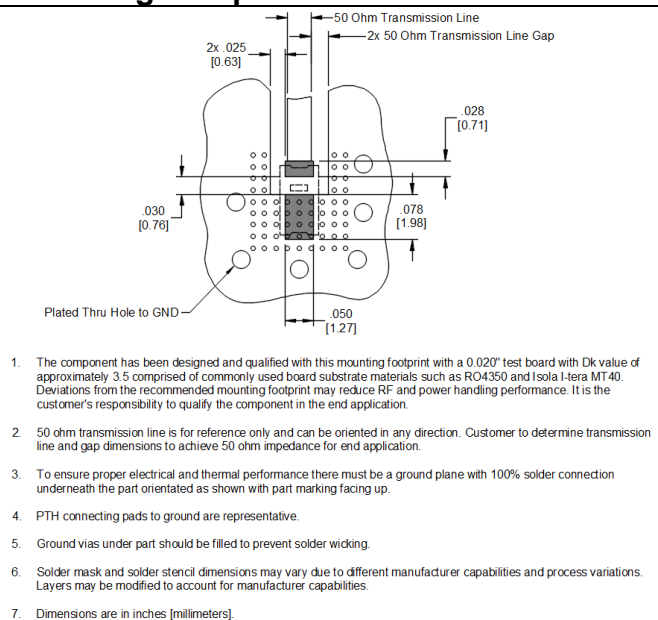
**Typical Performance:**



**Power de-rating:**

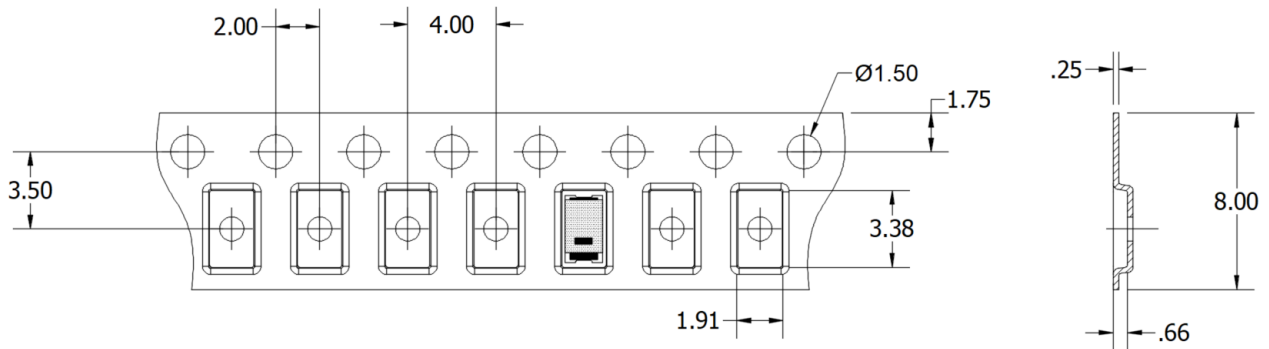


**Mounting Footprint:**



**Packaging and Ordering Information:**

Parts are oriented in tape and reel as shown below.



Dimensions are in Millimeters

Direction of Part Feed (Unloading)

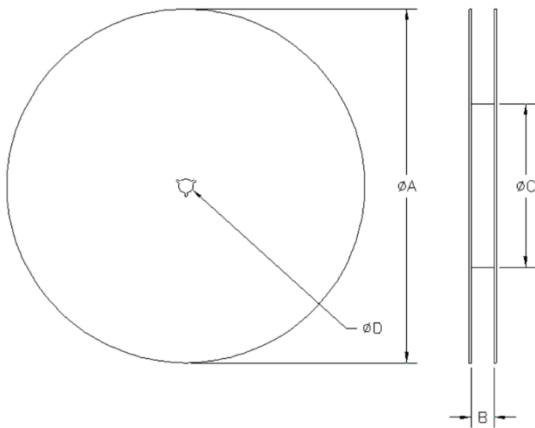


TABLE 1	
REEL DIMENSIONS (mm)	
ØA	177.8
B	8.0
ØC	50.8
ØD	13.0

Contact us:  
[rf&s\\_support@ttm.com](mailto:rf&s_support@ttm.com)