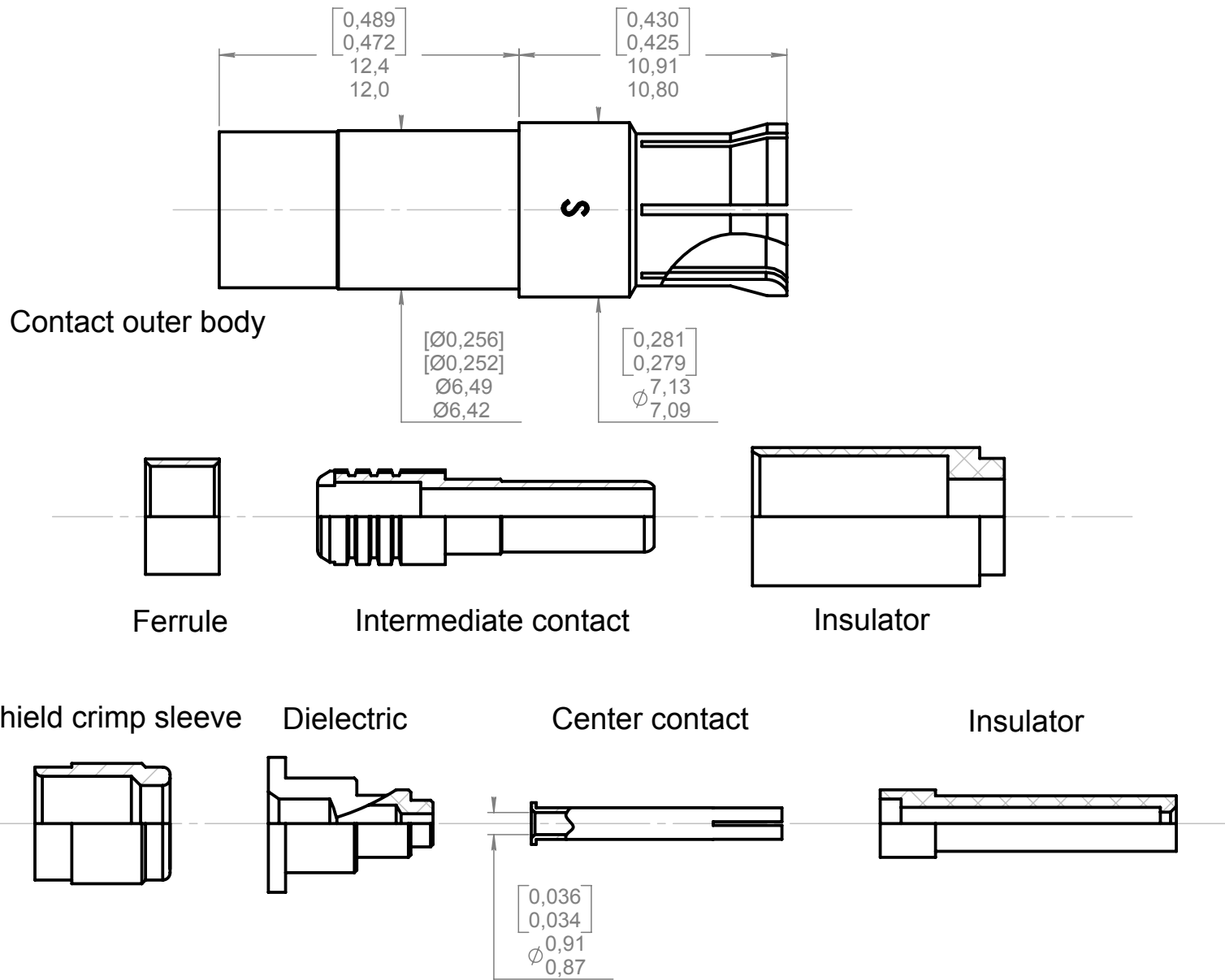


Series  
EPX

CONCENTRIC TWINAX  
SOCKET CONTACT  
Twinax PAN 6421, M17176/00002 and Raychem 10613 cables.

Issue:  
Apr. 24, 2008

Page  
1/1



**MATERIALS:**

- Outer body contact and center contact: Beryllium copper 1/2 hardness in knoop 140 max (126 HV) for crimp barrel.
- Ferrule, shield crimp sleeve and intermediate contact: Copper alloy.
- Dielectric and insulators: PTFE.

**FINISHES:**

- All metallic parts: Gold per MIL-G-45204 type I or II grade C or D class 1,50 microinches over nickel plate per QQ-N-290.

Crimping tools: (Crimped contacts will show no crack when inspected, per MIL-C-22520, at 10x).

- Center contact:
  - Basic tool: M22520/2.01 (RADIALL: 282 281).
  - Selector set 3.
  - Positionner RADIALL: 282 560.
- Intermediate and outer body contacts:
  - Basic tool: M22520/5.01 (RADIALL 282 293).
  - Die: M22520/5.05 (RADIALL 282 246).
  - Die closure: B for intermediate contact.  
A for outer body contact.

Extraction tool: M81969/28.01 (RADIALL 282 946).

See wiring specification: RP 2737.

**DIMENSIONS : mm (inch are given for information only)**



This information is given as an indication. In the continual goal to improve our products, we reserve the right to make any modifications judged necessary.

4112\_9311

CREATION				
PEN:				
NOM: MACARI JP.	04/24/08	Raychem 10613 cable added.	Malty	Pessard
DATE: Oct. 10, 84	10/28/99	Updated of shield crimp sleeve.	Dupuis	Lahoreau
APPR.:	01/20/99	Redraw, Updated from the detail drawing, Added M17176/00002 cable and standards.	Garcia	Motteau
	Issue	Revisions	Name	Approved

# Mouser Electronics

Authorized Distributor

Click to View Pricing, Inventory, Delivery & Lifecycle Information:

[Radial:](#)

[617050](#)