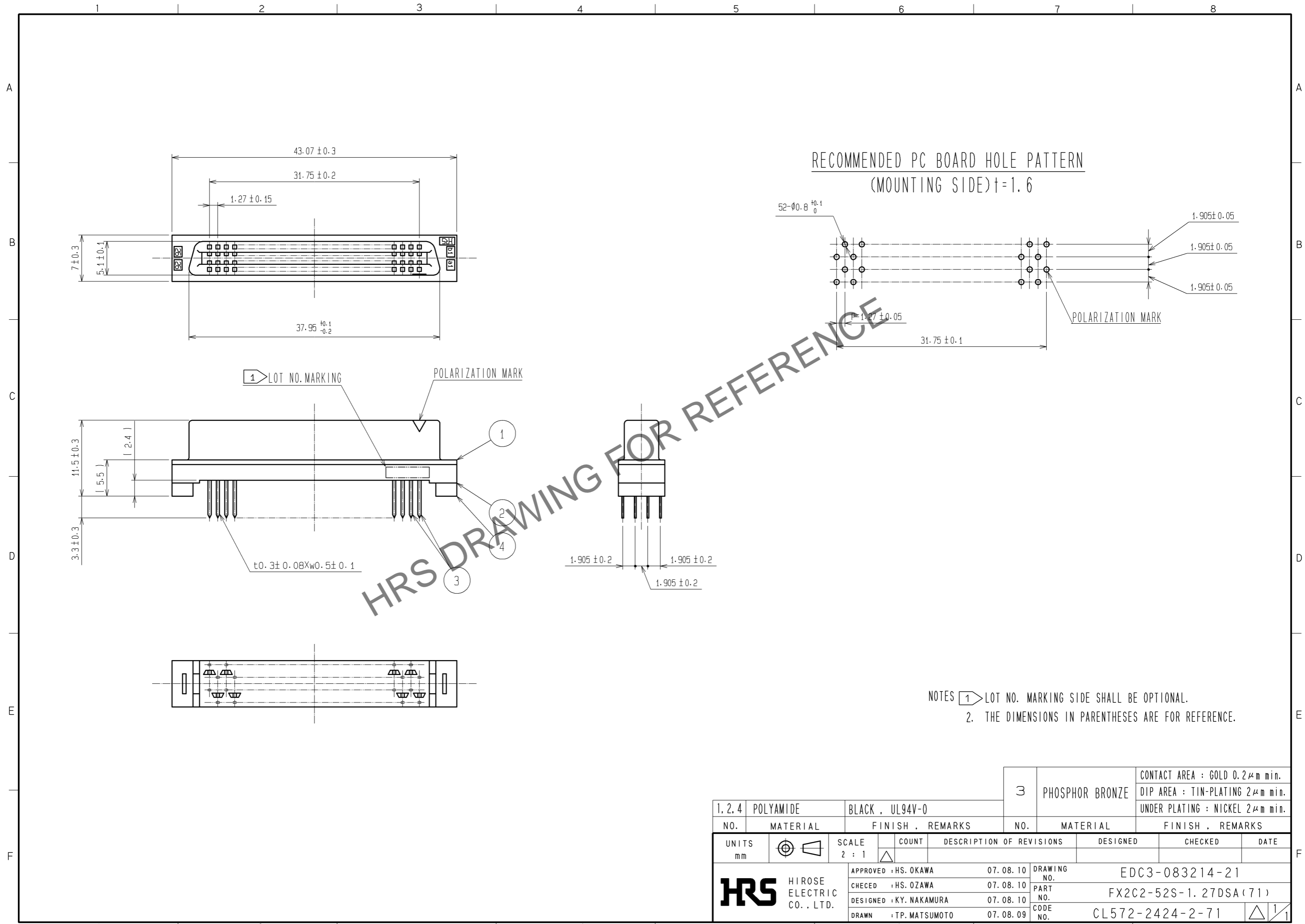


Jul.1.2024 Copyright 2024 HIROSE ELECTRIC CO., LTD. All Rights Reserved.  
 In case of consideration for using Automotive equipment / device which demand high reliability, kindly contact our sales window correspondents.



HRS DRAWING FOR REFERENCE

NOTES 1 LOT NO. MARKING SIDE SHALL BE OPTIONAL.  
 2. THE DIMENSIONS IN PARENTHESES ARE FOR REFERENCE.

1. 2. 4		POLYAMIDE	BLACK , UL94V-0	3	PHOSPHOR BRONZE	CONTACT AREA : GOLD 0.2 $\mu$ m min. DIP AREA : TIN-PLATING 2 $\mu$ m min. UNDER PLATING : NICKEL 2 $\mu$ m min.
NO.	MATERIAL	FINISH , REMARKS		NO.	MATERIAL	FINISH , REMARKS
UNITS mm		SCALE 2 : 1	COUNT $\Delta$	DESCRIPTION OF REVISIONS		DESIGNED
		APPROVED : HS. OKAWA	07.08.10	DRAWING NO.		EDC3-083214-21
HIROSE ELECTRIC CO., LTD.		CHECKED : HS. OZAWA	07.08.10	PART NO.		FX2C2-52S-1.27DSA(71)
		DESIGNED : KY. NAKAMURA	07.08.10	CODE NO.		CL572-2424-2-71
		DRAWN : TP. MATSUMOTO	07.08.09			$\Delta$ 1/1