

**DESIGNED & DIMENSIONED
IN MILLIMETERS [INCHES]**

**DO NOT
SCALE FROM
THIS PRINT**

TEMX-1XX-XX-XX.X-XX-D-XX-X-XX

PACKAGING
 BLANK: TRAY (SEE NOTES 4 & 9)
 -TR: TAPE & REEL (SEE NOTES 9 & 10)
 -FR: FULL REEL QTY TAPE & REEL
 (SEE NOTES 9 & 10)

PICK & PLACE OPTION
 -K: POLYIMIDE FILM
 (USE K-DOT-217-.313-.005,
 SEE FIG 5, SHT 2)

OPTION
 -A: ALIGNMENT PIN (SEE FIG 2, SHT 2)
 (NOT AVAILABLE WITH -LC, -WT, -L1)
 -LC: LOCKING CLIP (SEE FIG 3, SHT 2)
 (NOT AVAILABLE WITH -A, -WT, -L1)
 -WT: WELD TAB (SEE FIG 4, SHT 2)
 (NOT AVAILABLE WITH -A, -LC, -L1)
 -L1: LATCHING (SEE FIG 7, SHT 3)
 (ONLY AVAILABLE ON -03.0 STACK
 HEIGHT AND 5 - 20 POS)
 (NOT AVAILABLE WITH -A, -LC, -WT)

ROW SPECIFICATION
 -D: DOUBLE ROW

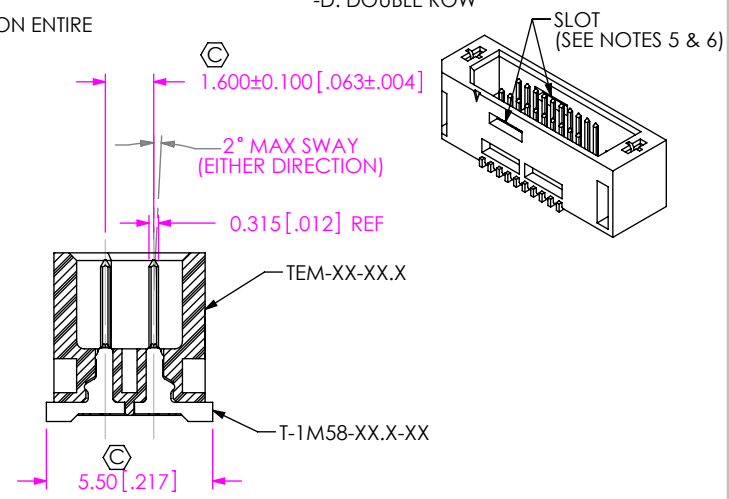
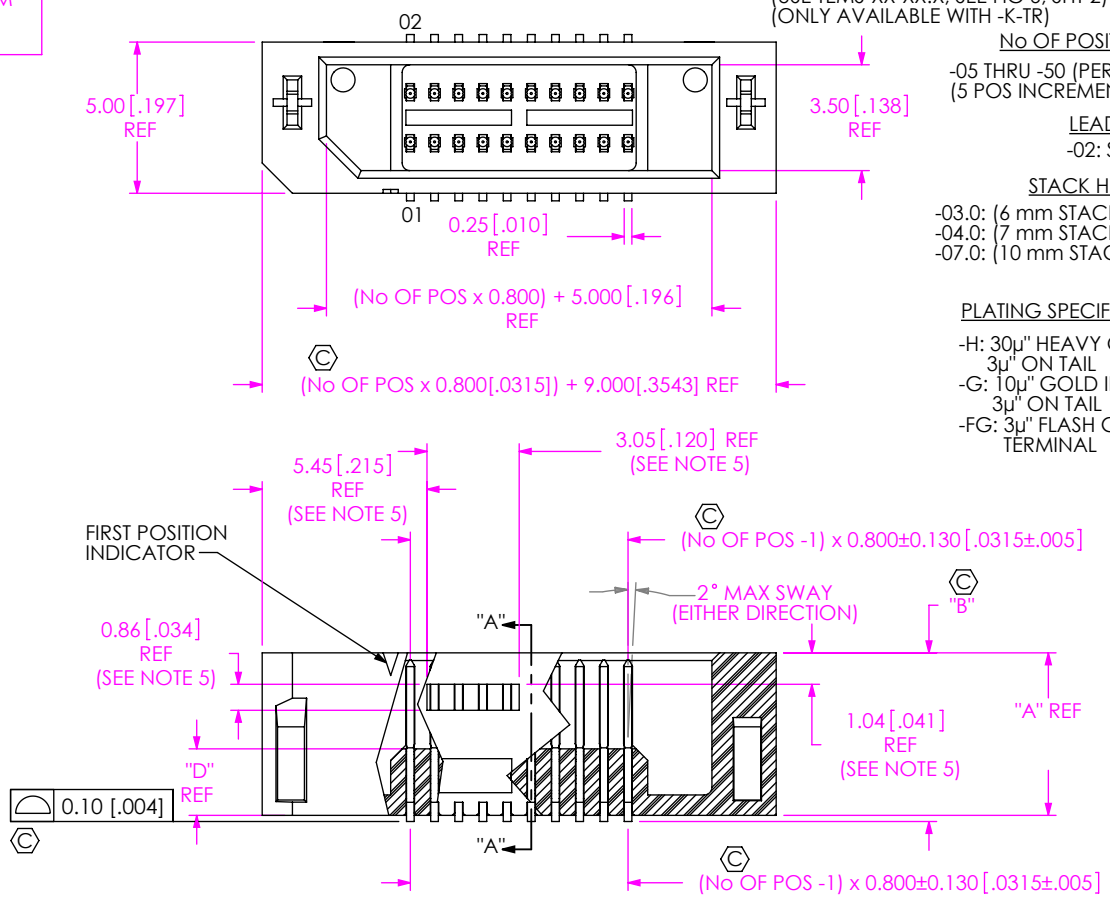
BODY OPTION
 (LEAVE BLANK IF OPTION NOT USED)
 S: SLIM
 (NOT AVAILABLE WITH -LC, -WT OR -L1)
 (USE TEMS-XX-XX.X, SEE FIG 6, SHT 2)
 (ONLY AVAILABLE WITH -K-TR)

No OF POSITIONS
 -05 THRU -50 (PER ROW)
 (5 POS INCREMENTS)

LEAD STYLE
 -02: SURFACE MOUNT

STACK HEIGHT
 -03.0: (6 mm STACK HEIGHT) (T-1M58-03.0-XX)
 -04.0: (7 mm STACK HEIGHT) (T-1M58-04.0-XX)
 -07.0: (10 mm STACK HEIGHT) (T-1M58-07.0-XX)

PLATING SPECIFICATION
 -H: 30µ" HEAVY GOLD IN CONTACT AREA
 3µ" ON TAIL
 -G: 10µ" GOLD IN CONTACT AREA
 3µ" ON TAIL
 -FG: 3µ" FLASH GOLD ON ENTIRE
 TERMINAL



SECTION "A"- "A"

FIG 1
 TEM-110-02-03.0-XX-D SHOWN

STACK HEIGHT	"A"	"B"	"C"	"D"
-03.0	5.375 [.2116]	5.610 [.2209]	5.742 [.2261]	2.200 [.0866]
-04.0	6.375 [.2510]	6.610 [.2602]	6.742 [.2654]	3.200 [.1260]
-07.0	9.375 [.3690]	9.610 [.3783]	9.472 [.3729]	6.200 [.2441]

- NOTES:
- ① REPRESENTS A CRITICAL DIMENSION.
 - MINIMUM PUSHOUT FORCE FOR TERMINAL, LOCKING CLIP AND WELD TAB: 2.22N [0.50LBF].
 - MAXIMUM POST HEIGHT VARIATION BETWEEN ANY TWO PINS: 0.13 [.005]
 - TEM PARTS TO BE PACKAGED IN TRAYS UNLESS OTHERWISE SPECIFIED.
 TEMS PARTS TO BE PACKAGED IN TAPE & REEL.
 - POSITIONS -05 THRU -20 WILL HAVE ONLY ONE SLOT PER SIDE.
 POSITIONS -25 THRU -40 WILL HAVE TWO SLOTS PER SIDE.
 POSITIONS -45 THRU -50 WILL HAVE THREE SLOTS PER SIDE.
 - SLOTS ONLY AVAILABLE IN -03.0 LEAD STYLE.
 - NOTE DELETED.
 - NOTE DELETED.
 - ORDERS WILL BE PACKAGED ACCORDING TO THE SAMTEC PACKAGING EFFICIENCY
 STANDARDS (SPES) FOUND ON WWW.SAMTEC.COM.
 - ATTACH LABEL -4X2 TO EACH REEL.

**UNLESS OTHERWISE SPECIFIED,
 DIMENSIONS ARE IN MILLIMETERS.**

TOLERANCES ARE:
 DECIMALS ANGLES
 X.X: ±0.3 [.01] 2°
 X.XX: ±0.13 [.005]
 X.XXX: ±0.051 [.0020]

MATERIAL: DO NOT SCALE DRAWING SHEET SCALE: 4:1

INSULATOR: LCP, COLOR: BLACK
 -L OPTION ONLY: LCP, COLOR: NATURAL

TERMINAL AND LOCKING CLIP: PHOS BRONZE 510
 WELD TAB: BRASS ALLOY 260, FULL HARD

PROPRIETARY NOTE
 THIS DOCUMENT CONTAINS CONFIDENTIAL AND
 PROPRIETARY INFORMATION AND ALL DESIGN,
 MANUFACTURING, REPRODUCTION, USE, PATENT RIGHTS
 AND SALES RIGHTS ARE EXPRESSLY RESERVED BY SAMTEC,
 INC. THIS DOCUMENT SHALL NOT BE DISCLOSED, IN WHOLE
 OR PART, TO ANY UNAUTHORIZED PERSON OR ENTITY NOR
 REPRODUCED, TRANSFERRED OR INCORPORATED IN ANY
 OTHER PROJECT IN ANY MANNER WITHOUT THE EXPRESS
 WRITTEN CONSENT OF SAMTEC, INC.

520 PARK EAST BLVD, NEW ALBANY, IN 47150
 PHONE: 812-944-6733 FAX: 812-948-5047
 e-Mail info@SAMTEC.com code 55322

DESCRIPTION:
 0.8 mm TIGER EYE MICRO TERMINAL

DWG. NO.
 TEMX-1XX-XX-XX.X-XX-D-XX-X-XX

BY: B RAY 10/18/2007 SHEET 1 OF 3

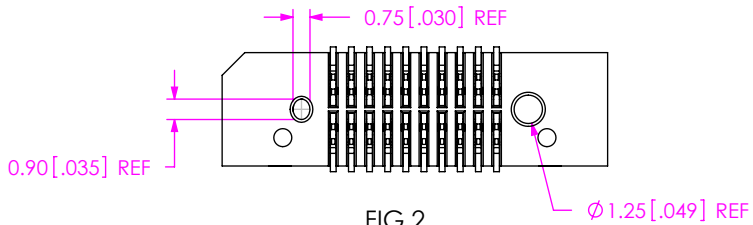
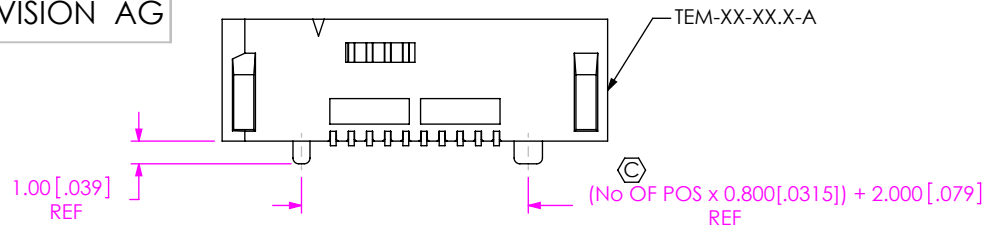


FIG 2
TEM-110-02-03.0-XX-D-A SHOWN
(SAME AS FIG 1, DIFFERENT AS SHOWN)

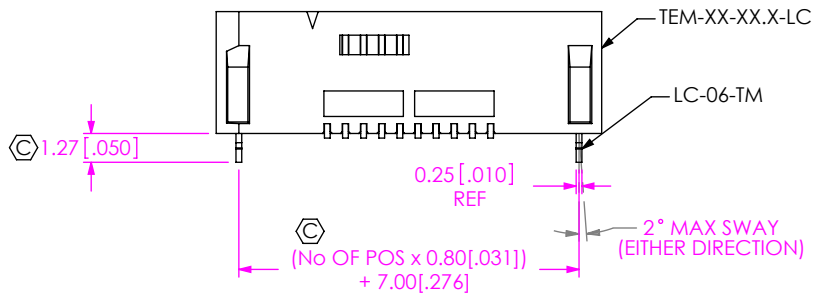


FIG 3
TEM-110-02-03.0-XX-D-LC SHOWN
(SAME AS FIG 1, DIFFERENT AS SHOWN)

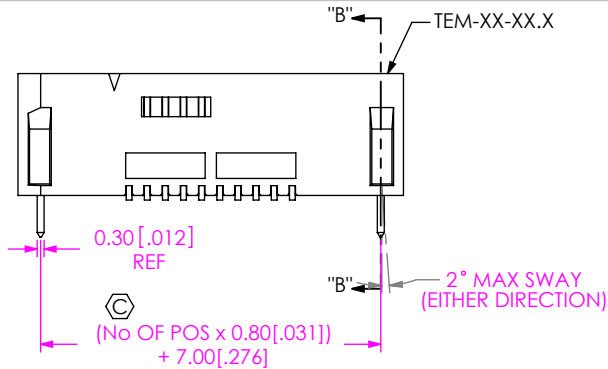
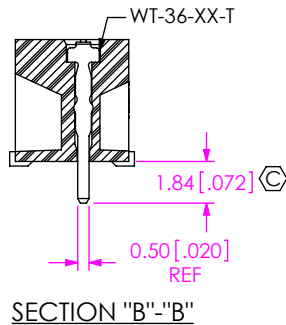


FIG 4
TEM-110-02-03.0-XX-D-WT SHOWN
(SAME AS FIG 1, DIFFERENT AS SHOWN)



SECTION "B"-"B"

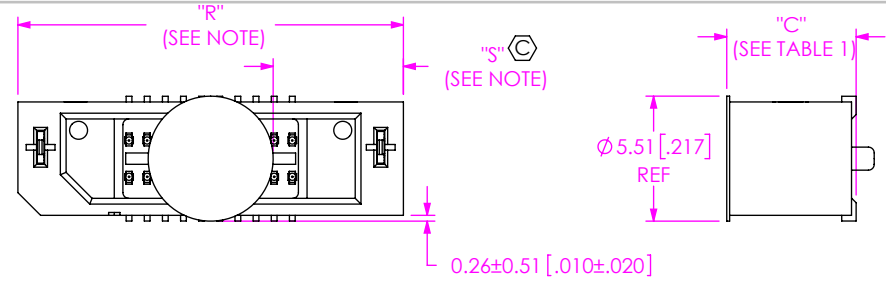


FIG 5
TEM-110-02-03.0-XX-D-K SHOWN
(SAME AS FIG 1, DIFFERENT AS SHOWN)

NOTE: "R" = OVERALL LENGTH (REF)
"S" = $\{("R" - 5.51 [.217])/2 [.0787]\} \pm 0.51 [.020]$

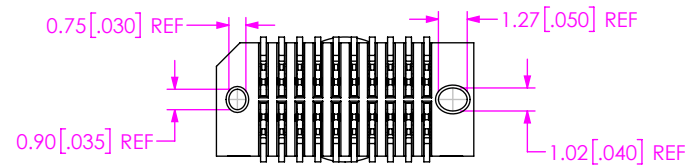
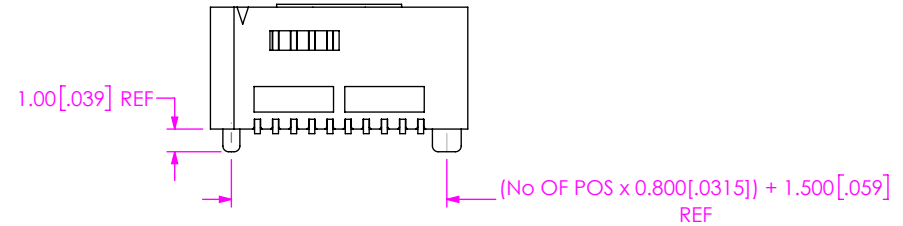
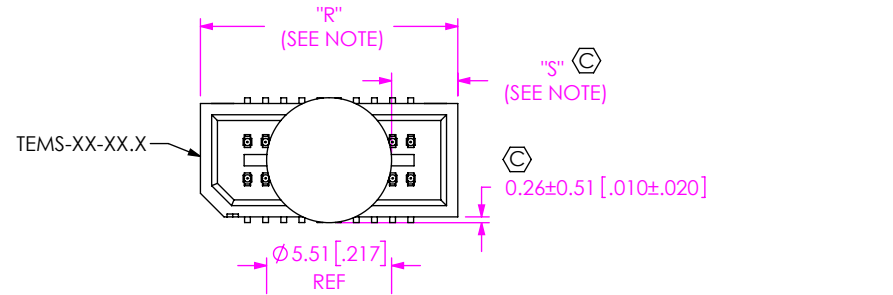


FIG 6
TEMS-110-02-03.0-XX-D-A-K SHOWN
(SAME AS FIG 1, DIFFERENT AS SHOWN)

NOTE: "R" = $((No OF POS \times 0.800) + 3.35) \pm 0.05$
"S" = $\{("R" - 5.51 [.217])/2 [.0787]\} \pm 0.51 [.020]$

PROPRIETARY NOTE
THIS DOCUMENT CONTAINS CONFIDENTIAL AND PROPRIETARY INFORMATION AND ALL DESIGN, MANUFACTURING, REPRODUCTION, USE, PATENT RIGHTS AND SALES RIGHTS ARE EXPRESSLY RESERVED BY SAMTEC, INC. THIS DOCUMENT SHALL NOT BE DISCLOSED, IN WHOLE OR PART, TO ANY UNAUTHORIZED PERSON OR ENTITY NOR REPRODUCED, TRANSFERRED OR INCORPORATED IN ANY OTHER PROJECT IN ANY MANNER WITHOUT THE EXPRESS WRITTEN CONSENT OF SAMTEC, INC.

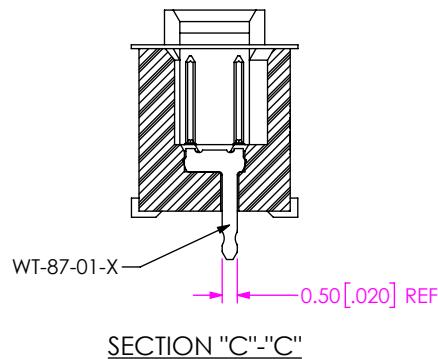
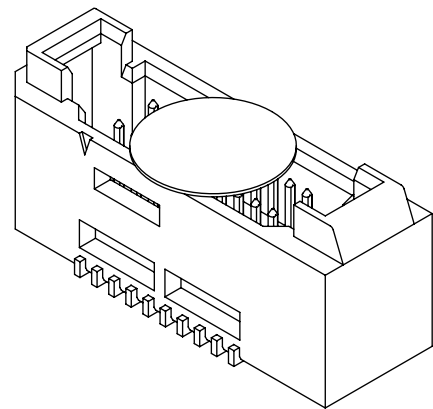
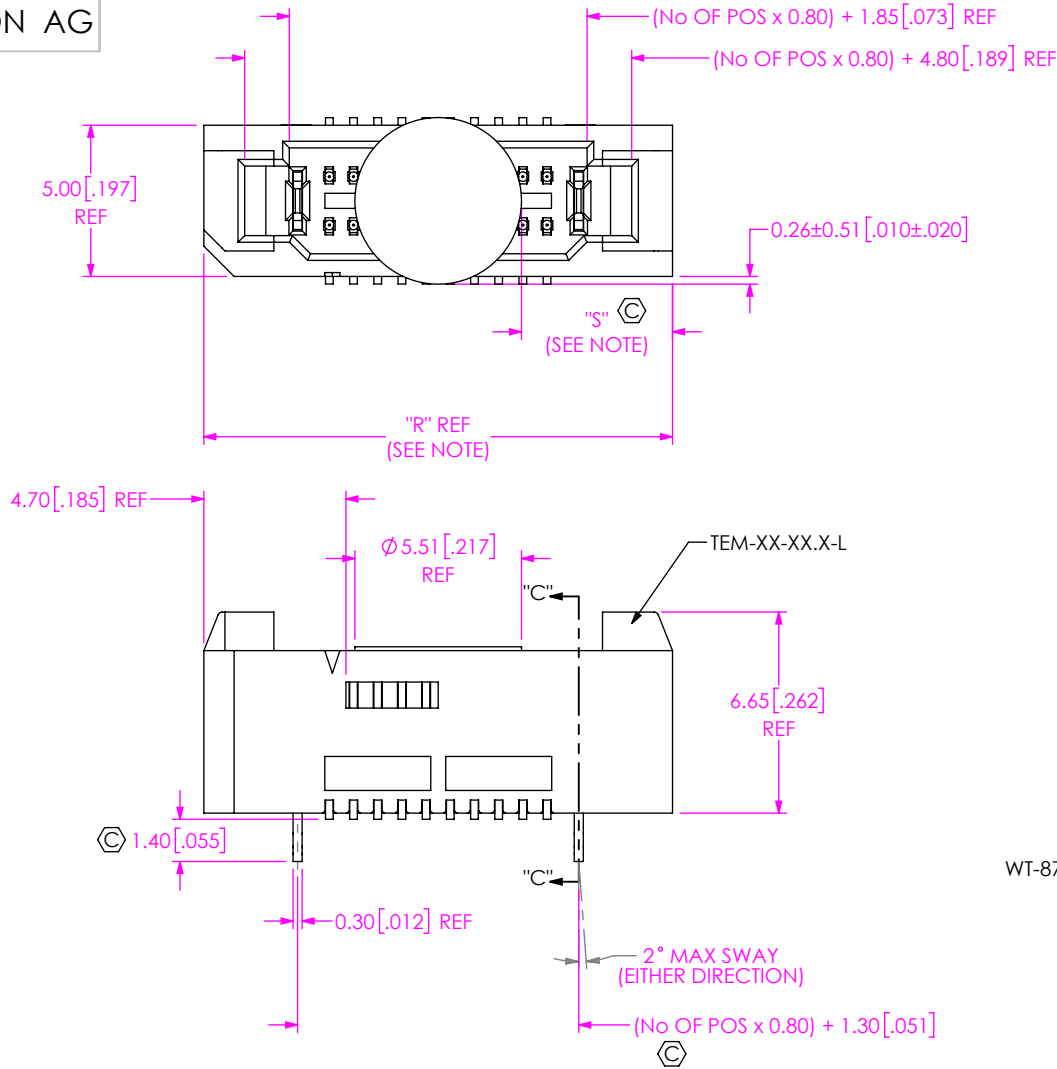
DO NOT SCALE DRAWING
SHEET SCALE: 3:1



520 PARK EAST BLVD, NEW ALBANY, IN 47150
PHONE: 812-944-6733 FAX: 812-948-5047
e-Mail info@SAMTEC.com code 55322

DESCRIPTION:
0.8mm TIGER EYE MICRO TERMINAL
DWG. NO.
TEMX-1XX-XX-XX.X-XX-D-XX-X-XX
BY: B RAY 10/18/2007 SHEET 2 OF 3

TABLE 2	
STACK HEIGHT	WELD TAB
-03.0	WT-36-02-X
-04.0	WT-36-03-X
-07.0	WT-36-04-X



NOTE: "R" = (No OF POS x 0.80) + 7.50 [.295] REF
 "S" = {("R" - 5.51 [.217])/2} ± 0.51 [.020]

FIG 7
 TEM-1 10-02-03.0-XX-D-L1-K SHOWN
 (SAME AS FIG 1, DIFFERENT AS SHOWN)

<p>PROPRIETARY NOTE</p> <p>THIS DOCUMENT CONTAINS CONFIDENTIAL AND PROPRIETARY INFORMATION AND ALL DESIGN, MANUFACTURING, REPRODUCTION, USE, PATENT RIGHTS AND SALES RIGHTS ARE EXPRESSLY RESERVED BY SAMTEC, INC. THIS DOCUMENT SHALL NOT BE DISCLOSED, IN WHOLE OR PART, TO ANY UNAUTHORIZED PERSON OR ENTITY NOR REPRODUCED, TRANSFERRED OR INCORPORATED IN ANY OTHER PROJECT IN ANY MANNER WITHOUT THE EXPRESS WRITTEN CONSENT OF SAMTEC, INC.</p> <p>DO NOT SCALE DRAWING</p> <p>SHEET SCALE: 4:1</p>		
	<p>520 PARK EAST BLVD, NEW ALBANY, IN 47150 PHONE: 812-944-6733 FAX: 812-948-5047 e-Mail info@SAMTEC.com code 55322</p>	
	<p>DESCRIPTION: 0.8mm TIGER EYE MICRO TERMINAL</p>	
	<p>DWG. NO. TEMX-1XX-XX-XX.X-XX-D-XX-X-XX</p>	<p>BY: B RAY</p>
		<p>SHEET 3 OF 3</p>