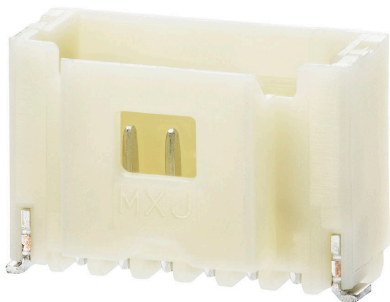




**Part Number :** [5013311407](#)  
**Product Description :** 1.00mm Pitch, Pico-Clasp PCB Header, Single Row, Vertical, Surface Mount, Tin Plated, Inner Positive Lock, 14 Circuits, Natural  
**Series Number :** 501331  
**Status :** Active  
**Product Category :** PCB Headers and Receptacles



Documents & Resources


**Drawings**  
[Drawing 5013311407\\_sd.pdf](#)

**3D Models and Design Files**  
[2D Drawing DXF 5013311407.dxf](#)  
[2D Drawing DXF \(PDF\) 5013311407.pdf](#)  
[3D Model 5013311407\\_stp.zip](#)

**Specifications**  
[Packaging Specification SPK-501331-001-001.pdf](#)  
[Product Specification 5013300000-PS-001.pdf](#)  
[Product Specification 5013301000-PS-001.pdf](#)  
[Product Specification 5013301000-PS-CHI-001.pdf](#)

Product Environment Compliance

Compliance

GADSL/IMDS	Compliant with Exemption 44; 33
China RoHS	
EU ELV	Not Relevant
Low-Halogen Status	Not Low-Halogen per IEC 61249-2-21
REACH SVHC	Not Contained per D(2024)4144-DC (27 June 2024)
EU RoHS	Compliant per EU 2015/863

[Multiple Part Product Compliance Statements](#)  
- Eu RoHS

- REACH SVHC

- Low-Halogen

#### Multiple Part Industry Compliance Documents

- IPC 1752A Class C

- IPC 1752A Class D

- Molex Product Compliance Declaration

- IEC-62474

- chemSHERPA (xml)

#### EU RoHS Certificate of Compliance

---

## Part Details

### General

Status	Active
Category	PCB Headers and Receptacles
Series	501331
Description	1.00mm Pitch, Pico-Clasp PCB Header, Single Row, Vertical, Surface Mount, Tin Plated, Inner Positive Lock, 14 Circuits, Natural
Application	Signal, Wire-to-Board
Component Type	PCB Header
Product Family	Pico-Clasp Wire-to-Board Connectors
Product Name	Pico-Clasp
UPC	822348542796

### Agency

UL	E29179
----	--------

### Electrical

Current - Maximum per Contact	1.0A
Voltage - Maximum	100V AC (RMS)/DC

### Physical

Breakaway	No
Circuits (Loaded)	14
Circuits (maximum)	14

Color - Resin	Natural
Durability (mating cycles max)	30
First Mate / Last Break	No
Glow-Wire Capable	No
Lock to Mating Part	Yes
Material - Metal	Phosphor Bronze
Material - Plating Mating	Tin
Material - Plating Termination	Tin
Material - Resin	Nylon
Net Weight	270.100/mg
Number of Rows	1
Orientation	Vertical
Packaging Type	Embossed Tape on Reel
PCB Locator	No
PCB Retention	Yes
Pitch - Mating Interface	1.00mm
Polarized to Mating Part	Yes
Polarized to PCB	No
Robotic Placement	Vacuum Pick-Up Tape
Shrouded	Fully
Stackable	No
Temperature Range - Operating	-40° to +105°C
Termination Interface Style	Surface Mount

---

## Mates With / Use With

### Mates with Part(s)

Description	Part Number
Pico-Clasp Low-Halogen Single Row Receptacle Housings	<u>501330</u>