



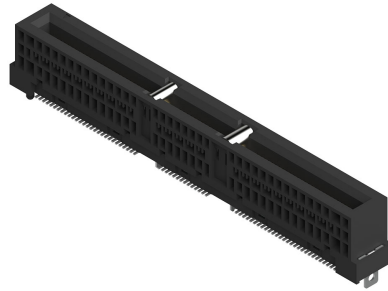
Part Number : [2066530168](#)

Product Description : 0.60mm Pitch Sliver Edge Card Connector, Vertical, 32 Gbps, 1.57mm PCB Thickness, 4C+, 168 Circuits, with Metal Key Option

Series Number : 206653

Status : Active

Product Category : Card Edge Connectors



Documents & Resources

Drawings

[Drawing 2066530168_sd.pdf](#)

[Packaging Design Drawing 2066530168-PK-000.pdf](#)

3D Models and Design Files

[3D Model 2066530168_stp.zip](#)


Specifications

[Application Specification 2066530001-AS-000.pdf](#)

[Product Specification 2066530001-PS-000.pdf](#)

Product Environment Compliance

Compliance

GADSL/IMDS	Not Relevant
China RoHS	
EU ELV	Not Relevant
Low-Halogen Status	Low-Halogen per IEC 61249-2-21
REACH SVHC	Not Contained per D(2024)4144-DC (27 June 2024)
EU RoHS	Compliant per EU 2015/863

[Multiple Part Product Compliance Statements](#)

- Eu RoHS
- REACH SVHC
- Low-Halogen

[Multiple Part Industry Compliance Documents](#)

- IPC 1752A Class C

- IPC 1752A Class D
- Molex Product Compliance Declaration
- IEC-62474
- chemSHERPA (xml)

EU RoHS Certificate of Compliance

Part Details

General

Status	Active
Category	Card Edge Connectors
Series	206653
Description	0.60mm Pitch Sliver Edge Card Connector, Vertical, 32 Gbps, 1.57mm PCB Thickness, 4C+, 168 Circuits, with Metal Key Option
Component Type	Edgecard to PCB
Product Family	Sliver Edge Card Connector and Cable Assemblies
Product Name	Sliver
Standard Based	General
UPC	193264390892

Agency

CSA	LR19980
UL	E29179

Electrical

Current - Maximum per Contact	1.1A
Data Rate	32.0 Gbps
High Power Bay (30.0A or more)	No
Voltage - Maximum	29V AC (RMS)/DC

Physical

Circuit Size Range	65-200 Circuits
Circuits (Loaded)	168
Color - Resin	Black
Durability (mating cycles max)	200

Edge Card Thickness	1.57mm
Flammability	94V-0
Keying to Mating Part	Yes
Material - Metal	Copper Alloy
Material - Plating Mating	Gold
Material - Plating Termination	Matte Tin
Material - Resin	Liquid Crystal Polymer
Net Weight	3.910/g
Orientation	Vertical
Packaging Type	Embossed Tape on Reel
PCB Locator	Yes
PCB Retention	Yes
PCB Thickness - Recommended	1.57mm
Pitch - Mating Interface	0.60mm
Plating min - Mating	0.762µm
Plating min - Termination	2.540µm
(p)ower-(s)ignal Configuration	168s - 0p
Temperature Range - Operating	-55° to +85°C
Termination Interface Style	Surface Mount