

1060-20-0222 ✓ ACTIVE

DEUTSCH | DEUTSCH Common Contact

TE Internal #: 1060-20-0222

Pin, Pin Diameter 1 mm [.04 in], 22 – 16 AWG Wire Size, .35 – 1.5 mm<sup>2</sup> Wire Size, DEUTSCH Common Contact, Automotive Terminals

[View on TE.com >](#)



Terminals & Splices > Automotive Terminals



Terminal Type: **Pin**

Mating Pin Diameter: **1 mm [.04 in]**

Terminal Transmits: **0 – 24 A (Low Power)**

Wire Size: **.35 – 1.5 mm<sup>2</sup>**

## Features

### Product Type Features

Receptacle Style	180°
Sealable	No
Primary Locking Feature	Integrated in Housing

### Contact Features

Contact Size	Size 20
Contact Fabrication	Stamped & Formed
Wire Contact Termination Area Plating Material	Nickel
Typical Current Rating	7.5 A
Crimp Type	F-Crimp
Terminal Type	Pin
Mating Pin Diameter	1 mm [.04 in]
Interface Plating	Nickel (Ni)

### Termination Features

Termination Method to Wire & Cable	Crimp
Product Terminates To	Wire

### Dimensions

Compatible Insulation Diameter Range	1.3 – 2.2 mm [.051 – .085 in]
Wire Size	.35 – 1.5 mm <sup>2</sup>
Wire Size Search	16 AWG, 18 AWG, 20 AWG, 22 AWG



### Usage Conditions

Insulation Option	Uninsulated
Operating Temperature (Max)	125 °C[257 °F]
Operating Temperature Range	-55 – 125 °C[-67 – 257 °F]

### Operation/Application

Compatible With Wire Base Material	Copper
------------------------------------	--------

### Packaging Features

Packaging Quantity	4000
Packaging Method	Reel

### Other

Customer Preferred Contact	Yes
Terminal Transmits	0 – 24 A (Low Power)

### Product Compliance

[For compliance documentation, visit the product page on TE.com>](#)

EU RoHS Directive 2011/65/EU	Compliant
EU ELV Directive 2000/53/EC	Compliant
China RoHS 2 Directive MIIT Order No 32, 2016	No Restricted Materials Above Threshold
EU REACH Regulation (EC) No. 1907/2006	Current ECHA Candidate List: JUNE 2024 (241) Candidate List Declared Against: JAN 2024 (240) Does not contain REACH SVHC
Halogen Content	Low Halogen - Br, Cl, F, I < 900 ppm per homogenous material. Also BFR/CFR/PVC Free
Solder Process Capability	Not reviewed for solder process capability

#### Product Compliance Disclaimer

This information is provided based on reasonable inquiry of our suppliers and represents our current actual knowledge based on the information they provided. This information is subject to change. The part numbers that TE has identified as EU RoHS compliant have a maximum concentration of 0.1% by weight in homogenous materials for lead, hexavalent chromium, mercury, PBB, PBDE, DBP, BBP, DEHP, DIBP, and 0.01% for cadmium, or qualify for an exemption to these limits as defined in the Annexes of Directive 2011/65/EU (RoHS2). Finished electrical and electronic equipment products will be CE marked as required by Directive 2011/65/EU. Components may not be CE marked. Additionally, the part numbers that TE has identified as EU ELV compliant have a maximum concentration of 0.1% by weight in homogenous materials for lead, hexavalent chromium, and mercury, and 0.01% for cadmium, or qualify for an exemption to these limits as defined in the Annexes of Directive 2000/53/EC (ELV). Regarding the REACH Regulation, the information TE provides on SVHC in articles for this part number is based on the latest European Chemicals Agency (ECHA) 'Guidance on requirements for substances in articles' posted at this URL: <https://echa.europa.eu/guidance-documents/guidance-on-reach>


## Compatible Parts




TE Part # CAT-H3930-CH8172  
DEUTSCH HD30 Housings



TE Part # CAT-H396-CH8172  
DEUTSCH HDP20 Housings



TE Part # CAT-D485-CH8172  
DEUTSCH DTM Housings



TE Part # CAT-D781-CH8172  
DEUTSCH DRB Housings



TE Part # DTM04-08PC  
REC, 8P, GRN, N, C



TE Part # 1062-20-0622  
SOC, SF, SIZE 20, 14-16, NI/NI



TE Part # 1062-20-0322  
SOC, SF, SIZE 20, 16-22, SLEWLESS, NI /NI



TE Part # DTM04-3P-R011  
REC, 3P, BLK, 90DEG, PANEL /NI



TE Part # DTMH04-2PD  
REC, 2P, BLK, N, HI TEMP, D



TE Part # DTMH04-4PD  
REC, 4P, BLK, N, HI TEMP, D



TE Part # CAT-D799-CH8172  
DEUTSCH DRC Housings



TE Part # CAT-ST858-CH8172  
DEUTSCH Strike Housings



TE Part # CAT-D48-ST273  
DEUTSCH Solid Contacts



TE Part # DTT-20-02  
CRIMP TOOL



TE Part # 2266120-1  
OCEAN\_2.0\_APPPLICATOR-S-069F0520-RSM



TE Part # DTM04-12PA-EE04  
REC, 12P, BLK, N, HIGH TEMP, A



TE Part # 1062-20-0222  
SOC, SF, SIZE 20, 16-22, NI/NI



TE Part # 1062-20-0122  
SOC, SF, SIZE 20, 16-22, NI/NI



TE Part # 1-2303064-1  
12POS,STAMPED 20,PIN HSG ASSY, SLD,COD 1



TE Part # 2266119-1  
OCEAN\_2.0\_APPPLICATOR-S-069F0680-RSM

## Also in the Series | DEUTSCH Common Contact



Automotive Terminals(91)



Insertion & Extraction Tools(8)

## Customers Also Bought



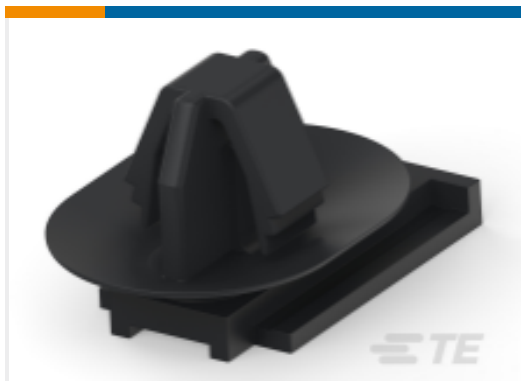
TE Part #WM-12P  
DEUTSCH DTM Wedgelocks



TE Part #1062-16-0622  
SOC, SF, SIZE 16, 16-20, NI/SN



TE Part #1-2303064-1  
12POS,STAMPED 20,PIN HSG ASSY,  
SLD,COD 1



TE Part #2005362-2  
SLOT CLIP FOR EJ MK-II



TE Part #2063677-1  
SDE MCP1.5 1.5mm<sup>2</sup> ASSY



TE Part #2390511-1  
SDE F DEUTSCH 20 PIN/SKT 18-  
22AWG ASSY



TE Part #ADA035N00000151000  
623 BULKHEAD CONNECTOR



TE Part #2205497-1  
Flat Cable MA-MA MICRO MATCH 6  
ways



TE Part #2322439-1  
T40MC2 Position Sensor

## Documents

### Product Drawings

PIN, SF, SIZE 20, 16-22, NI/NI

English

### CAD Files

3D PDF

3D



### Customer View Model

[ENG\\_CVM\\_CVM\\_1060-20-0222\\_H\\_c-1060-20-0222-h.2d\\_dxf.zip](#)

English

### Customer View Model

[ENG\\_CVM\\_CVM\\_1060-20-0222\\_H\\_c-1060-20-0222-h.3d\\_igs.zip](#)

English

### Customer View Model

[ENG\\_CVM\\_CVM\\_1060-20-0222\\_H\\_c-1060-20-0222-h.3d\\_stp.zip](#)

English

By downloading the CAD file I accept and agree to the [Terms and Conditions](#) of use.

## Datasheets & Catalog Pages

[CONNECTOR SELECTOR](#)

English

## Product Specifications

[Application Specification](#)

English