

Data Sheet

SEMS Screw DIN6900-3 Z4-1 M3x8 Galv. ST 4.8 Washer + Spring Lock Washer

Part No.: 081.58.336

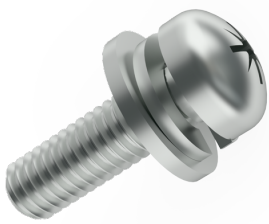
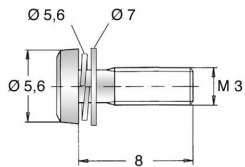


Image for illustrative purposes only.

Head Diameter [mm] :	6
Material :	Steel 4.8
Head Height [mm] :	2,4
Length [mm] :	8
Thread Size :	M3
Head Shape :	Pan Head
Combination :	Washer DIN6902-1 and Spring Lock Washer DIN6905
Actuator Size :	Pozidriv PZ1
DIN/ISO :	DIN7985 / ISO7045
Drive Type :	Cross Recess / Pozidriv-Z
Finish :	Galvanized, Blue, 5 µm, A2K
Weight per 100 pcs :	90 g
Customs tariff number :	73181558
Conformities :	<div style="display: flex; justify-content: space-around; align-items: center;"> <div style="text-align: center;"> <div style="border: 1px solid black; padding: 2px; font-size: 8px;">RoHS COMPLIANT</div> </div> <div style="text-align: center;"> <div style="border: 1px solid black; padding: 2px; font-size: 8px;">RoHS COMPLIANT</div> </div> <div style="text-align: center;"> <div style="border: 1px solid black; padding: 2px; font-size: 8px;">Reach COMPLIANT</div> </div> <div style="text-align: center;"> <div style="border: 1px solid black; padding: 2px; font-size: 8px;">SVHC COMPLIANT</div> </div> <div style="text-align: center;"> <div style="border: 1px solid black; padding: 2px; font-size: 8px;">Dodd Frank COMPLIANT</div> </div> </div>



All information is available online on our detail product page!

Looking for some advice for your specific situation?
If so, please don't hesitate to e-mail us at products@ettinger.de

Subject to changes and errors.