



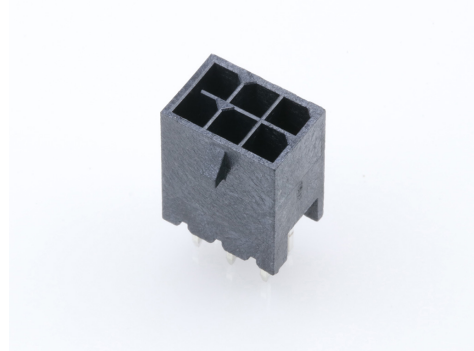
Part Number : [2068320621](#)

Product Description : Micro-Fit+ Vertical Header, Through Hole, 3.00mm Pitch, Dual Row, 6 Circuits, Tin (Sn) Plating, Glow-Wire Capable, Black, Tape and Reel

Series Number : 206832

Status : Active

Product Category : PCB Headers and Receptacles



Documents & Resources

Drawings

[Drawing 2068320621_sd.pdf](#)

[Packaging Design Drawing 2068320001-PK-000.pdf](#)

3D Models and Design Files

[3D Model 2068320621_stp.zip](#)

Specifications

[Application Specification 1722990000-AS-000.pdf](#)

[Application Specification 2064600001-AS-000.pdf](#)

[Product Specification 2064600000-PS-000.pdf](#)

[Test Summary 2064600000-TS-000.pdf](#)

[Test Summary 2064600001-TS-000.pdf](#)

Product Environment Compliance

Compliance

GADSL/IMDS	Not Relevant
China RoHS	
EU ELV	Not Relevant
Low-Halogen Status	Low-Halogen per IEC 61249-2-21
REACH SVHC	Not Contained per D(2024)4144-DC (27 June 2024)
EU RoHS	Compliant per EU 2015/863

[Multiple Part Product Compliance Statements](#)

- Eu RoHS

- REACH SVHC

- Low-Halogen

Multiple Part Industry Compliance Documents

- IPC 1752A Class C
- IPC 1752A Class D
- Molex Product Compliance Declaration
- IEC-62474
- chemSHERPA (xml)

EU RoHS Certificate of Compliance

Part Details

General

Status	Active
Category	PCB Headers and Receptacles
Series	206832
Description	Micro-Fit+ Vertical Header, Through Hole, 3.00mm Pitch, Dual Row, 6 Circuits, Tin (Sn) Plating, Glow-Wire Capable, Black, Tape and Reel
Application	Power, Wire-to-Board
Component Type	PCB Header
Product Family	Micro-Fit+ Connector System
Product Name	Micro-Fit+
UPC	193264753383

Agency

CSA	LR19980
UL	E29179

Electrical

Current - Maximum per Contact	12.5A
Voltage - Maximum	600V AC (RMS)/DC

Physical

Breakaway	No
Circuits (Loaded)	6
Circuits (maximum)	6

Color - Resin	Black
Durability (mating cycles max)	25
First Mate / Last Break	No
Flammability	94V-0
Glow-Wire Capable	Yes
Keying to Mating Part	None
Lock to Mating Part	Yes
Material - Metal	High Copper Alloy
Material - Plating Mating	Tin
Material - Plating Termination	Tin
Material - Resin	Liquid Crystal Polymer
Net Weight	0.789/g
Number of Rows	2
Orientation	Vertical
Packaging Type	Embossed Tape on Reel
PC Tail Length	3.18mm
PCB Thickness - Recommended	1.57mm
Pitch - Mating Interface	3.00mm
Pitch - Termination Interface	3.00mm
Polarized to Mating Part	Yes
Polarized to PCB	Yes
Shrouded	Yes
Temperature Range - Operating	-40° to +125°C
Termination Interface Style	Through Hole

Mates With / Use With

Mates with Part(s)

Description	Part Number
Micro-Fit+ Dual Row Receptacle Housings	<u>206461</u>