

MAIN FEATURES

- Specifically designed for leadfree reflow soldering processes (excellent performance).
- Up to 10K cycles mechanical life.
- IP54 protection according to IEC 60529.
- Cermet resistive element.
- Plastic material according to UL94V-0.
- Alumina substrate.
- 10mm version available (PSC-10).
- Full traceability.
- Also upon request:
 - Long life model for low cost control potentiometer applications.
 - Mechanical detents.
 - Low torque version.
 - Centering pins.
 - Wiper positioned at initial, 50% or fully clockwise.

MECHANICAL SPECIFICATIONS

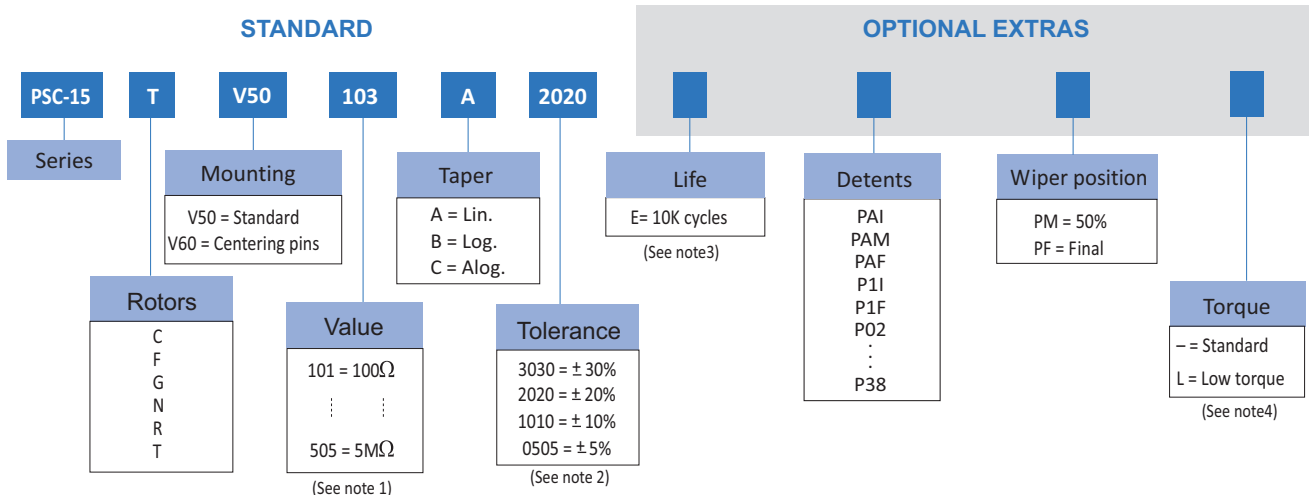
- Mechanical life*:	Up to 10k cycles.
- Mechanical rotation angle:	265° ± 5°
- Electrical rotation angle:	240° ± 20°
- Torque:	0.5 to 2.5 Ncm. (0.7 to 3.4 in-oz)
- Stop torque:	> 10 Ncm. (>14 in-oz)

ELECTRICAL SPECIFICATIONS

- Range of values*:
100Ω ≤ Rn ≤ 5MΩ (Decad. 1.0 - 2.0 - 2.2 - 2.5 - 4.7 - 5.0)
- Standard tolerance*: 100Ω ≤ Rn ≤ 1MΩ ± 20%
1MΩ ≤ Rn ≤ 5MΩ ± 30%
- Tapers*: Lin, Log, Alog (Log and Alog. only Rn ≥ 1K).
- Nominal power: 0.50W @ 70°C (158°F)
- Operating temperature*: -40°C + 90°C
- Residual resistance: ≤ 0.5 % Rn
- Equivalent noise resistance: ≤ 3% Rn
- Max. voltage: 250 VDC

* Others upon request

HOW TO ORDER



NOTES:

- (1) Value Example: $\overset{10}{\text{---}} \overset{1}{\text{---}} = 100 \Omega$
 Number of zeros.
 First two digits of the value.
- (2) Non standard tolerance, upon request. Example: +7%
 -5%
 07 05
 negative tolerance
 positive tolerance
- (3) 100k cycles version available (to be studied case by case).
- (4) Low torque: ≤ 1.5Ncm. No detent option available for low torque models.

HOW TO ORDER CUSTOM DRAWING

PSC15TV50 + DRAWING NUMBER

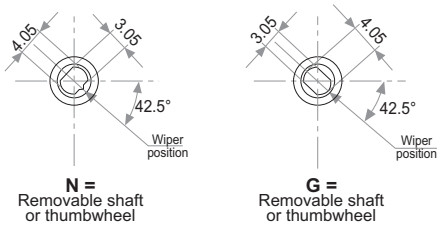
This way of ordering should be used for options which are not included in the "How to order" standard and optional extras.

STANDARD OPTIONS

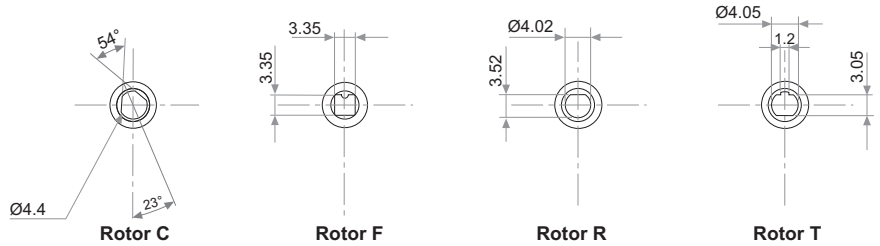
Mechanical Life	1000 cycles
Detents	None
Rotor colour	Brown
Housing colour	Brown
Wiper position	Initial
Torque	Standard
Packaging	Reel

ROTORS (collector side view)

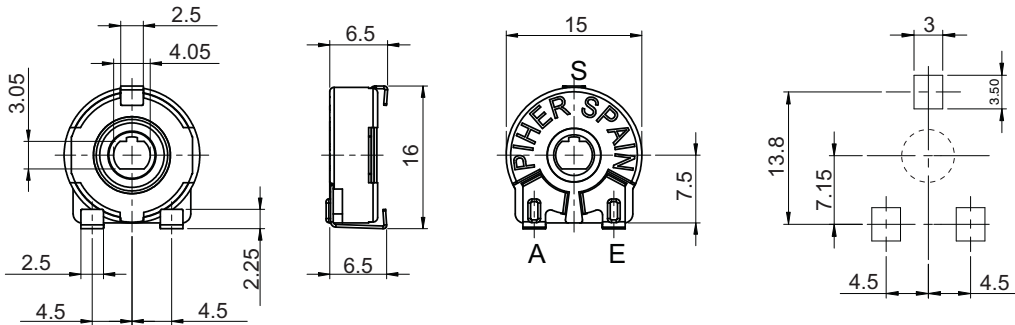
Wipers positioned at initial



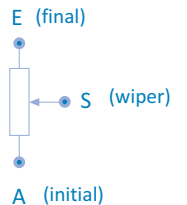
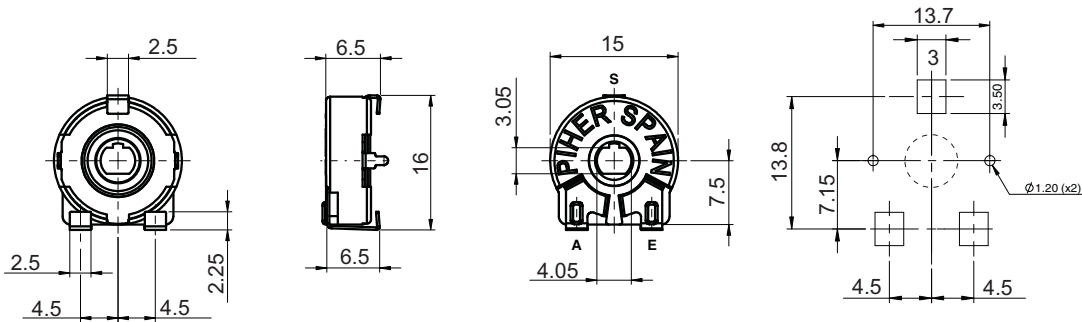
Wipers positioned at 50%



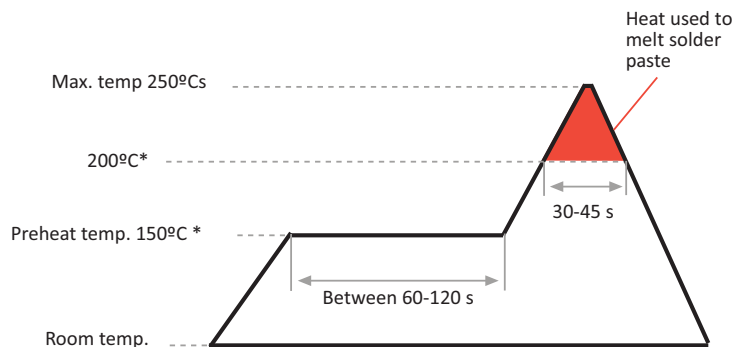
DIMENSIONS (V50 version)



DIMENSIONS (V60 version - with centering pins)



RECOMMENDED REFLOW PROFILE



* Melting point temp. depends on solder properties

TESTS

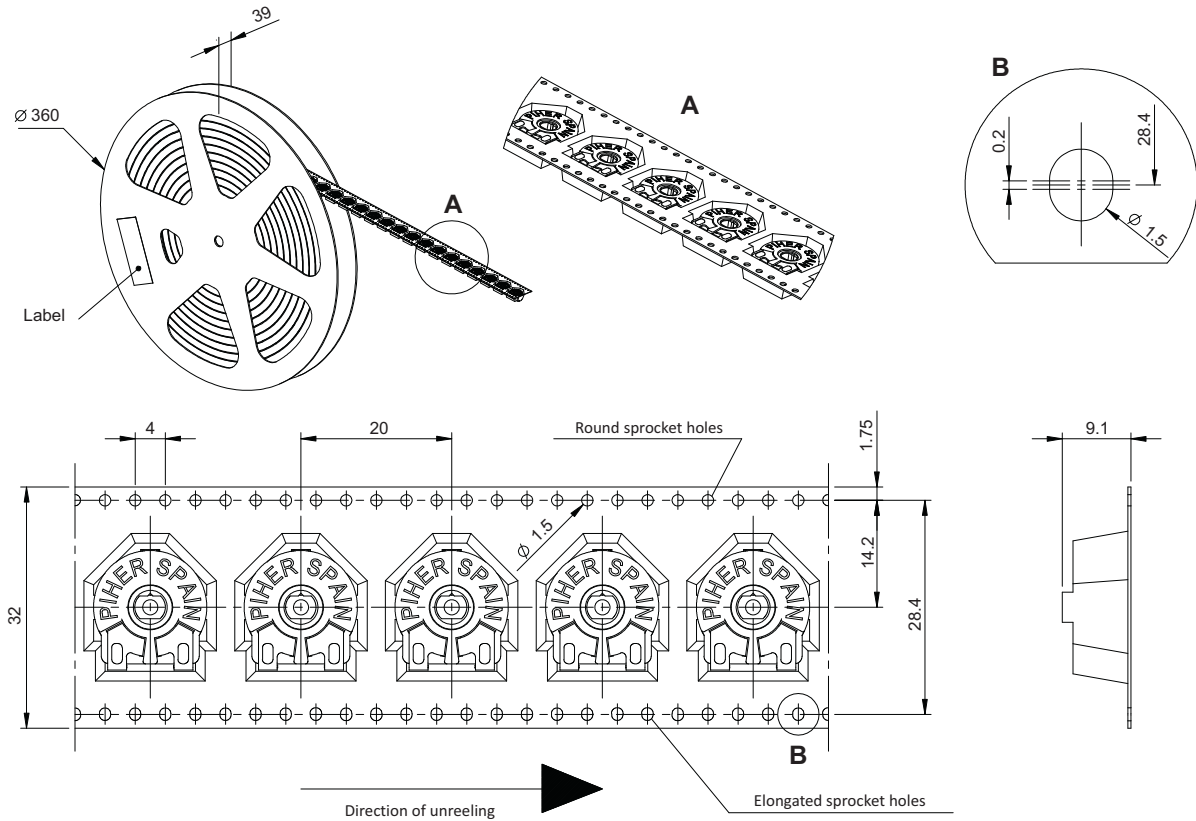
TYPICAL VARIATIONS

ELECTRICAL LIFE	1.000 h. @ 70°C; 0.5 W	± 5 %
MECHANICAL LIFE (CYCLES)	1000 @ 10 CPM ...15 CPM	± 3 % (Rn < 1 MΩ)
TEMPERATURE COEFFICIENT	-40° C; +90° C	± 100 ppm (Rn <100 K)
THERMAL CYCLING	16 h. @ 90° C; 2h. @ -40° C	± 2.5 %
DAMP HEAT	500 h. @ 40° C @ 95% HR	± 5 %
VIBRATION (for each plane X,Y,Z)	2 h. @ 10 Hz. ... 55 Hz.	± 2 %

NOTE: Out of range values may not comply these results.

PACKAGING

BULK: 500pcs per box (80 x 85 x 185 mm.).
EMBOSSED TAPE: 400pcs per reel.



SHAFTS (for N, G and T rotor types, top view)

Hollow model shafts

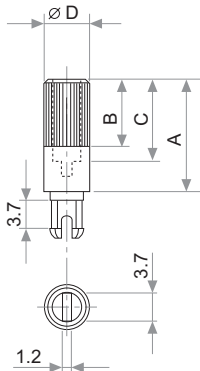


FIG.	A	B	C	D	Ref.
1	12	9	8	6	5272
2	19	9	15	6	5214
5	9.5	6.5	5.5	6	5208
9	35	9	31	6	5216
10	37.8	9	33.8	6	5218
11	35	25	15	6	5209
13	7.8	4.8	3.8	6	5265

Solid model shafts

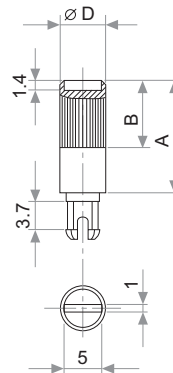


FIG.	A	B	D	Ref.
6	15	9	6	5219
7	16.8	9	6	5220
8	25.3	9	6	5207
12	46	5	6	5227

Slot (1 x 1.4) perpendicular to wiper position. Fig. 12 slot is in line with wiper position.

A = Length (FRS)
B = Knurling length
C = Hollow depth
D = Shaft diameter
FRS = From rotor surface

Shafts, knobs & & thumbwheels are delivered unassembled.

SHAFTS (for N, G and T rotor types, top view)

If you wish to use your own custom plastic shaft/knob/actuator please contact Piher for advice about compatible materials.
Shafts, knobs & thumbwheels are delivered unassembled.

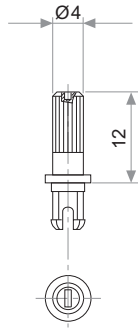


Fig. 3 / Ref. 5372

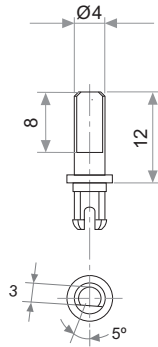


Fig. 15 / Ref. 5217

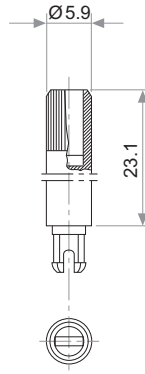


Fig. 17 / Ref. 5210

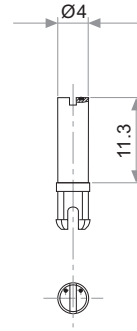


Fig. 18 / Ref. 5271

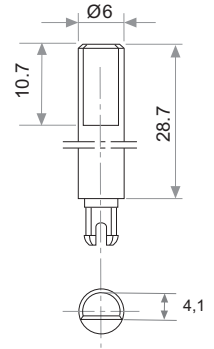


Fig. 19 / Ref. 6032*

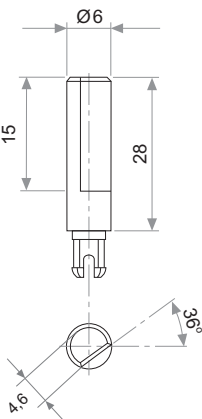


Fig. 20 / Ref. 5369*

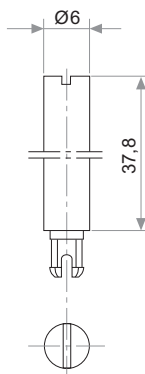


Fig. 21 / Ref. 6031*

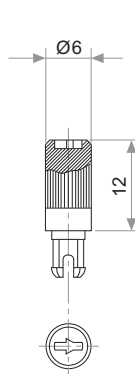


Fig. 22 / Ref. 6029

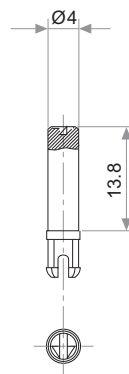


Fig. 23 / Ref. 6022

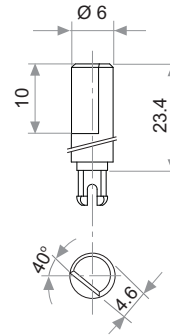


Fig. 29 / Ref. 6162

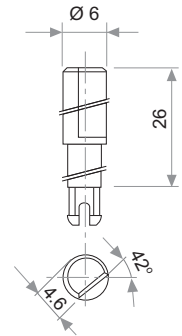


Fig. 25 / Ref. 6059

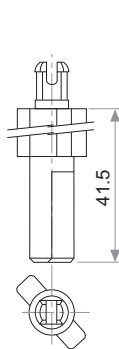


Fig. 27 / Ref. 5268*

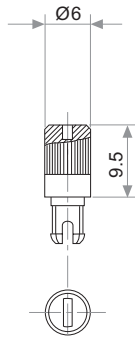


Fig. 28 / Ref. 6055

* Not available in self extinguishable plastic

THUMBWHEEL (for N, G and T rotor types, top view)

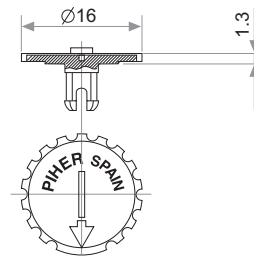


Fig. 4 / Ref. 5371

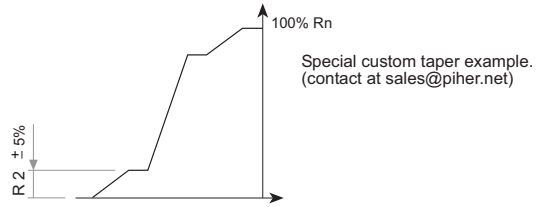
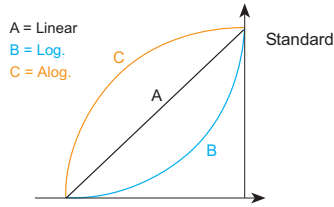
* Not available in self extinguishable plastic

STANDARD VALUES AND TOLERANCES

Resistance Ω	100	200	220	250	470	500	1K	2K	2.2K	2.5K	4.7K	5K	10K	20K	22K	25K	47K	50K	100K	200K	220K	250K	470K	500K	1M	2M	2.5M	4.7M	5M
How to order code	101	201	221	251	471	501	102	202	222	252	472	502	103	203	223	253	473	503	104	204	224	254	474	504	105	205	255	475	505
Standard tolerance	20%																								30%				

(Others upon request)

TAPERS



DETENT CONFIGURATIONS EXAMPLES

This innovative PT's with detents family has been specifically developed to allow the integration of otherwise large and expensive external mechanisms into the body of the potentiometer thus allowing a high range of configurations: special tapers, torque, tolerances, linearity, etc.

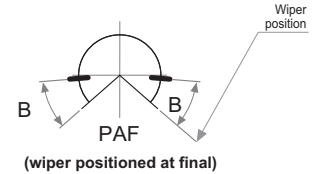
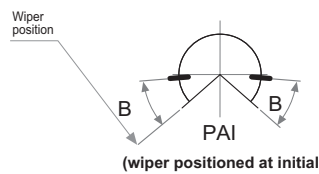
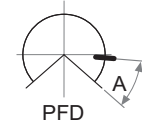
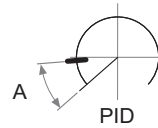
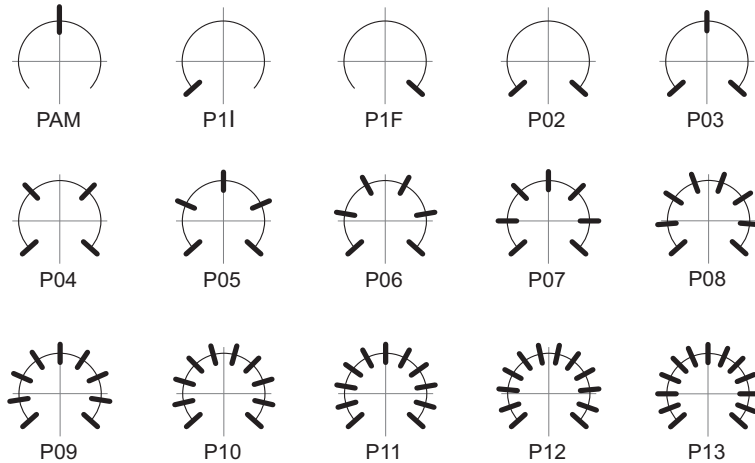
This detent design not only adds a "click" sensation of position, but also offers enormous savings in both cost and space for any given application.

Strong and weak detents can be mixed as per customer's request.

Detent number and positions can be made or fitted to the customer needs or preferences.

Relative detent positions along the total mechanical travel. Unless otherwise specified the detents are evenly spaced (using the end points as reference)

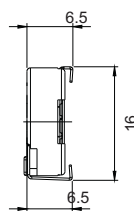
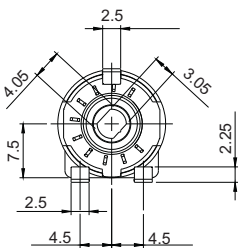
A = 32.625°
B = 34.5°



NOTES FOR DETENTED VERSIONS:

- Some configurations may have a longer leadtime.
- Standard mechanical life is 500 cycles.
- Long life versions are available under request and have the following characteristics at T²:
 - Potentiometers with 1 to 3 detents: up to 10K cycles
 - Potentiometers with 4 and more detents: up to 5K cycles
- Detent torque can vary from 1.2 to 2.5 times the standard potentiometer torque.
- Please consult your nearest Piher supplier if unique non-overlapping values at each detent position or LOG/ALOG tapers are required.
- Different output voltage values can be matched at each detent position (under request).

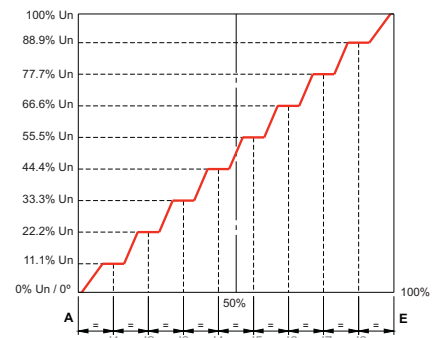
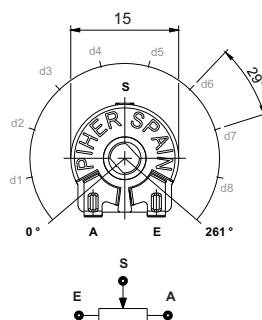
DETENT DETAILS



DETENTS & STEPPED OUTPUTS

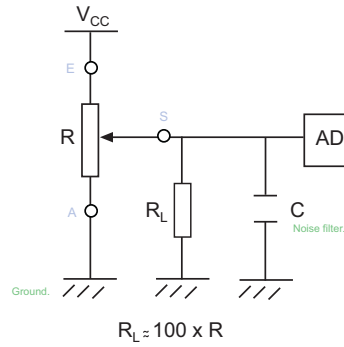
10 detents example

Our potentiometers can feature flattened regions in its output curve. This allows engineers to precisely control constant voltage outputs within the normal rotational range of their potentiometer. These regions can be combined with Piher's detent feature providing a positive mechanical action when rotating the potentiometer into these constant voltage zones.



RECOMMENDED CONNECTIONS

Piher potentiometer's recommended connection circuit for a position sensor or control application. (voltage divider circuit electronic design).



The product information in this catalogue is for reference purposes. Please consult for the most up to date and accurate design information.

Piher Sensors & Controls S.A., its affiliates, agents, and employees, and all persons acting on its or their behalf (collectively, "Piher"), disclaim any and all liability for any errors, inaccuracies or incompleteness contained herein or in any other disclosure relating to any product described herein.

Piher disclaims any and all liability arising out of the use or application of any product described herein or of any information provided herein to the maximum extent permitted by law. The product specifications do not expand or otherwise modify Piher's terms and conditions of sale, including but not limited to the warranty expressed therein, which apply to these products.

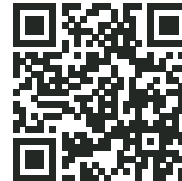
No licence, express or implied, by estoppel or otherwise, to any intellectual property rights is granted by this document or by any conduct of Piher.

The products shown herein are not designed for use in medical, life-saving, or life-sustaining applications unless otherwise expressly indicated. Customers using or selling Piher products not expressly indicated for use in such applications do so entirely at their own risk and agree to fully indemnify Piher for any damages arising or resulting from such use or sale. Please contact authorised Piher personnel to obtain written terms and conditions regarding products designed for such applications.

Product names and markings noted herein may be trademarks of their respective owners.

Information contained in and/or attached to this catalogue may be subject to export control regulations of the European Community, USA, or other countries. Each recipient of this document is responsible to ensure that usage and/or transfer of any information contained in this document complies with all relevant export control regulations. If you are in any doubt about the export control restrictions that apply to this information, please contact the sender immediately. For any Piher Exports, Note: All products / technologies are EAR99 Classified commodities. Exports from the United States are in accordance with the Export Administration Regulations. Diversion contrary to US law is prohibited.

Piher is an Amphenol™ company.



RoHS
compliant

All Piher products can be adapted to meet customer's requirements. Due to continuous process improvement, specifications are subject to change without notice. Please always use the datasheets published at our website www.piher.net for the most up-to-date information.

v160818

Contact

Piher Sensors & Controls SA
Polígono Industrial Municipal
Vial T2 N°22
31500 Tudela - Spain
Tel: +34-948-820450

sales@piher.net

www.piher.net

Mouser Electronics

Authorized Distributor

Click to View Pricing, Inventory, Delivery & Lifecycle Information:

[Amphenol:](#)

[PSC15NV60-103A0505-PM](#) [PSC15NV50-103A1010-P10-PM](#) [PSC15NV50-502A0505](#) [PSC15NV50-103A1010-P34-PM](#)