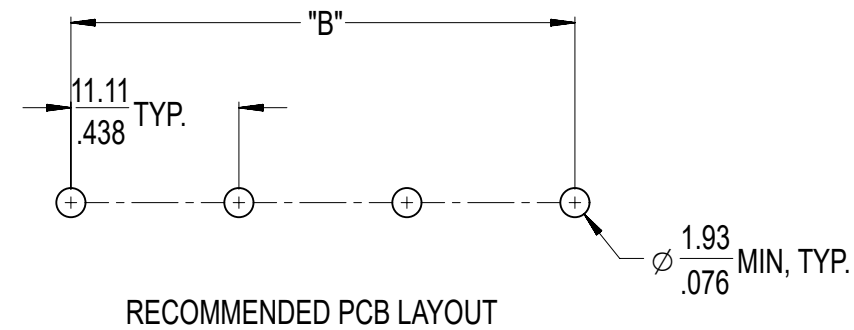


| QTY CKTS | DIM "A" | | DIM "B" | | MATERIAL NO. -A-C OPT | MATERIAL NO. -A-C-50 OPT |
|----------|---------|-------|----------|------------|-----------------------|--------------------------|
| | MM | INCH | ±0.25 MM | ±.010 INCH | | |
| 3 | 35.7 | 1.40 | 22.23 | 0.875 | ----- | 387320003 |
| 4 | 46.8 | 1.84 | 33.34 | 1.313 | 387319804 | ----- |
| 6 | 69.0 | 2.72 | 55.56 | 2.188 | 387319806 | ----- |
| 7 | 80.1 | 3.15 | 66.68 | 2.625 | ----- | 387320007 |
| 8 | 91.2 | 3.59 | 77.79 | 3.063 | 387319808 | ----- |
| 9 | 102.3 | 4.03 | 88.90 | 3.500 | ----- | 387320009 |
| 12 | 135.7 | 5.34 | 122.24 | 4.813 | 387319812 | ----- |
| 13 | 146.8 | 5.78 | 133.35 | 5.250 | ----- | 387320013 |
| 14 | 157.9 | 6.22 | 144.46 | 5.688 | ----- | 387320014 |
| 15 | 169.0 | 6.65 | 155.58 | 6.125 | ----- | 387320015 |
| 16 | 180.1 | 7.09 | 166.69 | 6.563 | 387319816 | 387320016 |
| 17 | 191.2 | 7.53 | 177.80 | 7.000 | 387319817 | 387320017 |
| 18 | 202.3 | 7.97 | 188.91 | 7.438 | 387319818 | 387320018 |
| 19 | 213.5 | 8.40 | 200.03 | 7.875 | ----- | 387320019 |
| 20 | 224.6 | 8.84 | 211.14 | 8.313 | ----- | 387320020 |
| 21 | 235.7 | 9.28 | 222.25 | 8.750 | 387319821 | 387320021 |
| 22 | 246.8 | 9.72 | 233.36 | 9.188 | 387319822 | 387320022 |
| 23 | 257.9 | 10.15 | 244.48 | 9.625 | 387319823 | 387320023 |
| 24 | 269.0 | 10.59 | 255.59 | 10.063 | ----- | 387320024 |
| 25 | 280.1 | 11.03 | 266.70 | 10.500 | ----- | 387320025 |
| 26 | 291.2 | 11.47 | 277.81 | 10.938 | 387319826 | 387320026 |
| 27 | 302.4 | 11.90 | 288.93 | 11.375 | 387319827 | 387320027 |
| 28 | 313.5 | 12.34 | 300.04 | 11.813 | 387319828 | 387320028 |
| 29 | 324.6 | 12.78 | 311.15 | 12.250 | 387319829 | 387320029 |
| 30 | 335.7 | 13.22 | 322.26 | 12.688 | 387319830 | 387320030 |



NOTES:

1. MATERIAL: SEE DETAILS
2. FINISHES: SEE DETAILS
3. PRODUCT SPECIFICATION: NOT REQUIRED
4. "XX" REFERS TO THE NUMBER OF CIRCUITS
5. ROHS COMPLIANT

| ITEM | QTY. | DESCRIPTION | MATERIAL | FINISH |
|------|------|---------------------------------|-----------------|--------------------|
| 4 | XX | #8-32 SCREW (OPT -A) | BRASS | NICKEL PLATE |
| 3 | XX | #8-32 SCREW W/WASH (OPT -A,-50) | STEEL | ZN, CLEAR CHROMATE |
| 2 | XX | TERMINAL, PC 8-32 | BRASS | TIN PLATE |
| 1 | 1 | INSULATOR, SR, NO MTG | POLYESTER (PBT) | BLACK |

THIS DRAWING CONTAINS INFORMATION THAT IS PROPRIETARY TO MOLEX ELECTRONIC TECHNOLOGIES, LLC AND SHOULD NOT BE USED WITHOUT WRITTEN PERMISSION

| | | | | | |
|--|--------|--|---|----------|----------|
| DIMENSION UNITS | SCALE | CURRENT REV DESC: REMOVED OBSOLETE PART NUMBERS AS PER PCN#515181. | molex | | |
| mm/IN | 2:1 | | | | |
| GENERAL TOLERANCES (UNLESS SPECIFIED) | | | 11.11 [.438] SR BTS ASY, PC TERMINAL, NO MTG, OVERSIZED SCREW, -A-C | | |
| 4 PLACES | ± | ± | PRODUCT CUSTOMER DRAWING | | |
| 3 PLACES | ± | ± 0.005 | DOCUMENT NUMBER | | |
| 2 PLACES | ± 0.13 | ± 0.01 | SD-38731-005 | | |
| 1 PLACE | ± 0.3 | ± | DOC TYPE | DOC PART | REVISION |
| 0 PLACES | ± | ± | PSD | 001 | B1 |
| ANGULAR TOL | ± 2.0° | | MATERIAL NUMBER | | |
| DRAFT WHERE APPLICABLE MUST REMAIN WITHIN DIMENSIONS | | | CUSTOMER | | |
| THIRD ANGLE PROJECTION | | | SHEET NUMBER | | |
| DRAWING | | | SEE TABLE | | |
| SERIES | | | GENERAL MARKET | | |
| B-SIZE | | | 1 OF 1 | | |
| 38731 | | | | | |