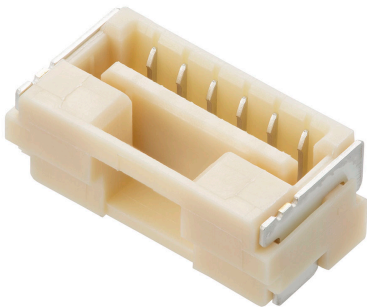




Part Number : [5023821270](#)
Product Description : 1.25mm Pitch CLIK-Mate Wire-to-Board PCB Receptacle, Single Row, Vertical, Tin Plating, 12 Circuits
Series Number : 502382
Status : Active
Product Category : PCB Headers and Receptacles



Documents & Resources


Drawings
[Drawing 5023821270_sd.pdf](#)

3D Models and Design Files
[3D Model 5023821270_stp.zip](#)

Specifications
[Application Specification AS-502380-002-001.pdf](#)
[Packaging Specification SPK-502382-001-001.pdf](#)
[Product Specification PS-502382-001-001.pdf](#)

Product Environment Compliance

Compliance

GADSL/IMDS	Compliant with Exemption 44; 33
China RoHS	
EU ELV	Not Relevant
Low-Halogen Status	Not Low-Halogen per IEC 61249-2-21
REACH SVHC	Not Contained per D(2024)4144-DC (27 June 2024)
EU RoHS	Compliant per EU 2015/863

[Multiple Part Product Compliance Statements](#)
- Eu RoHS
- REACH SVHC
- Low-Halogen

[Multiple Part Industry Compliance Documents](#)

- IPC 1752A Class C
- IPC 1752A Class D
- Molex Product Compliance Declaration
- IEC-62474
- chemSHERPA (xml)

EU RoHS Certificate of Compliance

Part Details

General

Status	Active
Category	PCB Headers and Receptacles
Series	502382
Description	1.25mm Pitch CLIK-Mate Wire-to-Board PCB Receptacle, Single Row, Vertical, Tin Plating, 12 Circuits
Application	Signal, Wire-to-Board
Component Type	PCB Receptacle
Product Family	CLIK-Mate Wire-to-Board Connectors
Product Name	CLIK-Mate
UPC	822350895293

Agency

UL	E29179
----	--------

Electrical

Current - Maximum per Contact	1.0A
Voltage - Maximum	50V AC (RMS)/DC

Physical

Circuits (Loaded)	12
Circuits (maximum)	12
Color - Resin	Natural
Durability (mating cycles max)	30
Glow-Wire Capable	No
Guide to Mating Part	Yes

Keying to Mating Part	Yes
Lock to Mating Part	Yes
Mated Height	7.80mm
Material - Metal	Copper Alloy
Material - Plating Mating	Tin
Material - Plating Termination	Tin
Material - Resin	High Temperature Thermoplastic
Net Weight	526.401/mg
Number of Rows	1
Orientation	Vertical
Packaging Type	Embossed Tape on Reel
PCB Locator	No
PCB Retention	Yes
Pitch - Mating Interface	1.25mm
Pitch - Termination Interface	1.25mm
Plating min - Mating	1.016µm
Plating min - Termination	1.016µm
Polarized to Mating Part	Yes
Polarized to PCB	No
Stackable	No
Temperature Range - Operating	-40° to +105°C
Termination Interface Style	Surface Mount

Mates With / Use With

Mates with Part(s)

Description	Part Number
1.25mm Pitch CLIK-Mate Single Row Plug Housings	<u>502380</u>