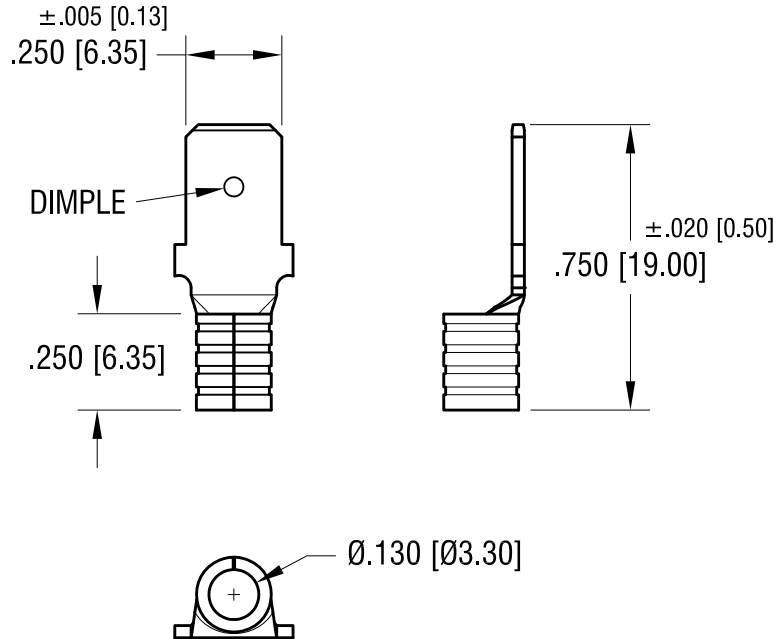


THIS DOCUMENT IS THE PROPERTY OF
KEYSTONE ELECTRONICS CORP. AND
SHALL NOT BE REPRODUCED, DISTRIBUTED
OR USED AS A BASIS FOR MANUFACTURE
WITHOUT PRIOR WRITTEN PERMISSION
FROM KEYSTONE ELECTRONICS CORP.

ACTUAL SIZE



NOTE:

1. ACCOMMODATES WIRE RANGE 12/10 AWG

11.30.23	PER NEW TOOLING CHANGE AS PER ECN 23-229	B
11.17.12	SPLIT C/M DRAWING, ADD "K" CHANGE AS PER ECN 12-156	A
DATE	DESCRIPTION	REV.

KEYSTONE ELECTRONICS CORP.			
www.keyelco.com • NEW HYDE PARK NY 11040 • Tel (516)328-7500			
PART NAME		QUICK-FIT TERMINAL, MALLE	
MATERIAL		.032 [0.81] TH'K COPPER	
FINISH		DRN BY	DATE
TIN PLATE		HAMILTON	11.14.12
		APP'D	SCALE
TOLERANCES INCH [MM] DECIMAL $\pm .010$ [± 0.25] ANGULAR $\pm 1^\circ$ UNLESS OTHERWISE SPECIFIED		CODE	DWG NO.
		C	8285