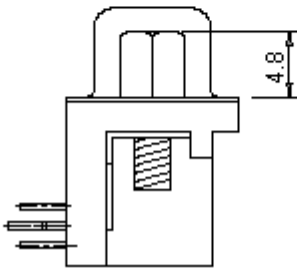
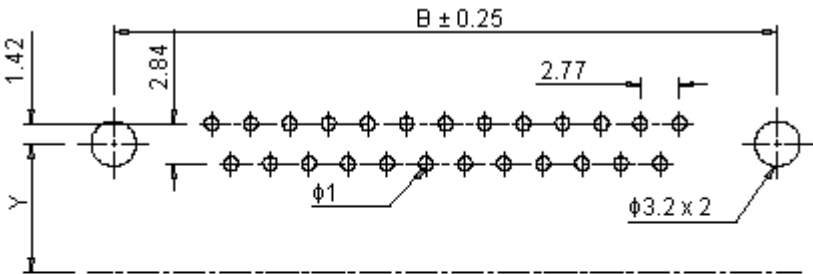
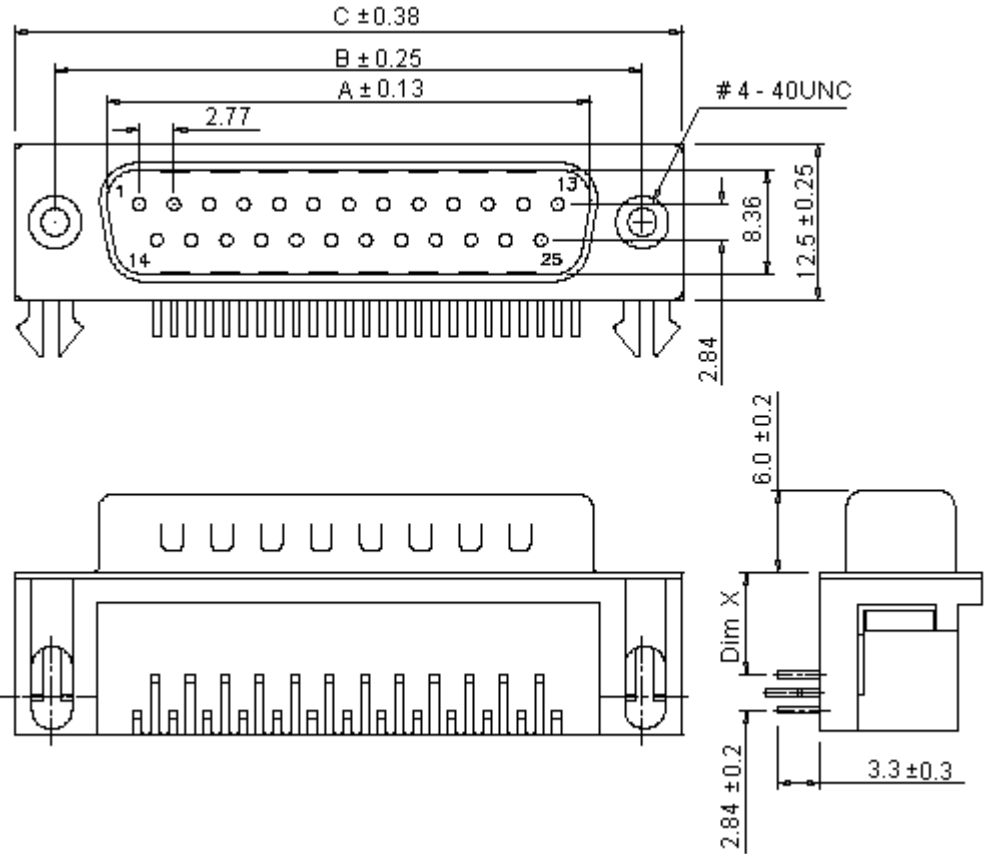


D Sub PCB



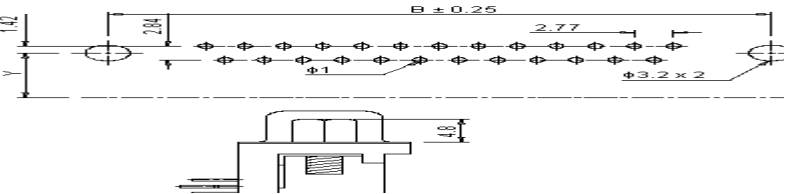
Right Angle



Dimensions : Millimetres

Specification Table

Positions	A	B	C	X	Y
9	16.92	24.99	30.81	8.08	9.5



D Sub PCB

Right Angle

Specifications:

- Current rating : 5 A ac, 3 A dc
- Voltage rating : 250 V ac / dc
- Temperature range : -40 to + 85°C
- Maximum contact resistance : 30 mΩ
- Minimum insulation resistance : 1,000 MΩ
- Withstanding voltage : 1,000 V ac / minute
- Operating temperature range : - 40 to + 85°C

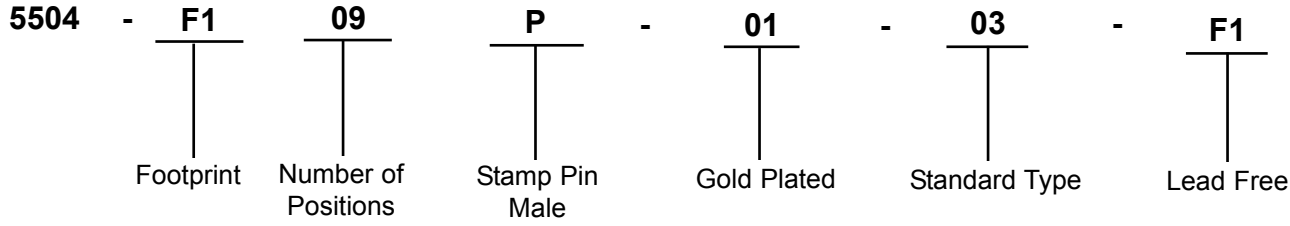
Material and Finish:

- Insulator : High temperature plastic
- Contact : Copper alloy nickel undercoated, selective gold plated
- Finish : Metal iron with tin plated

Part Number Table

Description	Part Number
Plug, D, PCB, R/A, 9Way	5504F1-09P-01-03-F1
Plug, D, PCB, R/A, 15Way	5504F1-15P-01-03-F1
Plug, D, PCB, R/A, 25Way	5504F1-25P-01-03-F1
Plug, D, PCB, R/A, 37Way	5504F1-37P-01-03-F1
Plug, Dsub, R/A, PCB, 9Way	5504F1-09P-02A-03
Plug, Dsub, R/A, PCB, 15Way	5504F1-15P-02A-03
Plug, Dsub, R/A, PCB, 25Way	5504F1-25P-02A-03
Socket, Dsub, R/A, PCB, 9Way	5504F1-09S-02A-03
Socket, Dsub, R/A, PCB, 15Way	5504F1-15S-02A-03
Socket, Dsub, R/A, PCB, 25Way	5504F1-25S-02A-03

Part Number Explanation:



- Number of Positions : 09 = 9 Positions
- Stamp Pin Male : P = Stamp Pin Male
- Selective Gold : 01 = Gold Plated

