



QSFP/QSFP+

TE Internal #: 2214574-7

QSFP+, Cage Assembly with Integrated Connector, .8mm [.032in]  
Centerline, Sealable, Signal, Operating Temperature Range -55 – 105 °C [-67 – 221 °F]

[View on TE.com >](#)

Connectors > Pluggable IO Connectors & Cages



Pluggable I/O Product Type: **Cage Assembly with Integrated Connector**

Centerline (Pitch): **.8 mm [ .032 in ]**

Sealable: **Yes**

Circuit Application: **Signal**

Operating Temperature Range: **-55 – 105 °C [ -67 – 221 °F ]**

Features

Product Type Features

Cage Type	Stacked
Pluggable I/O Product Type	Cage Assembly with Integrated Connector
Sealable	Yes
Form Factor	QSFP+

Configuration Features

Number of Rear EONs per Port Column	0
Number of Positions	152
Number of Ports	4
Port Matrix Configuration	2 x 2

Electrical Characteristics

Data Rate (Max)	14 Gb/s
-----------------	---------

Contact Features

Contact Mating Area Plating Material Thickness	.76 µm[30 µin]
Contact Mating Area Plating Material	Gold
Contact Underplating Material	Tin
PCB Contact Termination Area Plating Material	Gold

Termination Features



Termination Post & Tail Length	2 mm[.079 in]
Termination Method to PCB	Through Hole - Press-Fit

Housing Features

Cage Material	Nickel Silver
Centerline (Pitch)	.8 mm[.032 in]

Dimensions

PCB Thickness (Recommended)	1.57 mm[.062 in]
-----------------------------	------------------

Usage Conditions

Operating Temperature Range	-55 – 105 °C[-67 – 221 °F]
-----------------------------	----------------------------

Operation/Application

Pluggable I/O Applications	SFP+ Stacked Belly-to-Belly
Heat Sink Compatible	No
Circuit Application	Signal

Industry Standards

UL Flammability Rating	UL 94V-0
------------------------	----------

Packaging Features

Packaging Method	Box & Tray
------------------	------------

Other

Included Lightpipe	Yes
EMI Containment Feature Type	Elastomeric Gasket

Product Compliance

For compliance documentation, visit the product page on TE.com>


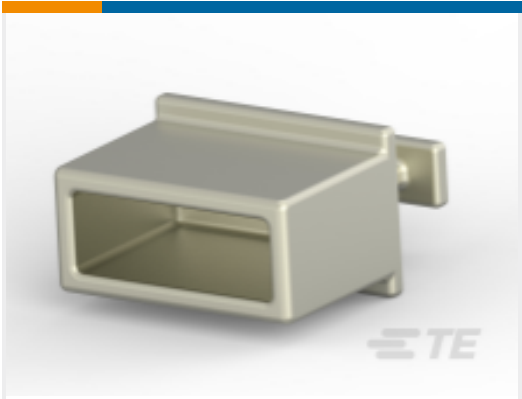







EU RoHS Directive 2011/65/EU	Compliant
EU ELV Directive 2000/53/EC	Compliant
China RoHS 2 Directive MIIT Order No 32, 2016	No Restricted Materials Above Threshold
EU REACH Regulation (EC) No. 1907/2006	Current ECHA Candidate List: JUNE 2024 (241) Candidate List Declared Against: JUNE 2024 (241) Does not contain REACH SVHC
Halogen Content	Not Low Halogen - contains Br or Cl > 900 ppm.
Solder Process Capability	Not applicable for solder process capability



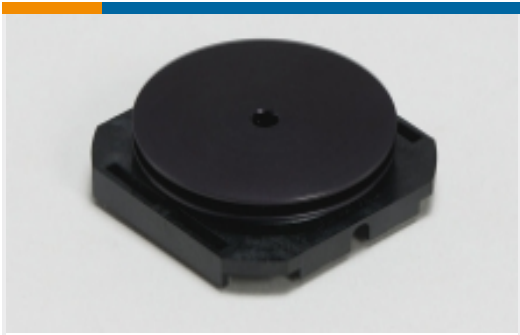
Product Compliance Disclaimer

This information is provided based on reasonable inquiry of our suppliers and represents our current actual knowledge based on the information they provided. This information is subject to change. The part numbers that TE has identified as EU RoHS compliant have a maximum concentration of 0.1% by weight in homogenous materials for lead, hexavalent chromium, mercury, PBB, PBDE, DBP, BBP, DEHP, DIBP, and 0.01% for cadmium, or qualify for an exemption to these limits as defined in the Annexes of Directive 2011/65/EU (RoHS2). Finished electrical and electronic equipment products will be CE marked as required by Directive 2011/65/EU. Components may not be CE marked. Additionally, the part numbers that TE has identified as EU ELV compliant have a maximum concentration of 0.1% by weight in homogenous materials for lead, hexavalent chromium, and mercury, and 0.01% for cadmium, or qualify for an exemption to these limits as defined in the Annexes of Directive 2000/53/EC (ELV). Regarding the REACH Regulation, the information TE provides on SVHC in articles for this part number is based on the latest European Chemicals Agency (ECHA) ‘Guidance on requirements for substances in articles’ posted at this URL: <https://echa.europa.eu/guidance-documents/guidance-on-reach>

Compatible Parts

 <p>TE Part # CAT-C11-H50111 QSFP-Four SFP+ I/O Cable Assembly 30 AWG</p>	 <p>TE Part # 1888810-2 EMI/Dust Cover,XFP And QSFP</p>	 <p>TE Part # 2110819-1 QSFP+ Enh EVERCLEAR PT Conn</p>	 <p>TE Part # 1-2053638-6 C/A, QSFP, 0.5M, P1-P2, UNEQUALIZED</p>
 <p>TE Part # CAT-C11-H5011 QSFP-Four SFP+ I/O Cable Assembly 28 AWG</p>	 <p>TE Part # CAT-C11-H5011142 QSFP to QSFP I/O Cable Assembly: 33 AWG</p>	 <p>TE Part # 2202165-4 QSFP TO QSFP, 26AWG, FDR, 4.0 METER</p>	 <p>TE Part # 2202165-5 QSFP TO QSFP, 26AWG, FDR, 5.0 METER</p>
 <p>TE Part # 2821033-8 QSFP TO [4]SFP+, 28G, 1M, 33AWG</p>			

Also in the Series | QSFP/QSFP+



Heat Sinks(1)



Light Pipes(8)



Pluggable I/O Cable Assemblies(19)



Pluggable IO Connectors & Cages(154)

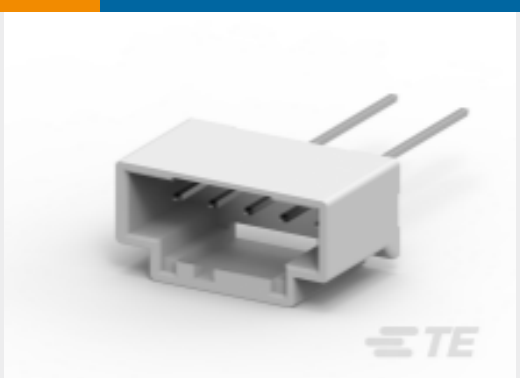
Customers Also Bought



TE Part #2-2291728-1  
D3200M FMLB REC HSG 12P SSKEY



TE Part #1-2176408-6  
3560 4K7 5%



TE Part #5-2232546-1  
GI2.5 HDR ASS 5P NC NO BOSS TAPE



TE Part #2-1649328-8  
RT334005



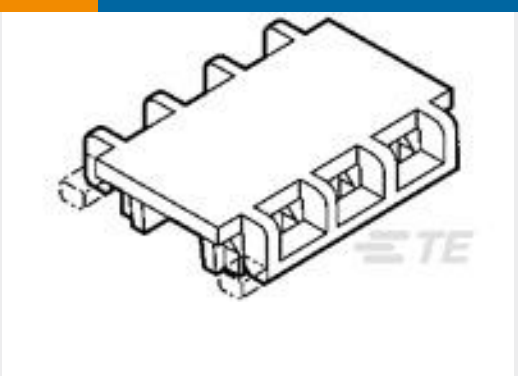
TE Part #6116314-2  
STK MJ ASSY,2X6,8P,CAT5,W/LED



TE Part #NB19994001  
VERSAFIT-1/16-6-SP



TE Part #NB20464001  
VERSAFIT-3/32-2-SP



TE Part #1-643077-9  
19P MTA100 MOLDED COVER F/T



TE Part #2-1393092-0  
MT333110

Documents

Product Drawings

2X2 QSFP CAGE AND PT CONNECTOR ASSEMBLY

English

CAD Files

3D PDF

3D

Customer View Model

ENG\_CVM\_CVM\_2214574-7\_B.2d\_dxf.zip



English

Customer View Model

[ENG\\_CVM\\_CVM\\_2214574-7\\_B.3d\\_igs.zip](#)

English

Customer View Model

[ENG\\_CVM\\_CVM\\_2214574-7\\_B.3d\\_stp.zip](#)

English

By downloading the CAD file I accept and agree to the [Terms and Conditions](#) of use.

Product Specifications

[Application Specification](#)

English

[Application Specification](#)

English