

**SPECIFICATIONS**

**ELECTRICAL**

RESISTANCE RANGE ----- SEE CHART  
 RESISTANCE TOLERANCE ----- ±3%  
 LINEARITY TOLERANCE ----- ±0.25%  
 RESOLUTION ----- SEE CHART  
 END RESISTANCE AT TERM. ----- 1 OHM OR 0.1%  
 ELECTRICAL ANGLE ----- 3600±.5°  
 ELECTRICAL NOISE ----- 100 OHM MAX.  
 POWER RATING ----- 1.5 WATTS  
 MAXIMUM VOLTAGE ----- 450 VOLTS  
 INSULATION RESISTANCE ----- 1,000 MEGOHMS @ 500 V.D.C.  
 DIELECTRIC STRENGTH ----- 1,000 V.A.C.

**MECHANICAL**

NUMBER OF TURNS ----- 10  
 MECHANICAL ANGLE ----- 3600±15°-0°  
 TORQUE ----- 0.4 OZ. IN. MAX.  
 STOP STRENGTH ----- 20 OZ. IN. MAX.  
 WEIGHT ----- 0.35 OZ.

**ENVIRONMENTAL**

OPERATING TEMPERATURE ----- -55°C to +105°C  
 TEMPERATURE COEFFICIENT ----- SEE CHART  
 VIBRATION ----- 10HZ TO 2000HZ 15G  
 SHOCK ----- 50G 11ms  
 MOISTURE RESISTANCE ----- 40°C 95%RH 120 HOURS  
 ROTATIONAL LIFE ----- 1,000,000 SHAFT REVOLUTIONS

**MATERIALS**

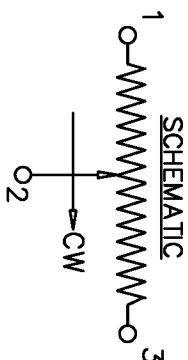
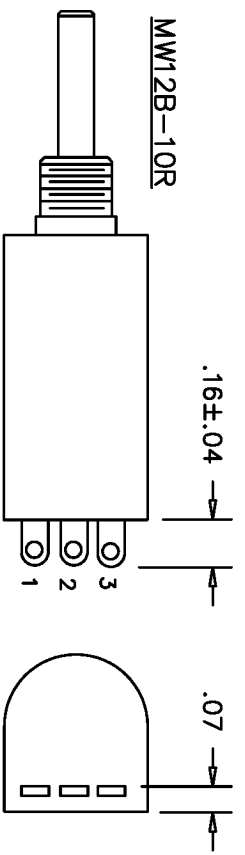
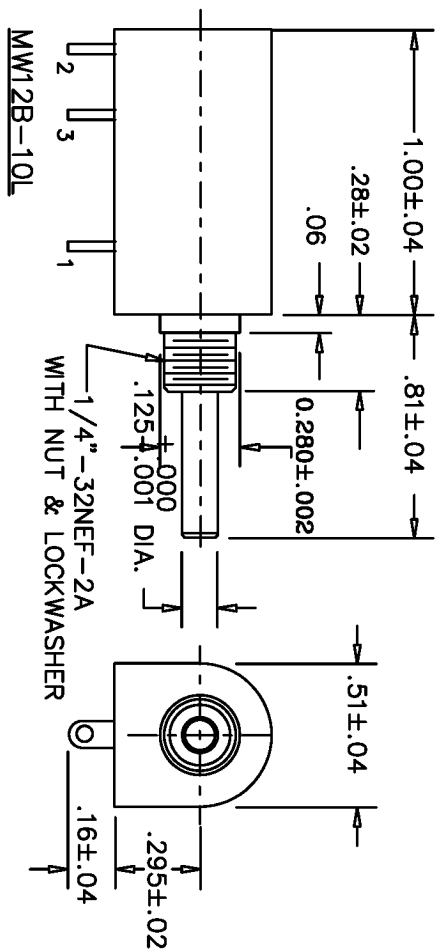
HOUSING ----- HIGH TEMPERATURE PLASTIC  
 SHAFT ----- STAINLESS STEEL  
 BUSHING ----- BRASS  
 TERMINALS ----- GOLD PLATED  
 ELEMENT ----- WIREWOUND

RESISTANCE	20	50	100	200	500	1K	2K	5K	10K	20K	50K	100K
RESOLUTION	.070	.050	.059	.054	.039	.040	.033	.024	.021	.016	.012	.009
TEMPERATURE COEFFICIENT, PPM/°C	700	700	80	80	80	20	20	20	20	20	20	20

SCALE NONE  
 DATE: 4-3-79  
 BY

**TOLERANCES**  
 XX = +/- .010" FRACT. = +/- 1/64"  
 XXX = +/- .005" ANGLES = +/- 1/2°  
 ALL SPECIFICATIONS SUBJECT TO CHANGE WITHOUT NOTICE.

REV.	BY	DATE	PART NO.
C	BT	11-21 87	MW12B-10
			MECH. ANGLE WAS 3600±.5° ADDED OPERATING TEMPERATURE



THIS DOCUMENT CONTAINS PROPRIETARY DATA OF POLARIS INDUSTRIAL ENTERPRISES, INC. NO DISCLOSURE, REPRODUCTION, OR USE OF ANY PART THERE OF MAY BE MADE EXCEPT BY WRITTEN PERMISSION.

TITLE  
 MULTI-TURN  
 POTENTIOMETER

ETI  
 SYSTEMS  
 CARLSBAD  
 CALIFORNIA  
 PART NO.  
 MW12B-10

# Mouser Electronics

Authorized Distributor

Click to View Pricing, Inventory, Delivery & Lifecycle Information:

## ETI Systems:

[MW12B-3R-10K](#) [MW12B-10L-1K](#) [MW12B-10L-5K](#) [MW12B-10L-10K](#) [MW12B-10R-1K](#) [MW12B-10R-5K](#) [MW12B-10R-10K](#) [MW12B-5R-10K](#)