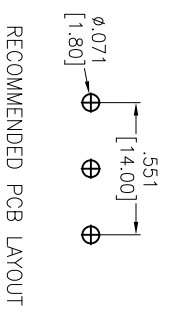
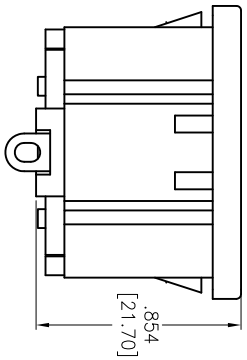
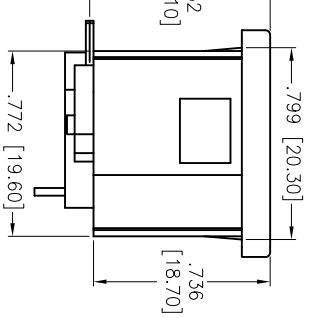
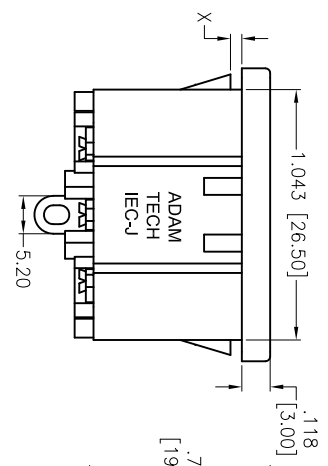
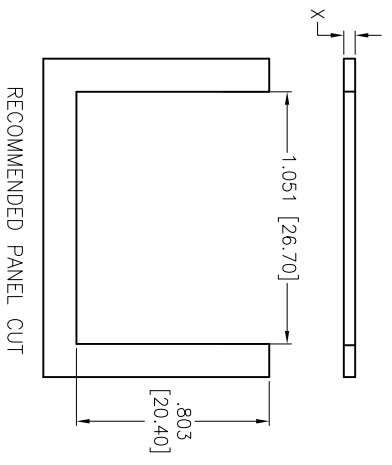
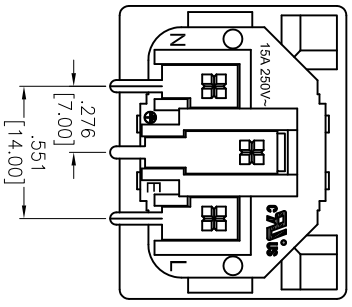
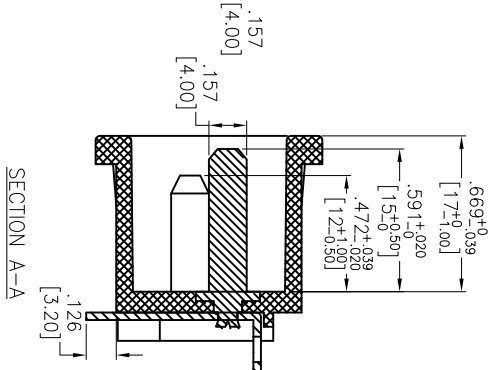
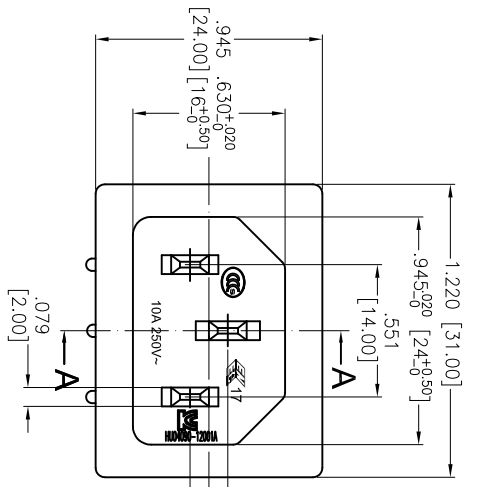


APPROVED: _____
 DATE: _____ TITLE: _____

Rev	AWO #	Description	Date	Appr
-		RELEASED	6/17/05	
A		REDRAWN	11/30/12	



SPECIFICATIONS:
 Material: Insulator: Nylon 66, rated UL 94V-0
 Insulator color: Copper Alloy
 Contacts: Copper Alloy
 Plating: Nickel over Copper underplate overall
 PCB pins: Tin over Copper underplate
 Electrical: Operating voltage: 250 VAC
 Current rating: 15A 250V (C-ULus)
 15A 250V (ENEC & CCC & KC)
 Insulation resistance: 100 Mohms min @ 500 VDC
 Dielectric withstanding voltage: 3,000 VAC for 1 minute
 Environmental: Lead free, RoHS compliant

PART NUMBER	DIMENSIONS
IEC-J-4-120	.047 [1.20]
IEC-J-4-150	.059 [1.50]
IEC-J-4-200	.079 [2.00]
IEC-J-4-300	.118 [3.00]

UNLESS OTHERWISE SPECIFIED
 ALL DIMENSIONS ARE INCHES [MM]
 TOLERANCES: EXCEPT AS NOTED
 INCHES Holes ±.10
 .XX ±.020 ØXXX ±.015
 .XXX ±.015 ØXXX ±.010
 APPROVALS DATE

ADAM TECH
 909 Rahway Avenue, Union, NJ 07083
 Phone: 908-687-5000 Fax: 908-687-5710
 TITLE: IEC MALE INLET, SNAP-IN PANEL MOUNT
 RIGHT ANGLE, PCB TAILS

6 5 4 3 2 1

DRAWN	SS	6/17/05	SIZE	PART NO.	REV.
CHECKED			X	IEC-J-4-XXX	A
APPROVED			REF:	S00087C	
			SCALE:	NTS	SHEET 1 OF 1

