

Product data sheet

Subminiature connectors

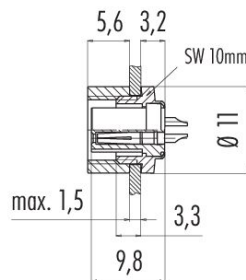


| | |
|---------------------|---|
| Product description | M9 Female panel mount connector, Contacts: 8, unshielded, solder, IP40 |
| Area | series 711 |
| Part no. | 09 0482 00 08 |

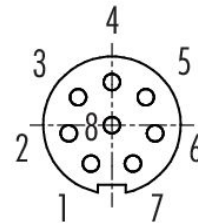
Illustration



Scale drawing



Contact arrangement (Plug-in side)



You can find the component part drawing and assembly instructions on the next page.

Technical data

General features

| | |
|---------------------------|-------------------------------|
| Part no. | 09 0482 00 08 |
| Connector design | Female panel mount connector |
| Version | Connector socket straight |
| Connector locking system | screw |
| Termination | solder |
| Degree of protection | IP40 |
| Cross-sectional area | 0.14 mm ² / AWG 26 |
| Temperature range from/to | -40 °C / 85 °C |
| Mechanical operation | > 500 Mating cycles |
| Weight (g) | 2.99 |
| Customs tariff number | 85369010 |
| Country of Origin | DE |

Electrical parameters

| | |
|---------------------------|----------------------|
| Rated voltage | 125 V |
| Rated impulse voltage | 1500 V |
| Rated current | 1.0 A |
| Insulation resistance | ≥ 10 ¹⁰ Ω |
| Pollution degree | 1 |
| Overtoltage category | II |
| Insulating material group | III |
| EMC compliance | unshielded |

Product data sheet

Subminiature connectors



Product description **M9 Female panel mount connector, Contacts: 8, unshielded, solder, IP40**

Area **series 711**
Part no. **09 0482 00 08**

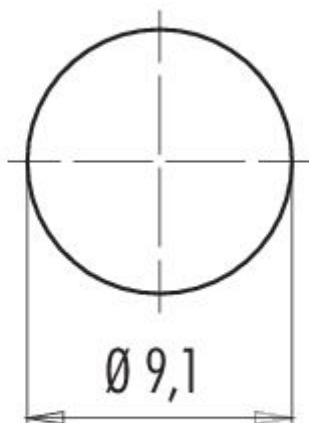
Material

| | |
|-----------------------|--------------------------------------|
| Contact body material | PA (UL94 V-0) |
| Contact material | CuSn (bronze) |
| Contact plating | Au (gold) |
| REACH SVHC | CAS 7439-92-1 (Lead) |
| SCIP number | 16ed6828-7f1a-473e-952a-557cdb01fca1 |

Classifications

| | |
|-------------|-------------|
| eCl@ss 11.1 | 27-44-01-09 |
| ETIM 9.0 | EC003569 |

Assembly instructions / Panel cut-out

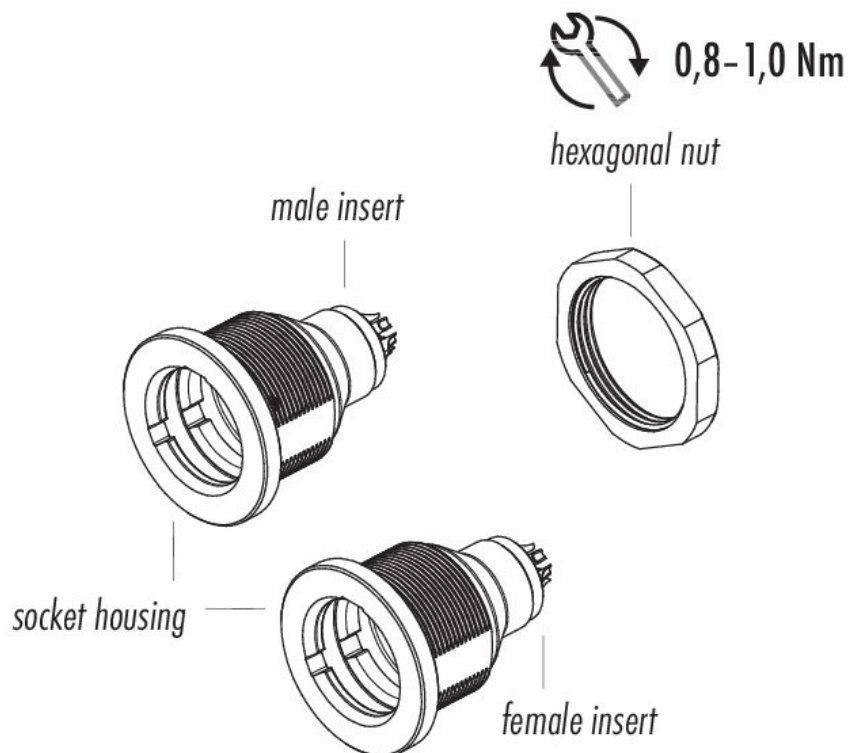


Product data sheet
Subminiature connectors

Product description **M9 Female panel mount connector, Contacts: 8, unshielded, solder, IP40**

Area **series 711**
Part no. **09 0482 00 08**

Component part drawing



| | |
|---------------------|---|
| Product description | M9 Female panel mount connector, Contacts: 8, unshielded, solder, IP40 |
| Area | series 711 |
| Part no. | 09 0482 00 08 |

Security notices

The connector must not be plugged or unplugged under load. Non-observance and improper use can result in personal injury.

The connectors have been developed for applications in plant engineering, control and electrical equipment construction. The user is responsible for checking whether the connectors can also be used in other areas of application.

Connectors which are used in circuits with voltages dangerous to the touch may only be installed and used by, or under the supervision of, persons with electrical engineering training, taking into account the applicable regulations and standards.

The user must take suitable safety precautions to ensure that the connector cannot be accidentally disconnected.

The plug connector is not suitable for mains voltages Please observe the pollution degree and the overvoltage category. For further information, please refer to the download center "Technical Information".