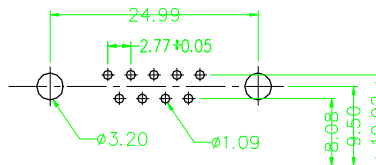
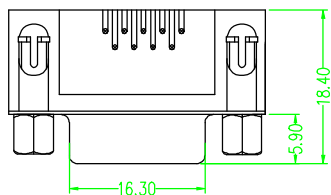
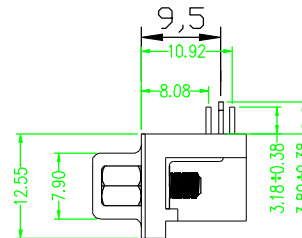
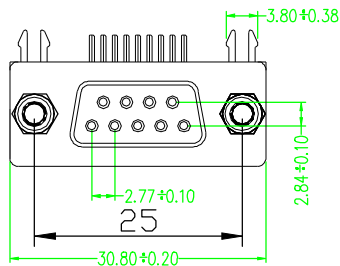


# Kinghelm®

SIDE	DATE	DESCRIPTION	APPROVER
△			
△			



P.C.B. PLYOUT



**一、MATERIAL:**

- 1.Insulator: PBT+30%Glass Fiber (UL94V-0)
- 2.Contact: Brass
- 3.Contact Plated: Gold Flash over Tin Or Glod Plated Or Tin Plated
- 4.Shell: Steel,Nickel Plated

**二、SPECIFICATION:**

- 1.Current Rating: 5 AMPS
- 2.Insulation Resistance: 5000MΩ MIN. At 500VDC
- 3.Dielectric Strength: 500V for One minute
- 4.Operation Temperature: -55° C~+105° C.

电话 (tel)	0755-28190160	公 差		深圳市金航标电子有限公司			
传真 (fax)		0±0.30	0°±1.0°	www.kinghelm.com.cn			
		.00±0.25	.00±0.5°				
		.000±0.05	.000±0.1°				
比例 (scale)	1 : 1	日期 (date)		单位 (units)	mm	图 名 (name)	DR-9S叉锁环保
页次 (sheet)	A / 1	绘图 (draw)		颜色 (shaded)		图号 (draw number)	
版次 (rev.)	A / 0	审核 (ch'k)		材料 (mt' l)		料号 (Part number)	KH-DR9S-F8.1-1
视图 (view)	核准 (app' d)			处理 (finish)		图档 (File Name)	