



DESCRIPTION

The MAX3483ESA is $\pm 15\text{kV}$ ESD-protected, +3.3V, low-power transceivers for RS-485 and RS-422 communications.

Each device contains one driver and one receiver. The MAX3483ESA features slew-rate-limited drivers that minimize EMI and reduce reflections caused by improperly terminated cables, allowing error-free data transmission at data rates up to 250kbps.

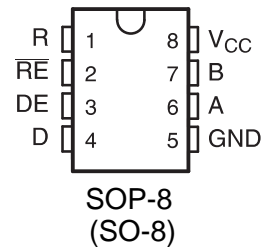
Devices feature enhanced electrostatic discharge (ESD) protection. All transmitter outputs and receiver inputs are protected to $\pm 15\text{kV}$ using IEC 1000-4-2 Air-Gap Discharge $\pm 8\text{kV}$ using IEC 1000-4-2 Contact Discharge, and $\pm 15\text{kV}$ using the Human Body Model.

Drivers are short-circuit current limited and are protected against excessive power dissipation by thermal shutdown circuitry that places the driver outputs into a high-impedance state.

The receiver input has a fail-safe feature that guarantees a logic-high output if both inputs are open circuit.

The MAX3483ESA is designed for half-duplex communication.

PIN CONFIGURATION



FEATURES

- Interoperable with +5V Logic
- 2nA Low-Current Shutdown Mode
- Operate from a Single +3.3V Supply-No Charge Pump Required
- Slew-Rate Limited for Errorless Data Transmission
- Provide enhanced ESD protection for RS-485/RS-422 A/B pins
- ESD Protection for RS-485 I/O Pins
HBM human mode $\pm 15\text{kV}$
IEC 1000-4-2: Contact discharge +8kV
IEC 1000-4-2: Air discharge $\pm 15\text{kV}$

ABSOLUTE MAXIMUM RATINGS

Supply Voltage (V_{CC}) 7V

Control Input Voltage -0.3V to 7V

Driver Input Voltage (DI) -0.3V to 7V

Driver Output Voltage (A, B) -7.5V to +12.5V

Receiver Input Voltage (A, B) -7.5V to +12.5V

Receiver Output Voltage (RO) -0.3V to ($V_{CC} + 0.3\text{V}$)

Continuous Power Dissipation ($T_A = +70^\circ\text{C}$)

8-Pin SO (derate 5.88mW/ $^\circ\text{C}$ above $+70^\circ\text{C}$)
471mW

Operating Temperature Ranges 0°C to $+70^\circ\text{C}$

Storage Temperature Range -65°C to $+150^\circ\text{C}$

Lead Temperature (soldering, 10sec) $+300^\circ\text{C}$

APPLICATIONS

- Packet Switching
- Telecommunications
- Integrated Services Digital Networks
- Industrial-Control Local Area Networks
- Transceivers for EMI-Sensitive Applications



DC ELECTRICAL CHARACTERISTICS

($V_{CC} = 3.3V \pm 0.3$, $T_A = T_{MIN}$ to T_{MAX} , unless otherwise noted, $T_A = 25^\circ C$)

PARAMETER	SYMBOL	CONDITIONS	MIN	TYP	MAX	UNITS
Differential Driver Output (no load)	V_{OD1}		2.0			V
Differential Driver Output (with load)	V_{OD2}	R = 54Ω (RS-422)	2			V
		R = 60Ω (RS-485)	1.5			
Change in Magnitude of Driver Differential Output Voltage for Complementary Output States	ΔV_{OD}	R = 54Ω or 100Ω			0.2	V
Driver Common-Mode Output Voltage	V_{OC}	R = 54Ω or 100Ω			3	V
Change in Magnitude of Driver Common-Mode Output Voltage for Complementary Output States	ΔV_{OD}	R = 54Ω or 100Ω			0.2	V
Input High Voltage	V_{IH}	DE, DI, \overline{RE}	2.0			V
Input Low Voltage	V_{IL}	DE, DI, \overline{RE}			0.8	V
Input Current	I_{IN1}	DE, DI, RE			±2	μA
Input Current (A, B)	I_{IN2}	DE = 0V; $V_{CC} = 0V$ or 5.25V,	$V_{IN} = 12V$		1.0	mA
			$V_{IN} = -7V$		-0.8	
Receiver Differential Threshold Voltage	V_{TH}	$-7V \leq V_{CM} \leq 12V$	-0.2		0.2	V
Receiver Input Hysteresis	ΔV_{TH}	$V_{CM} = 0V$		50		mV
Receiver Output High Voltage	V_{OH}	$I_O = -1.5mA$, $V_{ID} = 200mV$	2.9			V
Receiver Output Low Voltage	V_{OL}	$I_O = 2.5mA$, $V_{ID} = -200mV$			0.4	V
Three-State (high impedance) Output Current at Receiver	I_{OZR}	$V_{CC} = 3.6V$, $0.4V \leq V_O \leq 2.4V$			±1	μA
Receiver Input Resistance	R_{IN}	$-7V \leq V_{CM} \leq 12V$	12			kΩ

DC ELECTRICAL CHARACTERISTICS (continued)

($V_{CC} = 5V \pm 5\%$, $T_A = T_{MIN}$ to T_{MAX} , unless otherwise noted.)

PARAMETER	SYMBOL	CONDITIONS	MIN	TYP	MAX	UNITS
No-Load Supply Current	I_{CC}	DE = V_{CC} , $\overline{RE} = 0V$ or V_{CC}		1.1	2.2	mA
		DE = 0V, $\overline{RE} = 0V$		0.95	1.9	
		DE = 0V, $\overline{RE} = V_{CC}$, DE = V_{CC} or 0		0.95	1.9	
Driver Short-Circuit Current,	I_{OSD}	$V_{OD} = -7V$			-250	mA
		$V_{OD} = -12V$			250	mA
Receiver Short-Circuit Current	I_{OSR}	$0V \leq V_O \leq V_{CC}$	±8		±60	mA



SWITCHING CHARACTERISTICS

($V_{CC} = 3.3V \pm 5\%$, $T_A = 25^\circ C$)

PARAMETER	SYMBOL	CONDITIONS	MIN	TYP	MAX	UNITS
Maximum Data Rate	t_{DD}	$R_L = 60\Omega$	600	900	1400	ns
Driver Diferential Output Delay	t_{TD}	$R_L = 60\Omega$	400	740	1200	ns
Driver Diferential Output Transition Time	t_{PLH}	$R_L = 27\Omega$	700	930	1500	ns
Driver Propagation Delay, Low-to-High Level	t_{PHL}	$R_L = 27\Omega$	700	930	1500	ns
$ t_{PLH} - t_{PHL} $ Driver Propagation Delay Skew	t_{PDS}	$R_L = 27\Omega$		± 50		ns
Driver-Output Enable Time to Low Level	t_{PZL}	$R_L = 100\Omega$		900	1300	ns
Driver-Output Enable Time to High Level	t_{PZH}	$R_L = 100\Omega$		600	800	ns
Driver-Output Disable Time from High Level	t_{PHZ}	$R_L = 100\Omega$		50	80	ns
Driver-Output Disable Time from Low Level	t_{PLZ}	$R_L = 100\Omega$		50	80	ns
Driver-Output Enable Time from Shutdown to Low Level	t_{PSL}	$R_L = 100\Omega$		1.9	2.7	ns
Driver-Output Enable Time from Shutdown to High Level	t_{PSH}	$R_L = 100\Omega$		2.2	3.0	ns
Maximum Data Rate	f_{MAX}		250			kbps

RECEIVER SWITCHING CHARACTERISTICS

($V_{CC} = 3.3V \pm 5\%$, $T_A = 25^\circ C$)

PARAMETER	SYMBOL	CONDITIONS	MIN	TYP	MAX	UNITS
Time to Shutdown	t_{SHDN}		80	190	300	ns
Receiver Propagation Delay, Low-to-High Level	t_{RPLH}	$V_{ID} = 0$ to 3.0, $C_L = 15pF$	25	75	120	ns
Receiver Propagation Delay, High-to-Low Level	t_{RPHL}	$V_{ID} = 0$ to 3.0, $C_L = 15pF$	25	75	120	ns
$ t_{RPLH} - t_{RPHL} $ Receiver Propagation Delay Skew	t_{RPDS}	$V_{ID} = 0$ to 3.0, $C_L = 15pF$		12	± 20	ns
Receiver Output Enable Time to Low Level	t_{PRZL}	$C_L = 15pF$		25	50	ns
Receiver Output Enable Time to High Level	t_{PRZH}	$C_L = 15pF$		25	50	ns
Receiver Output Disable Time from High Level	t_{PRHZ}	$C_L = 15pF$		25	45	ns
Receiver Output Disable Time from Low Level	t_{PRLZ}	$C_L = 15pF$		25	45	ns
Receiver Output Enable Time from Shutdown to Low Level	t_{PRSL}	$C_L = 15pF$		720	1400	ns
Receiver Output Enable Time from Shutdown to High Level	t_{PRSH}	$C_L = 15pF$		720	1400	ns

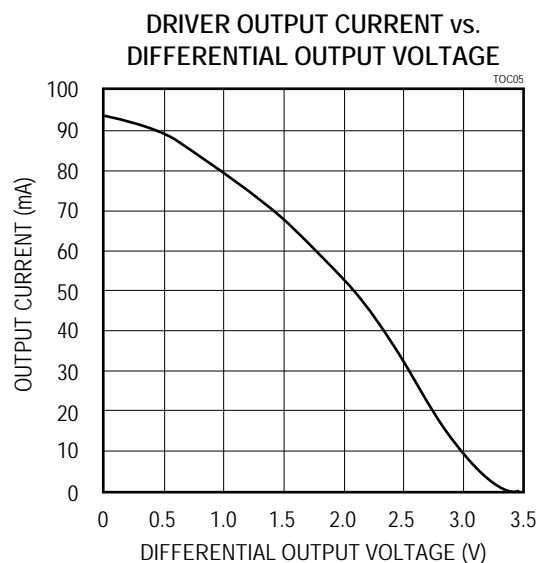
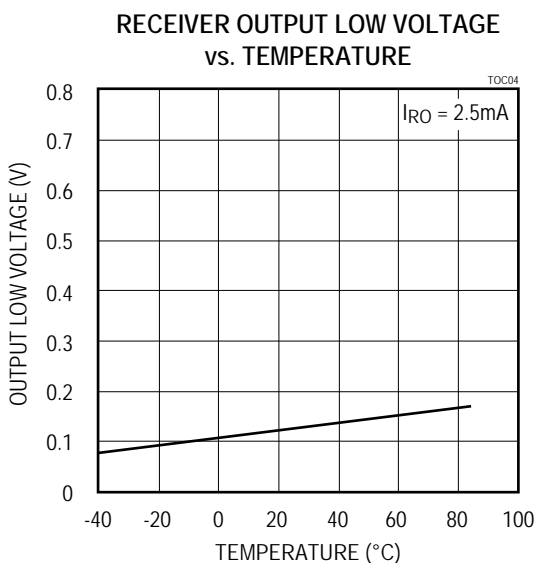
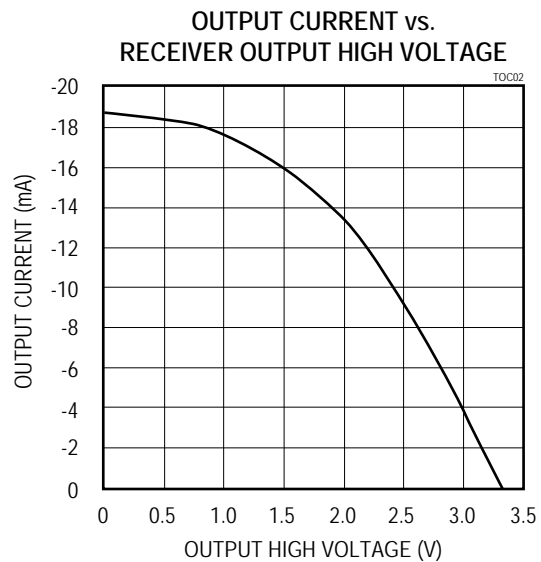
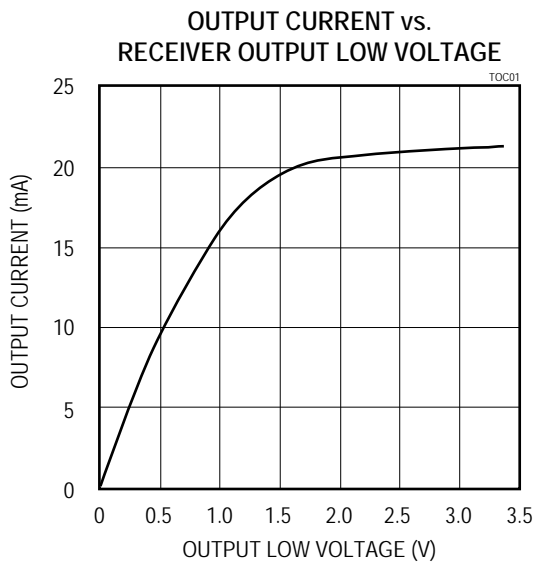


TABLE OF OPERATION

Transmission					Receipt			
Inputs			Outputs X		Inputs			Outputs
RE	DE	DI	A	B	RE	DE	A-B	RO
X	1	1	1	0	0	X	+0.2V	1
X	1	0	0	1	0	X	-0.2V	0
0	0	X	Z	Z	0	X	Inputs open	1
1	0	X	Z	Z	1	0	X	Z

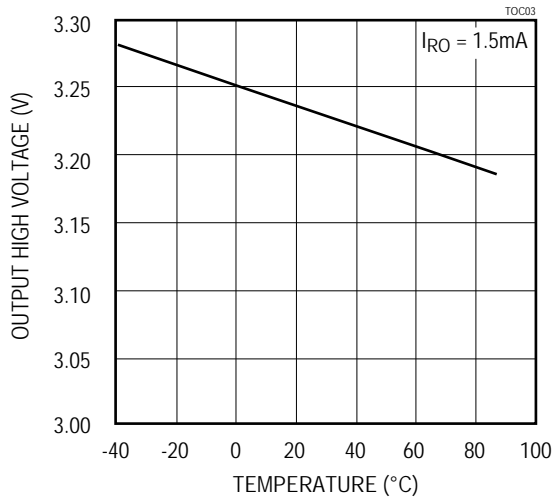
X-Any level
Z-High resistance

TYPICAL CHARACTERISTICS

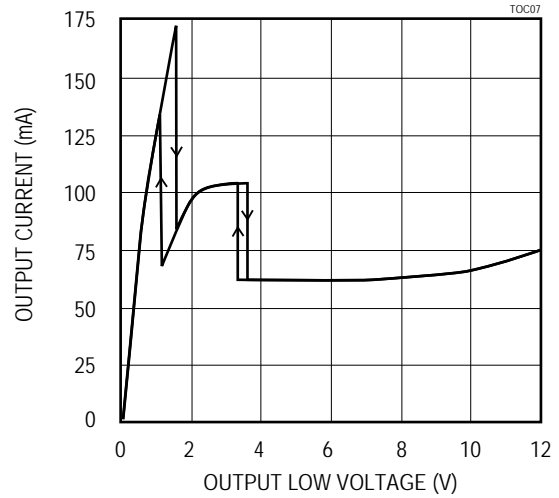




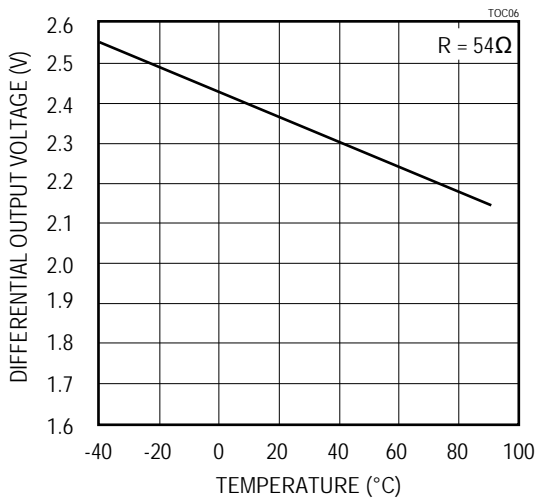
RECEIVER OUTPUT HIGH VOLTAGE
vs. TEMPERATURE



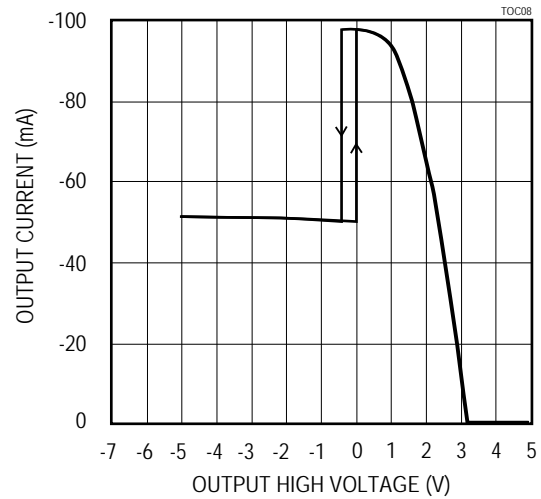
OUTPUT CURRENT vs.
DRIVER OUTPUT LOW VOLTAGE



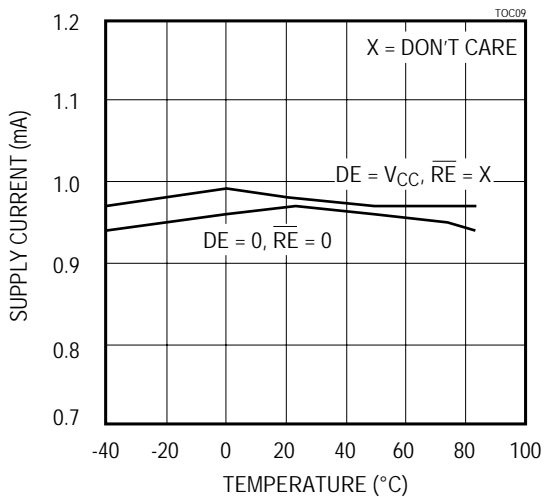
DRIVER DIFFERENTIAL OUTPUT
VOLTAGE vs. TEMPERATURE



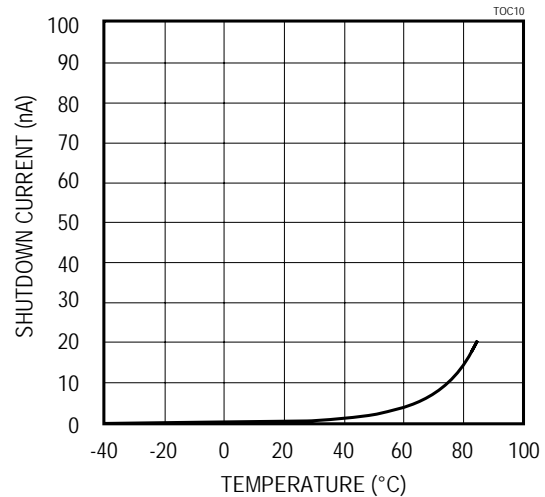
OUTPUT CURRENT vs.
DRIVER OUTPUT HIGH VOLTAGE



SUPPLY CURRENT
vs. TEMPERATURE

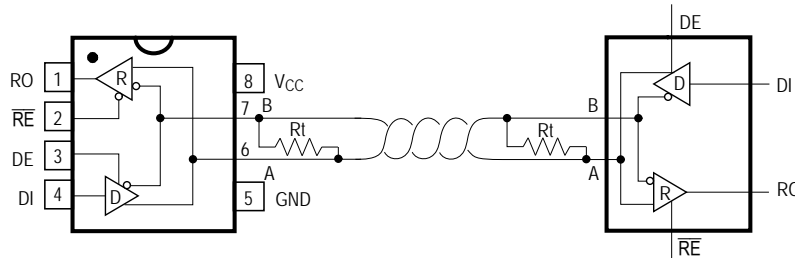


SHUTDOWN CURRENT
vs. TEMPERATURE





Typical Operating Circuit



Low-Power Shutdown Mode

A low-power shutdown mode is initiated by bringing both \overline{RE} high and DE low.

The devices will not shut down unless both the driver and receiver are disabled (high impedance).

In shutdown, the devices typically draw only 2nA of supply current.

For these devices, the tPSH and tPSL enable times assume the part was in the low-power shutdown mode; the tPZH and tPZL enable times assume the receiver or driver was disabled, but the part was not shut down.

Applications Information

The MAX3485E is low-power transceivers for RS-485 and RS-422 communications. The MAX3483ESA can transmit and receive at data rates up to 250kbps. The MAX3483ESA is half-duplex. Driver Enable (DE) and Receiver Enable (\overline{RE}) pins is included on the MAX3483ESA.

When disabled, the driver and receiver outputs are high impedance.

Reduced EMI and Relections

The MAX3483ESA is slew-rate limited, mini-mizing EMI and reducing reflections caused by improp-erly terminated cables.

Driver Output Protection

Excessive output current and power dissipation caused by faults or by bus contention are prevented by two mechanisms. A foldback current limit on the output stage provides immediate protection against short circuits over the whole common-mode voltage range (see *Typical Operating Characteristics*). In addition, a thermal shut-down circuit forces the driver outputs into a high-imped-ance state if the die temperature rises excessively.

Propagation Delay

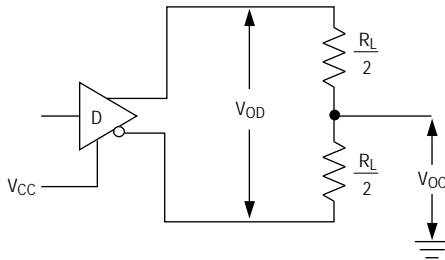
Skew time is simply the difference between the low-to-high and high-to-low propagation delay. Small driver/receiver skew times help maintain a symmetrical mark-space ratio (50% duty cycle).

The receiver skew time, $|t_{PRLH} - t_{PRHL}|$, is under 10ns 20ns for the MAX3483ESA).

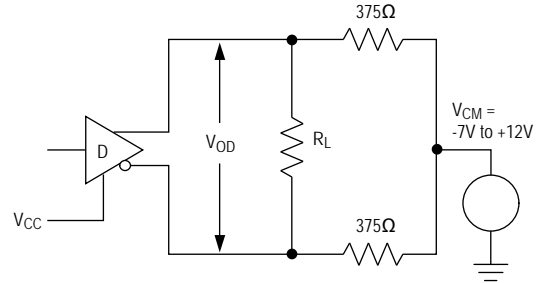
The driver skew times is 50ns.



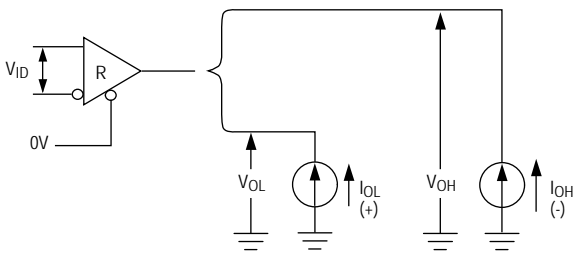
Driver DC Test Load



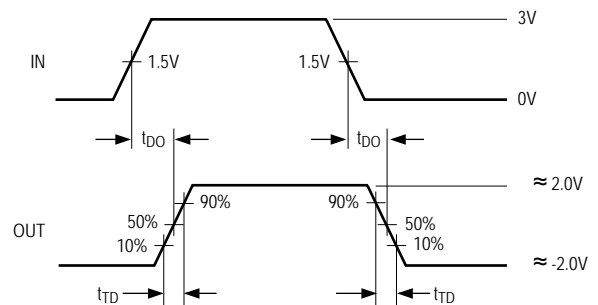
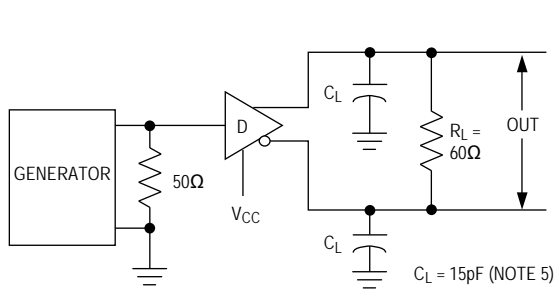
Driver VOD with Varying Common-Mode Voltage



Receiver VOH and VOL

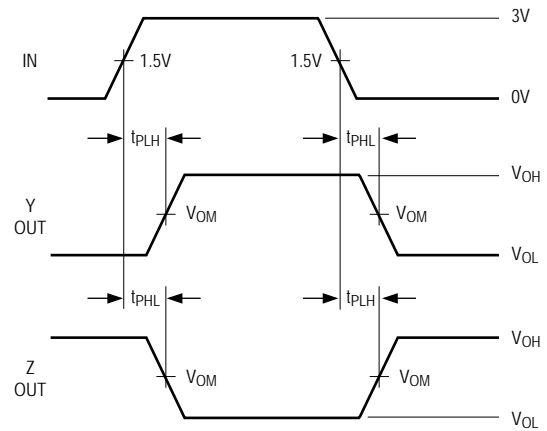
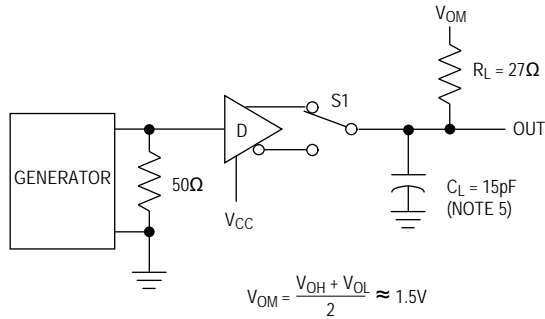


Driver Differential Output Delay and Transition Times

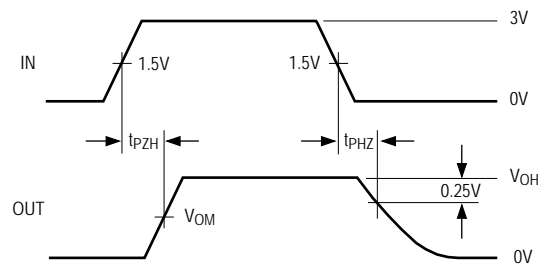
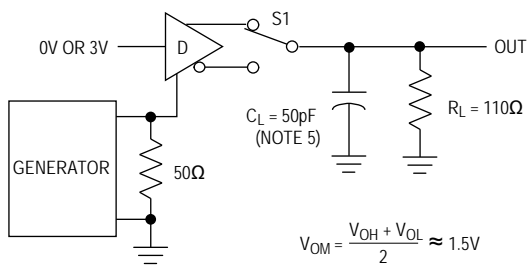




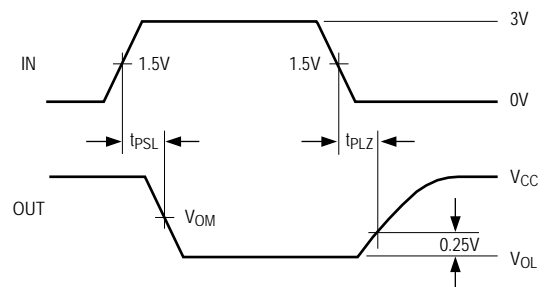
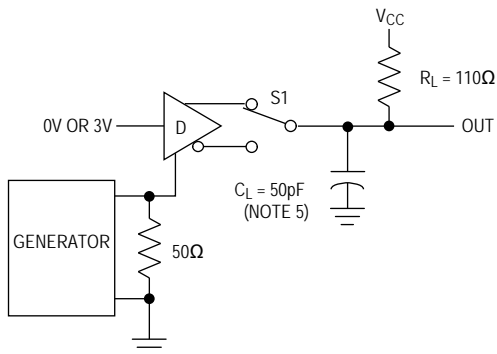
Driver Propagation Times



Driver Enable and Disable Times (tPZH, tPSH, tPHZ)

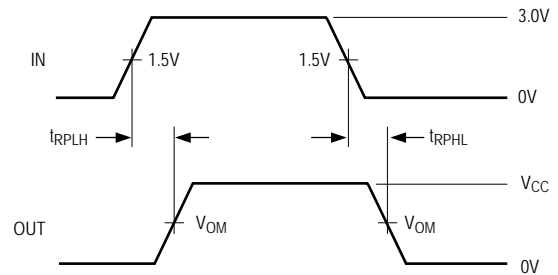
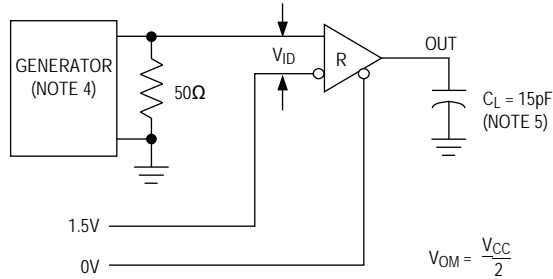


Driver Enable and Disable Times (tPSL, tPLZ)





Receiver Propagation Delay

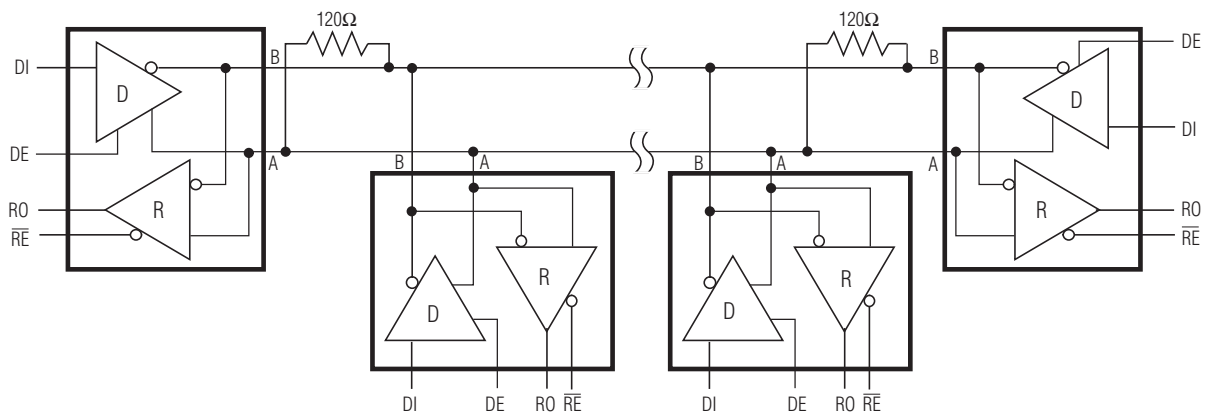


Typical Applications

The MAX3483E transceivers are designed for bidirectional data communications on multipoint bus transmission lines. The following figure show typical net-work applications circuits.

To minimize reflections, the line should be terminated at both ends in its characteristic impedance, and stub lengths off the main line should be kept as short as possible.

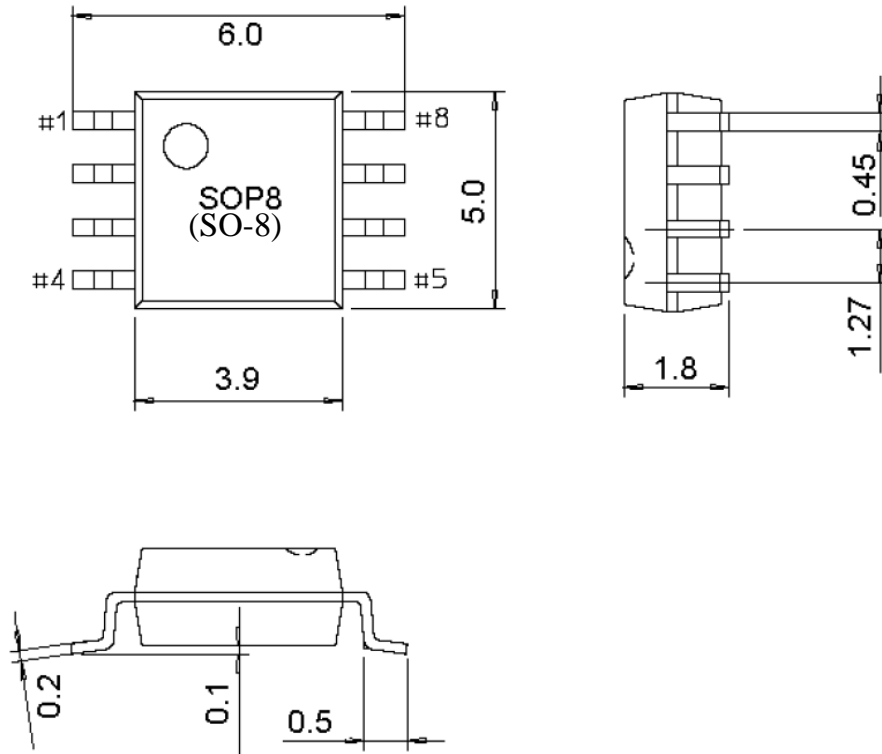
Typical Half-Duplex RS-485 Network





PACKAGE OUTLINE DIMENSIONS

SOP-8(SO-8)





Attention

- Any and all HUA XUAN YANG ELECTRONICS products described or contained herein do not have specifications that can handle applications that require extremely high levels of reliability, such as life-support systems, aircraft's control systems, or other applications whose failure can be reasonably expected to result in serious physical and/or material damage. Consult with your HUA XUAN YANG ELECTRONICS representative nearest you before using any HUA XUAN YANG ELECTRONICS products described or contained herein in such applications.
- HUA XUAN YANG ELECTRONICS assumes no responsibility for equipment failures that result from using products at values that exceed, even momentarily, rated values (such as maximum ratings, operating condition ranges, or other parameters) listed in products specifications of any and all HUA XUAN YANG ELECTRONICS products described or contained herein.
- Specifications of any and all HUA XUAN YANG ELECTRONICS products described or contained herein stipulate the performance, characteristics, and functions of the described products in the independent state, and are not guarantees of the performance, characteristics, and functions of the described products as mounted in the customer's products or equipment. To verify symptoms and states that cannot be evaluated in an independent device, the customer should always evaluate and test devices mounted in the customer's products or equipment.
- HUA XUAN YANG ELECTRONICS CO.,LTD. strives to supply high-quality high-reliability products. However, any and all semiconductor products fail with some probability. It is possible that these probabilistic failures could give rise to accidents or events that could endanger human lives, that could give rise to smoke or fire, or that could cause damage to other property. When designing equipment, adopt safety measures so that these kinds of accidents or events cannot occur. Such measures include but are not limited to protective circuits and error prevention circuits for safe design, redundant design, and structural design.
- In the event that any or all HUA XUAN YANG ELECTRONICS products(including technical data, services) described or contained herein are controlled under any of applicable local export control laws and regulations, such products must not be exported without obtaining the export license from the authorities concerned in accordance with the above law.
- No part of this publication may be reproduced or transmitted in any form or by any means, electronic or mechanical, including photocopying and recording, or any information storage or retrieval system, or otherwise, without the prior written permission of HUA XUAN YANG ELECTRONICS CO.,LTD.
- Information (including circuit diagrams and circuit parameters) herein is for example only ; it is not guaranteed for volume production. HUA XUAN YANG ELECTRONICS believes information herein is accurate and reliable, but no guarantees are made or implied regarding its use or any infringements of intellectual property rights or other rights of third parties.
- Any and all information described or contained herein are subject to change without notice due to product/technology improvement, etc. When designing equipment, refer to the "Delivery Specification" for the HUA XUAN YANG ELECTRONICS product that you intend to use.