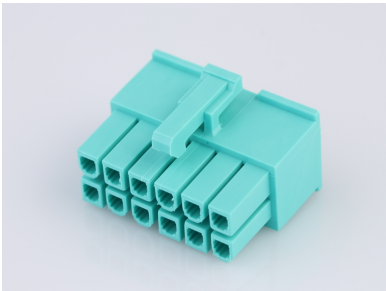




**Part Number :** [469921030](#)  
**Product Description :** Mini-Fit Versa Color  
Receptacle Housing, Dual Row, Nylon 6/6, UL  
94V-0, 10 Circuits, Glow-Wire Capable, Green  
**Series Number :** 46992  
**Status :** Active  
**Product Category :** Connector Housings



## Documents & Resources

### Drawings

[Drawing 469921030\\_sd.pdf](#)  
[Packaging Design Drawing PK-5557-002-000.pdf](#)

### 3D Models and Design Files


[3D Model 469921030\\_stp.zip](#)

### Specifications

[Product Specification PS-5556-001-001.pdf](#)

## Product Environment Compliance

### Compliance

GADSL/IMDS	Not Relevant
China RoHS	
EU ELV	Not Relevant
Low-Halogen Status	Not Low-Halogen per IEC 61249-2-21
REACH SVHC	Not Contained per D(2024)4144-DC (27 June 2024)
EU RoHS	Compliant per EU 2015/863

### Multiple Part Product Compliance Statements

- Eu RoHS
- REACH SVHC
- Low-Halogen

### Multiple Part Industry Compliance Documents

- IPC 1752A Class C
- IPC 1752A Class D

- Molex Product Compliance Declaration
- IEC-62474
- chemSHERPA (xml)

## EU RoHS Certificate of Compliance

---

### Part Details

#### General

Status	Active
Category	Connector Housings
Series	46992
Description	Mini-Fit Versa Color Receptacle Housing, Dual Row, Nylon 6/6, UL 94V-0, 10 Circuits, Glow-Wire Capable, Green
Application	Power, Wire-to-Board, Wire-to-Wire
Product Family	Mini-Fit Family Power Connectors
Product Name	Mini-Fit Versa Color
UPC	195842021938

#### Agency

CSA	LR19980
UL	E29179

#### Physical

Circuits (maximum)	10
Color - Resin	Green
Flammability	94V-0
Gender	Receptacle
Glow-Wire Capable	Yes
Keying to Mating Part	None
Lock to Mating Part	Yes
Material - Resin	Nylon
Net Weight	2.140/g
Number of Rows	2
Packaging Type	Bag
Panel Mount	No

Pitch - Mating Interface	4.20mm
Pitch - Termination Interface	4.20mm
Polarized to Mating Part	Yes
Temperature Range - Operating	-40° to +105°C

---

## Mates With / Use With

### Mates with Part(s)

Description	Part Number
Mini-Fit Jr. Dual Row Plug Housings	<u>46993</u>
Mini-Fit Vertical Dual Row Headers	<u>172447</u>

### Use with Part(s)

Description	Part Number
Mini-Fit Female Crimp Terminals	<u>5556</u>