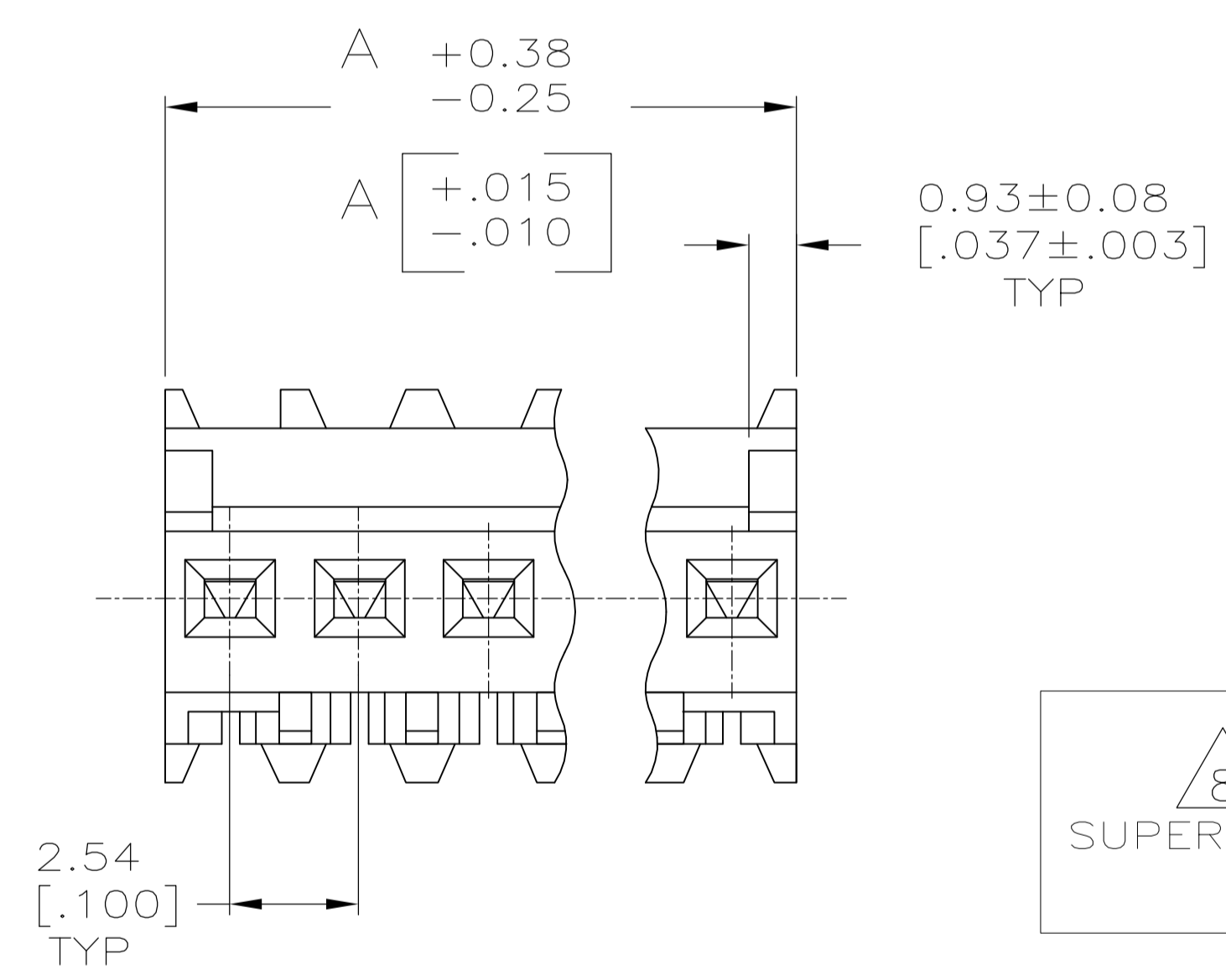
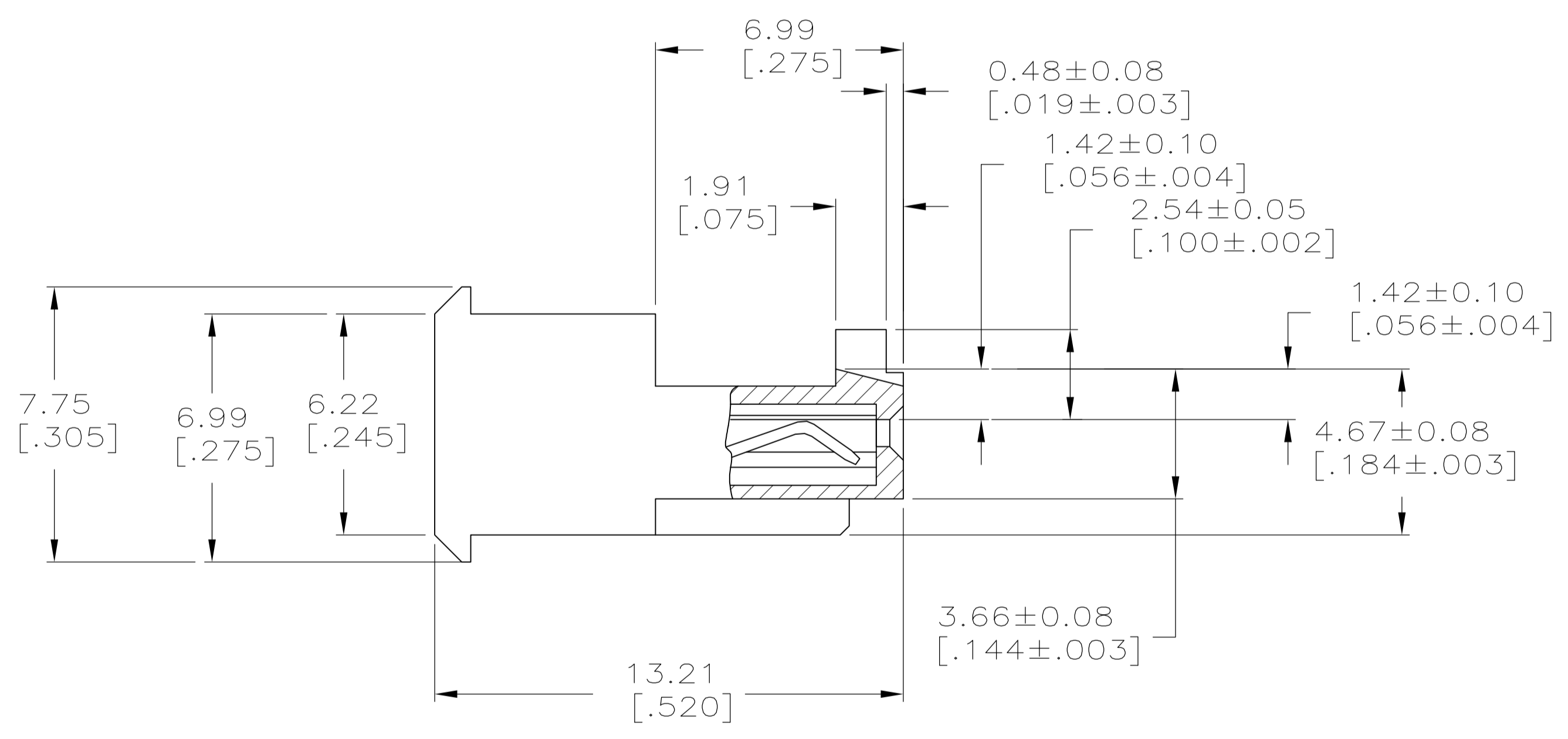
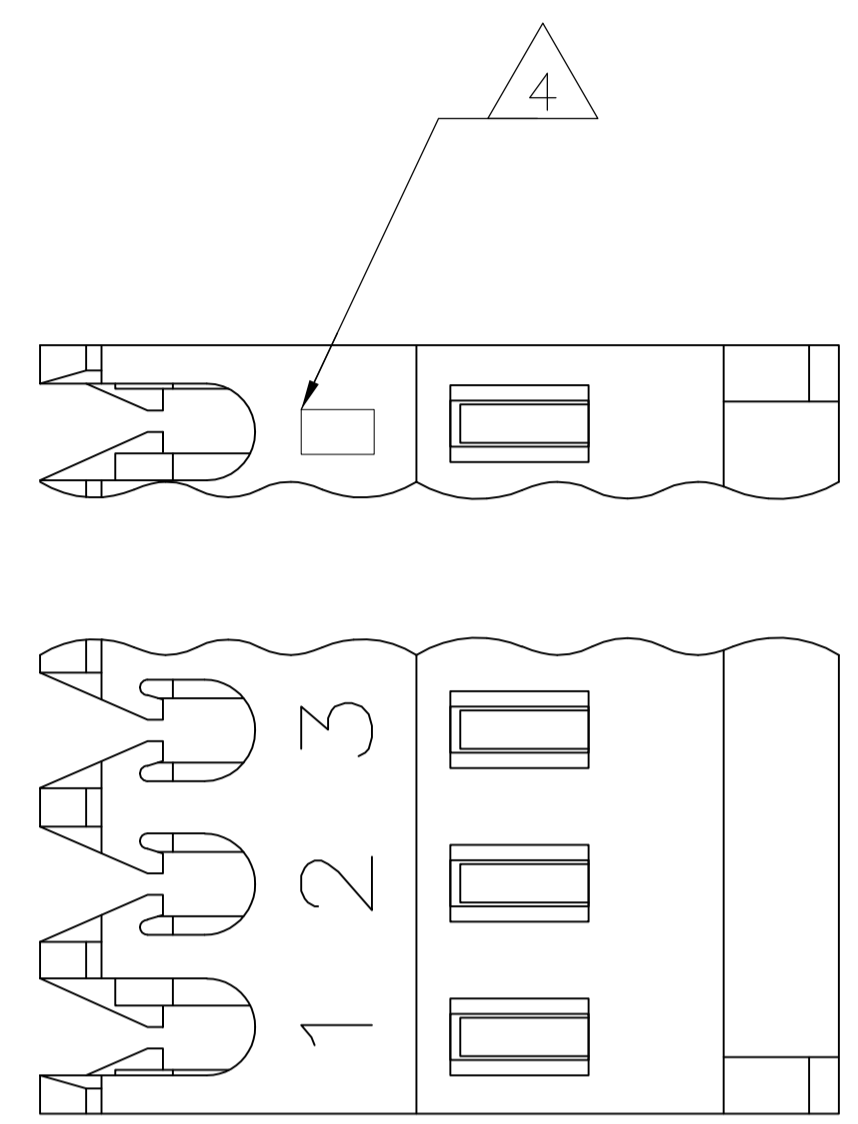


LOC		DIST		REVISIONS			
CM	00	REV	DESCRIPTION	DATE	BY	CHKD	APVD
M		13	ECR-13-008537	16SEP13	M.T	D.Z	
M1		14	ECO-14-010907	11SEP2014	KR	OC	

- 1 MATERIAL: CONNECTOR - NYLON UL94V-2 (RED).  
 CONTACTS - 0.30[.012] THICK COPPER ALLOY  
 0.00076[.000030] GOLD OR 0.00076[.000030]  
 TOTAL GOLD FLASH OVER PALLADIUM NICKEL,  
 PER TE CONNECTIVITY'S DISCRETION, IN CONTACT AREA  
 WITH MATTE TIN SLOT AREA FOR 644702-2  
 THRU1-644702-6  
 OR MATTE WHISKER MITIGATED TIN FOR 3-644702-2
- 2 THRU 4-644702-6 OVER NICKEL UNDERPLATE.
- 3 CONTACTS ACCEPT 22 AWG WIRE WITH 1.52 [.060] MAX INSULATION DIAMETER.
- 4 CONTACTS MUST ACCEPT 0.64±0.03 [.025±.001] SQUARE POST AND REMAIN LOCKED IN POSITION.
- 5 IDENTIFICATION NUMBER FOR LAST CIRCUIT MAY NOT APPEAR ON ALL ASSEMBLIES.
- 6 DIMENSIONS IN BRACKETS ARE IN INCHES.
- 7 HOUSING FEATURES ARE: FEED THRU WITH LOCKING RAMP AND POLARIZING TAB.
- 8 OBSOLETE PARTS: OBSOLETE CIS STREAMLINING PER D.RENAUD/D.SINISI



TIN	40.64	[1.600]	16	4-644702-6	
TIN	38.10	[1.500]	15	4-644702-5	
TIN	35.56	[1.400]	14	4-644702-4	
TIN	33.02	[1.300]	13	4-644702-3	
TIN	30.48	[1.200]	12	4-644702-2	
TIN	27.94	[1.100]	11	4-644702-1	
TIN	25.40	[1.000]	10	4-644702-0	
TIN	22.86	[.900]	9	3-644702-9	
TIN	20.32	[.800]	8	3-644702-8	
TIN	17.78	[.700]	7	3-644702-7	
TIN	15.24	[.600]	6	3-644702-6	
TIN	12.70	[.500]	5	3-644702-5	
TIN	10.16	[.400]	4	3-644702-4	
TIN	7.62	[.300]	3	3-644702-3	
TIN	5.08	[.200]	2	3-644702-2	
SUPERSEDED	TIN-LEAD	40.64	[1.600]	16	<del>1-644702-6</del>
SUPERSEDED	TIN-LEAD	38.10	[1.500]	15	<del>1-644702-5</del>
SUPERSEDED	TIN-LEAD	35.56	[1.400]	14	<del>1-644702-4</del>
SUPERSEDED	TIN-LEAD	33.02	[1.300]	13	<del>1-644702-3</del>
SUPERSEDED	TIN-LEAD	30.48	[1.200]	12	<del>1-644702-2</del>
SUPERSEDED	TIN-LEAD	27.94	[1.100]	11	<del>1-644702-1</del>
SUPERSEDED	TIN-LEAD	25.40	[1.000]	10	<del>1-644702-0</del>
SUPERSEDED	TIN-LEAD	22.86	[.900]	9	<del>644702-9</del>
SUPERSEDED	TIN-LEAD	20.32	[.800]	8	<del>644702-8</del>
SUPERSEDED	TIN-LEAD	17.78	[.700]	7	<del>644702-7</del>
SUPERSEDED	TIN-LEAD	15.24	[.600]	6	<del>644702-6</del>
SUPERSEDED	TIN-LEAD	12.70	[.500]	5	<del>644702-5</del>
SUPERSEDED	TIN-LEAD	10.16	[.400]	4	<del>644702-4</del>
SUPERSEDED	TIN-LEAD	7.62	[.300]	3	<del>644702-3</del>
SUPERSEDED	TIN-LEAD	5.08	[.200]	2	<del>644702-2</del>
FINISH	DIM A	NO.OF POSN	ASSEMBLY		

THIS DRAWING IS A CONTROLLED DOCUMENT. **STE** TE Connectivity

DIMENSIONS: mm [INCHES]	TOLERANCES UNLESS OTHERWISE SPECIFIED:	0 PLC ±	1 PLC ±	2 PLC ±	3 PLC ±	4 PLC ±	ANGLES ±

APPROVED: **D. ROSSI** 28-DEC-2004  
 NAME: MTA .100 CONNECTOR ASSEMBLY, 22 AWG, STANDARD  
 PRODUCT SPEC: 108-1050  
 APPLICATION SPEC: 114-1019  
 SIZE: A1  
 CAGE CODE: 00779  
 DRAWING NO: 644702  
 WEIGHT: CUSTOMER DRAWING  
 SCALE: 8:1  
 SHEET: 1 of 1  
 REV: M1